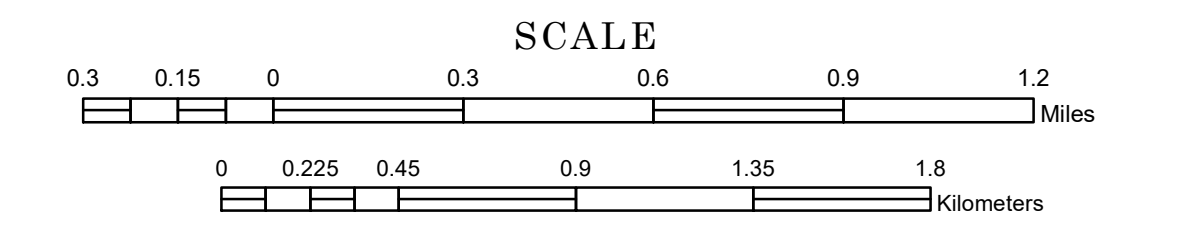


MUNICIPALITY OF FARMINGTON

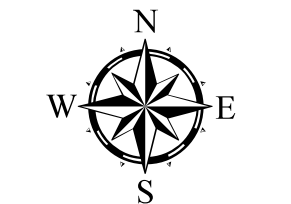
PREPARED BY THE
MINNESOTA DEPARTMENT OF TRANSPORTATION
OFFICE OF TRANSPORTATION SYSTEM MANAGEMENT

IN COOPERATION WITH
U.S. DEPARTMENT OF TRANSPORTATION
FEDERAL HIGHWAY ADMINISTRATION

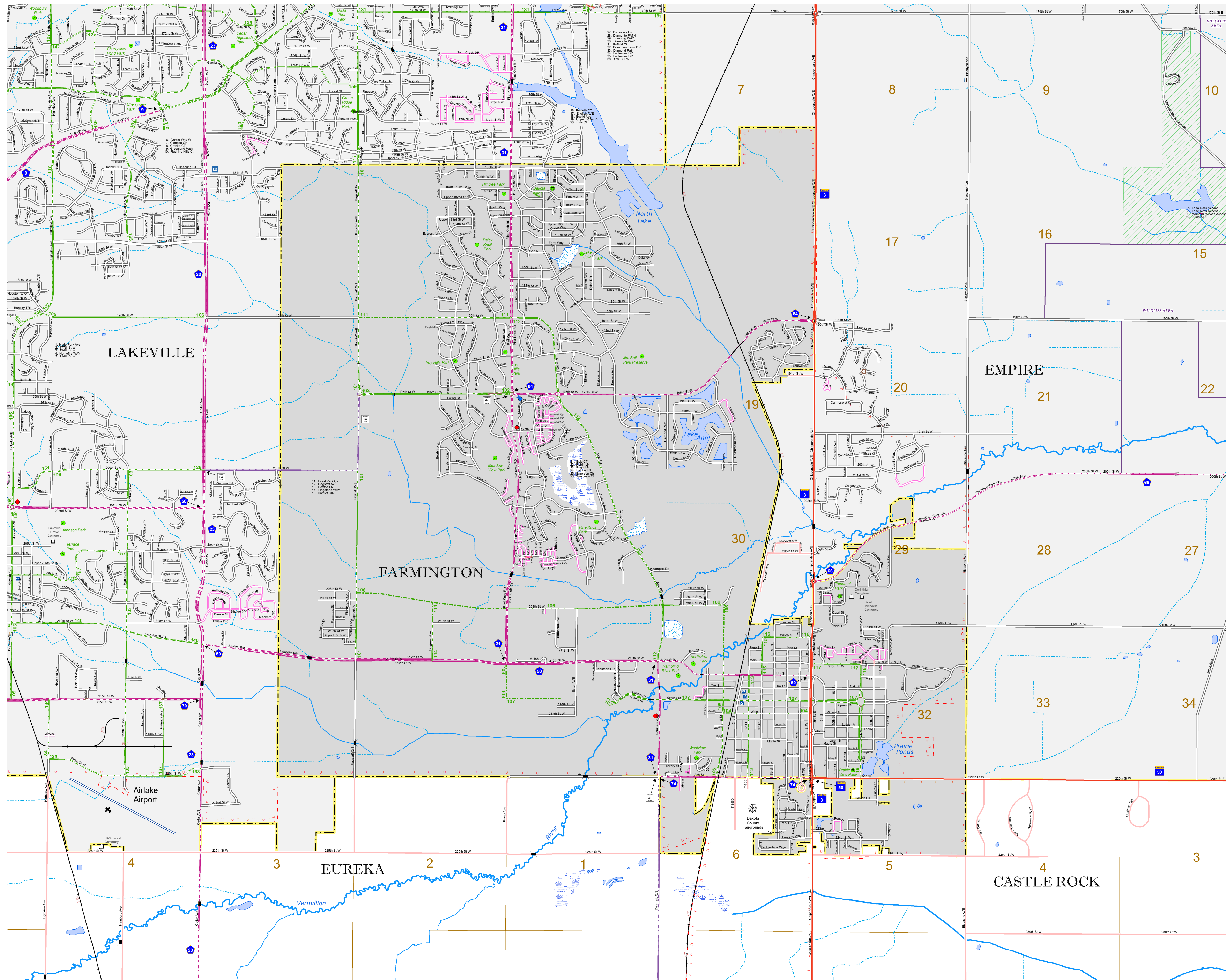


1 in = 1,600 ft
2023

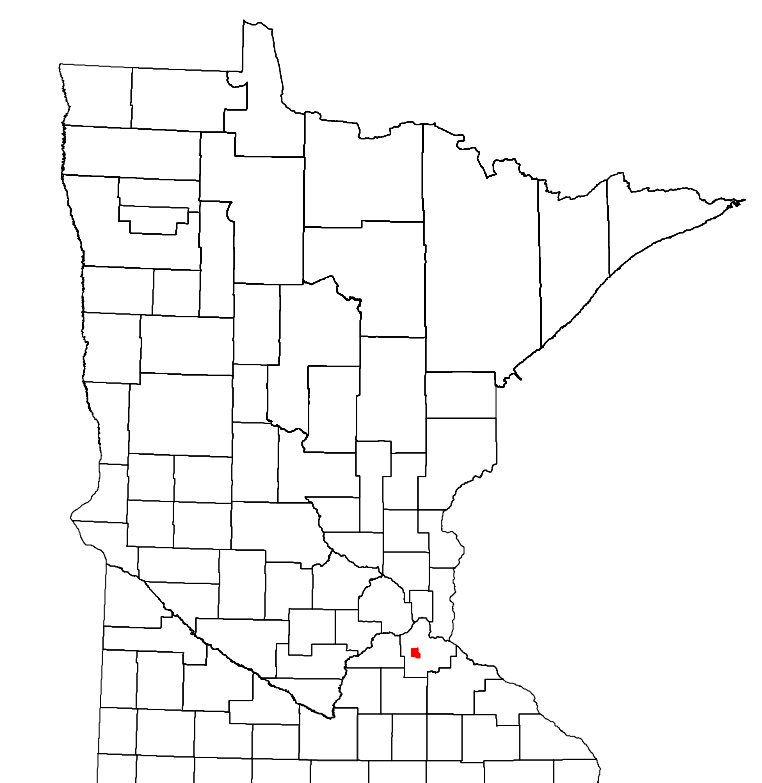
Projection:
Transverse Mercator
NAD 1986
UTM Zone 15



North American Datum
of 1986



ROAD AND ROADWAY FEATURES	PUBLIC SERVICE FEATURES
INTERSTATE	MINDOT OFFICE
US HIGHWAY	MINDOT TRUCK STATION
MN HIGHWAY	HIGHWAY PATROL DISTRICT OFFICE
COUNTY STATE AID HIGHWAY	STATE TRAVEL INFORMATION CENTER
COUNTY ROAD	REST AREA (FULL SERVICE)
MUNICIPAL STREET	REST AREA (VAULT TRAILS)
MUNICIPAL STATE AID STREET	WAYSIDE (VAULT OR PIT TOLLS)
PRIVATE STREET/ROAD	PUBLIC ACCESS POINT
TOWNSHIP ROAD	LOCAL PARK
UNORGANIZED TERRITORY ROAD	FAIRGROUNDS
RAMP OR CONNECTOR	POINT OF ENTRY
INTERSTATE EXIT	PARK AND RIDE LOT
GREAT RIVER ROAD	PUBLIC UNIVERSITY/COLLEGE
OTHER ROAD	PRIVATE UNIVERSITY/COLLEGE
FRONTAGE	STATE HIGHWAY
RIGHT-OF-WAY	NATIONAL HIGHWAY
RAILROAD AND RAILWAY FEATURES	STATE STREET
RAILROAD	STATE FOREST
EMPIRE BUILDER STATION (AMTRAK)	NATIONAL FOREST
NORTHWEST STATION (COMMUTER)	NATIONAL AND STATE FOREST
LIGHT RAIL	STATE FOREST
BLUE LINE STATION	NATIONAL TRAIL
GREEN LINE STATION	WILDLIFE REFUGES AREA
INFRASTRUCTURE FEATURES	WILDLIFE MANAGEMENT AREA
LONG BRIDGE (100' OR GREATER SPAN)	RIVER OR STREAM (PERENNIAL)
MAJOR BRIDGE (50 TO 100' SPAN)	LAKE, POND OR RESERVOIR
MINOR BRIDGE (5 TO 50' SPAN)	STREAM (INTERMITTENT)
ROAD TUNNEL (100' OR GREATER SPAN)	DRAINAGE DITCH
RAILROAD BRIDGE (100' OR GREATER SPAN)	WETLAND
RAILROAD BRIDGE (UNDER 100' SPAN)	ISLAND OR LAND
SKYWAY	REGIONAL WATERSHED
PEDESTRIAN BRIDGE	
PEDESTRIAN TUNNEL	
DAM	
LOCK AND DAM	
PUBLIC FACILITIES	
STATE CAPITOL	
FEDERAL COURTHOUSE	
COUNTY COURTHOUSE	
ARMORY	
CITY HALL	
TOWN HALL	
COMMUNITY CENTER	
ARENA	
STADIUM	
POST OFFICE	
POLICE STATION	
FIRE STATION	
PUBLIC LIBRARY	
PUBLIC MUSEUM	
EVENT CENTER	
CITY CENTERS	
TRIBAL GOVERNMENT CENTER	
CITY CENTER	
LOCALLY KNOWN PLACE	
UNINCORPORATED COMMUNITY	



Population (U.S. Census 2020): 23,632

To request information from this document in an alternative format, call 651-366-4718 or 1-800-657-3774 (Greater Minnesota); 711 or 1-800-627-3529 (Minnesota Relay). You may also send an e-mail to ADRequest.dot@state.mn.us. (Please request at least one week in advance.)

LAST EDITED ON 7-17-2023