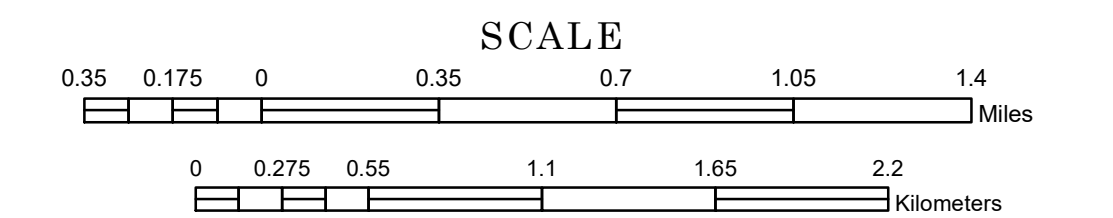


MUNICIPALITY OF MANKATO

PREPARED BY THE
MINNESOTA DEPARTMENT OF TRANSPORTATION
OFFICE OF TRANSPORTATION SYSTEM MANAGEMENT

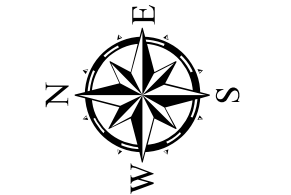
IN COOPERATION WITH
U.S. DEPARTMENT OF TRANSPORTATION
FEDERAL HIGHWAY ADMINISTRATION



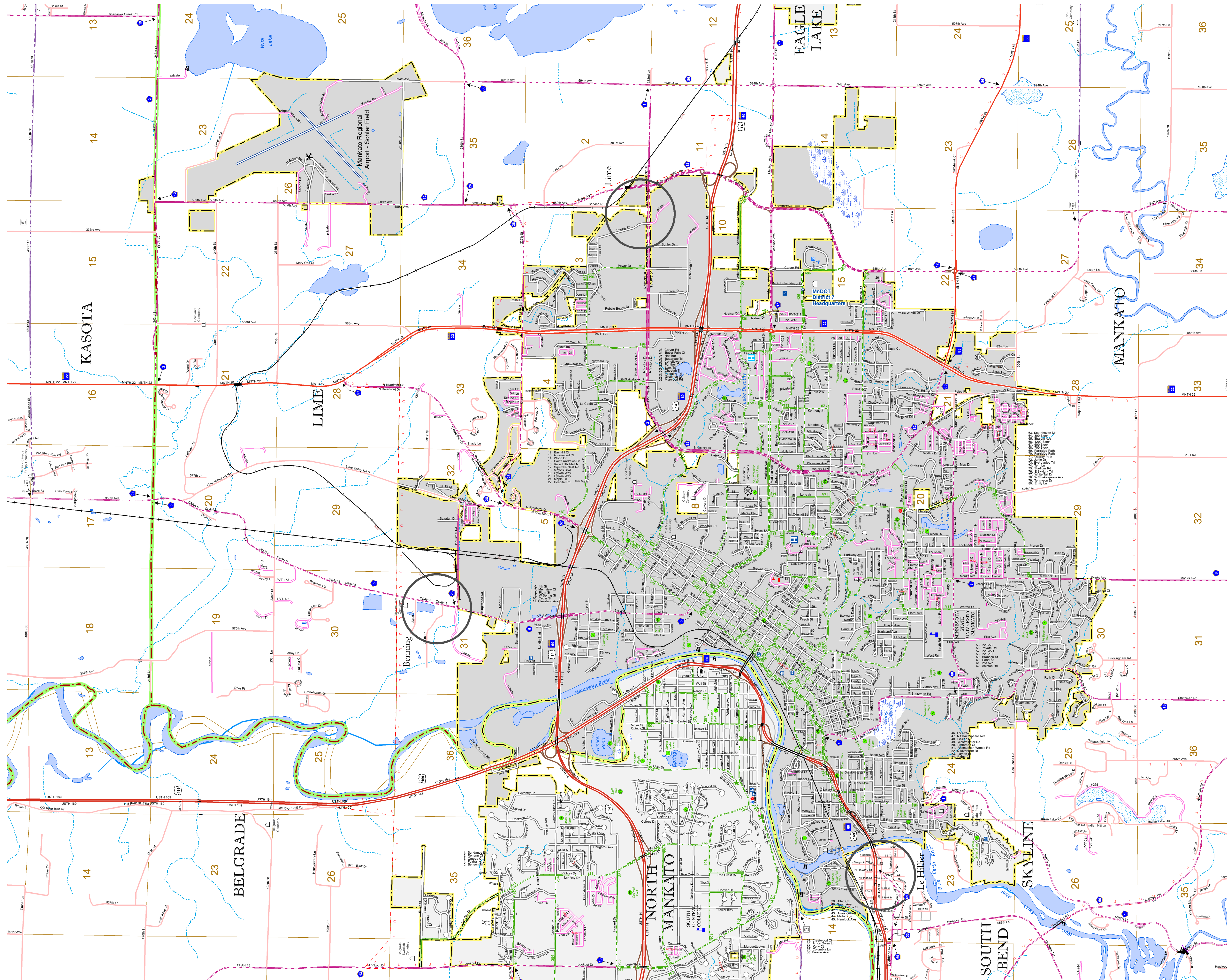
1 in = 2,000 ft

2023

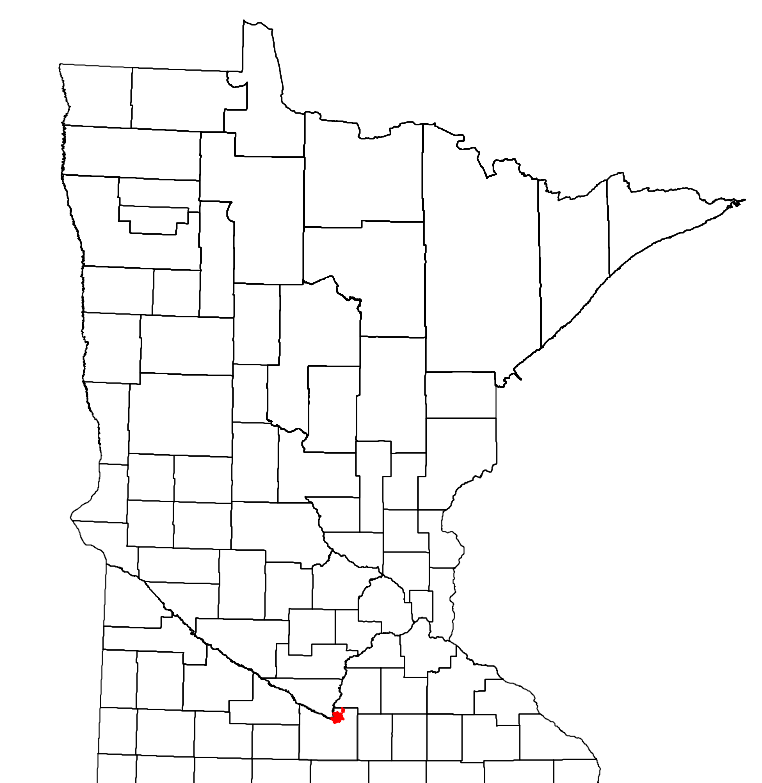
Projection:
Transverse Mercator
NAD 1986
UTM Zone 15



North American Datum
of 1986



ROAD AND ROADWAY FEATURES	PUBLIC SERVICE FEATURES
INTERSTATE	MNDOT OFFICE
US HIGHWAY	MNDOT TRUCK STATION
MIN. HIGHWAY	HIGHWAY PATROL DISTRICT OFFICE
COUNTY STATE AID HIGHWAY	STATE TRAVEL INFORMATION CENTER
COUNTY ROAD	REST AREA (VAULT TRAILS)
MUNICIPAL STREET	REST AREA (VAULT TRAILS)
MUNICIPAL STATE AID STREET	WAYSIDE (VAULT OR PIT TOLLS)
PRIVATE STREET/ROAD	PUBLIC ACCESS POINT
TOWNSHIP ROAD	LOCAL PARK
UNORGANIZED TERRITORY ROAD	FAIRGROUNDS
RAMP OR CONNECTOR	PORT OF ENTRY
INTERSTATE EXIT	PARK AND RIDE LOT
GREAT RIVER ROAD	PUBLIC UNIVERSITY/COLLEGE
OTHER ROAD	PRIVATE UNIVERSITY/COLLEGE
FRONTAGE	NATIONAL PARK
NATIONAL SERVICE	NATIONAL MONUMENT
MILITARY	NATIONAL WILDLIFE REFUGES
RAILROAD AND RAILWAY FEATURES	AVIATION FEATURES
RAILWAY	COMMERCIAL AIRPORT
EMPIRE BUILDER STATION (AMTRAK)	GENERAL AIRPORT
NORTHSTAR STATION (COMMUTER)	AIRSTRIP
LIGHT RAIL	SEAPLANE
BLUE LINE STATION	AIRPORT RUNWAY
GREEN LINE STATION	CULTURAL FEATURES
INFRASTRUCTURE FEATURES	STATE HISTORICAL MARKER
LONG BRIDGE (100' OR GREATER SPAN)	HISTORIC DISTRICT
MAJOR BRIDGE (20' TO 100' SPAN)	HISTORIC SITE
MINOR BRIDGE (5' TO 20' SPAN)	MONUMENT
ROAD TUNNEL (100' OR GREATER SPAN)	CEMETERY
RAILROAD BRIDGE (100' OR GREATER SPAN)	BOUNDARY FEATURES
RAILROAD BRIDGE (UNDER 100' SPAN)	TRIBAL LAND
BOATWAY	COUNTY
PEDESTRIAN BRIDGE	MUNICIPALITY
PEDESTRIAN TUNNEL	ADJACENT MUNICIPALITY
DAM	FEDERAL ADJUSTED URBAN AREA (2014)
LOCK AND DAM	PUBLIC FACILITIES
STATE CAPITOL	FEDERAL CAPITOL
FEDERAL COURTHOUSE	CITY HALL
COUNTY COURTHOUSE	TOWN HALL
ARMORY	COMUNITY CENTER
CITY HALL	ARENA
TOWN HALL	STADIUM
COMUNITY CENTER	POST OFFICE
ARENA	POLICE STATION
STADIUM	FIRE STATION
WILDLIFE REFUGE AREA	PUBLIC LIBRARY
WILDLIFE MANAGEMENT AREA	PUBLIC MUSEUM
RIVER OR STREAM (PERENNIAL)	EVENT CENTER
LAKE, POND OR RESERVOIR	CITY CENTERS
STREAM (NONPERENNIAL)	TRIBAL GOVERNMENT CENTER
DRAINAGE DITCH	CITY CENTER
WETLAND	LOCALLY KNOWN PLACE
ISLAND OR LAND	UNINCORPORATED COMMUNITY
REGIONAL WATERSHED	



LAST EDITED ON 1-29-2024

Population (U.S. Census 2020): 44,488

To request information from this document in an alternative format, call 651-366-4718 or 1-800-657-3774 (Greater Minnesota); 711 or 1-800-627-3529 (Minnesota Relay). You may also send an e-mail to ADArequest.dot@state.mn.us. (Please request at least one week in advance.)