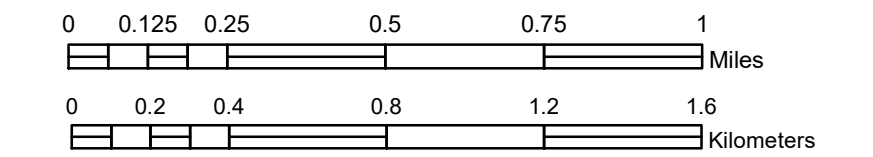


# MUNICIPALITY OF MINNEAPOLIS

PREPARED BY THE  
MINNESOTA DEPARTMENT OF TRANSPORTATION  
OFFICE OF TRANSPORTATION SYSTEM MANAGEMENT

IN COOPERATION WITH  
U.S. DEPARTMENT OF TRANSPORTATION  
FEDERAL HIGHWAY ADMINISTRATION

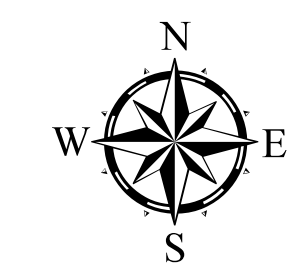
SCALE



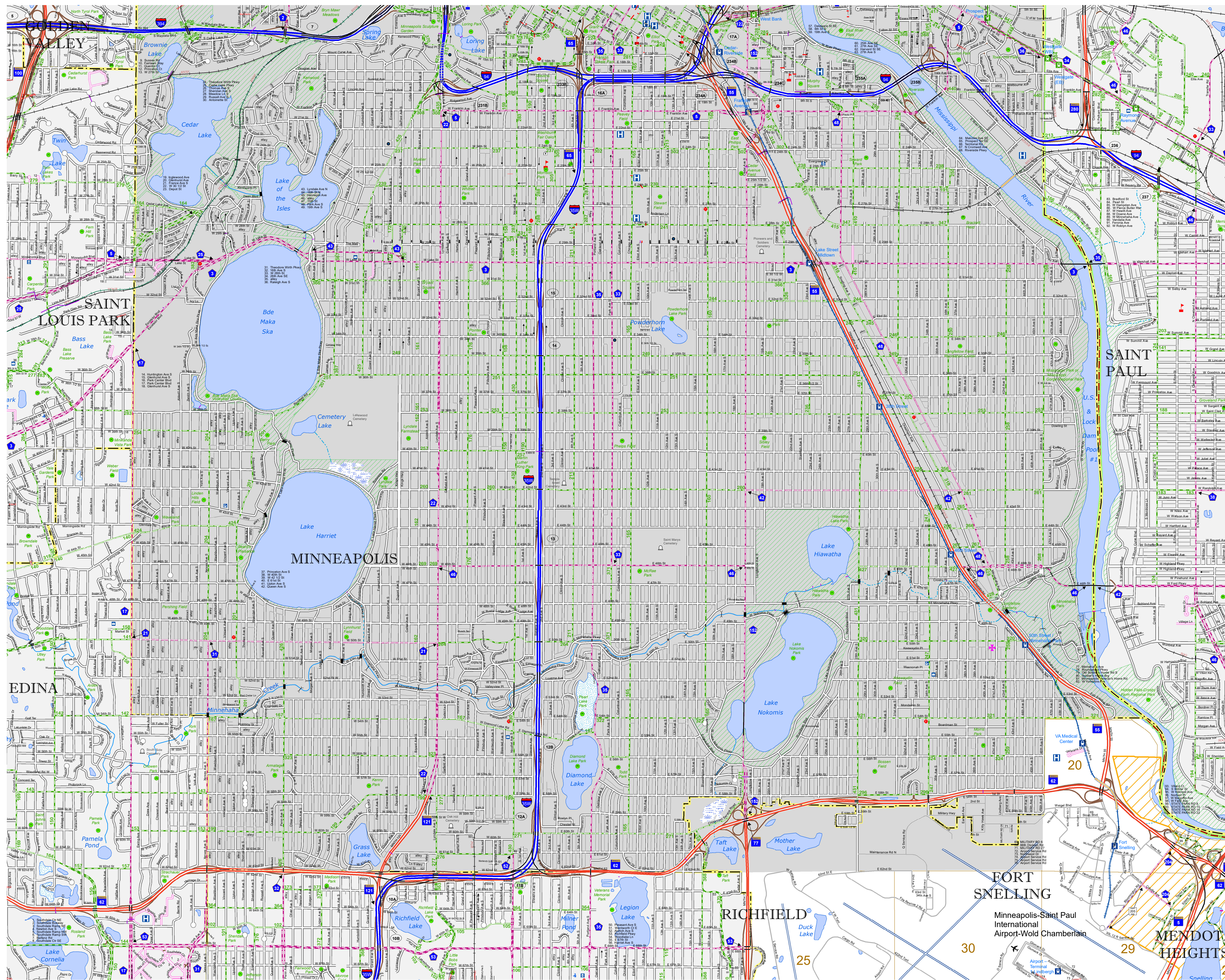
1 in = 1,600 ft

2023

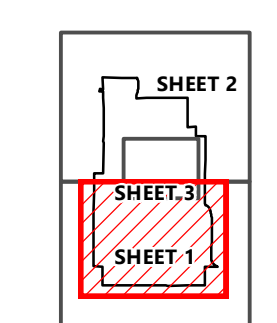
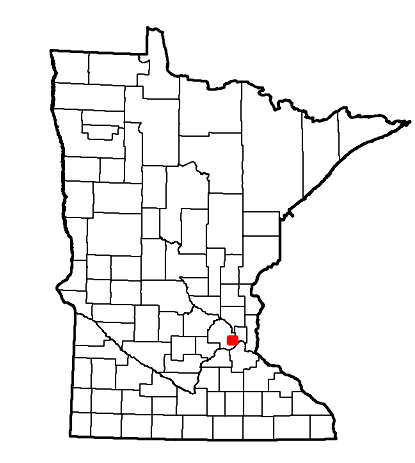
Projection:  
Transverse Mercator  
NAD 1986  
UTM Zone 15



North American Datum  
of 1986



ROAD AND ROADWAY FEATURES	PUBLIC SERVICE FEATURES
INTERSTATE	MNDOT OFFICE
US HIGHWAY	MNDOT TRUCK STATION
STATE AID HIGHWAY	HIGHWAY PATROL DISTRICT OFFICE
COUNTY ROAD	STATE TRAVEL INFORMATION CENTER
MUNICIPAL STREET	REST AREA (WALK OR BIKE)
MUNICIPAL STATE AID STREET	WAYSIDE (WALK OR BIKE)
PRIVATE STREET ROAD	PUBLIC ACCESS POINT
TOWNSHIP ROAD	FAIRGROUNDS
UNORGANIZED TERRITORY ROAD	PORT OF ENTRY
RAMP OR CONNECTOR	PARK AND RIDE LOT
INTERSTATE EXIT	PUBLIC UNIVERSITY COLLEGE
GREAT RIVER ROAD	PRIVATE UNIVERSITY COLLEGE
OTHER ROADS	FAIRGROUNDS
Facilities	Elementary School
State Park	Middle School
National Park	High School
National Forest	
National Wildlife State Game	
RAILROAD AND RAILWAY FEATURES	AVIATION FEATURES
EMPIRE BUILDER STATION (AIR/RAIL)	COMMERCIAL AIRPORT
MOOR STAR STATION (COMMUTER)	GENERAL AIRPORT
LIGHT RAIL	AIRSTRIP
BLUE LINE STATION	SEAPLANE
GREEN LINE STATION	AIRPORT RUNWAY
INFRASTRUCTURE FEATURES	CULTURAL FEATURES
LONGS BRIDGE (100' OR GREATER SPAN)	STATE HISTORICAL MARKER
MAJOR BRIDGE (20' TO 100' SPAN)	HISTORIC DISTRICT
MINOR BRIDGE (0' TO 20' SPAN)	HISTORIC SITE
ROAD TUNNEL (100' OR GREATER SPAN)	MONUMENT
RAILROAD BRIDGE (100' OR GREATER SPAN)	CEMETERY
RAILROAD BRIDGE (MAJOR 100' SPAN)	BOUNDARY FEATURES
SKYWAY	TRIBAL LAND
PEDESTRIAN BRIDGE	COUNTY
PEDESTRIAN TUNNEL	MUNICIPALITY
LOCK AND DAM	ADJACENT MUNICIPALITY
PUBLIC FACILITIES	FEDERAL ADJUSTED URBAN AREA (FAUA)
STATE CAPITOL	MILITARY
FEDERAL COURTHOUSE	STATE PARK
CITY HALL	REGIONAL PARK
ARMORY	NATIONAL FOREST
CITY HALL	TOWN HALL
COMMUNITY CENTER	STATE FOREST
ARENA	NATIONAL TRAIL
STADIUM	WILDLIFE REFUGE AREA
POST OFFICE	WILDLIFE MANAGEMENT AREA
POLICE STATION	HYDROLOGIC FEATURES
FIRE STATION	LAKE, POND, OR RESERVOIR
PUBLIC LIBRARY	STREAM (INTERMITTENT)
PUBLIC MUSEUM	STREAM (PERMANENT)
EVENT CENTER	DRAINAGE DITCH
	WETLAND
	ISLAND OR LAND
	REGIONAL WATERSHED
CITY CENTERS	
TRIBAL GOVERNMENT CENTER	
CITY CENTER	
LOCALLY INCORPORATED PLACE	
UNINCORPORATED COMMUNITY	



LAST EDITED ON 1-07-2023

Population (U.S. Census 2020): 429,954

To request information from this document in an alternative format, call 651-366-4718 or 1-800-657-3774 (Greater Minnesota); 711 or 1-800-627-3529 (Minnesota Relay). You may also send an e-mail to ADRequest.dot@state.mn.us. (Please request at least one week in advance.)