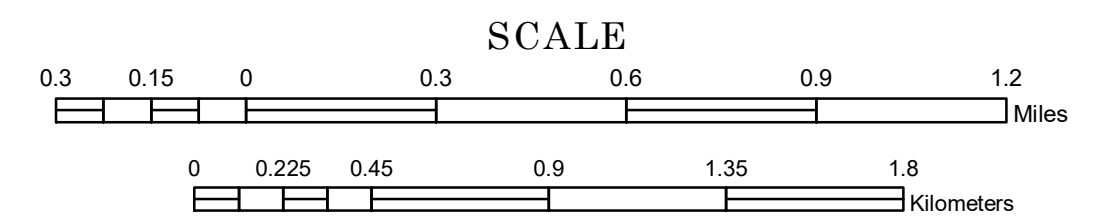


MUNICIPALITY OF FARMINGTON

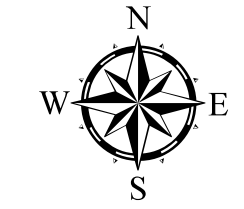
PREPARED BY THE
MINNESOTA DEPARTMENT OF TRANSPORTATION
OFFICE OF TRANSPORTATION SYSTEM MANAGEMENT

IN COOPERATION WITH
U.S. DEPARTMENT OF TRANSPORTATION
FEDERAL HIGHWAY ADMINISTRATION

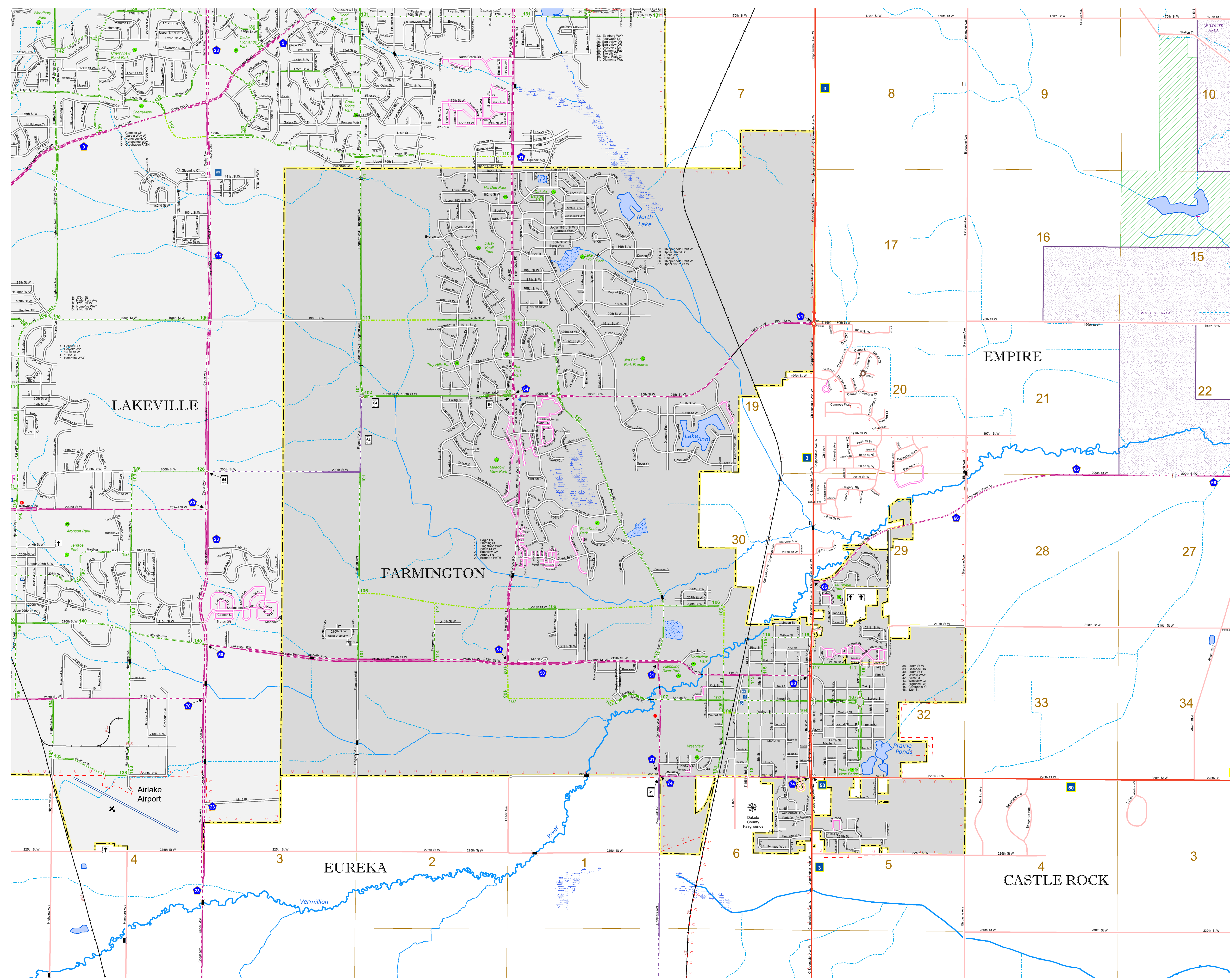


1 in = 1,600 ft
2019

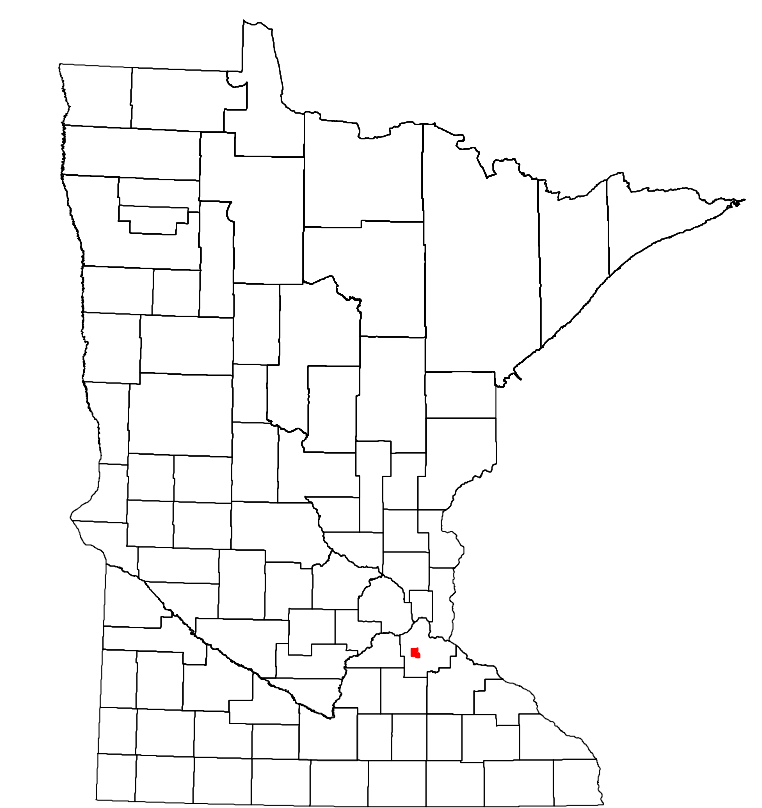
Projection:
Transverse Mercator
NAD 1986
UTM Zone 15



North American Datum
of 1986



ROAD AND ROADWAY FEATURES	PUBLIC SERVICE FEATURES
INTERSTATE	MINDOT OFFICE
US HIGHWAY	MINDOT TRUCK STATION
MN HIGHWAY	HIGHWAY PATROL DISTRICT OFFICE
COUNTY STATE AID HIGHWAY	STATE TRAVEL INFORMATION CENTER
COUNTY ROAD	REST AREA (FULL SERVICE)
MUNICIPAL STATE AID STREET	REST AREA (VAULT TOILET)
MUNICIPAL STREET	WIDEVIEW (ONLY OR P/T TOILET)
PRIVATE STREET/ROAD	LOCAL PARK
TOWNSHIP ROAD	PUBLIC ACCESS POINT
UNORGANIZED TERRITORY ROAD	FAIRGROUNDS
RAMP OR CONNECTOR	PORT OF ENTRY
INTERSTATE EXIT	PARK AND RIDE LOT
GREAT RIVER ROAD	PUBLIC UNIVERSITY/COLLEGE
OTHER ROADS	PRIVATE UNIVERSITY/COLLEGE
Frontage	State Park
Indian Service	National Park
Military	National Monument
	National Forest
	National Wildlife State Game
	State Forest
	Aviation Features
COMMERCIAL AIRPORT	STATE HISTORICAL MARKER
GENERAL AIRPORT	HISTORIC DISTRICT
AIRSTRIP	MONUMENT
SEAPLANE	BOUNDARY FEATURES
AIRPORT RUNWAY	TRIBAL LAND
	COUNTY
RAILWAY	MUNICIPALITY
EMPIRE BUILDER STATION (AMTRAK)	ADJACENT MUNICIPALITY
NORTHSTAR STATION (COMRAKER)	FEDERAL ADJUSTED URBAN AREA (2014)
	MILITARY
	VOYAGEURS NATIONAL PARK
	BOUNDARY WATERS CANOE AREA WILDERNESS
	STATE PARK
	REGIONAL PARK
	NATIONAL FOREST
	NATIONAL AND STATE FOREST
	STATE FOREST
	NATIONAL TRAIL
	WILDLIFE REFUGE AREA
	WILDLIFE MANAGEMENT AREA
	WILDLIFE REFUGES
	HYDROLOGIC FEATURES
	RIVER OR STREAM (PERMANENT)
	LAKE, POND OR RESERVOIR
	STREAM (INTERMITTENT)
	DRAINAGE DITCH
	WETLAND
	ISLAND OR LAND
	REGIONAL WATERSHED
	PUBLIC FACILITIES
STATE CAPITOL	
FEDERAL COURTHOUSE	
COUNTY COURTHOUSE	
ARMORY	
	CITY CENTERS
	TRIBAL GOVERNMENT CENTER
	CITY CENTER
	LOCALLY KNOWN PLACE
	UNINCORPORATED COMMUNITY



Population (U.S. Census 2010): 21086

To request information from this document in an alternative format, call 651-366-4718 or 1-800-657-3774 (Greater Minnesota); 711 or 1-800-627-3529 (Minnesota Relay). You may also send an e-mail to ADAREquest.dot@state.mn.us. (Please request at least one week in advance.)