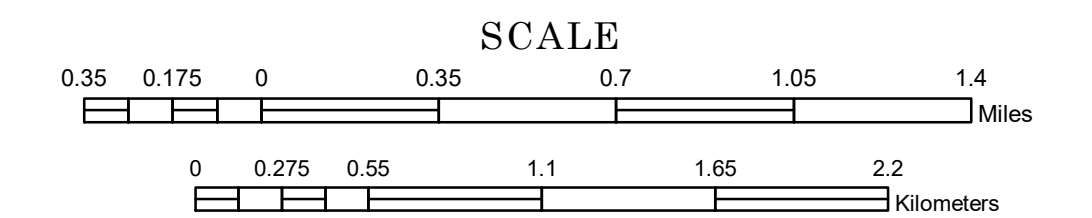


# MUNICIPALITY OF MANKATO

PREPARED BY THE  
MINNESOTA DEPARTMENT OF TRANSPORTATION  
OFFICE OF TRANSPORTATION SYSTEM MANAGEMENT

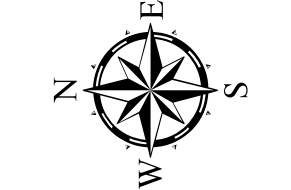
IN COOPERATION WITH  
U.S. DEPARTMENT OF TRANSPORTATION  
FEDERAL HIGHWAY ADMINISTRATION



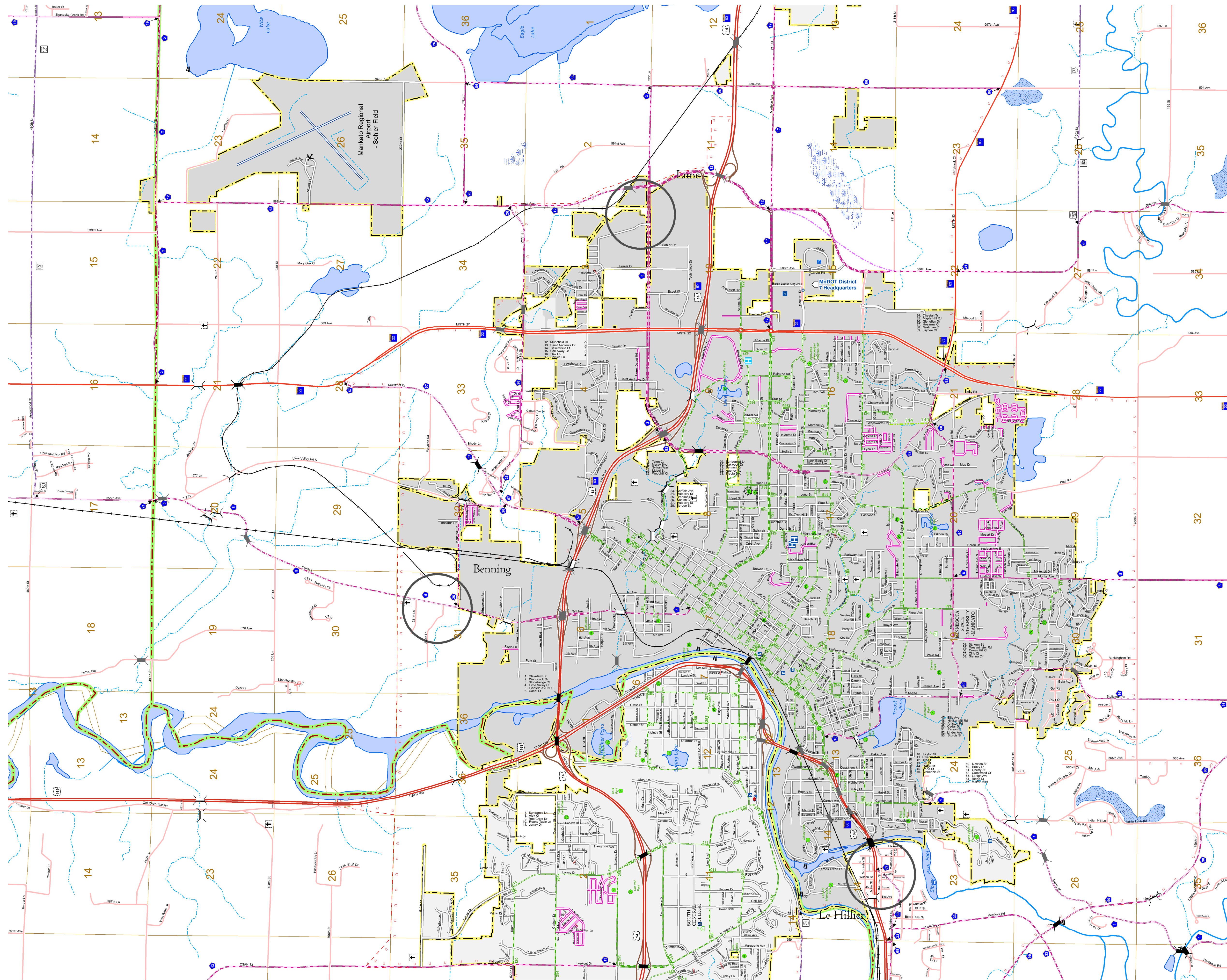
1 in = 2,000 ft

2018

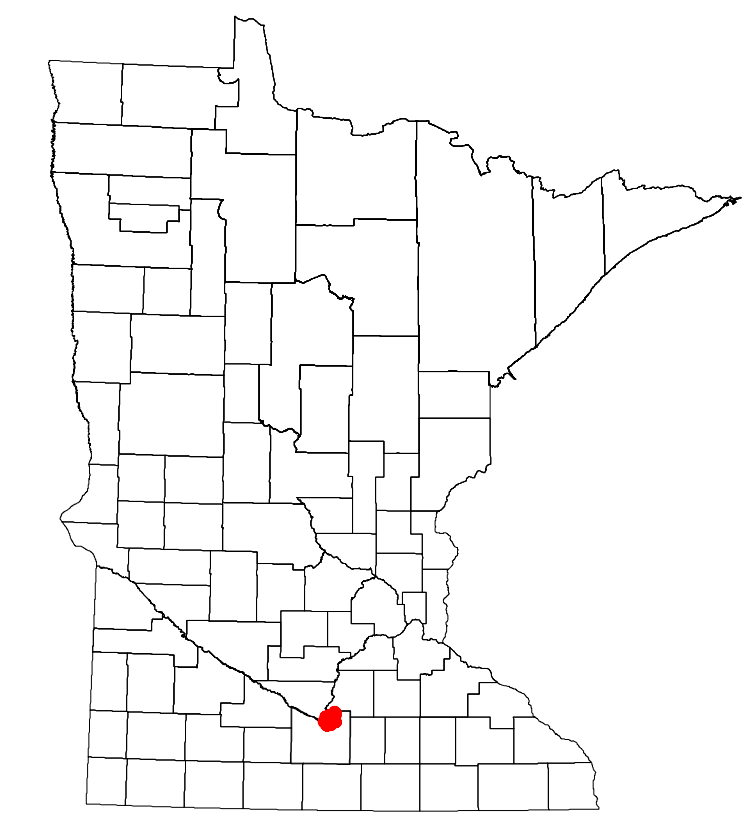
Projection:  
Transverse Mercator  
NAD 1986  
UTM Zone 15



North American Datum  
of 1986



ROAD AND ROADWAY FEATURES		PUBLIC SERVICE FEATURES	
INTERSTATE		MNDOT OFFICE	
US HIGHWAY		MNDOT TRUCK STATION	
MIN HIGHWAY		HIGHWAY PATROL DISTRICT OFFICE	
COUNTY STATE AID HIGHWAY		STATE TRAVEL INFORMATION CENTER	
COUNTY ROAD		REST AREA (FULL SERVICE)	
MUNICIPAL STATE AID STREET		REST AREA (VAULT TOILET)	
MUNICIPAL STREET		WAYSIDE (VAULT OR PLY TOILET)	
PRIVATE STREET/ROAD		LOCAL PARK	
TOWNSHIP ROAD		PUBLIC ACCESS POINT	
UNORGANIZED TERRITORY ROAD		FAIRGROUNDS	
RAMP OR CONNECTOR		PORT OF ENTRY	
INTERSTATE EXIT		PARK AND RIDE LOT	
GREAT RIVER ROAD		MIN STATE COLLEGE AND UNIVERSITY SYSTEM (MNSCU)	
OTHER ROADS		UNIVERSITY OF MN SYSTEM	
STATE PARK		CULTURAL FEATURES	
NATIONAL PARK		STATE HISTORICAL MARKER	
NATIONAL MONUMENT		HISTORIC DISTRICT	
NATIONAL WILDLIFE STATE GAME		HISTORIC SITE	
AVIATION FEATURES		MONUMENT	
COMMERCIAL AIRPORT		BOUNDARY FEATURES	
GENERAL AIRPORT		TRIBAL LAND	
AIRSTRIP		COUNTY	
SEAPLANE		MUNICIPALITY	
AIRPORT RUNWAY		ADJACENT MUNICIPALITY	
RAILROAD AND RAILWAY FEATURES		FEDERAL ADJUSTED URBAN AREA (2014)	
RAILWAY		MILITARY	
EMPIRE BUILDER STATION (AMTRAK)		VOYAGEURS NATIONAL PARK	
NORTHSTAR STATION (COMBIKERS)		BOUNDARY WATERS CANDE AREA WILDERNESS	
LIGHT RAIL		STATE PARK	
BLUE LINE		REGIONAL PARK	
GREEN LINE		NATIONAL FOREST	
INFRASTRUCTURE FEATURES		NATIONAL AND STATE FOREST	
LONG BRIDGE (100' OR GREATER SPAN)		STATE FOREST	
MAJOR BRIDGE (20' TO 100' SPAN)		NATIONAL TRAIL	
MINOR BRIDGE (5' TO 20' SPAN)		WILDLIFE REFUGUE AREA	
DAM		WILDLIFE MANAGEMENT AREA	
LOCK AND DAM		HYDROLOGIC FEATURES	
PUBLIC FACILITIES		RIVER OR STREAM (PERMANENT)	
STATE CAPITOL		LAKE, POND OR RESERVOIR	
FEDERAL COURTHOUSE		STREAM (INTERMITTENT)	
COUNTY COURTHOUSE		DRAINAGE DITCH	
ARMORY		WETLAND	
CITY CENTERS		ISLAND OR LAND	
TRIBAL GOVERNMENT CENTER		REGIONAL WATERSHED	
CITY CENTER			
LOCALLY KNOWN PLACE			
UNINCORPORATED COMMUNITY			



Population (U.S. Census 2010): 39309

To request information from this document in an alternative format, call 651-366-4718 or 1-800-657-3774 (Greater Minnesota); 711 or 1-800-627-3529 (Minnesota Relay). You may also send an e-mail to [ADArequest.dot@state.mn.us](mailto:ADArequest.dot@state.mn.us). (Please request at least one week in advance.)