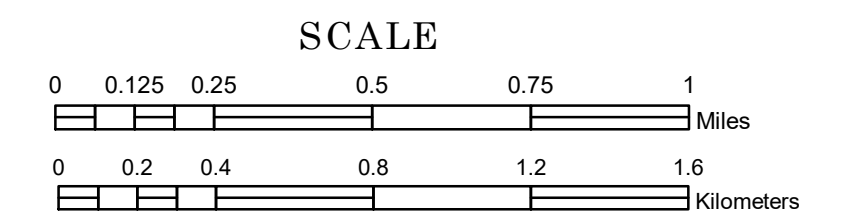


MUNICIPALITY OF SAINT FRANCIS

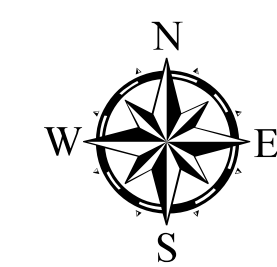
PREPARED BY THE
MINNESOTA DEPARTMENT OF TRANSPORTATION
OFFICE OF TRANSPORTATION SYSTEM MANAGEMENT

IN COOPERATION WITH
U.S. DEPARTMENT OF TRANSPORTATION
FEDERAL HIGHWAY ADMINISTRATION

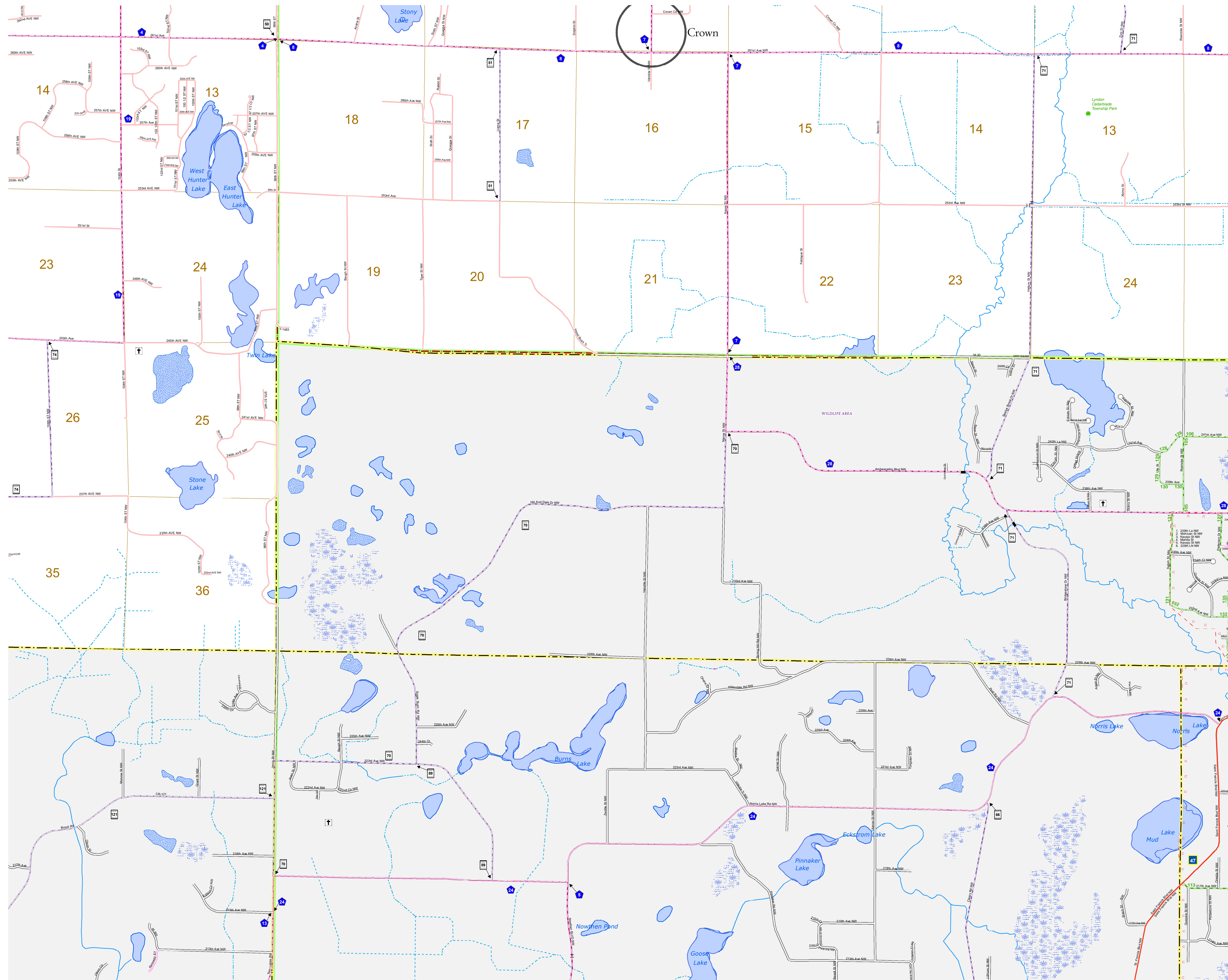


2019

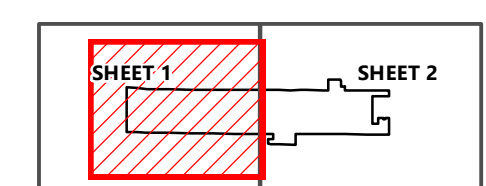
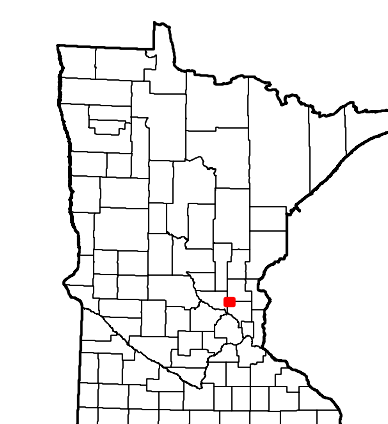
Projection:
Transverse Mercator
NAD 1986
UTM Zone 15



North American Datum
of 1986



ROAD AND ROADWAY FEATURES	PUBLIC SERVICE FEATURES
INTERSTATE	MINDOT OFFICE
US HIGHWAY	MINDOT TRUCK STATION
MN HIGHWAY	HIGHWAY PATROL DISTRICT OFFICE
COUNTY STATE AID HIGHWAY	STATE TRAVEL INFORMATION CENTER
COUNTY ROAD	REST AREA (FULL SERVICE)
MUNICIPAL STATE AID STREET	REST AREA (VAULT TOILET)
MUNICIPAL STREET	WAYSIDE (VAULT OR PIT TOILET)
PRIVATE STREET/ROAD	LOCAL PARK
TOWNSHIP ROAD	PUBLIC ACCESS POINT
UNORGANIZED TERRITORY ROAD	FAIRGROUNDS
RAMP OR CONNECTOR	PORT OF ENTRY
INTERSTATE EXIT	PARK AND RIDE LOT
GREAT RIVER ROAD	MN STATE COLLEGE AND UNIVERSITY SYSTEM (MNSCU)
OTHER ROADS	UNIVERSITY OF MN SYSTEM
FRONTAGE	CULTURAL FEATURES
INDIAN SERVICE	STATE HISTORICAL MARKER
NATIONAL PARK	HISTORIC DISTRICT
NATIONAL MONUMENT	HISTORIC SITE
NATIONAL FOREST	MONUMENT
NATIONAL WILDLIFE	BOUNDARY FEATURES
STATE GAME	TRIBAL LAND
AVIATION FEATURES	COUNTY
COMMERCIAL AIRPORT	MUNICIPALITY
GENERAL AIRPORT	ADJACENT MUNICIPALITY
AIRSTRIP	FEDERAL ADJUSTED URBAN AREA (2014)
SEAPLANE	MILITARY
AIRPORT RUNWAY	VOYAGERS NATIONAL PARK
RAILWAY	BOUNDARY WATERS CANOE AREA WILDERNESS
EMPIRE BUILDER STATION (AMTRAK)	STATE PARK
NORTHSTAR STATION (COMMUTER)	REGIONAL PARK
LIGHT RAIL	NATIONAL FOREST
BLUE LINE	NATIONAL AND STATE FOREST
GREEN LINE	STATE FOREST
INFRASTRUCTURE FEATURES	NATIONAL TRAIL
LONG BRIDGE (300' OR GREATER SPAN)	WILDLIFE REFUGUE AREA
MAJOR BRIDGE (25' TO 300' SPAN)	WILDLIFE MANAGEMENT AREA
MINOR BRIDGE (5' TO 25' SPAN)	HYDROLOGIC FEATURES
DAM	RIVER OR STREAM (PERMANENT)
LOCK AND DAM	LAKE, POND OR RESERVOIR
STATE CAPITOL	STREAM (INTERMITTENT)
FEDERAL COURTHOUSE	DRAINAGE DITCH
COUNTY COURTHOUSE	WETLAND
ARMORY	ISLAND OR LAND
CITY CENTERS	REGIONAL WATERSHED
TRIBAL GOVERNMENT CENTER	
CITY CENTER	
LOCALLY INCORPORATED PLACE	
UNINCORPORATED COMMUNITY	



To request information from this document in an alternative format, call 651-366-4718 or 1-800-657-3774 (Greater Minnesota); 711 or 1-800-627-3529 (Minnesota Relay). You may also send an e-mail to ADArequest.dot@state.mn.us. (Please request at least one week in advance.)

Population (U.S. Census 2010): 7,218