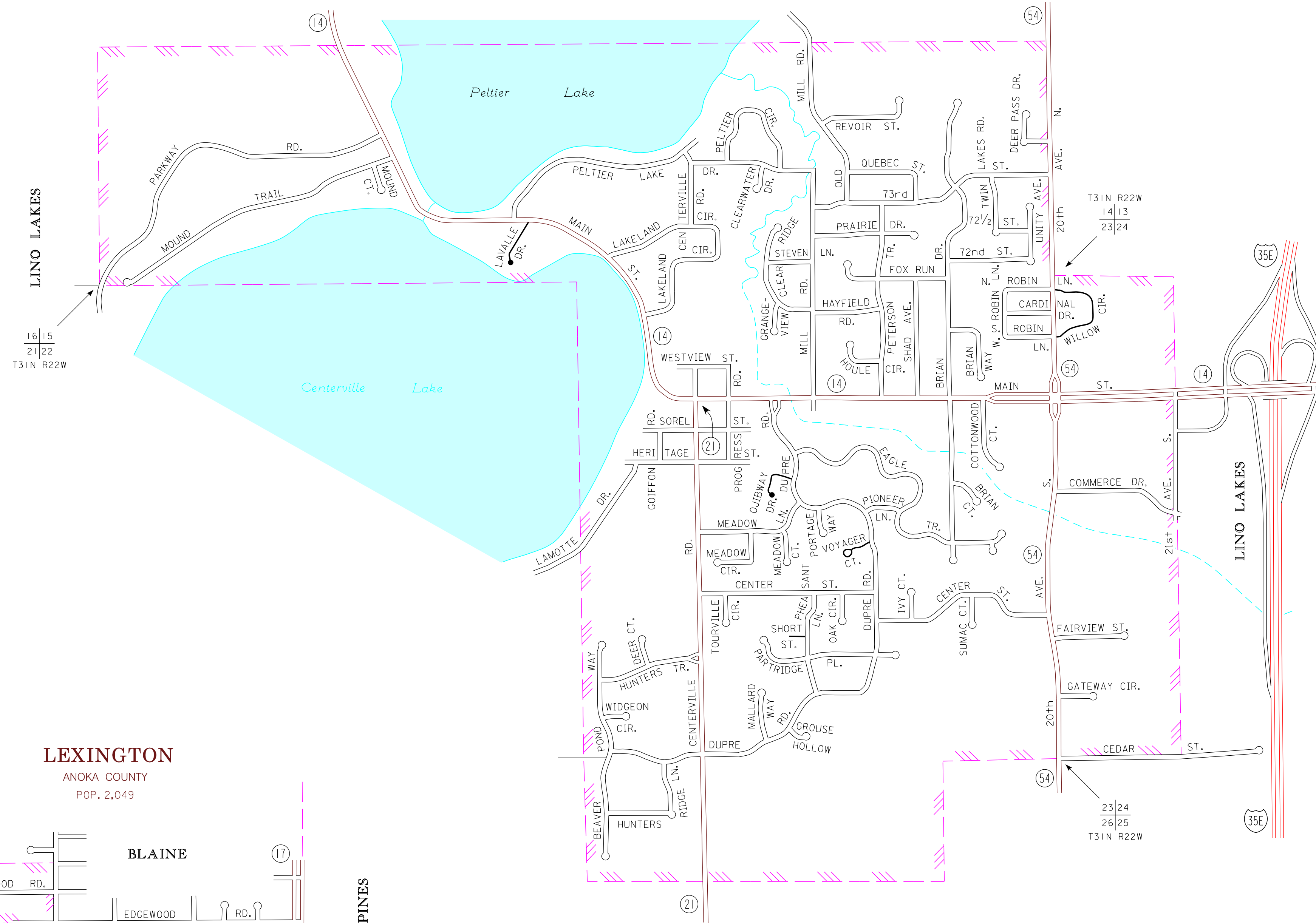


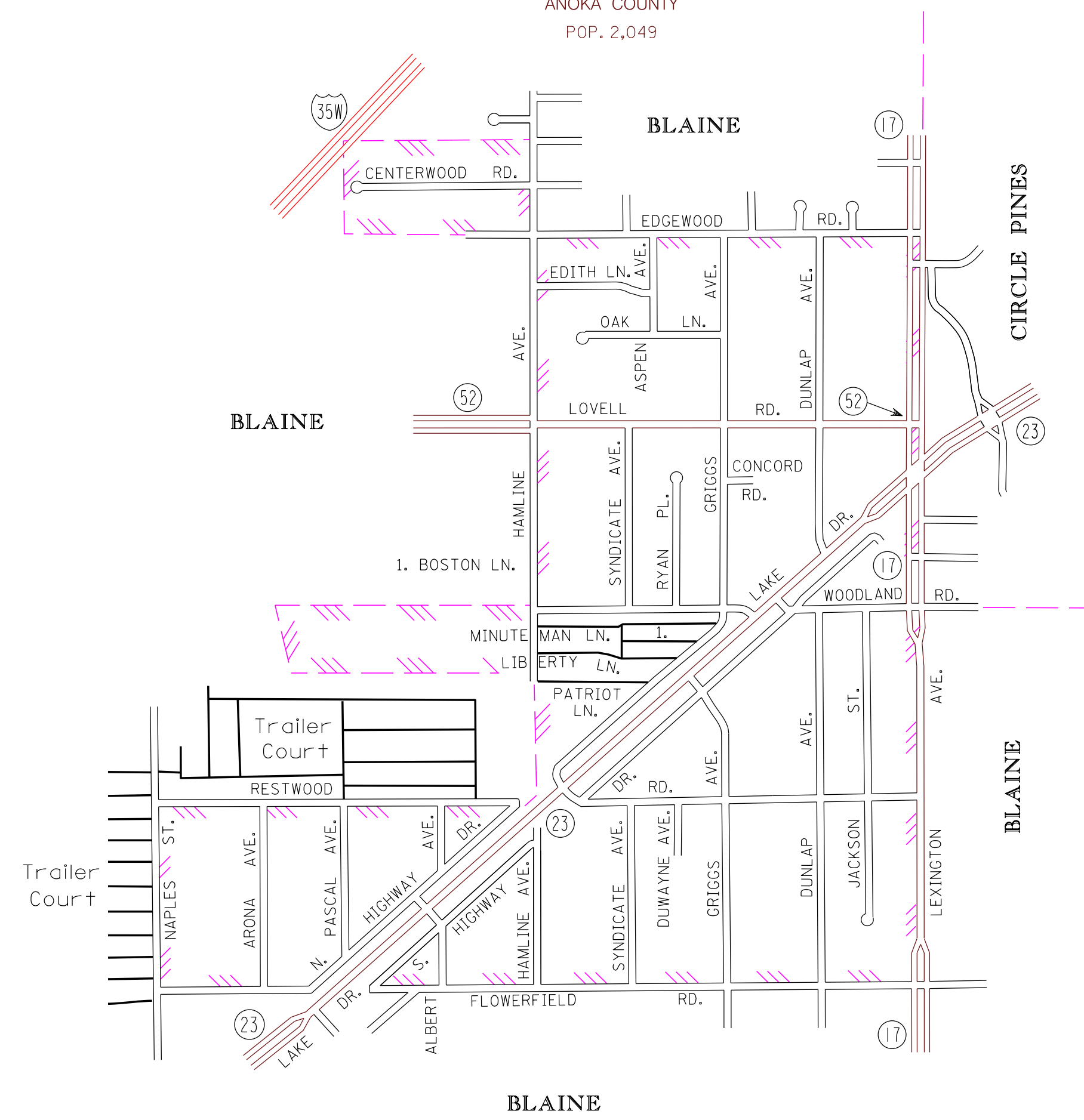
**CENTERVILLE**  
ANOKA COUNTY  
POP. 3,792

**LINO LAKES**



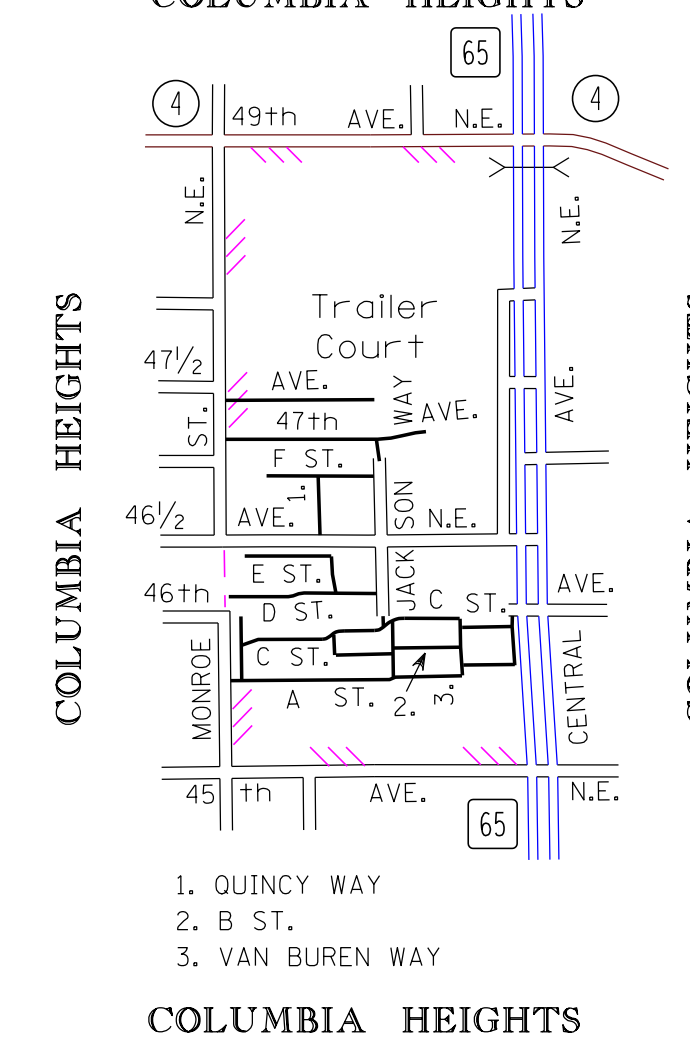
**LEXINGTON**  
ANOKA COUNTY  
POP. 2,049

**BLAINE**



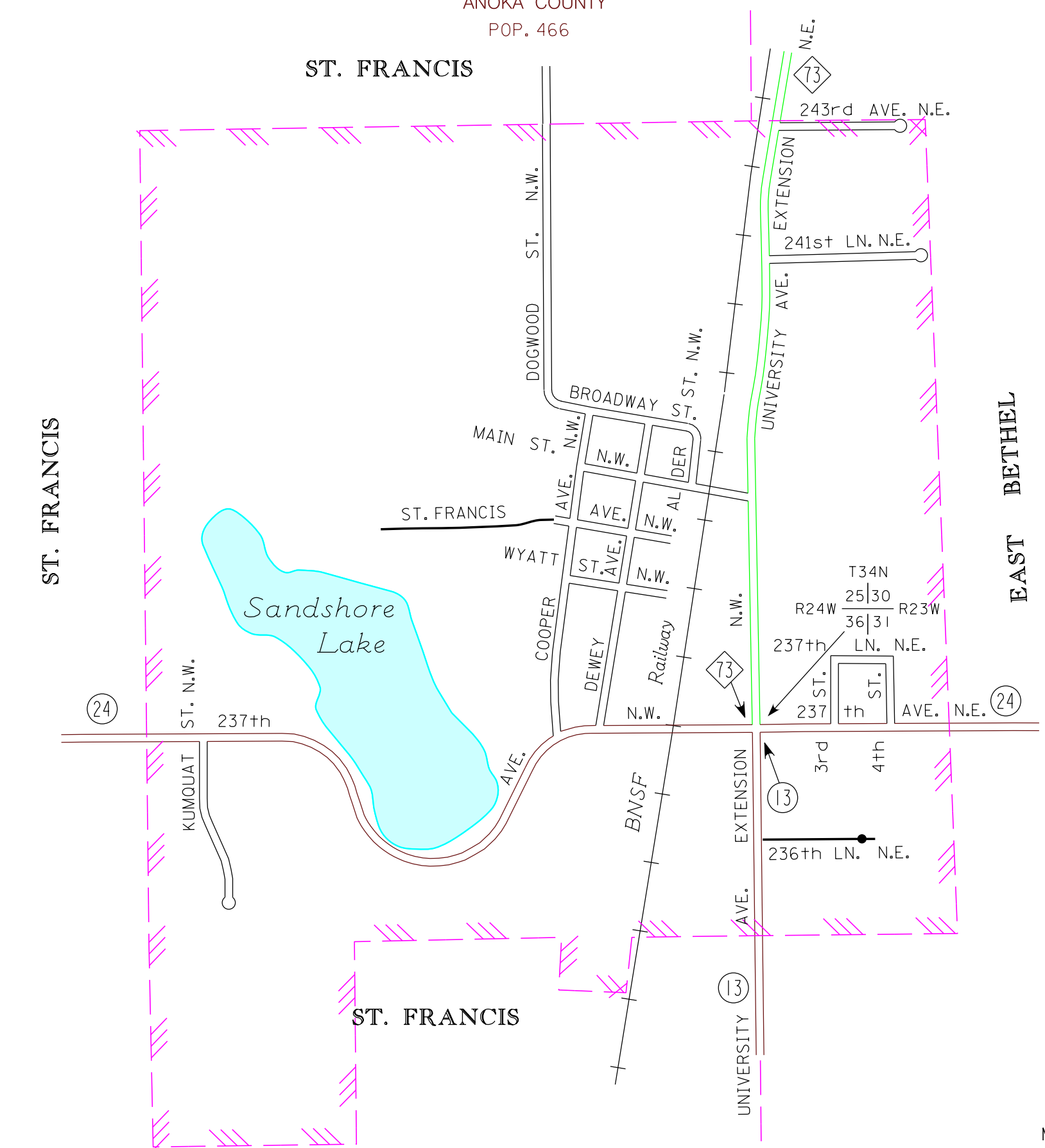
**HILLTOP**  
ANOKA CO.  
POP. 744

**COLUMBIA HEIGHTS**



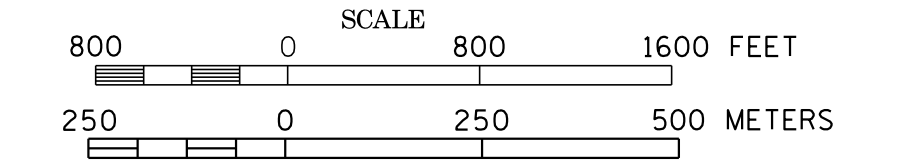
**BETHEL**  
ANOKA COUNTY  
POP. 466

**ST. FRANCIS**

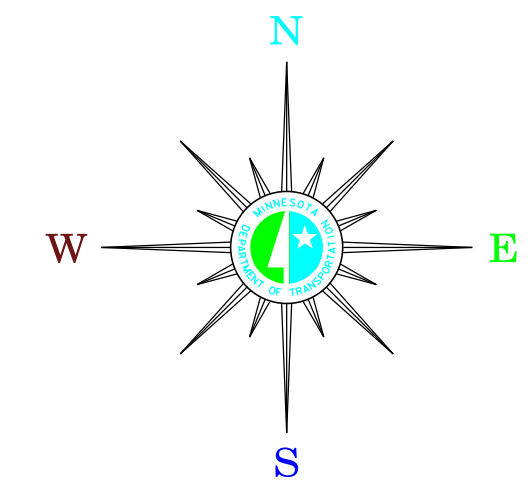


MUNICIPALITIES OF  
**ANOKA CO.**

PREPARED BY THE  
MINNESOTA DEPARTMENT OF TRANSPORTATION  
OFFICE OF TRANSPORTATION SYSTEM MANAGEMENT  
IN COOPERATION WITH  
U.S. DEPARTMENT OF TRANSPORTATION  
FEDERAL HIGHWAY ADMINISTRATION



**2015**  
BASIC DATA - 2014



**LEGEND**

- INTERSTATE TRUNK HIGHWAY..... (I-35)
- U.S. TRUNK HIGHWAY..... (14)
- STATE TRUNK HIGHWAY..... (54)
- COUNTY STATE AID HIGHWAY..... (23)
- COUNTY ROAD..... (52)
- PUBLIC ROAD.....
- PRIVATE ROAD.....
- CORPORATE LIMITS.....

MUNICIPALITIES SHOWN  
ON THIS SHEET  
BETHEL  
CENTERVILLE  
HILLTOP  
LEXINGTON

To request information from this document in an alternative format, call 651-368-7715 or 1-800-667-3774 (Greater Minnesota); 711 or 1-800-627-3529 (Minnesota Relay). You may also send an e-mail to ADRequest.dot@state.mn.us. (Please request at least one week in advance).

NOTE: 2010 U.S. CENSUS FIGURES SHOWN FOR ALL MUNICIPALITIES UNLESS OTHERWISE STATED.