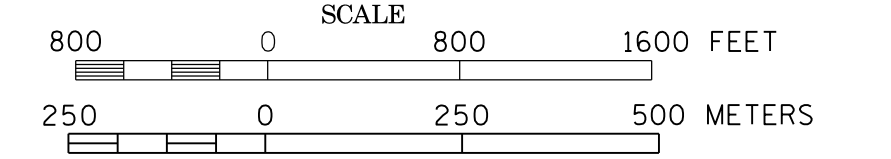
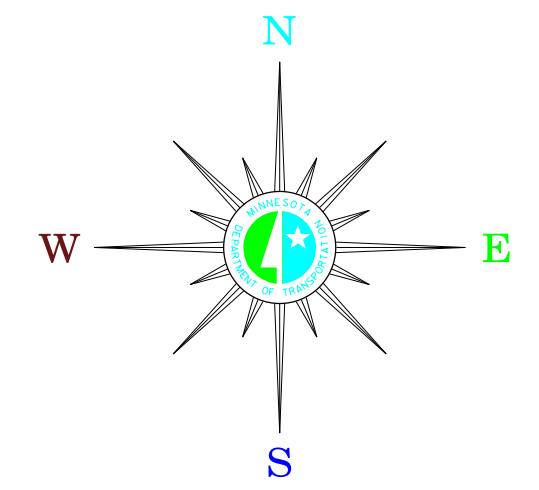


MUNICIPALITIES OF  
**BROWN CO.**

PREPARED BY THE  
MINNESOTA DEPARTMENT OF TRANSPORTATION  
OFFICE OF TRANSPORTATION SYSTEM MANAGEMENT  
IN COOPERATION WITH  
U.S. DEPARTMENT OF TRANSPORTATION  
FEDERAL HIGHWAY ADMINISTRATION



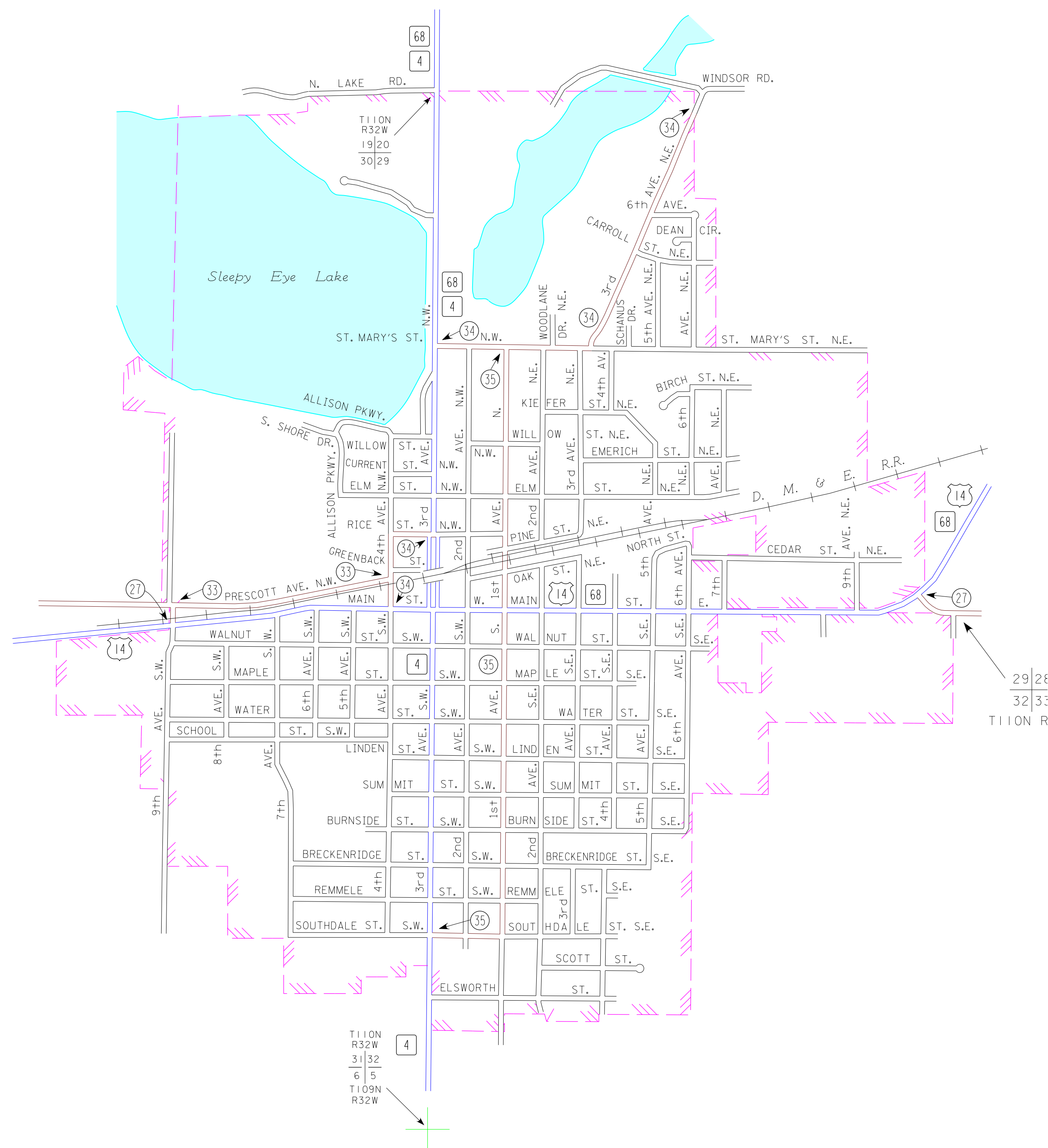
2015  
BASIC DATA - 2011



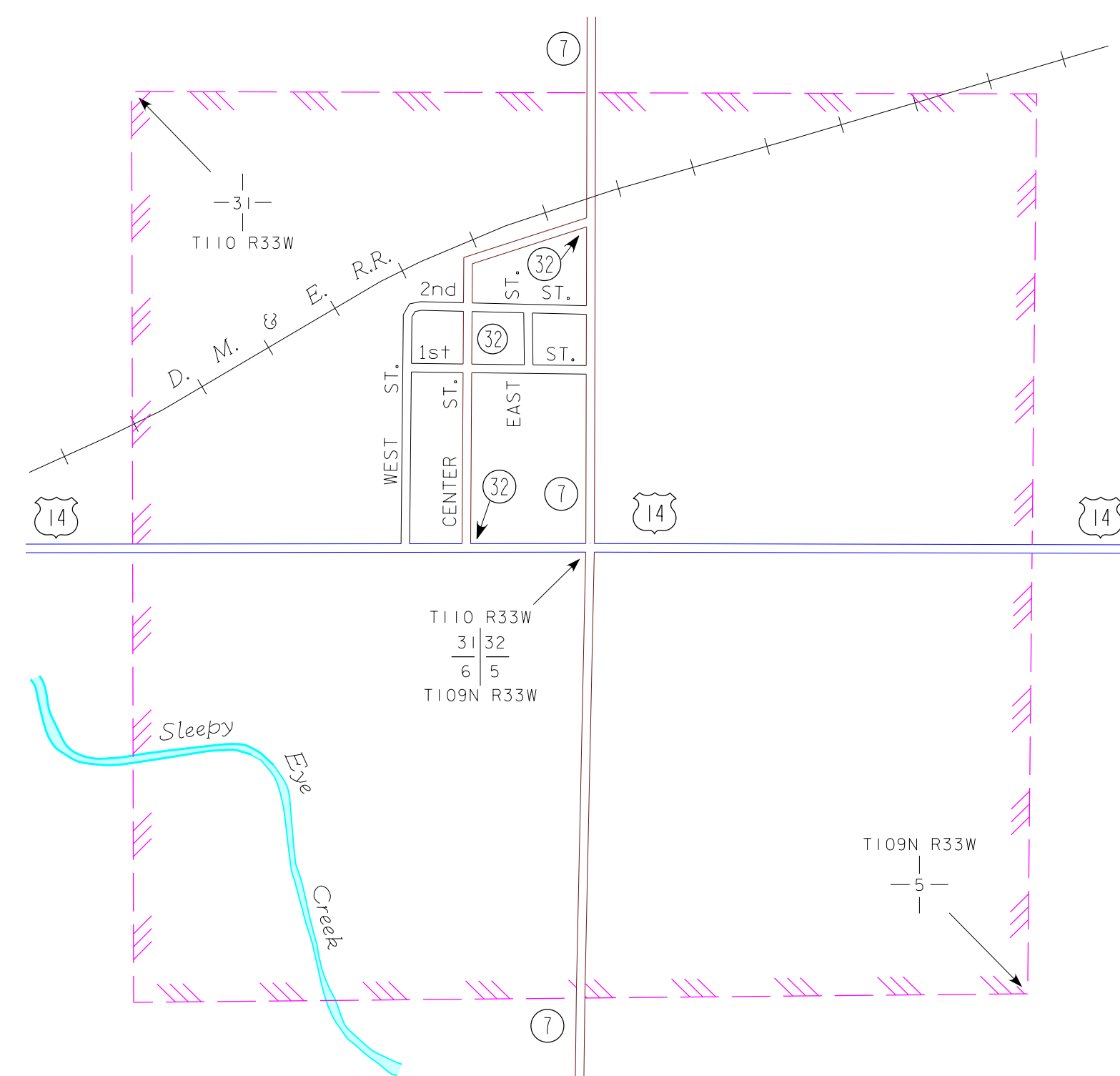
**LEGEND**

- INTERSTATE TRUNK HIGHWAY..... (I-35)
- U.S. TRUNK HIGHWAY..... (14)
- STATE TRUNK HIGHWAY..... (35)
- COUNTY STATE AID HIGHWAY..... (27)
- COUNTY ROAD..... (34)
- PUBLIC ROAD.....
- PRIVATE ROAD.....
- CORPORATE LIMITS.....

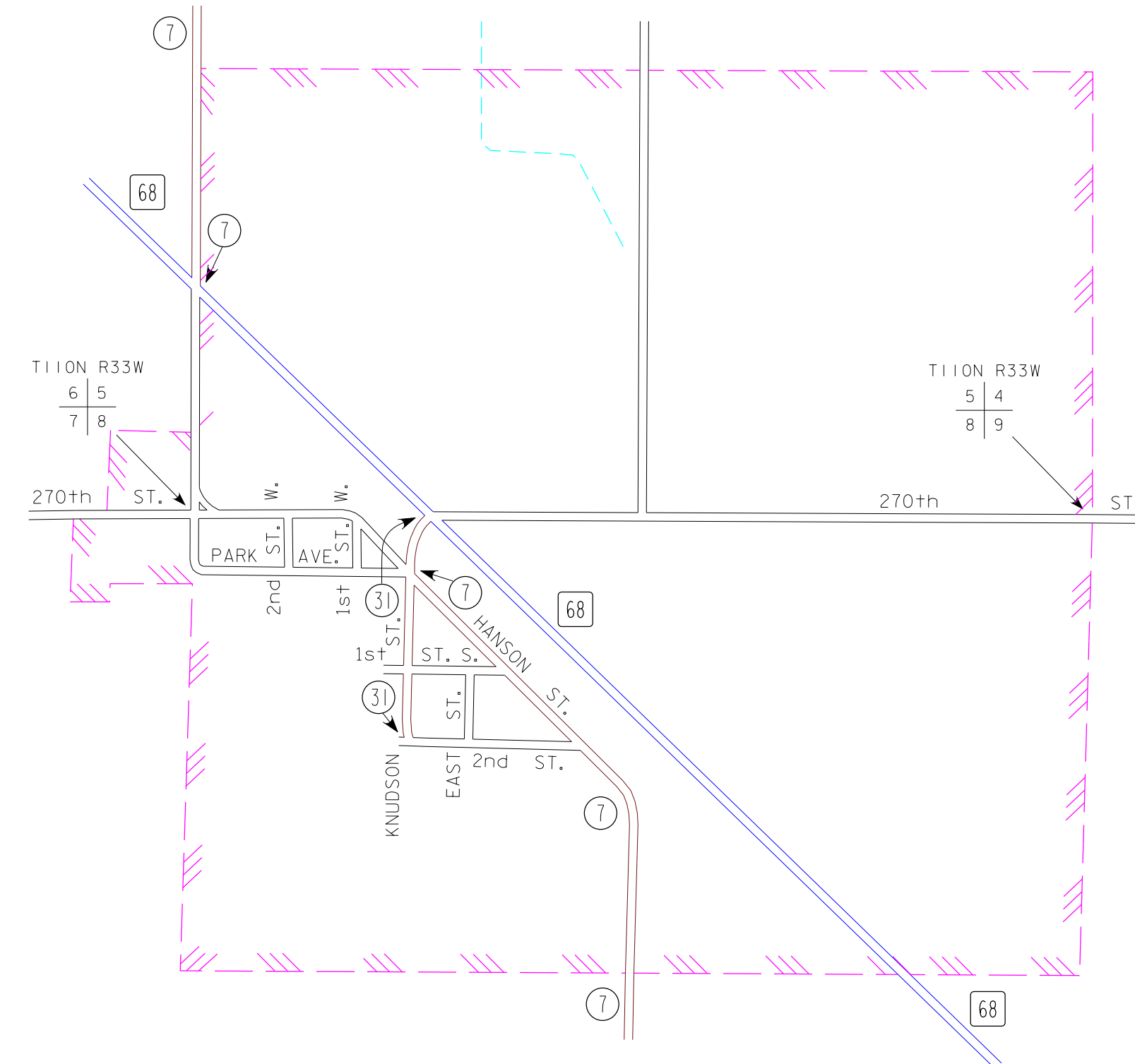
**SLEEPY EYE**  
BROWN COUNTY  
POP. 3,599



**COBDEN**  
BROWN COUNTY  
POP. 36



**EVAN**  
BROWN COUNTY  
POP. 86



MUNICIPALITIES SHOWN  
ON THIS SHEET  
COBDEN  
EVAN  
SLEEPY EYE

To request information from this document in an alternative format, call 651-366-4718 or 1-800-657-3774 (Greater Minnesota); 711 or 1-800-627-3529 (Minnesota Relay). You may also send an e-mail to ADArequest.dor@state.mn.us. (Please request at least one week in advance.)

NOTE: 2010 U.S. CENSUS FIGURES SHOWN FOR ALL MUNICIPALITIES UNLESS OTHERWISE STATED.