

MUNICIPALITY OF BLUFFTON

PREPARED BY THE
MINNESOTA DEPARTMENT OF TRANSPORTATION
OFFICE OF TRANSPORTATION SYSTEM MANAGEMENT

IN COOPERATION WITH
U.S. DEPARTMENT OF TRANSPORTATION
FEDERAL HIGHWAY ADMINISTRATION

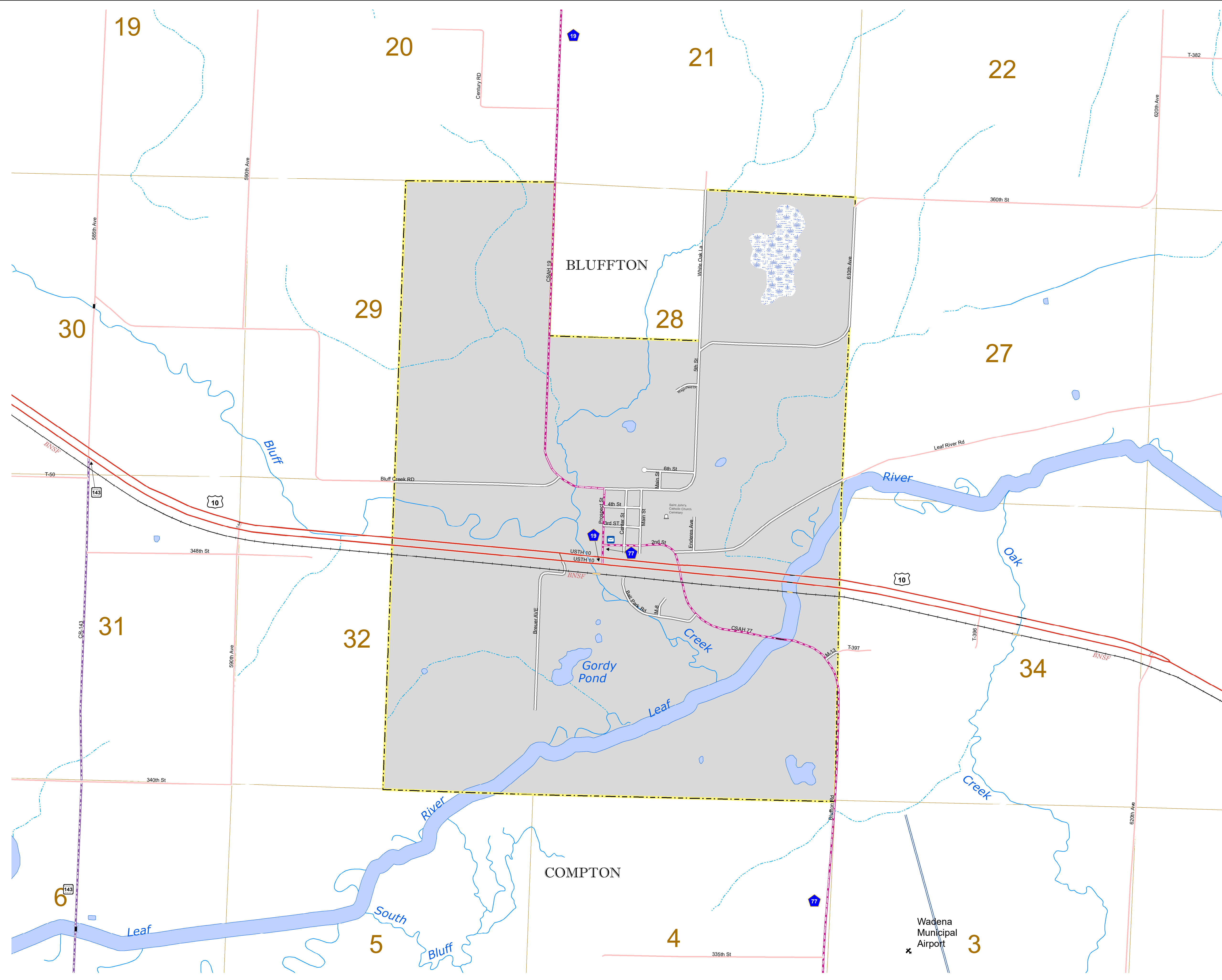


2022

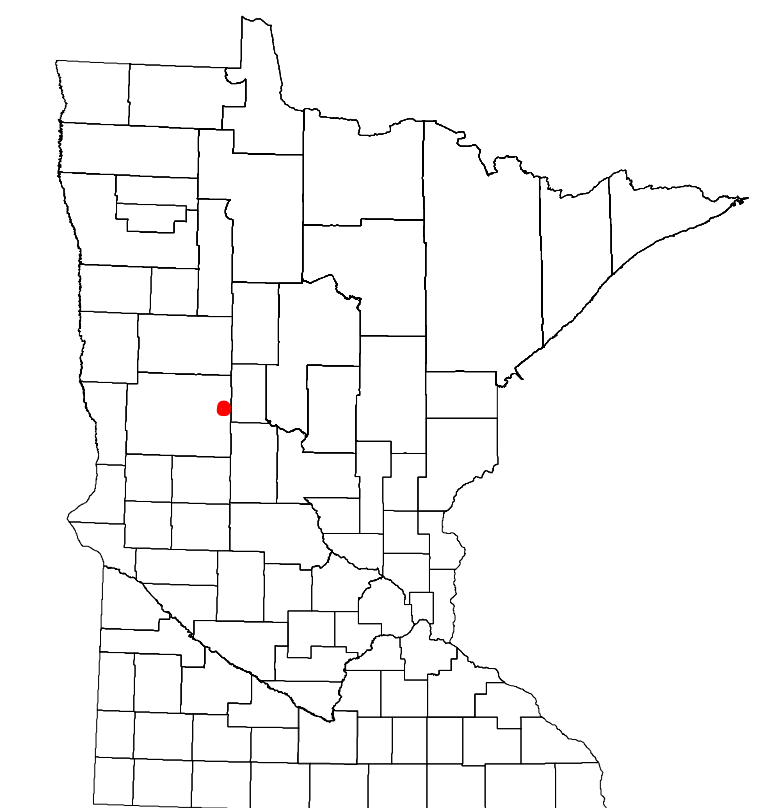
Projection:
Transverse Mercator
NAD 1986
UTM Zone 15



North American Datum
of 1986



ROAD AND ROADWAY FEATURES	PUBLIC SERVICE FEATURES
INTERSTATE	MNDOT OFFICE
US HIGHWAY	MNDOT TRUCK STATION
MINNAPOLIS HIGHWAY	HIGHWAY PATROL DISTRICT OFFICE
COUNTY STATE AID HIGHWAY	STATE TRAVEL INFORMATION CENTER
COUNTY ROAD	REST AREA (Full Service)
MUNICIPAL STREET	REST AREA (Quick Turn)
MUNICIPAL STATE AID STREET	WAYSIDE (Only on Pk Trunk)
PRIVATE STREET/ROAD	PUBLIC ACCESS POINT
TOWNSHIP ROAD	LOCAL PARK
UNORGANIZED TERRITORY ROAD	FARMS/BOUNDS
RAILROAD CONNECTOR	PORT OF ENTRY
INTERSTATE EXIT	PARK AND RIDE LOT
GREAT RIVER ROAD	PUBLIC UNIVERSITY COLLEGE
OTHER ROADS	PRIVATE UNIVERSITY COLLEGE
FARMROAD	ELEMENTARY SCHOOL
INDUS SERVICE	MIDDLE SCHOOL
NATIONAL PARK	NATIONAL WILDLIFE STATE GAME
MILITARY	HIGH SCHOOL
RAILROAD AND RAILWAY FEATURES	AVIATION FEATURES
EMPIRE BUILDER STATION (AMTRAK)	COMMERCIAL AIRPORT
NORTHSTAR STATION (COMMUTER)	GENERAL AIRPORT
LIGHT RAIL	AIRSTRIP
BLUE LINE STATION	SEAPLANE
GREEN LINE STATION	AIRPORT RUNWAY
INFRASTRUCTURE FEATURES	CULTURAL FEATURES
LONG BRIDGE (100' OR GREATER SPAN)	STATE HISTORICAL MARKER
MAJOR BRIDGE (20' TO 100' SPAN)	HISTORIC DISTRICT
MINOR BRIDGE (2' TO 20' SPAN)	HISTORIC SITE
ROAD TUNNEL (100' OR GREATER SPAN)	MONUMENT
RAILROAD BRIDGE (100' OR GREATER SPAN)	CEMETERY
RAILROAD BRIDGE (LESSER 100' SPAN)	BOUNDARY FEATURES
SKYWAY	TRIBAL LAND
PEDESTRIAN BRIDGE	COUNTY
PEDESTRIAN TUNNEL	MUNICIPALITY
DAM	ADJACENT MUNICIPALITY
LOCK AND DAM	FEDERAL ADJUSTED URBAN AREA (2014)
PUBLIC FACILITIES	STATE CAPITOL
FEDERAL COURTHOUSE	MILITARY
COUNTY COURTHOUSE	STATE PARK
ARMORY	REGIONAL PARK
CITY HALL	NATIONAL FOREST
TOWN HALL	NATIONAL AND STATE FOREST
COMMUNITY CENTER	STATE FOREST
ARENA	NATIONAL TRAIL
STADIUM	WILDLIFE REFUGE AREA
POST OFFICE	WILDLIFE MANAGEMENT AREA
POLICE STATION	HYDROLOGIC FEATURES
FIRE STATION	RIVER OR STREAM (PERMANENT)
PUBLIC LIBRARY	LAKE, POND OR RESERVOIR
PUBLIC MUSEUM	STREAM (PERMANENT)
EVENT CENTER	DRAINAGE DITCH
CITY CENTERS	WETLAND
TRIBAL GOVERNMENT CENTER	ISLAND OR LAND
CITY CENTER	REGIONAL WATERSHED
LOCALLY INCORPORATED PLACE	
UNINCORPORATED COMMUNITY	



To request information from this document in an alternative format, call 651-366-4718 or 1-800-657-3774 (Greater Minnesota); 711 or 1-800-627-3529 (Minnesota Relay). You may also send an e-mail to ADAREquest.dot@state.mn.us. (Please request at least one week in advance.)

LAST EDITED ON 1-08-2023

Population (U.S. Census 2020): 210