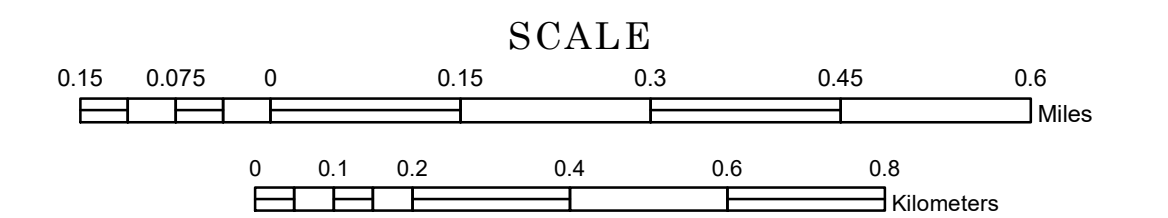


# MUNICIPALITY OF NEWPORT

PREPARED BY THE  
MINNESOTA DEPARTMENT OF TRANSPORTATION  
OFFICE OF TRANSPORTATION SYSTEM MANAGEMENT

IN COOPERATION WITH  
U.S. DEPARTMENT OF TRANSPORTATION  
FEDERAL HIGHWAY ADMINISTRATION



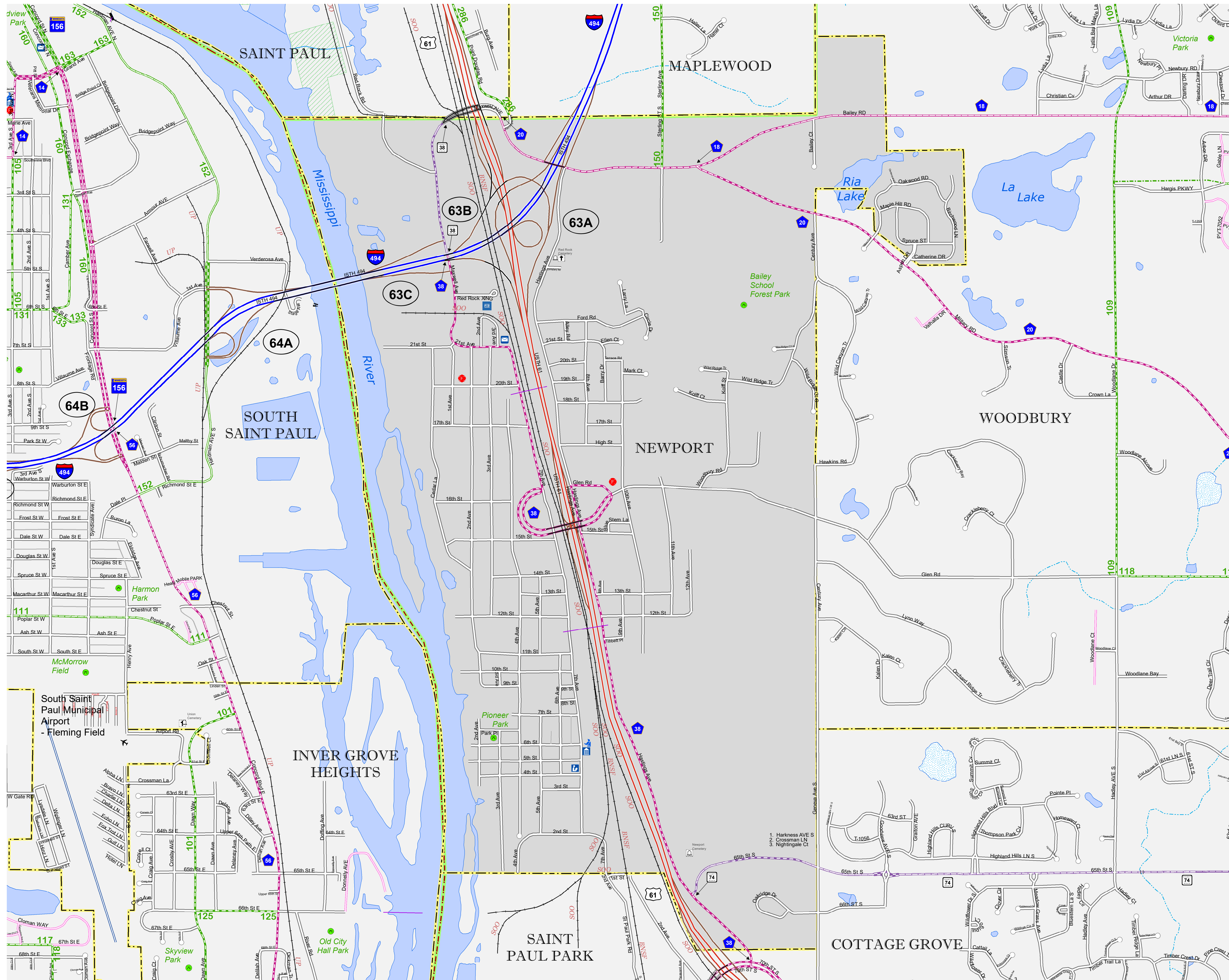
1 in = 800 ft

2022

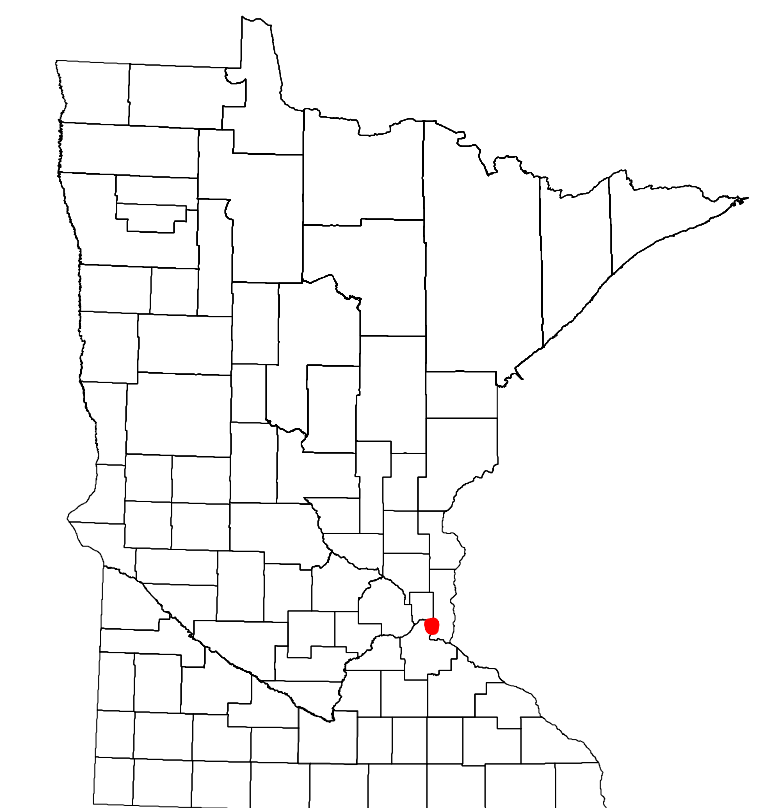
Projection:  
Transverse Mercator  
NAD 1986  
UTM Zone 15



North American Datum  
of 1986



ROAD AND ROADWAY FEATURES	PUBLIC SERVICE FEATURES
INTERSTATE	MINOT OFFICE
US HIGHWAY	MINOT TRUCK STATION
STATE AID HIGHWAY	HIGHWAY PATROL DISTRICT OFFICE
COUNTY ROAD	STATE TRAVEL INFORMATION CENTER
MUNICIPAL STREET	REST AREA (Full Service)
MUNICIPAL STATE AID STREET	REST AREA (Quick Turn)
TOWNSHIP ROAD	WAYSIDE (Only on Pk Trunk)
UNORGANIZED TERRITORY ROAD	PUBLIC ACCESS POINT
RAMP OR CONNECTOR	LOCAL PARK
INTERSTATE EXIT	FARMS/BOULDS
GREAT RIVER ROAD	PORT OF ENTRY
OTHER ROAD	PARK AND RIDE LOT
RAILROAD AND RAILWAY FEATURES	PUBLIC UNIVERSITY COLLEGE
EMPIRE BUILDER STATION (AMTRAK)	PRIVATE UNIVERSITY COLLEGE
NORTHSTAR STATION (COMASTER)	ELEMENTARY SCHOOL
LIGHT RAIL	MIDDLE SCHOOL
BLUE LINE STATION	HIGH SCHOOL
GREEN LINE STATION	AVIATION FEATURES
LONG BRIDGE (100' OR GREATER SPAN)	COMMERCIAL AIRPORT
RAILROAD BRIDGE (100' OR GREATER SPAN)	GENERAL AIRPORT
RAILROAD BRIDGE (LESSER THAN 100' SPAN)	AIRSTRIP
SKYWAY	SEAPLANE
PEDESTRIAN BRIDGE	AIRPORT RUNWAY
PEDESTRIAN TUNNEL	CULTURAL FEATURES
LOCK AND DAM	STATE HISTORICAL MARKER
STATE CAPITOL	HISTORIC DISTRICT
FEDERAL COURTHOUSE	HISTORIC SITE
COUNTY COURTHOUSE	MONUMENT
ARMORY	CEMETERY
CITY HALL	TRIBAL LAND
COMMUNITY CENTER	COUNTY
ARENA	MUNICIPALITY
STADIUM	ADJACENT MUNICIPALITY
POST OFFICE	FEDERAL ADJUSTED URBAN AREA (2014)
POLICE STATION	MILITARY
FIRE STATION	STATE PARK
PUBLIC LIBRARY	REGIONAL PARK
PUBLIC MUSEUM	NATIONAL AND STATE FOREST
EVENT CENTER	STATE FOREST
TRIAL GOVERNMENT CENTER	NATIONAL TRAIL
CITY CENTER	WILDLIFE REFUGE AREA
LOCALLY INCORPORATED PLACE	WILDLIFE MANAGEMENT AREA
UNINCORPORATED COMMUNITY	HYDROLOGIC FEATURES
	RIVER OR STREAM (PERMANENT)
	LAKE, POND OR RESERVOIR
	STREAM (INTERMITTENT)
	DRAINAGE DITCH
	WETLAND
	ISLAND OR LAND
	REGIONAL WATERSHED



To request information from this document in an alternative format, call 651-366-4718 or 1-800-657-3774 (Greater Minnesota); 711 or 1-800-627-3529 (Minnesota Relay). You may also send an e-mail to ADarequest.dot@state.mn.us. (Please request at least one week in advance.)

LAST EDITED ON 1-03-2023

Population (U.S. Census 2020): 3797