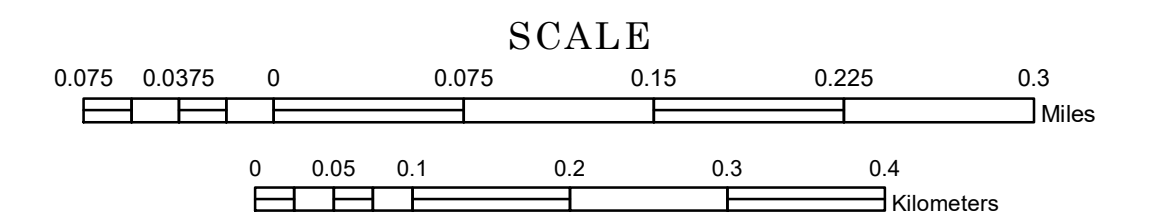


MUNICIPALITY OF LA SALLE

PREPARED BY THE
MINNESOTA DEPARTMENT OF TRANSPORTATION
OFFICE OF TRANSPORTATION SYSTEM MANAGEMENT

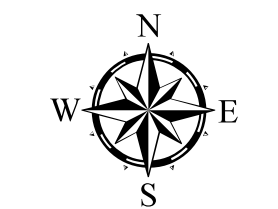
IN COOPERATION WITH
U.S. DEPARTMENT OF TRANSPORTATION
FEDERAL HIGHWAY ADMINISTRATION



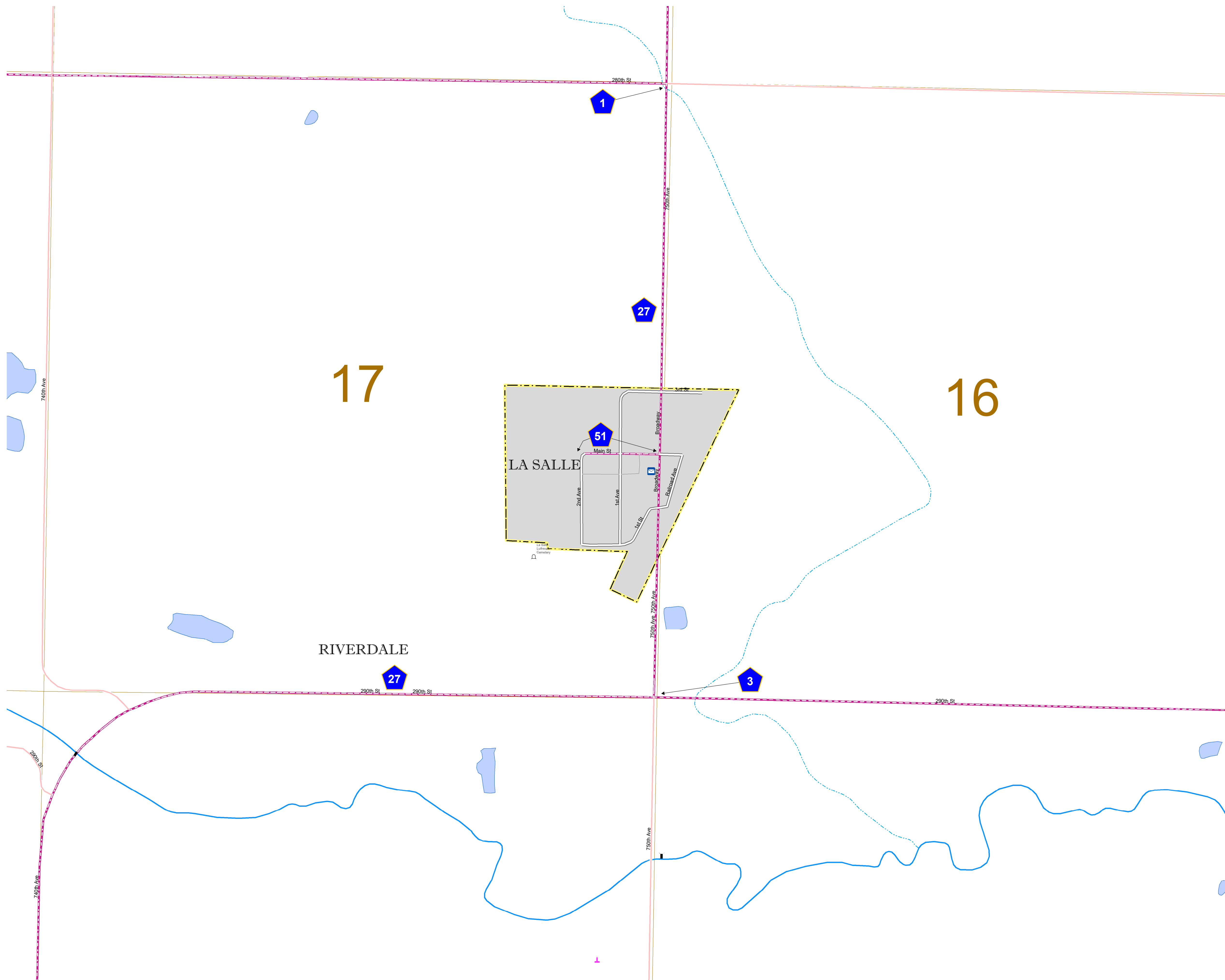
1 in = 400 ft

2023

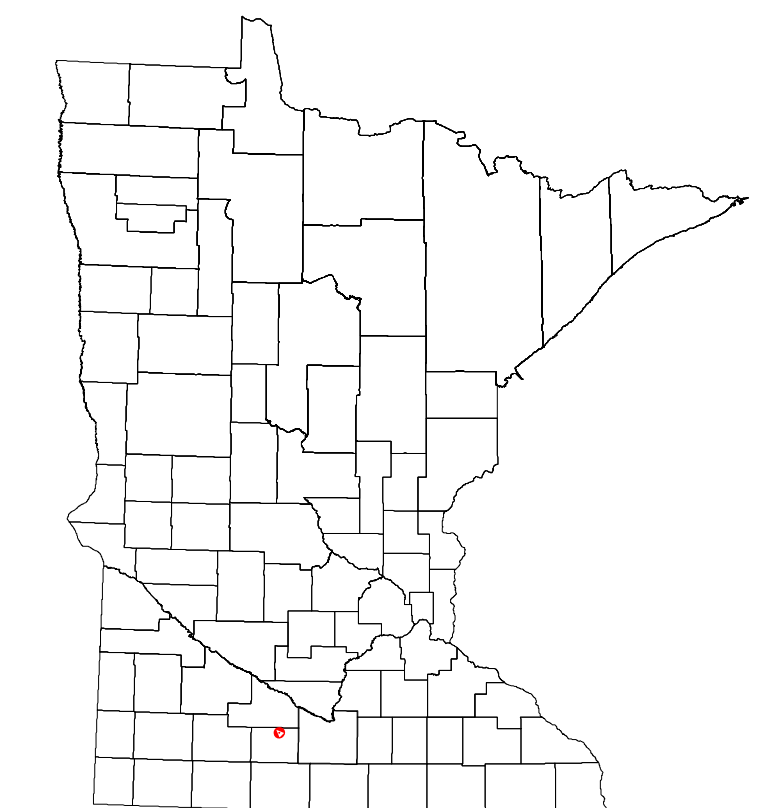
Projection:
Transverse Mercator
NAD 1986
UTM Zone 15



North American Datum
of 1986



ROAD AND ROADWAY FEATURES	PUBLIC SERVICE FEATURES
INTERSTATE	MINOT OFFICE
US HIGHWAY	MINOT TRUCK STATION
STATE HIGHWAY	HIGHWAY PATROL DISTRICT OFFICE
COUNTY STATE AID HIGHWAY	STATE TRAVEL INFORMATION CENTER
COUNTY ROAD	REST AREA (Full Service)
MUNICIPAL STREET	REST AREA (Quick Turn)
MUNICIPAL STATE AID STREET	WAYSIDE (Only on Pk Trk)
PRIVATE STREET/ROAD	PUBLIC ACCESS POINT
TOWNSHIP ROAD	LOCAL PARK
UNORGANIZED TERRITORY ROAD	FARMS/GRASSLANDS
RAMP OR CONNECTOR	PORT OF ENTRY
GREAT RIVER ROAD	PARK AND RIDE LOT
OTHER ROADS	PUBLIC UNIVERSITY/COLLEGE
FARMROAD	PRIVATE UNIVERSITY/COLLEGE
STATE PARK	ELEMENTARY SCHOOL
NATIONAL PARK	MIDDLE SCHOOL
STATE FOREST	HIGH SCHOOL
NATIONAL FOREST	
STATE GAME	
RAILROAD AND RAILWAY FEATURES	AVIATION FEATURES
RAILROAD	COMMERCIAL AIRPORT
EMPIRE BUILDER STATION (AMTRAK)	GENERAL AIRPORT
NORTHSTAR STATION (COMASTER)	AIRSTRIP
LIGHT RAIL	SEAPLANE
BLUE LINE STATION	AIRPORT RUNWAY
GREEN LINE STATION	
INFRASTRUCTURE FEATURES	CULTURAL FEATURES
LONG BRIDGE (100' OR GREATER SPAN)	STATE HISTORIC MARKER
MAJOR BRIDGE (20' TO 100' SPAN)	HISTORIC DISTRICT
MINOR BRIDGE (2' TO 20' SPAN)	HISTORIC SITE
ROAD TUNNEL (100' OR GREATER SPAN)	MONUMENT
RAILROAD BRIDGE (100' OR GREATER SPAN)	CEMETERY
RAILROAD BRIDGE (LESSER 100' SPAN)	
SKYWAY	
PEDESTRIAN BRIDGE	TRIBAL LAND
PEDESTRIAN TUNNEL	COUNTY
DAM	MUNICIPALITY
LOCK AND DAM	ADJACENT MUNICIPALITY
	FEDERAL ADJUSTED URBAN AREA (2014)
PUBLIC FACILITIES	
STATE CAPITOL	MILITARY
FEDERAL COURTHOUSE	STATE PARK
COUNTY COURTHOUSE	REGIONAL PARK
ARMORY	NATIONAL FOREST
CITY HALL	NATIONAL AND STATE FOREST
TOWN HALL	STATE FOREST
COMMUNITY CENTER	NATIONAL TRAIL
ARENA	WILDLIFE REFUGE AREA
STADIUM	WILDLIFE MANAGEMENT AREA
POST OFFICE	
POLICE STATION	
FIRE STATION	HYDROLOGIC FEATURES
PUBLIC LIBRARY	RIVER OR STREAM (PERENNIAL)
PUBLIC MUSEUM	LAKE, POND OR RESERVOIR
EVENT CENTER	STREAM (INTERMITTENT)
	DRAINAGE DITCH
CITY CENTERS	
TRIBAL GOVERNMENT CENTER	WETLAND
CITY CENTER	ISLAND OR LAND
LOCALLY INCORPORATED PLACE	REGIONAL WATERSHED
UNINCORPORATED COMMUNITY	



To request information from this document in an alternative format, call 651-366-4718 or 1-800-657-3774 (Greater Minnesota); 711 or 1-800-627-3529 (Minnesota Relay). You may also send an e-mail to ADarequest.dot@state.mn.us. (Please request at least one week in advance.)

LAST EDITED ON 12-10-2023

Population (U.S. Census 2020): 79