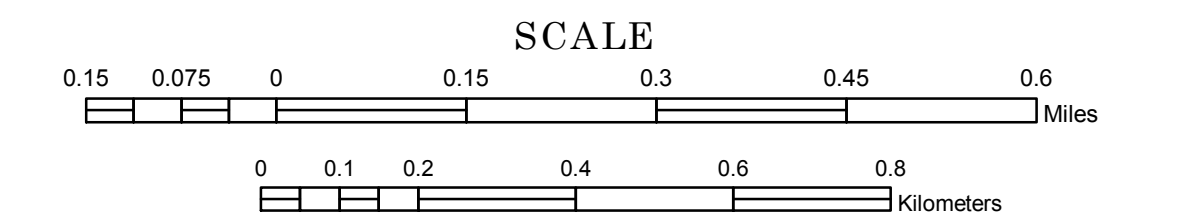


MUNICIPALITY OF BROWNSVILLE

PREPARED BY THE
MINNESOTA DEPARTMENT OF TRANSPORTATION
OFFICE OF TRANSPORTATION SYSTEM MANAGEMENT

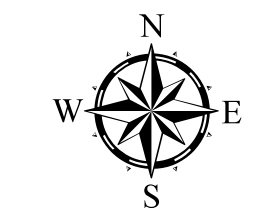
IN COOPERATION WITH
U.S. DEPARTMENT OF TRANSPORTATION
FEDERAL HIGHWAY ADMINISTRATION



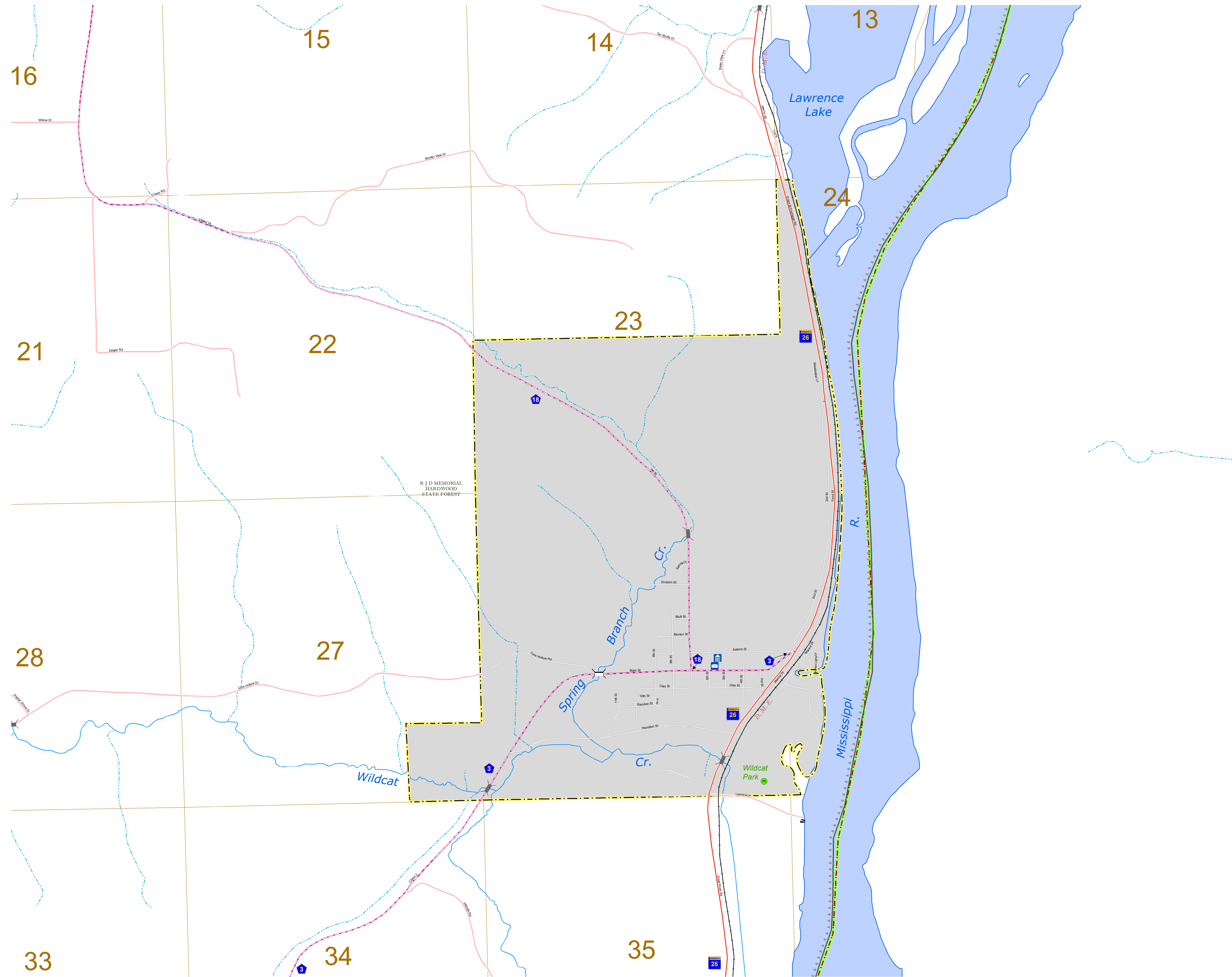
1 in = 800 ft

2017

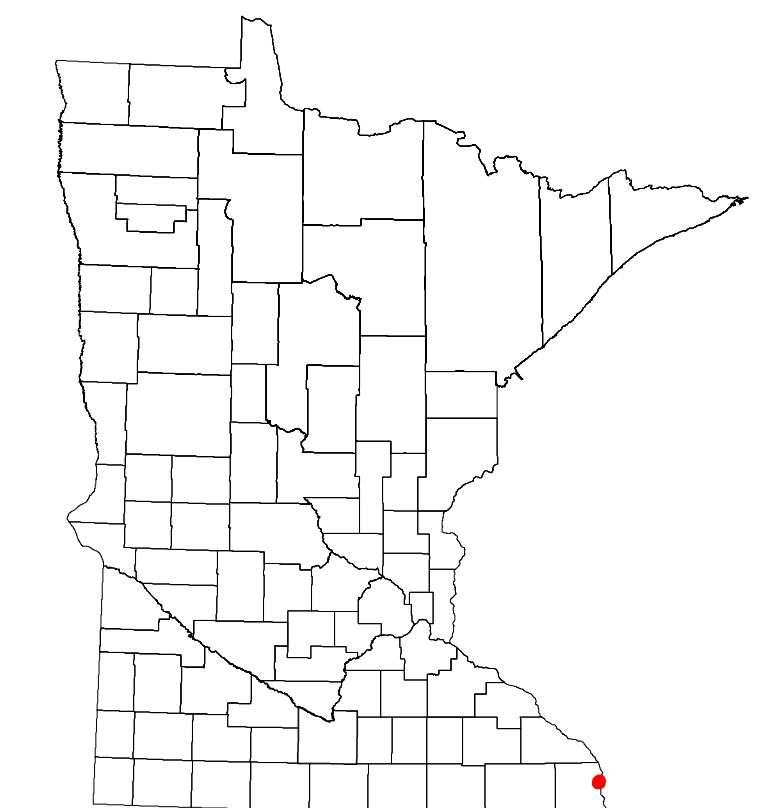
Projection:
Transverse Mercator
NAD 1986
UTM Zone 15



North American Datum
of 1986



ROAD AND ROADWAY FEATURES		PUBLIC SERVICE FEATURES	
INTERSTATE		MINDOT OFFICE	
US HIGHWAY		MINDOT TRUCK STATION	
MN HIGHWAY		HIGHWAY PATROL DISTRICT OFFICE	
COUNTY STATE AID HIGHWAY		STATE TRAVEL INFORMATION CENTER	
COUNTY ROAD		REST AREA (Full Service)	
MUNICIPAL STATE AID STREET		REST AREA (Vault Toilet)	
MUNICIPAL STREET		WAYSIDE (Vault or Pit Toilet)	
PRIVATE STREET/ROAD		LOCAL PARK	
TOWNSHIP ROAD		PUBLIC ACCESS POINT	
UNORGANIZED TERRITORY ROAD		FAIRGROUNDS	
RAMP OR CONNECTOR		PORT OF ENTRY	
INTERSTATE EXIT		PARK AND RIDE LOT	
GREAT RIVER ROAD		MN STATE COLLEGE AND UNIVERSITY SYSTEM (MNSCU)	
OTHER ROADS		UNIVERSITY OF MN SYSTEM	
Farmhouse		CULTURAL FEATURES	
Shore Park		STATE HISTORICAL MARKER	
Home Service		HISTORIC DISTRICT	
Military		HISTORIC SITE	
AVIATION FEATURES		MONUMENT	
COMMERCIAL AIRPORT		BOUNDARY FEATURES	
GENERAL AIRPORT		TRIBAL LAND	
AIRSTRIP		COUNTY	
SEAPLANE		MUNICIPALITY	
AIRPORT RUNWAY		ADJACENT MUNICIPALITY	
RAILROAD AND RAILWAY FEATURES		FEDERAL ADJUSTED URBAN AREA (2014)	
RAILWAY		MILITARY	
EMPIRE BUILDER STATION (Arctic)		VOYAGEURS NATIONAL PARK	
NORTHSTAR STATION (Columbian)		BOUNDARY WATERS CANOE AREA WILDERNESS	
LIGHT RAIL		STATE PARK	
BLUE LINE		REGIONAL PARK	
GREEN LINE		NATIONAL FOREST	
INFRASTRUCTURE FEATURES		NATIONAL AND STATE FOREST	
LONG BRIDGE (300' or Greater Span)		STATE FOREST	
MAJOR BRIDGE (22' to 300' Span)		NATIONAL TRAIL	
MINOR BRIDGE (5' to 20' Span)		WILDLIFE REFUGE AREA	
DAM		WILDLIFE MANAGEMENT AREA	
LOCK AND DAM		HYDROLOGIC FEATURES	
PUBLIC FACILITIES		RIVER OR STREAM (Perennial)	
STATE CAPITOL		LAKE, POND OR RESERVOIR	
FEDERAL COURTHOUSE		STREAM (Intermittent)	
COUNTY COURTHOUSE		DRAINAGE DITCH	
ARMORY		CITY CENTERS	
CITY CENTERS		TRIBAL GOVERNMENT CENTER	
CITY CENTER		LOCALLY KNOWN PLACE	
UNINCORPORATED COMMUNITY		REGIONAL WATERSHED	



Population (U.S. Census 2010): 466

To request information from this document in an alternative format, call 651-366-4718 or 1-800-657-3774 (Greater Minnesota); 711 or 1-800-627-3529 (Minnesota Relay). You may also send an e-mail to ADArequest.dot@state.mn.us. (Please request at least one week in advance.)