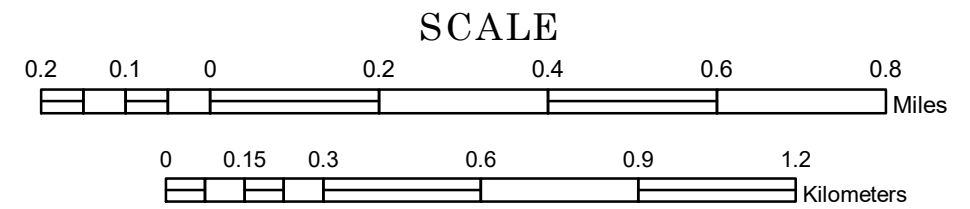


MUNICIPALITY OF LA CRESCENT

PREPARED BY THE
MINNESOTA DEPARTMENT OF TRANSPORTATION
OFFICE OF TRANSPORTATION SYSTEM MANAGEMENT

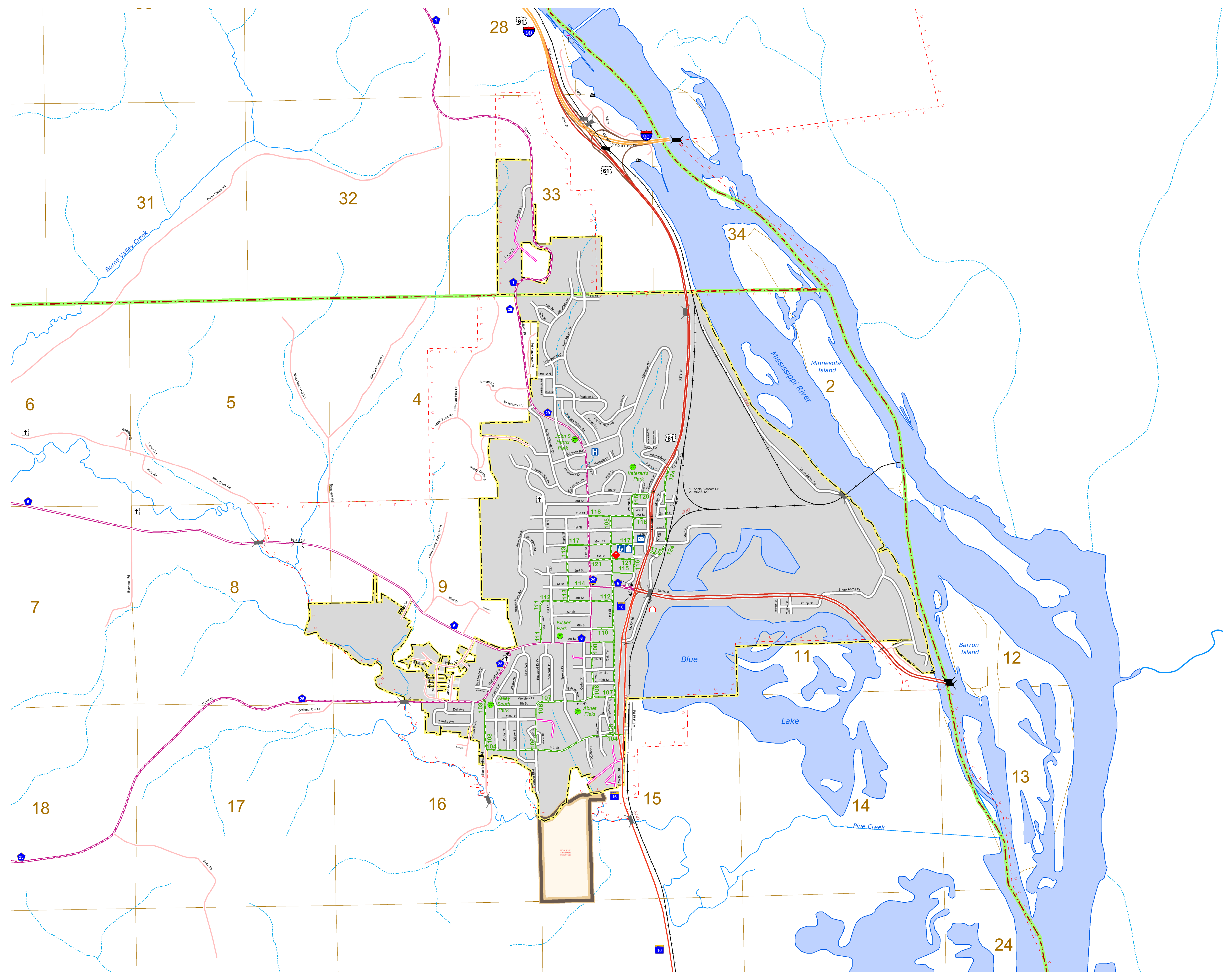
IN COOPERATION WITH
U.S. DEPARTMENT OF TRANSPORTATION
FEDERAL HIGHWAY ADMINISTRATION



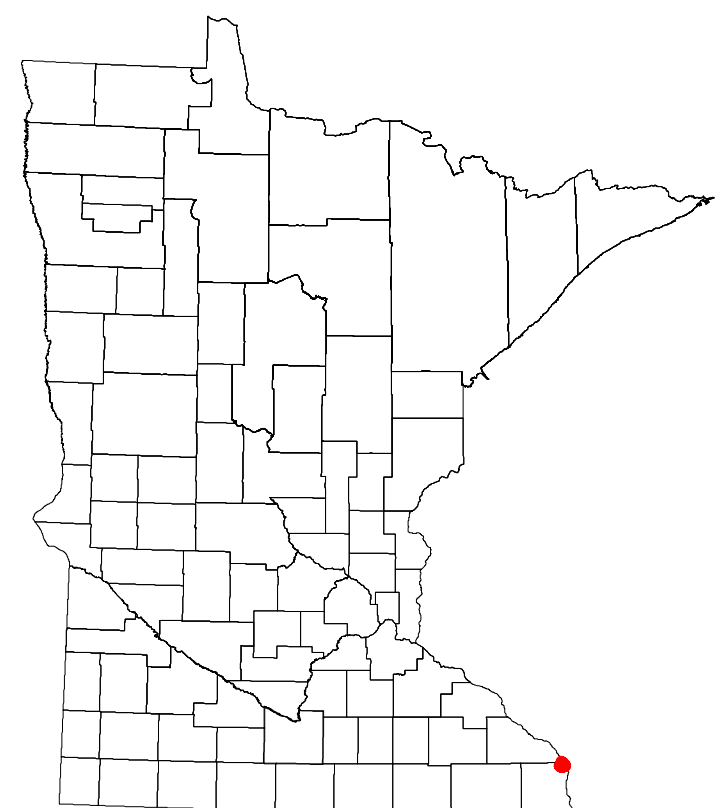
2018

Projection:
Transverse Mercator
NAD 1986
UTM Zone 15

North American Datum
of 1986



ROAD AND ROADWAY FEATURES		PUBLIC SERVICE FEATURES	
INTERSTATE		MINOT OFFICE	
US HIGHWAY		MINOT TRUCK STATION	
MN HIGHWAY		HIGHWAY PATROL DISTRICT OFFICE	
COUNTY STATE AID HIGHWAY		STATE TRAVEL INFORMATION CENTER	
COUNTY ROAD		REST AREA (Full Service)	
MUNICIPAL STATE AID STREET		REST AREA (Walk Toilet)	
MUNICIPAL STREET		WAYSIDE (Walk or Pk Toilet)	
PRIVATE STREET/ROAD		LOCAL PARK	
TOWNSHIP ROAD		PUBLIC ACCESS POINT	
UNORGANIZED TERRITORY ROAD		FAIRGROUNDS	
RAMP OR CONNECTOR		PORT OF ENTRY	
INTERSTATE EXIT		PARK AND RIDE LOT	
GREAT RIVER ROAD		MN STATE COLLEGE AND UNIVERSITY SYSTEM (MNSCU)	
OTHER ROADS		UNIVERSITY OF MN SYSTEM	
FRONTAGE		STATE PARK	
INDIAN SERVICE		NATIONAL PARK	
MILITARY		NATIONAL FOREST	
COMMERCIAL AIRPORT		NATIONAL MONUMENT	
GENERAL AIRPORT		STATE FOREST	
AIRSTRIIP		NATIONAL WILDLIFE REFUGE	
SEAPLANE		STATE HISTORICAL MARKER	
AIRPORT RUNWAY		CULTURAL FEATURES	
RAILROAD AND RAILWAY FEATURES		HISTORIC DISTRICT	
EMPIRE BUILDER STATION (AMTRAK)		HISTORIC SITE	
NORTHESTAR STATION (COMCAST)		MONUMENT	
LIGHT RAIL		BOUNDARY FEATURES	
BLUE LINE		TRIBAL LAND	
GREEN LINE		COUNTY	
LONG BRIDGE (300' OR GREATER SPAN)		MUNICIPALITY	
MAJOR BRIDGE (20' TO 300' SPAN)		ADJACENT MUNICIPALITY	
MINOR BRIDGE (5' TO 20' SPAN)		FEDERAL ADJUSTED URBAN AREA (2014)	
DAM		MILITARY	
LOCK AND DAM		VOYAGERS NATIONAL PARK	
STATE CAPITOL		BOUNDARY WATERS CANOE AREA WILDERNESS	
FEDERAL COURTHOUSE		STATE PARK	
COUNTY COURTHOUSE		REGIONAL PARK	
ARMORY		NATIONAL FOREST	
CITY CENTERS		NATIONAL AND STATE FOREST	
TRIBAL GOVERNMENT CENTER		STATE FOREST	
CITY CENTER		NATIONAL TRAIL	
LOCALLY KNOWN PLACE		WILDLIFE REFUGES AREA	
UNINCORPORATED COMMUNITY		WILDLIFE MANAGEMENT AREA	
		HYDROLOGIC FEATURES	
		RIVER OR STREAM (PERMANENT)	
		LAKE, POND OR RESERVOIR	
		STREAM (INTERMITTENT)	
		DRAINAGE DITCH	
		WETLAND	
		ISLAND OR LAND	
		REGIONAL WATERSHED	



Population (U.S. Census 2010): 4830

To request information from this document in an alternative format, call 651-366-4718 or 1-800-657-3774 (Greater Minnesota); 711 or 1-800-627-3529 (Minnesota Relay). You may also send an e-mail to ADARrequest.dot@state.mn.us. (Please request at least one week in advance.)