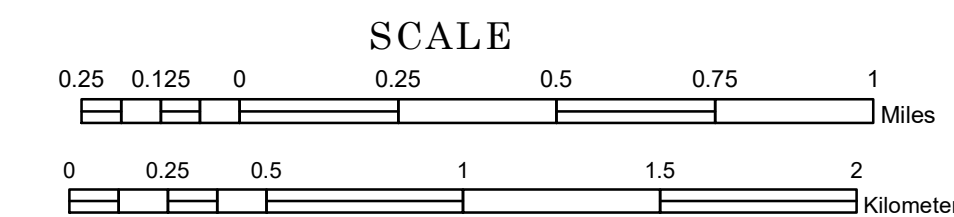


# TOWNSHIP OF KIMBERLY

PREPARED BY THE  
MINNESOTA DEPARTMENT OF TRANSPORTATION  
OFFICE OF TRANSPORTATION SYSTEM MANAGEMENT

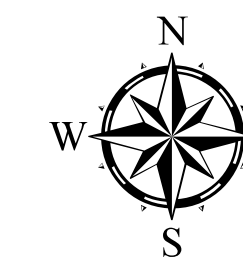
IN COOPERATION WITH  
U.S. DEPARTMENT OF TRANSPORTATION  
FEDERAL HIGHWAY ADMINISTRATION



1 in = 1,600 ft

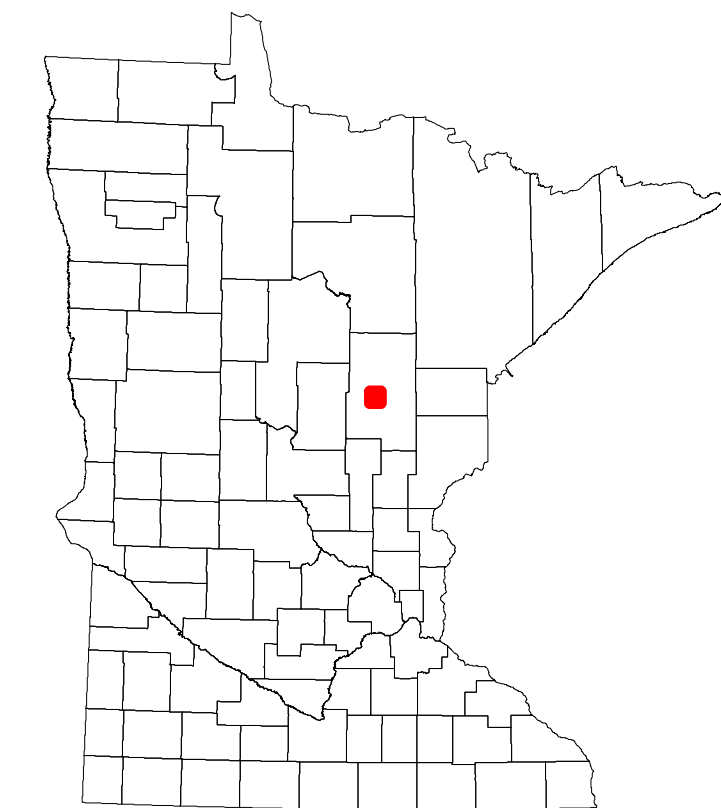
2022

Projection:  
Transverse Mercator  
NAD 1986  
UTM Zone 15

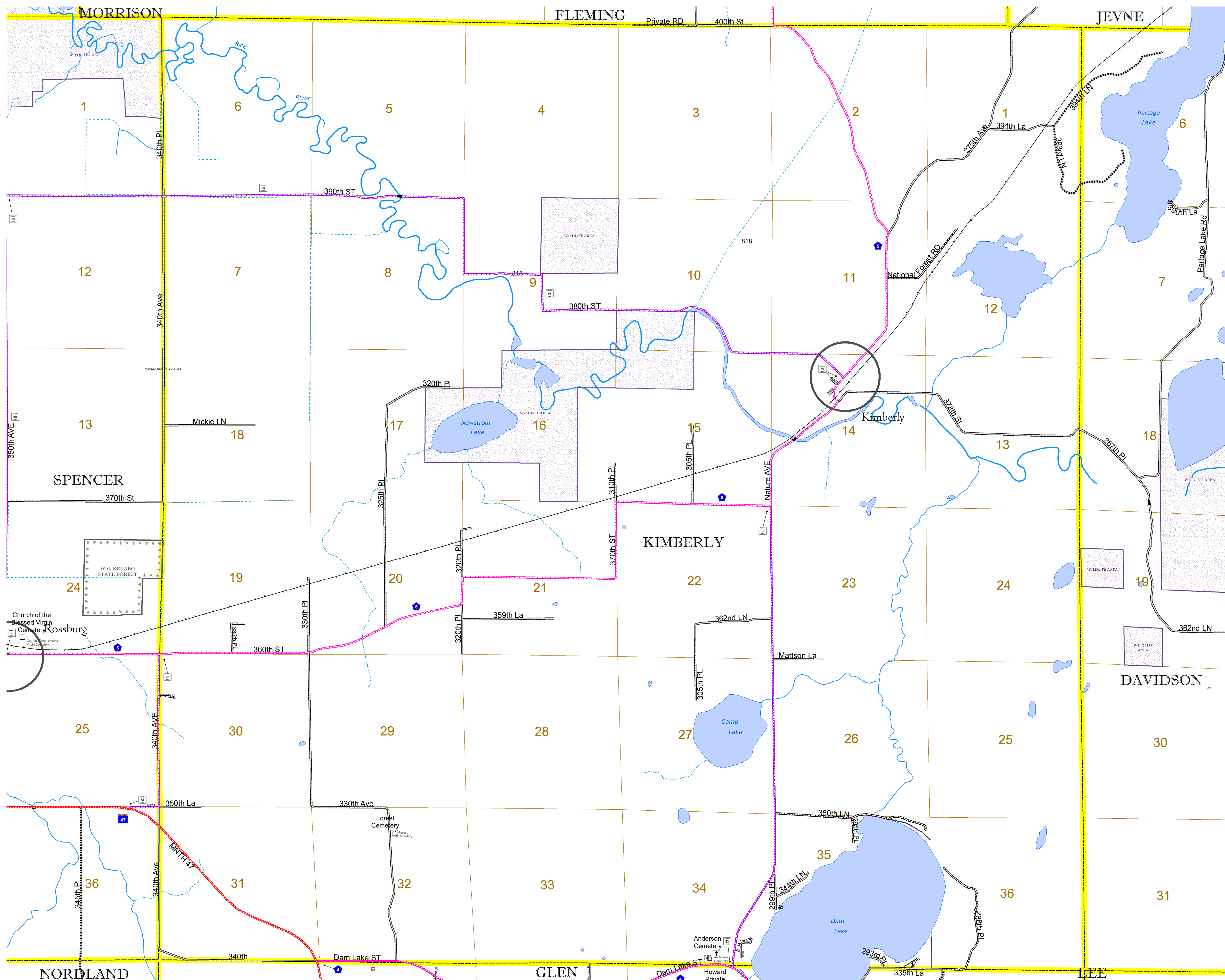


North American Datum  
of 1986

ROAD AND ROADWAY FEATURES		BOUNDARY FEATURES	
INTERSTATE	CONCRETE	TRIBAL LAND	STATE OF MINNESOTA
US HIGHWAY	BITUMINOUS	COUNTY	MUNICIPALITY
MN HIGHWAY	GRAVEL	UNORGANIZED TERRITORY	CIVIL TOWNSHIP
COUNTY STATE AID HIGHWAY	DIRT/UNIMPROVED	FEDERAL ADJUSTED URBAN AREA (2014)	CONGRESSIONAL TOWNSHIP
COUNTY ROAD	OTHER	CITY TOWNSHIP	SECTION
TOWNSHIP ROAD	UNKNOWN	MILITARY	VOYAGEURS NATIONAL PARK
UNORGANIZED TERRITORY ROAD		AVIATION FEATURES	BOUNDARY WATERS CANOE AREA WILDERNESS
OTHER ROADS		COMMERCIAL AIRPORT	STATE PARK
Municipal	RAMP OR CONNECTOR	GENERAL AIRPORT	REGIONAL PARK
Private	INTERSTATE EXIT	AIRSTRIP	NATIONAL FOREST
National Monument	GREAT RIVER ROAD	SEAPLANE	NATIONAL AND STATE FOREST
National Wildlife	AVIATION FEATURES	AIRPORT RUNWAY	STATE FOREST
State Game	COMMERCIAL AIRPORT		WILDLIFE REFUGUE AREA
State Park	GENERAL AIRPORT		WILDLIFE MANAGEMENT AREA
Preserve	AIRSTRIP		HYDROLOGIC FEATURES
	SEAPLANE		RIVER OR STREAM (PERMANENT)
	AIRPORT RUNWAY		LAKE, POND OR RESERVOIR
			STREAM (INTERMITTENT)
			DRAINAGE DITCH
			WETLAND
			ISLAND OR LAND
			REGIONAL WATERSHED



Population (U.S. Census 2010): 195



To request information from this document in an alternative format, call 651-366-4718 or 1-800-657-3774 (Greater Minnesota); 711 or 1-800-627-3529 (Minnesota Relay). You may also send an e-mail to ADArequest.dot@state.mn.us. (Please request at least one week in advance.)