

LONGLOST LAKE

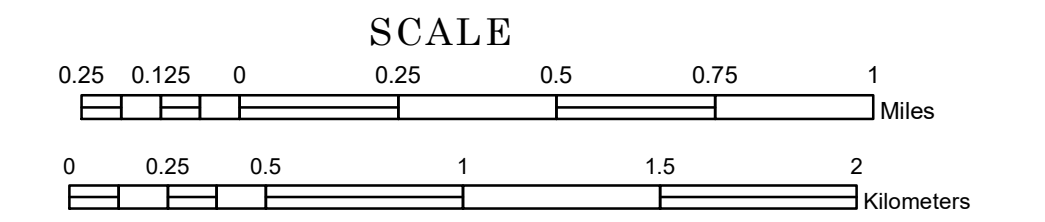
SOUTH CLEARWATER

LAKE ALICE

TOWNSHIP OF SAVANNAH

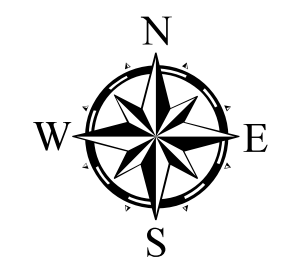
PREPARED BY THE
MINNESOTA DEPARTMENT OF TRANSPORTATION
OFFICE OF TRANSPORTATION SYSTEM MANAGEMENT

IN COOPERATION WITH
U.S. DEPARTMENT OF TRANSPORTATION
FEDERAL HIGHWAY ADMINISTRATION



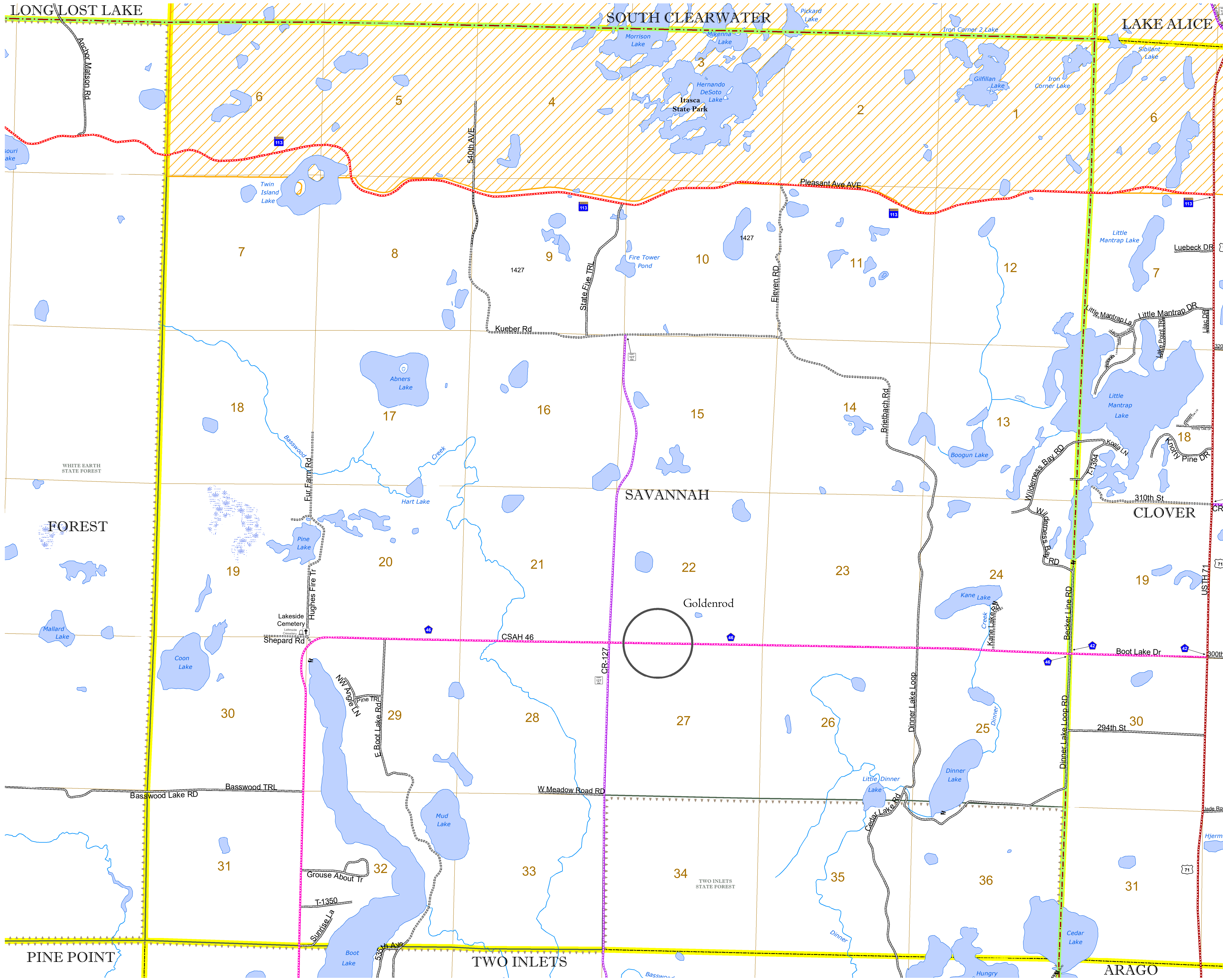
1 in = 1,600 ft

2022

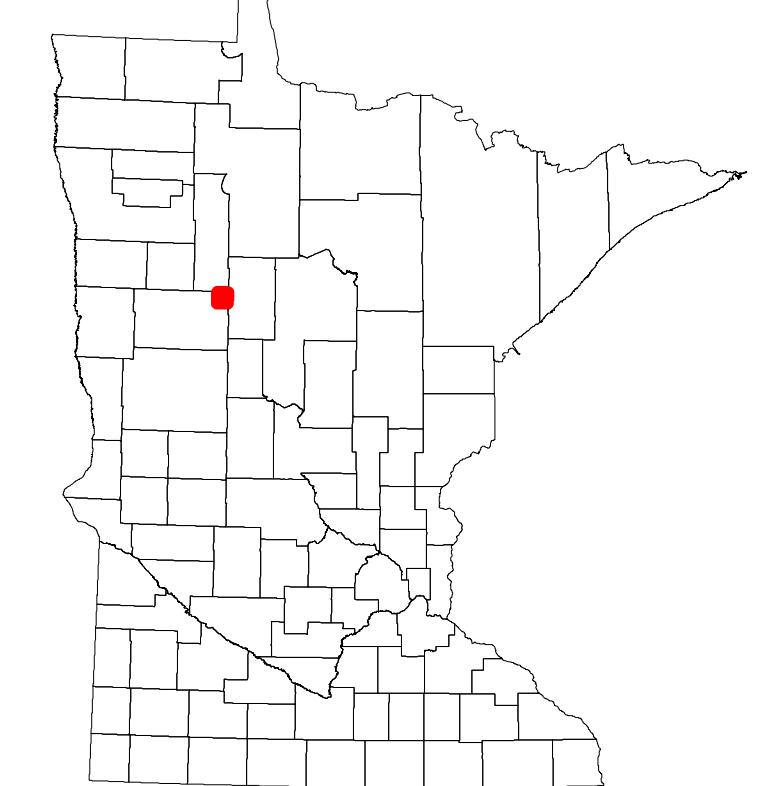


Projection:
Transverse Mercator
NAD 1986
UTM Zone 15

North American Datum
of 1986



ROAD AND ROADWAY FEATURES		AVIATION FEATURES	
INTERSTATE	CONCRETE	COMMERCIAL AIRPORT	GENERAL AIRPORT
US HIGHWAY	BITUMINOUS	AIRSTRIP	SEAPLANE
MN HIGHWAY	GRAVEL	AIRPORT RUNWAY	BOUNDARY FEATURES
COUNTY STATE AID HIGHWAY	DIRT/UNIMPROVED	TRIAL LAND	TRIBAL LAND
COUNTY ROAD	OTHER	STATE OF MINNESOTA	COUNTY
TOWNSHIP ROAD	UNKNOWN	MUNICIPALITY	MUNICIPALITY
UNORGANIZED TERRITORY ROAD		UNORGANIZED TERRITORY	FEDERAL ADJUSTED URBAN AREA (2014)
OTHER ROADS		CIVIL TOWNSHIP	CIVIL TOWNSHIP
Municipal	RAMP OR CONNECTOR	CONGRESSIONAL TOWNSHIP	SECTION
Private	INTERSTATE EXIT	MILITARY	MILITARY
National Service	GREAT RIVER ROAD	VOYAGEURS NATIONAL PARK	VOYAGEURS NATIONAL PARK
Muslim		BOUNDARY WATERS CANOE AREA WILDERNESS	BOUNDARY WATERS CANOE AREA WILDERNESS
		STATE PARK	STATE PARK
		NATIONAL FOREST	NATIONAL FOREST
		NATIONAL AND STATE FOREST	NATIONAL AND STATE FOREST
		STATE FOREST	STATE FOREST
		WILDLIFE REFUGUE AREA	WILDLIFE REFUGUE AREA
		WILDLIFE MANAGEMENT AREA	WILDLIFE MANAGEMENT AREA
		HYDROLOGIC FEATURES	HYDROLOGIC FEATURES
		RIVER OR STREAM (PERMANENT)	RIVER OR STREAM (PERMANENT)
		LAKE, POND OR RESERVOIR	LAKE, POND OR RESERVOIR
		STREAM (INTERMITTENT)	STREAM (INTERMITTENT)
		DRAINAGE DITCH	DRAINAGE DITCH
		WETLAND	WETLAND
		ISLAND OR LAND	ISLAND OR LAND
		REGIONAL WATERSHED	REGIONAL WATERSHED



Population (U.S. Census 2010): 163

To request information from this document in an alternative format, call 651-366-4718 or 1-800-657-3774 (Greater Minnesota); 711 or 1-800-627-3529 (Minnesota Relay). You may also send an e-mail to ADRequest.dot@state.mn.us. (Please request at least one week in advance.)