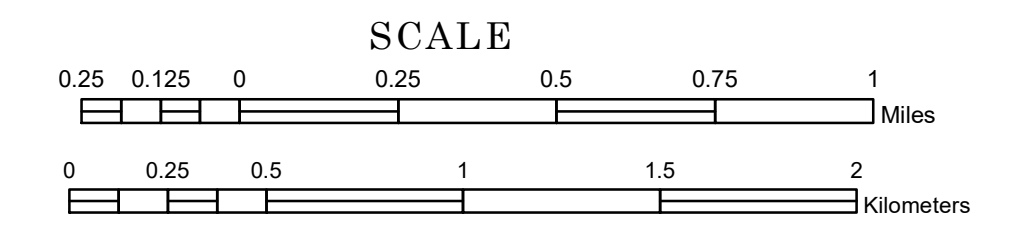


TOWNSHIP OF ALMOND

PREPARED BY THE
MINNESOTA DEPARTMENT OF TRANSPORTATION
OFFICE OF TRANSPORTATION SYSTEM MANAGEMENT

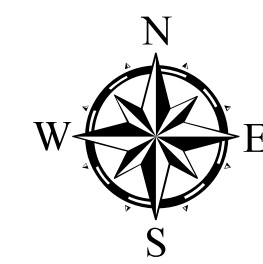
IN COOPERATION WITH
U.S. DEPARTMENT OF TRANSPORTATION
FEDERAL HIGHWAY ADMINISTRATION



1 in = 1,600 ft

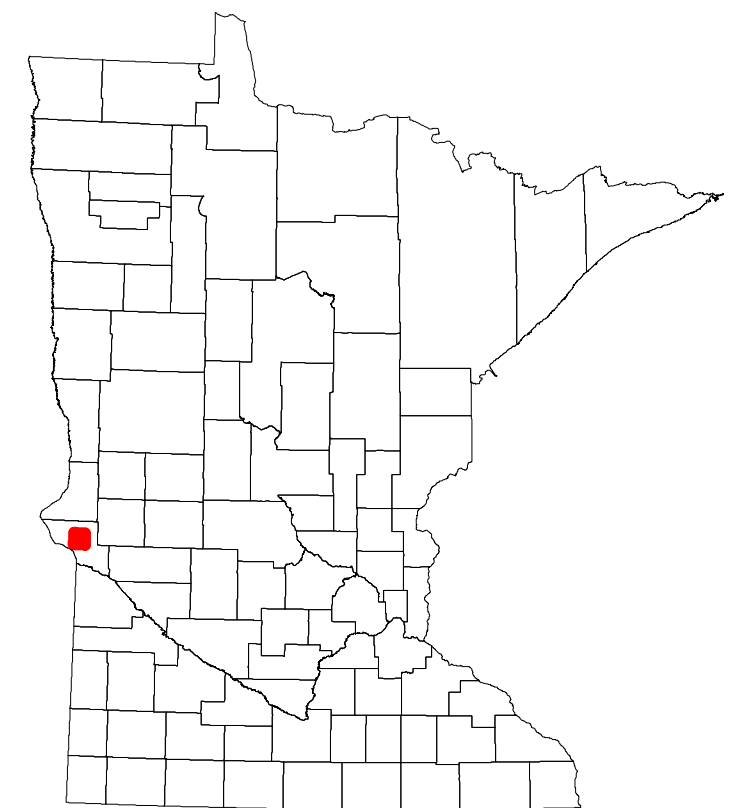
2022

Projection:
Transverse Mercator
NAD 1986
UTM Zone 15

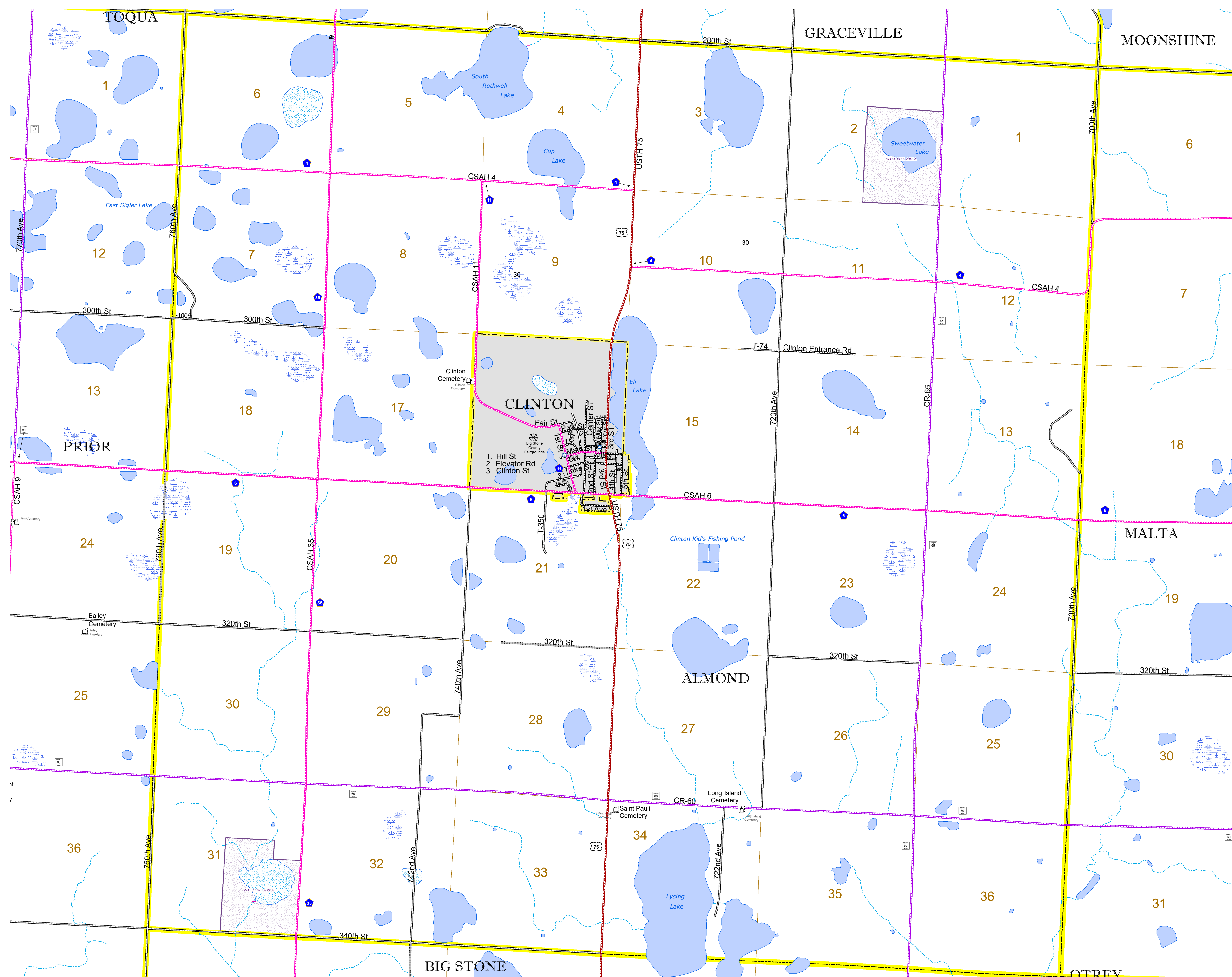


North American Datum
of 1986

ROAD AND ROADWAY FEATURES		BOUNDARY FEATURES	
INTERSTATE	CONCRETE	STATE OF MINNESOTA	STATE OF MINNESOTA
US HIGHWAY	BITUMINOUS	COUNTY	COUNTY
MN HIGHWAY	GRAVEL	MUNICIPALITY	MUNICIPALITY
COUNTY STATE AID HIGHWAY	DIRT/UNIMPROVED	UNORGANIZED TERRITORY	UNORGANIZED TERRITORY
COUNTY ROAD	OTHER	FEDERAL ADJUSTED URBAN AREA (2014)	FEDERAL ADJUSTED URBAN AREA (2014)
TOWNSHIP ROAD	UNKNOWN	CIVIL TOWNSHIP	CIVIL TOWNSHIP
UNORGANIZED TERRITORY ROAD		CONGRESSIONAL TOWNSHIP	CONGRESSIONAL TOWNSHIP
OTHER ROADS		SECTION	SECTION
Municipal	RAMP OR CONNECTOR	MILITARY	MILITARY
Private	INTERSTATE EXIT	VOYAGEURS NATIONAL PARK	VOYAGEURS NATIONAL PARK
National Monument		BOUNDARY WATERS CANOE AREA WILDERNESS	BOUNDARY WATERS CANOE AREA WILDERNESS
National Park		STATE PARK	STATE PARK
National Wildlife Refuge		REGIONAL PARK	REGIONAL PARK
State Park		NATIONAL FOREST	NATIONAL FOREST
Preserve		NATIONAL AND STATE FOREST	NATIONAL AND STATE FOREST
		STATE FOREST	STATE FOREST
		WILDLIFE REFUGE AREA	WILDLIFE REFUGE AREA
		WILDLIFE MANAGEMENT AREA	WILDLIFE MANAGEMENT AREA
		HYDROLOGIC FEATURES	HYDROLOGIC FEATURES
		RIVER OR STREAM (PERENNIAL)	RIVER OR STREAM (PERENNIAL)
		LAKE, POND OR RESERVOIR	LAKE, POND OR RESERVOIR
		STREAM (INTERMITTENT)	STREAM (INTERMITTENT)
		DRAINAGE DITCH	DRAINAGE DITCH
		WETLAND	WETLAND
		ISLAND OR LAND	ISLAND OR LAND
		REGIONAL WATERSHED	REGIONAL WATERSHED



Population (U.S. Census 2010): 110



To request information from this document in an alternative format, call 651-366-4718 or 1-800-657-3774 (Greater Minnesota); 711 or 1-800-627-3529 (Minnesota Relay). You may also send an e-mail to ADRequest.dot@state.mn.us. (Please request at least one week in advance.)