

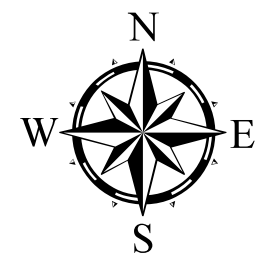
TOWNSHIP OF TOQUA

PREPARED BY THE
MINNESOTA DEPARTMENT OF TRANSPORTATION
OFFICE OF TRANSPORTATION SYSTEM MANAGEMENT

IN COOPERATION WITH
U.S. DEPARTMENT OF TRANSPORTATION
FEDERAL HIGHWAY ADMINISTRATION

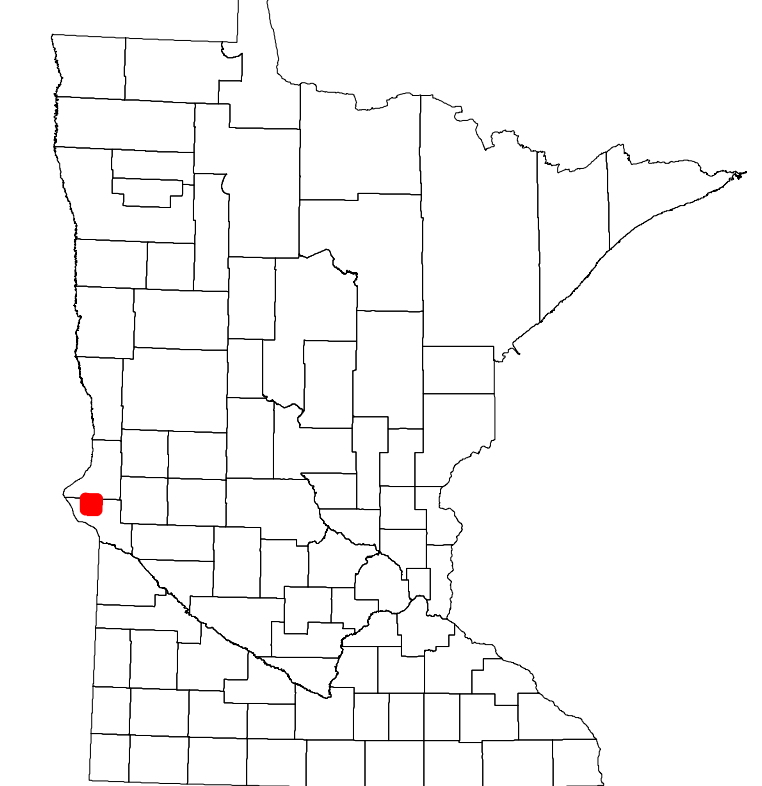


Projection:
Transverse Mercator
NAD 1986
UTM Zone 15

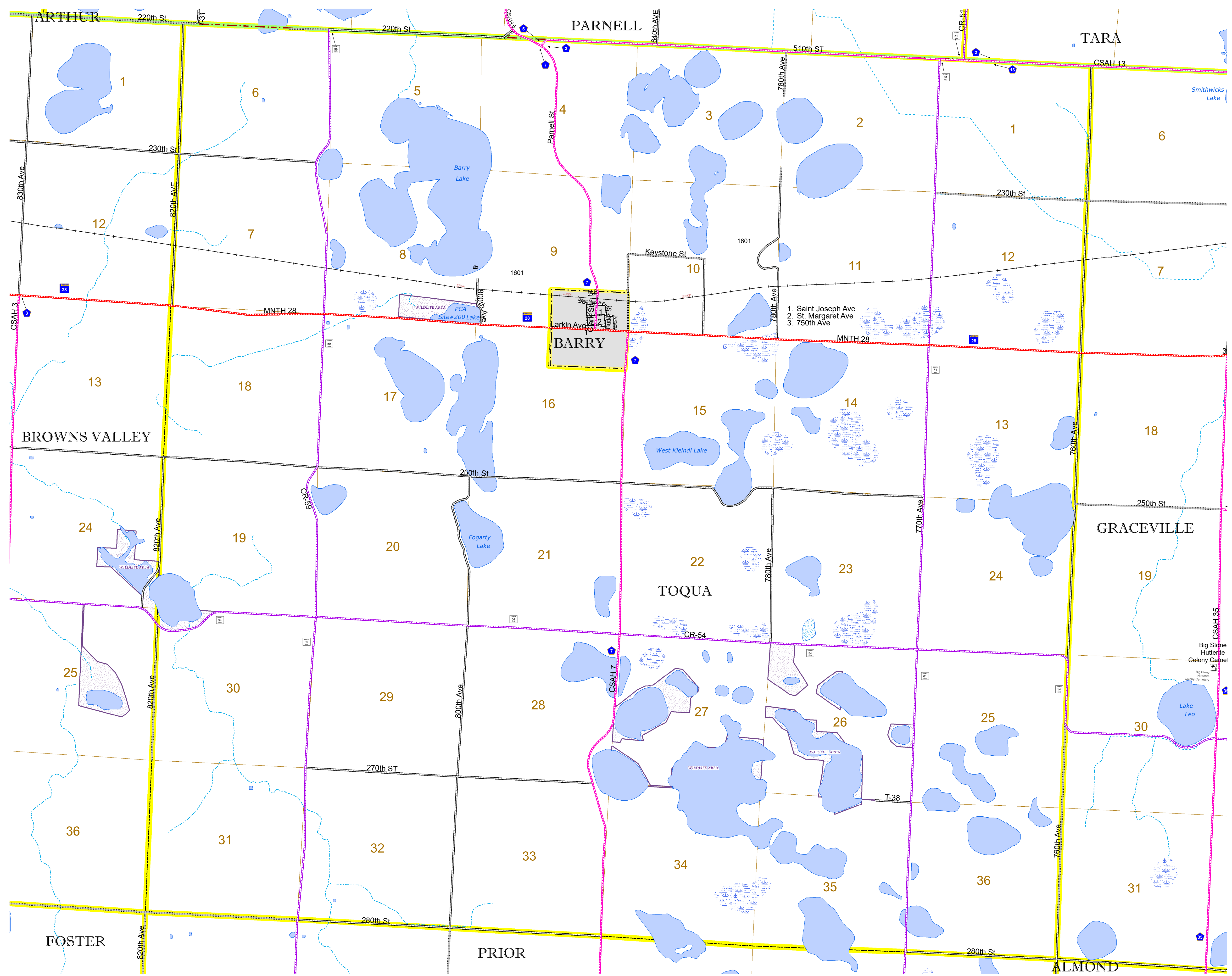


North American Datum
of 1986

ROAD AND ROADWAY FEATURES		AVIATION FEATURES	
INTERSTATE	CONCRETE	COMMERCIAL AIRPORT	GENERAL AIRPORT
US HIGHWAY	BITUMINOUS	AIRSTRIP	SEAPLANE
MN HIGHWAY	GRAVEL	AIRPORT RUNWAY	BOUNDARY FEATURES
COUNTY STATE AID HIGHWAY	DIRT/UNIMPROVED	TRIBAL LAND	STATE OF MINNESOTA
COUNTY ROAD	OTHER	COUNTY	MUNICIPALITY
TOWNSHIP ROAD	UNKNOWN	UNINCORPORATED TERRITORY	FEDERAL ADJUSTED URBAN AREA (2014)
UNORGANIZED TERRITORY ROAD		CIVIL TOWNSHIP	CONGRESSIONAL TOWNSHIP
OTHER ROADS		SECTION	MILITARY
Municipal	RAMP OR CONNECTOR	VOYAGEURS NATIONAL PARK	BOUNDARY WATERS CANOE AREA WILDERNESS
Private	INTERSTATE EXIT	REGIONAL PARK	STATE PARK
National Monument		NATIONAL FOREST	NATIONAL AND STATE FOREST
National Park		STATE FOREST	WILDLIFE REFUGUE AREA
National Wildlife		WILDLIFE MANAGEMENT AREA	HYDROLOGIC FEATURES
State Park		WILDLIFE MANAGEMENT AREA	RIVER OR STREAM (PERENNIAL)
Preserve		WILDLIFE MANAGEMENT AREA	LAKE, POND OR RESERVOIR
		WILDLIFE MANAGEMENT AREA	STREAM (INTERMITTENT)
		WILDLIFE MANAGEMENT AREA	DRAINAGE DITCH
		WILDLIFE MANAGEMENT AREA	WETLAND
		WILDLIFE MANAGEMENT AREA	ISLAND OR LAND
		WILDLIFE MANAGEMENT AREA	REGIONAL WATERSHED



Population (U.S. Census 2010): 53



To request information from this document in an alternative format, call 651-366-4718 or 1-800-657-3774 (Greater Minnesota); 711 or 1-800-627-3529 (Minnesota Relay). You may also send an e-mail to ADARquest.dot@state.mn.us. (Please request at least one week in advance.)