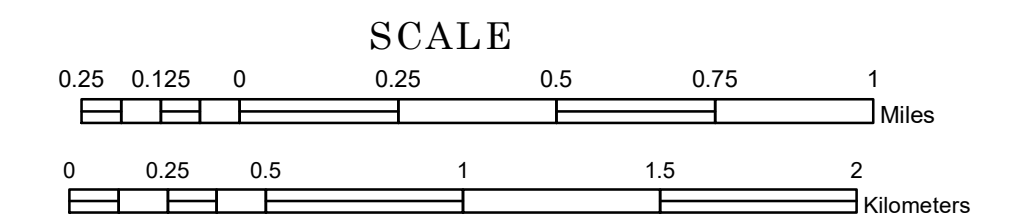


TOWNSHIP OF HANCOCK

PREPARED BY THE
MINNESOTA DEPARTMENT OF TRANSPORTATION
OFFICE OF TRANSPORTATION SYSTEM MANAGEMENT

IN COOPERATION WITH
U.S. DEPARTMENT OF TRANSPORTATION
FEDERAL HIGHWAY ADMINISTRATION



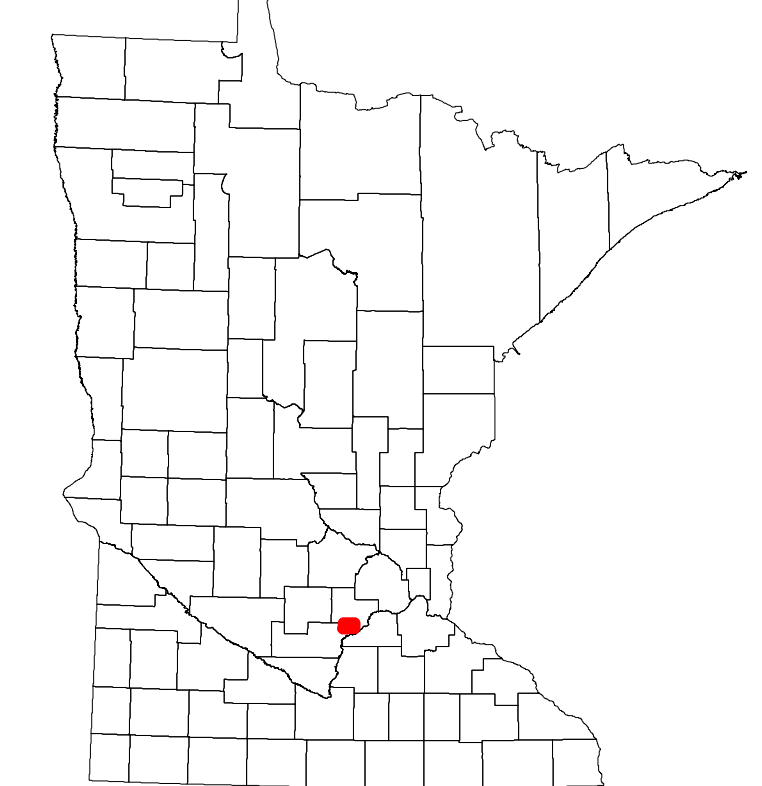
2022

Projection:
Transverse Mercator
NAD 1986
UTM Zone 15

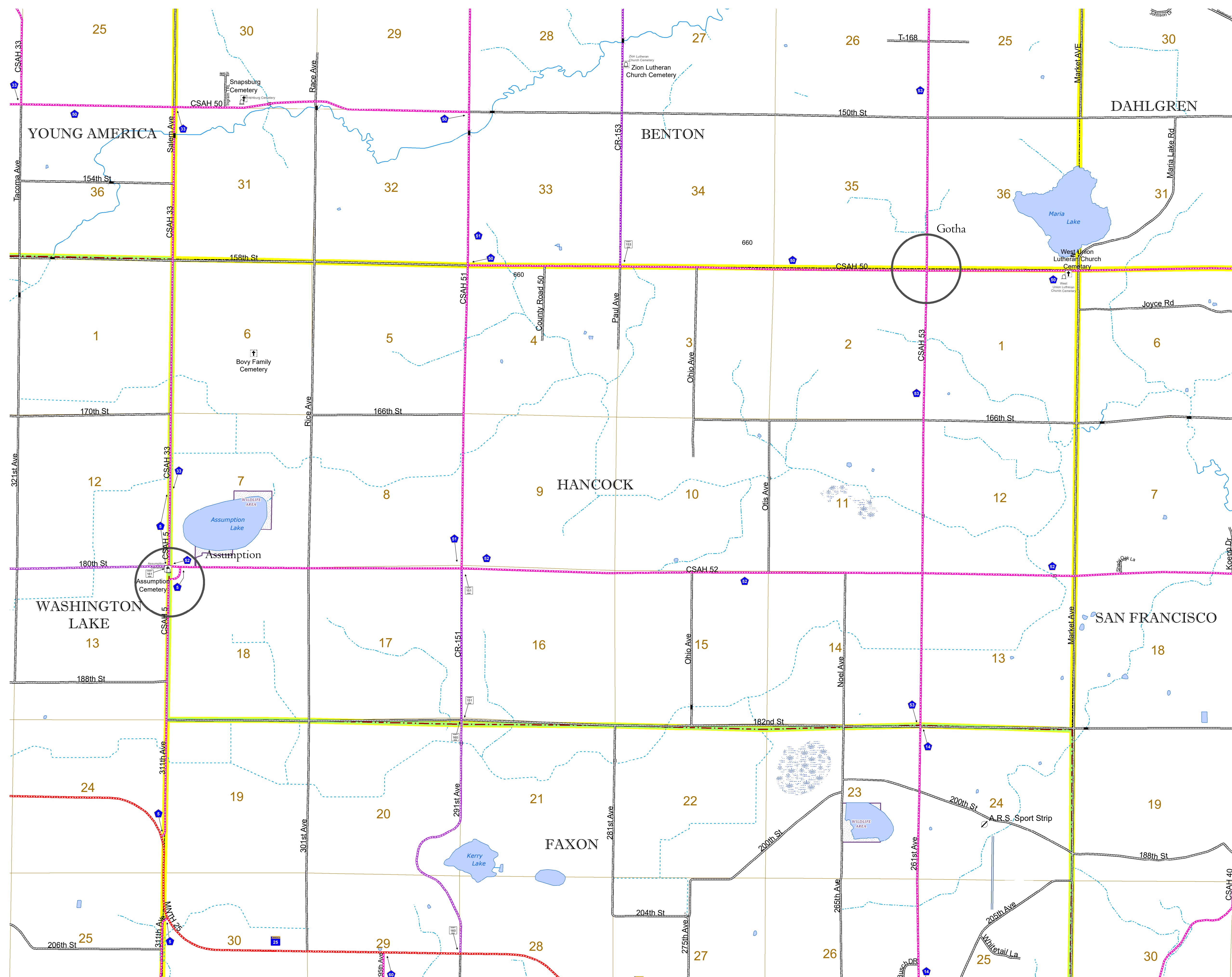


North American Datum
of 1986

ROAD AND ROADWAY FEATURES		RAILROAD AND RAILWAY FEATURES		AVIATION FEATURES		BOUNDARY FEATURES	
INTERSTATE	CONCRETE	EMPIRE BUILDER STATION (AMTRAK)	COMMERCIAL AIRPORT	TRIBAL LAND	STATE OF MINNESOTA	COUNTY	MUNICIPALITY
US HIGHWAY	BITUMINOUS	NORTHSTAR STATION (COMPUTER)	GENERAL AIRPORT	STATE OF MINNESOTA	COUNTY	MUNICIPALITY	UNORGANIZED TERRITORY
MN HIGHWAY	GRAVEL	LIGHT RAIL	AIRSTRIP	FEDERAL ADJUSTED URBAN AREA (2014)	CIVIL TOWNSHIP	CONGRESSIONAL TOWNSHIP	SECTION
COUNTY STATE AID HIGHWAY	DIRT/UNIMPROVED	BLUE LINE	SEAPLANE	CIVIL TOWNSHIP	CONGRESSIONAL TOWNSHIP	SECTION	MILITARY
COUNTY ROAD	OTHER	GREEN LINE	AIRPORT RUNWAY	CIVIL TOWNSHIP	CONGRESSIONAL TOWNSHIP	SECTION	VOYAGEURS NATIONAL PARK
TOWNSHIP ROAD	UNKNOWN	LONG BRIDGE (200' OR GREATER SPAN)		CIVIL TOWNSHIP	CONGRESSIONAL TOWNSHIP	SECTION	BOUNDARY WATERS CANOE AREA WILDERNESS
UNORGANIZED TERRITORY ROAD		MAJOR BRIDGE (20' TO 200' SPAN)		CIVIL TOWNSHIP	CONGRESSIONAL TOWNSHIP	SECTION	STATE PARK
OTHER ROADS		MINOR BRIDGE (5' TO 20' SPAN)		CIVIL TOWNSHIP	CONGRESSIONAL TOWNSHIP	SECTION	REGIONAL PARK
Municipal		DAM		CIVIL TOWNSHIP	CONGRESSIONAL TOWNSHIP	SECTION	NATIONAL FOREST
Private		LOCK AND DAM		CIVIL TOWNSHIP	CONGRESSIONAL TOWNSHIP	SECTION	NATIONAL AND STATE FOREST
National Monument				CIVIL TOWNSHIP	CONGRESSIONAL TOWNSHIP	SECTION	STATE FOREST
State Forest				CIVIL TOWNSHIP	CONGRESSIONAL TOWNSHIP	SECTION	NATIONAL TRAIL
State Game				CIVIL TOWNSHIP	CONGRESSIONAL TOWNSHIP	SECTION	WILDLIFE REFUGUE AREA
State Park				CIVIL TOWNSHIP	CONGRESSIONAL TOWNSHIP	SECTION	WILDLIFE MANAGEMENT AREA
Preserve				CIVIL TOWNSHIP	CONGRESSIONAL TOWNSHIP	SECTION	HYDROLOGIC FEATURES
				CIVIL TOWNSHIP	CONGRESSIONAL TOWNSHIP	SECTION	RIVER OR STREAM (PERMANENT)
				CIVIL TOWNSHIP	CONGRESSIONAL TOWNSHIP	SECTION	LAKE, POND OR RESERVOIR
				CIVIL TOWNSHIP	CONGRESSIONAL TOWNSHIP	SECTION	STREAM (INTERMITTENT)
				CIVIL TOWNSHIP	CONGRESSIONAL TOWNSHIP	SECTION	DRAINAGE DITCH
				CIVIL TOWNSHIP	CONGRESSIONAL TOWNSHIP	SECTION	WETLAND
				CIVIL TOWNSHIP	CONGRESSIONAL TOWNSHIP	SECTION	ISLAND OR LAND
				CIVIL TOWNSHIP	CONGRESSIONAL TOWNSHIP	SECTION	REGIONAL WATERSHED



Population (U.S. Census 2010): 345



To request information from this document in an alternative format, call 651-366-4718 or 1-800-657-3774 (Greater Minnesota); 711 or 1-800-627-3529 (Minnesota Relay). You may also send an e-mail to ADRequest.dot@state.mn.us. (Please request at least one week in advance.)