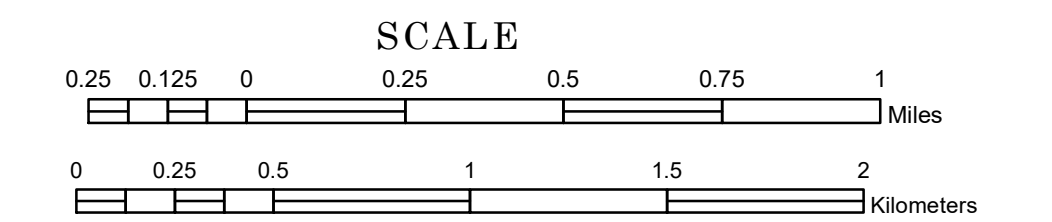


TOWNSHIP OF BULL MOOSE

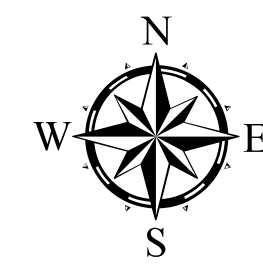
PREPARED BY THE
MINNESOTA DEPARTMENT OF TRANSPORTATION
OFFICE OF TRANSPORTATION SYSTEM MANAGEMENT

IN COOPERATION WITH
U.S. DEPARTMENT OF TRANSPORTATION
FEDERAL HIGHWAY ADMINISTRATION



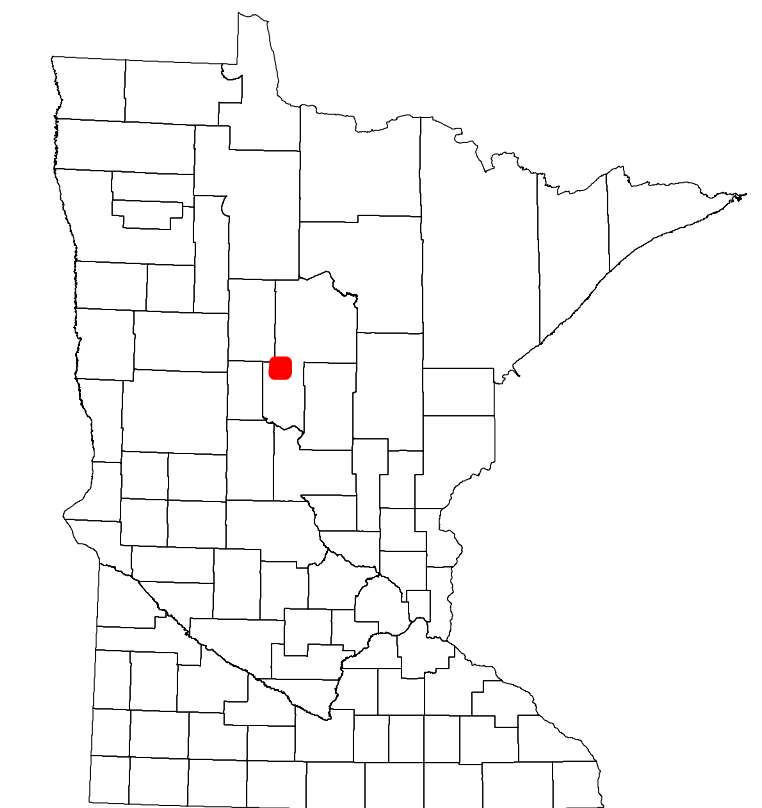
2022

Projection:
Transverse Mercator
NAD 1986
UTM Zone 15

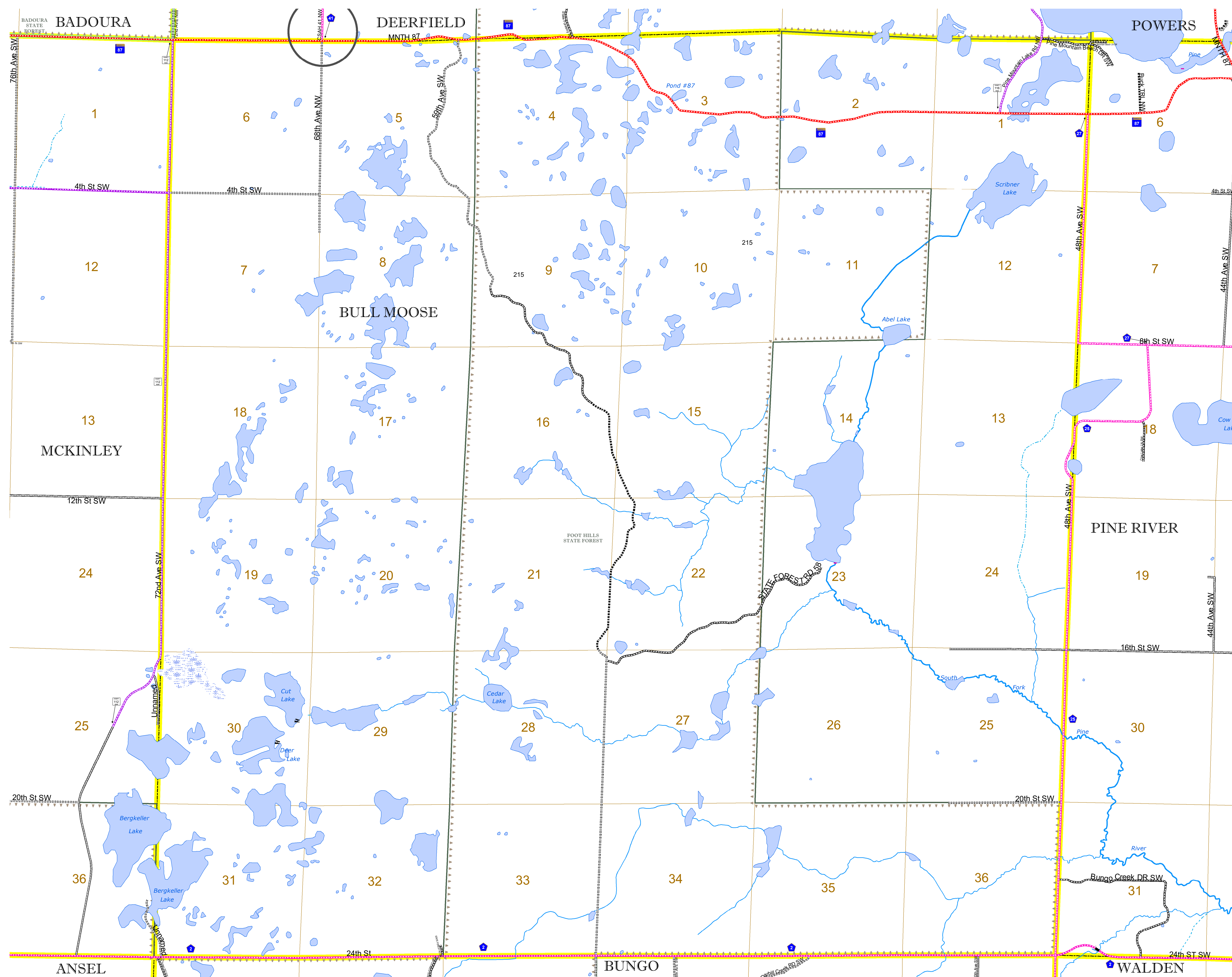


North American Datum
of 1986

ROAD AND ROADWAY FEATURES		RAILROAD AND RAILWAY FEATURES		AVIATION FEATURES	
INTERSTATE	CONCRETE	EMPIRE BUILDER STATION (AMTRAK)	COMMERCIAL AIRPORT	GENERAL AIRPORT	TRIBAL LAND
US HIGHWAY	BITUMINOUS	NORTHSTAR STATION (COMPUTER)	AIRSTRIP	AIRSTRIP	STATE OF MINNESOTA
MN HIGHWAY	GRAVEL	LIGHT RAIL	SEAPLANE	SEAPLANE	COUNTY
COUNTY STATE AID HIGHWAY	DIRT/UNIMPROVED	BLUE LINE	AIRPORT RUNWAY	AIRPORT RUNWAY	MUNICIPALITY
COUNTY ROAD	OTHER	GREEN LINE	BOUNDARY FEATURES	BOUNDARY FEATURES	UNINCORPORATED TOWNSHIP
TOWNSHIP ROAD	UNKNOWN	INFRASTRUCTURE FEATURES	STATE HISTORICAL MARKER	STATE HISTORICAL MARKER	FEDERAL ADJUSTED URBAN AREA (2014)
UNORGANIZED TERRITORY ROAD	RAMP OR CONNECTOR	LONG BRIDGE (200' OR GREATER SPAN)	STATE CAPITAL	STATE CAPITAL	CIVIL TOWNSHIP
OTHER ROADS	INTERSTATE EXIT	MAJOR BRIDGE (20' TO 200' SPAN)	COUNTY SEAT	COUNTY SEAT	CONGRESSIONAL TOWNSHIP
Municipal	GREAT RIVER ROAD	MINOR BRIDGE (5' TO 20' SPAN)	CITY CENTER	CITY CENTER	SECTION
Private	AVIATION FEATURES	LOCK AND DAM	UNINCORPORATED COMMUNITY	UNINCORPORATED COMMUNITY	MILITARY
National Monument	GENERAL AIRPORT				VOYAGEURS NATIONAL PARK
National Park	AIRSTRIP				BOUNDARY WATERS CANOE AREA WILDERNESS
National Wildlife Refuge	SEAPLANE				STATE PARK
State Park	AIRPORT RUNWAY				REGIONAL PARK
Preserve	BOUNDARY FEATURES				NATIONAL FOREST
	TRIBAL LAND				NATIONAL AND STATE FOREST
	STATE OF MINNESOTA				STATE FOREST
	COUNTY				NATIONAL TRAIL
	MUNICIPALITY				WILDLIFE REFUGUE AREA
	UNINCORPORATED TOWNSHIP				WILDLIFE MANAGEMENT AREA
	FEDERAL ADJUSTED URBAN AREA (2014)				HYDROLOGIC FEATURES
	CIVIL TOWNSHIP				RIVER OR STREAM (PERMANENT)
	CONGRESSIONAL TOWNSHIP				LAKE, POND OR RESERVOIR
	SECTION				STREAM (INTERMITTENT)
	MILITARY				DRAINAGE DITCH
	VOYAGEURS NATIONAL PARK				WETLAND
	BOUNDARY WATERS CANOE AREA WILDERNESS				ISLAND OR LAND
	STATE PARK				REGIONAL WATERSHED
	REGIONAL PARK				
	NATIONAL FOREST				
	NATIONAL AND STATE FOREST				
	STATE FOREST				
	NATIONAL TRAIL				
	WILDLIFE REFUGUE AREA				
	WILDLIFE MANAGEMENT AREA				
	HYDROLOGIC FEATURES				
	RIVER OR STREAM (PERMANENT)				
	LAKE, POND OR RESERVOIR				
	STREAM (INTERMITTENT)				
	DRAINAGE DITCH				
	WETLAND				
	ISLAND OR LAND				
	REGIONAL WATERSHED				



Population (U.S. Census 2010): 133



To request information from this document in an alternative format, call 651-366-4718 or 1-800-657-3774 (Greater Minnesota); 711 or 1-800-627-3529 (Minnesota Relay). You may also send an e-mail to ADArequest.dot@state.mn.us. (Please request at least one week in advance.)