

WHITE OAK

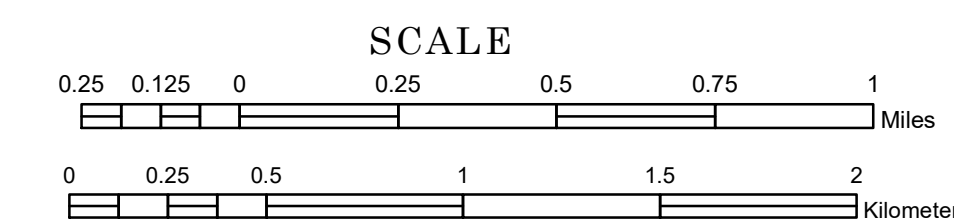
HIRAM

BIRCH LAKE

TOWNSHIP OF DEERFIELD

PREPARED BY THE
MINNESOTA DEPARTMENT OF TRANSPORTATION
OFFICE OF TRANSPORTATION SYSTEM MANAGEMENT

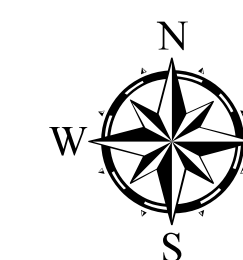
IN COOPERATION WITH
U.S. DEPARTMENT OF TRANSPORTATION
FEDERAL HIGHWAY ADMINISTRATION



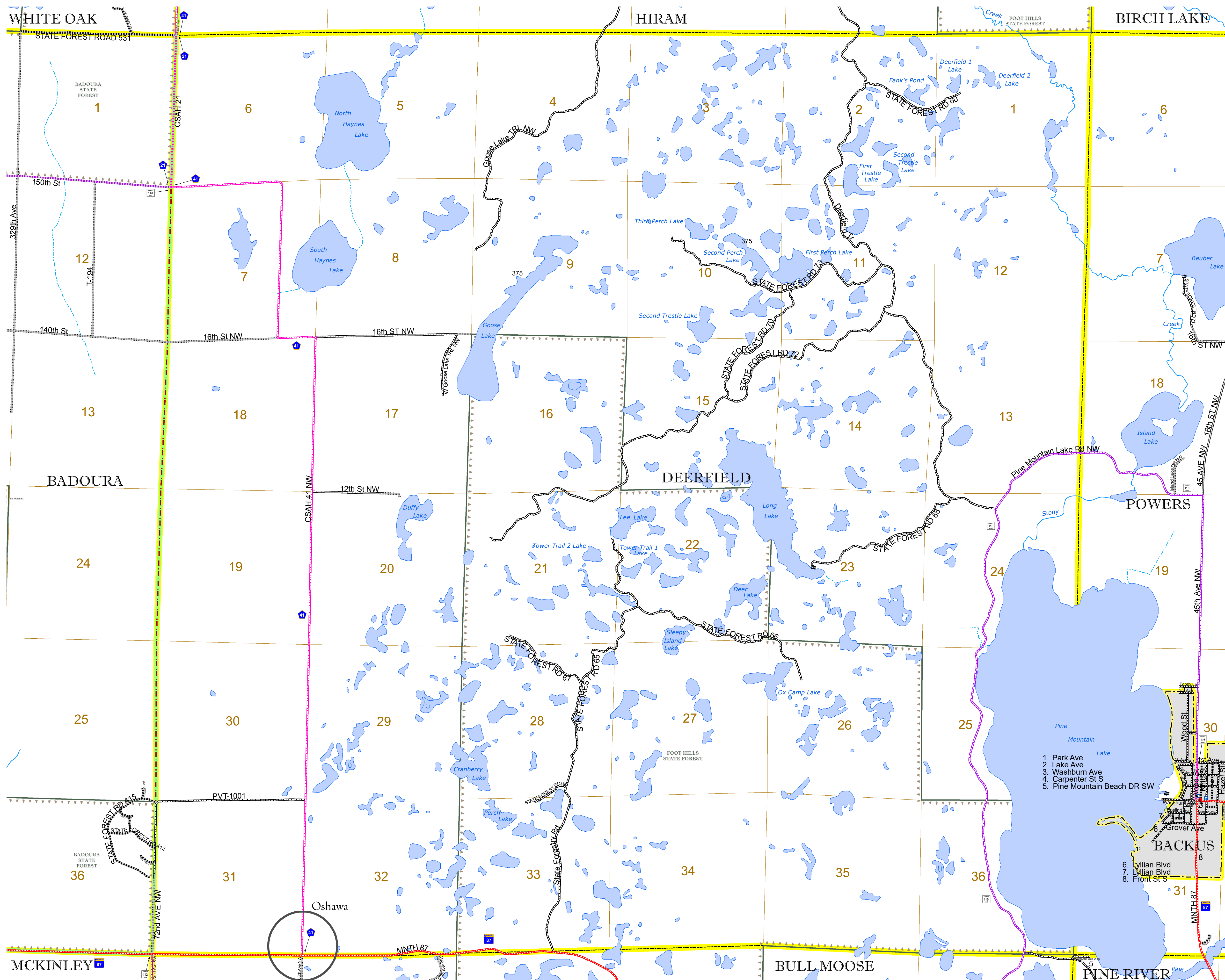
1 in = 1,600 ft

2022

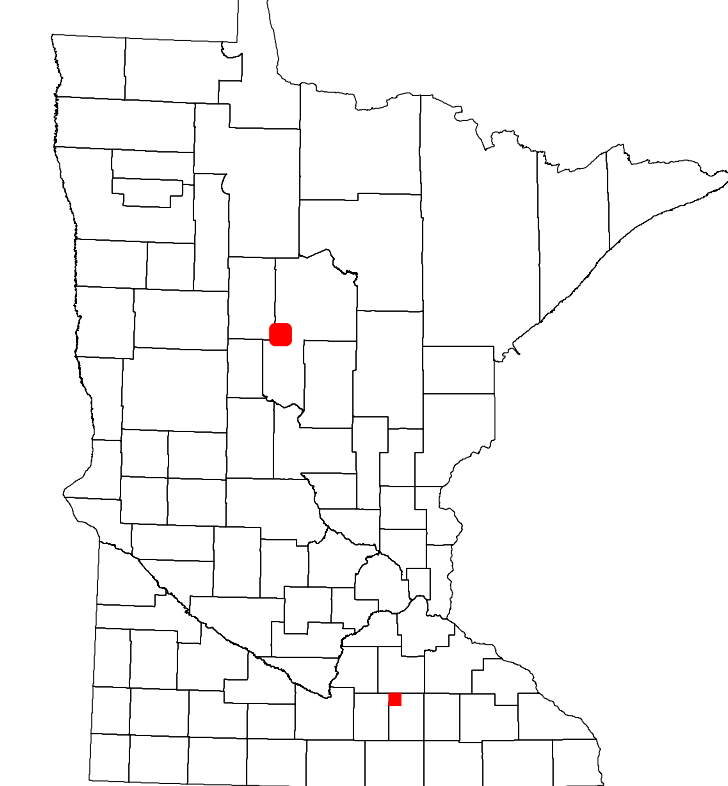
Projection:
Transverse Mercator
NAD 1986
UTM Zone 15



North American Datum
of 1986



ROAD AND ROADWAY FEATURES		BOUNDARY FEATURES	
INTERSTATE	[Symbol]	CONCRETE	[Symbol]
US HIGHWAY	[Symbol]	BITUMINOUS	[Symbol]
MN HIGHWAY	[Symbol]	GRAVEL	[Symbol]
COUNTY STATE AID HIGHWAY	[Symbol]	DIRT/UNIMPROVED	[Symbol]
COUNTY ROAD	[Symbol]	OTHER	[Symbol]
TOWNSHIP ROAD	[Symbol]	UNKNOWN	[Symbol]
UNORGANIZED TERRITORY ROAD	[Symbol]		
OTHER ROADS			
Municipal	[Symbol]	RAMP OR CONNECTOR	[Symbol]
Private	[Symbol]	INTERSTATE EXIT	[Symbol]
National Monument	[Symbol]	STATE OF MINNESOTA	[Symbol]
National Park	[Symbol]	COUNTY	[Symbol]
National Wildlife	[Symbol]	MUNICIPALITY	[Symbol]
State Game	[Symbol]	UNORGANIZED TERRITORY	[Symbol]
Military	[Symbol]	FEDERAL ADJUSTED URBAN AREA (2014)	[Symbol]
		CIVIL TOWNSHIP	[Symbol]
		CONGRESSIONAL TOWNSHIP	[Symbol]
		SECTION	[Symbol]
		MILITARY	[Symbol]
		VOYAGEURS NATIONAL PARK	[Symbol]
		BOUNDARY WATERS CANOE AREA WILDERNESS	[Symbol]
		STATE PARK	[Symbol]
		REGIONAL PARK	[Symbol]
		NATIONAL FOREST	[Symbol]
		NATIONAL AND STATE FOREST	[Symbol]
		STATE FOREST	[Symbol]
		NATIONAL TRAIL	[Symbol]
		WILDLIFE REFUGUE AREA	[Symbol]
		WILDLIFE MANAGEMENT AREA	[Symbol]
		HYDROLOGIC FEATURES	[Symbol]
		RIVER OR STREAM (PERMANENT)	[Symbol]
		LAKE, POND OR RESERVOIR	[Symbol]
		STREAM (INTERMITTENT)	[Symbol]
		DRAINAGE DITCH	[Symbol]
		WETLAND	[Symbol]
		ISLAND OR LAND	[Symbol]
		REGIONAL WATERSHED	[Symbol]



Population (U.S. Census 2010): 118

To request information from this document in an alternative format, call 651-366-4718 or 1-800-657-3774 (Greater Minnesota); 711 or 1-800-627-3529 (Minnesota Relay). You may also send an e-mail to ADAREquest.dot@state.mn.us. (Please request at least one week in advance.)