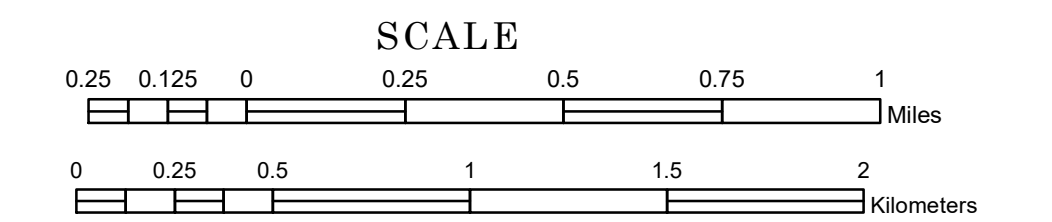


TOWNSHIP OF BEAR CREEK

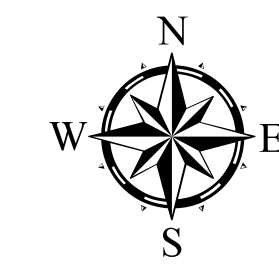
PREPARED BY THE
MINNESOTA DEPARTMENT OF TRANSPORTATION
OFFICE OF TRANSPORTATION SYSTEM MANAGEMENT

IN COOPERATION WITH
U.S. DEPARTMENT OF TRANSPORTATION
FEDERAL HIGHWAY ADMINISTRATION



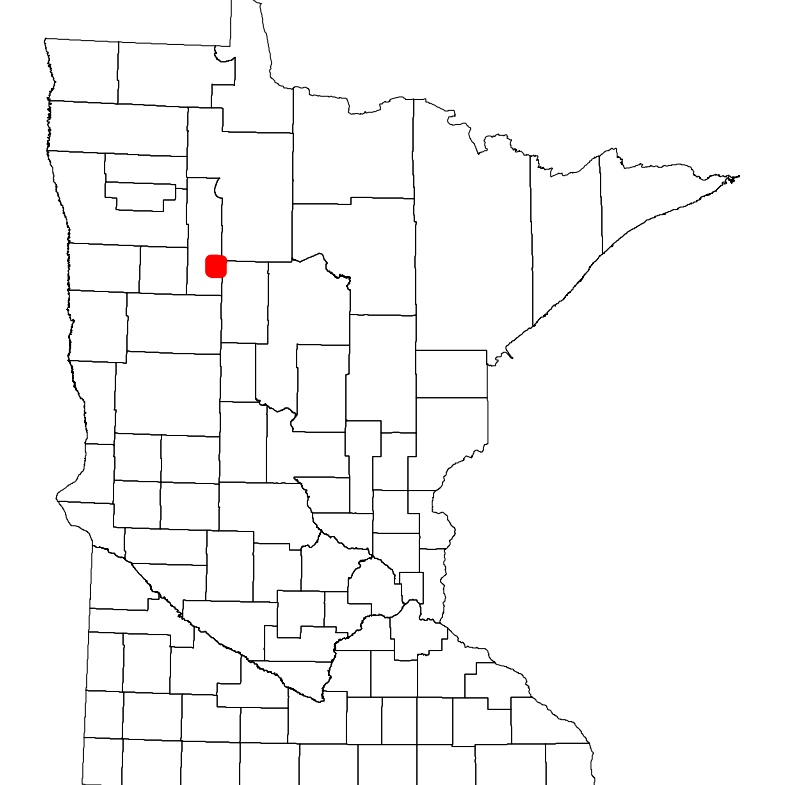
2022

Projection:
Transverse Mercator
NAD 1986
UTM Zone 15

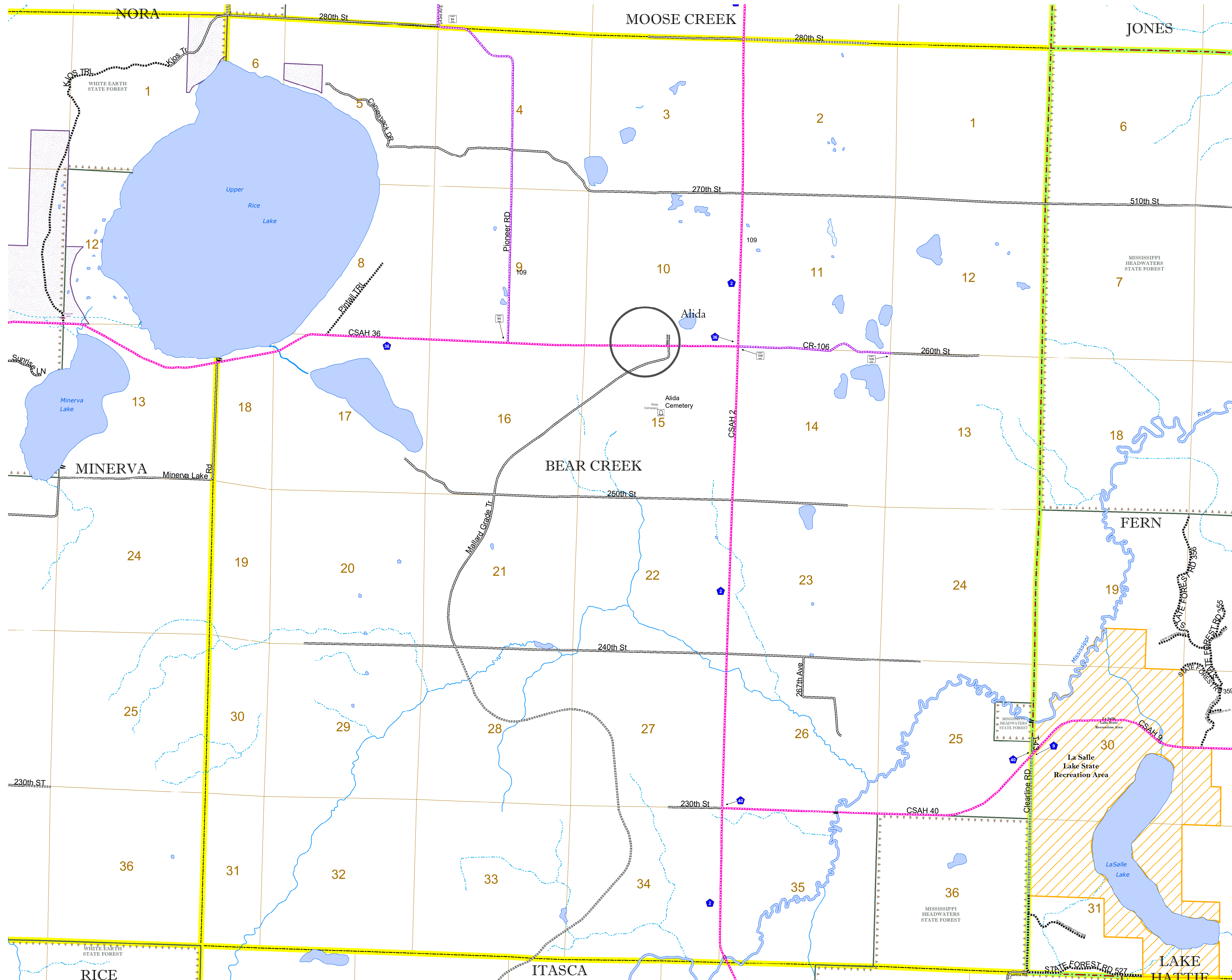


North American Datum
of 1986

ROAD AND ROADWAY FEATURES	AVIATION FEATURES	BOUNDARY FEATURES
INTERSTATE	COMMERCIAL AIRPORT	TRIBAL LAND
US HIGHWAY	GENERAL AIRPORT	STATE OF MINNESOTA
MN HIGHWAY	AIRSTRIP	COUNTY
COUNTY STATE AID HIGHWAY	SEAPLANE	MUNICIPALITY
COUNTY ROAD	AIRPORT RUNWAY	UNORGANIZED TERRITORY
TOWNSHIP ROAD		FEDERAL ADJUSTED URBAN AREA (2014)
UNORGANIZED TERRITORY ROAD		CIVIL TOWNSHIP
OTHER ROADS		CONGRESSIONAL TOWNSHIP
Municipal		SECTION
Private		MILITARY
National Monument		VOYAGEURS NATIONAL PARK
State Forest		BOUNDARY WATERS CANOE AREA WILDERNESS
Nature Service		STATE PARK
Mulden		REGIONAL PARK
		NATIONAL FOREST
		NATIONAL AND STATE FOREST
		STATE FOREST
		NATIONAL TRAIL
		WILDLIFE REFUGUE AREA
		WILDLIFE MANAGEMENT AREA
		HYDROLOGIC FEATURES
		RIVER OR STREAM (PERMANENT)
		LAKE, POND OR RESERVOIR
		STREAM (INTERMITTENT)
		DRAINAGE DITCH
		WETLAND
		ISLAND OR LAND
		REGIONAL WATERSHED



Population (U.S. Census 2010): 111



To request information from this document in an alternative format, call 651-366-4718 or 1-800-657-3774 (Greater Minnesota); 711 or 1-800-627-3529 (Minnesota Relay). You may also send an e-mail to ADARquest.dot@state.mn.us. (Please request at least one week in advance.)