

TOWNSHIP OF ROSE HILL

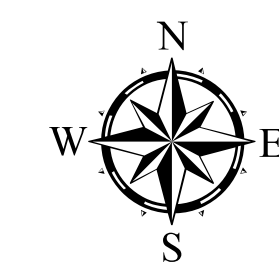
PREPARED BY THE
MINNESOTA DEPARTMENT OF TRANSPORTATION
OFFICE OF TRANSPORTATION SYSTEM MANAGEMENT

IN COOPERATION WITH
U.S. DEPARTMENT OF TRANSPORTATION
FEDERAL HIGHWAY ADMINISTRATION



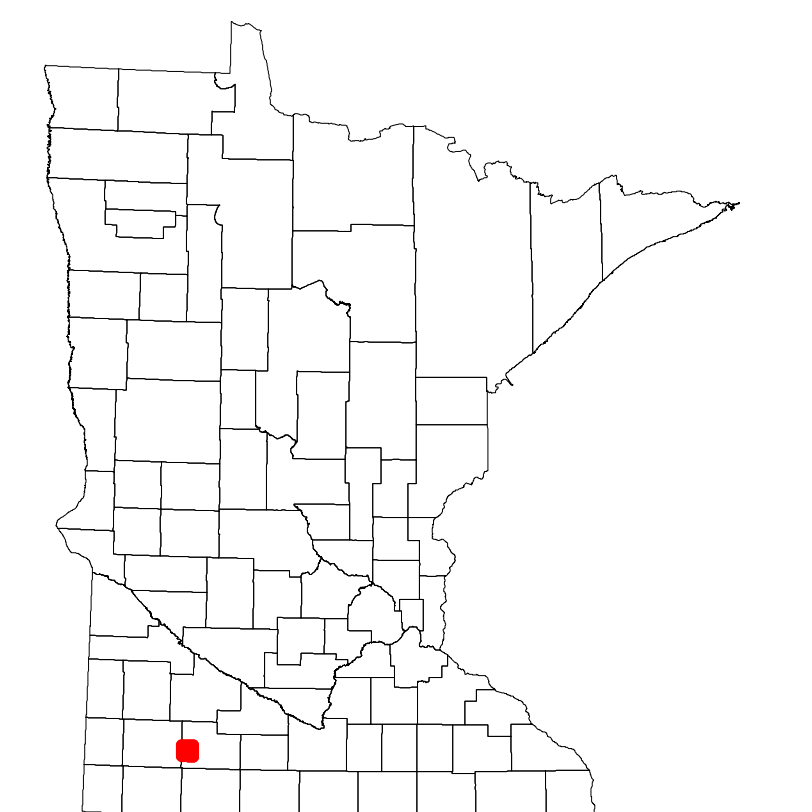
2022

Projection:
Transverse Mercator
NAD 1986
UTM Zone 15

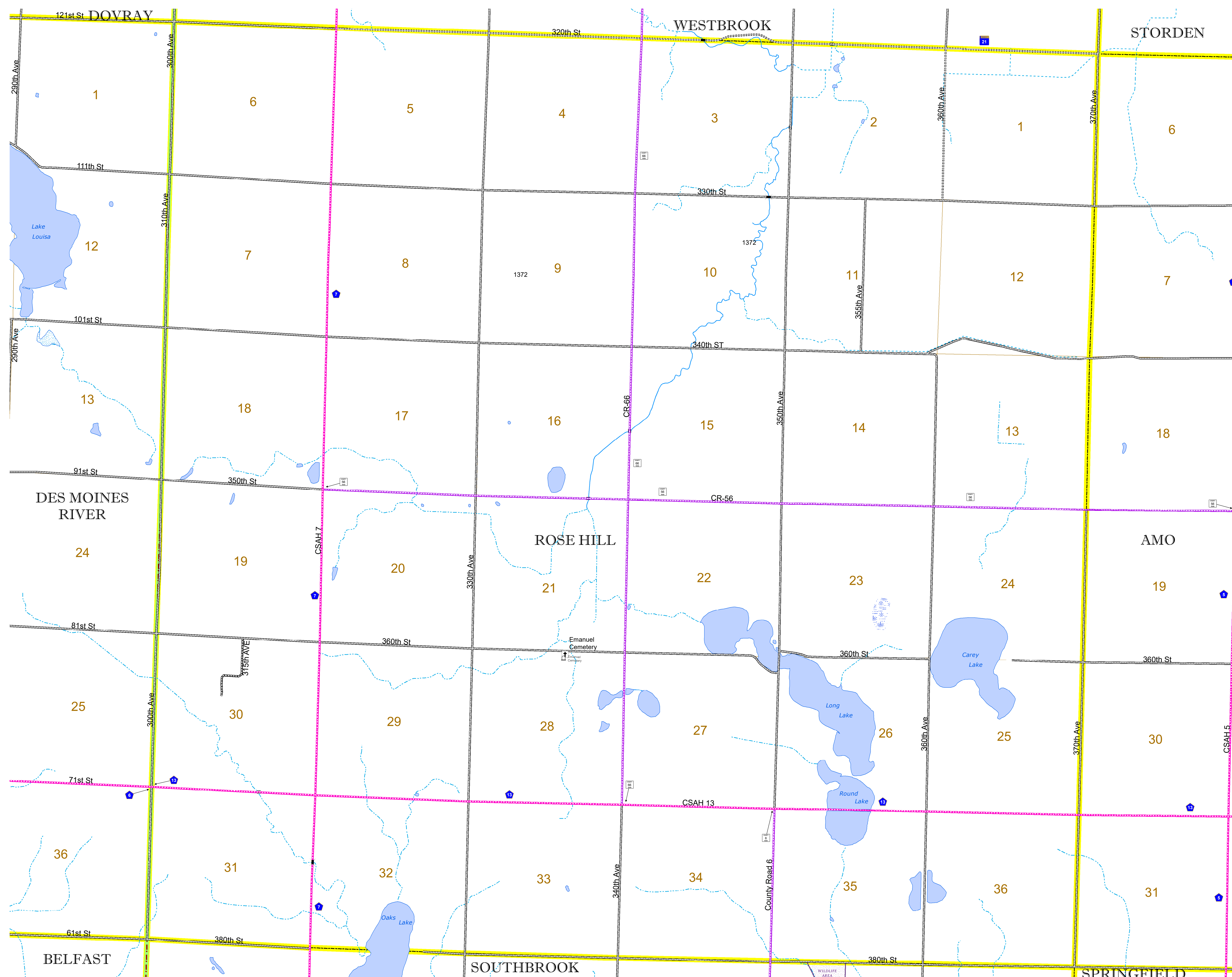


North American Datum
of 1986

ROAD AND ROADWAY FEATURES		AVIATION FEATURES	
INTERSTATE	CONCRETE	COMMERCIAL AIRPORT	GENERAL AIRPORT
US HIGHWAY	BITUMINOUS	AIRSTRIP	SEAPLANE
MN HIGHWAY	GRAVEL	AIRPORT RUNWAY	AIRPORT RUNWAY
COUNTY STATE AID HIGHWAY	DIRT/UNIMPROVED		
COUNTY ROAD	OTHER		
TOWNSHIP ROAD	UNKNOWN		
UNORGANIZED TERRITORY ROAD			
OTHER ROADS			
Municipal	RAMP OR CONNECTOR		
Private	INTERSTATE EXT.		
National Monument	GREAT RIVER ROAD		
National Park			
National Wildlife			
State Game			
State Park			
Preserve			
RAILROAD AND RAILWAY FEATURES		BOUNDARY FEATURES	
EMPIRE BUILDER STATION (AMTRAK)	TRIBAL LAND	STATE OF MINNESOTA	COUNTY
NORTHSTAR STATION (COMMUTER)	STATE OF MINNESOTA	MUNICIPALITY	UNORGANIZED TERRITORY
LIGHT RAIL	FEDERAL ADJUSTED URBAN AREA (2014)	CIVIL TOWNSHIP	CONGRESSIONAL TOWNSHIP
BLUE LINE			
GREEN LINE			
INFRASTRUCTURE FEATURES			
LONG BRIDGE (200' OR GREATER SPAN)			
MAJOR BRIDGE (20' TO 200' SPAN)			
MINOR BRIDGE (5' TO 20' SPAN)			
DAM			
LOCK AND DAM			
CITY CENTERS			
STATE CAPITAL			
COUNTY SEAT			
CITY CENTER			
UNINCORPORATED COMMUNITY			
PUBLIC SERVICE FEATURES			
MNDOT OFFICE			
MNDOT TRUCK STATION			
HIGHWAY PATROL DISTRICT OFFICE			
STATE TRAVEL INFORMATION CENTER			
REST AREA (FULL SERVICE)			
REST AREA (VAULT TOILET)			
WAYSIDE (VAULT OR PIT TOILET)			
PARK AND RIDE LOT			
PORT OF ENTRY			
PUBLIC ACCESS POINT			
MN STATE COLLEGE AND UNIVERSITY SYSTEM (MNSCU)			
UNIVERSITY OF MN SYSTEM			
FAIRGROUNDS			
CULTURAL FEATURES			
STATE HISTORICAL MARKER			
HISTORIC DISTRICT			
HISTORIC SITE			
MONUMENT			



Population (U.S. Census 2010): 166



To request information from this document in an alternative format, call 651-366-4718 or 1-800-657-3774 (Greater Minnesota); 711 or 1-800-627-3529 (Minnesota Relay). You may also send an e-mail to ADarequest.dot@state.mn.us. (Please request at least one week in advance.)