

# TOWNSHIP OF STORDEN

PREPARED BY THE  
MINNESOTA DEPARTMENT OF TRANSPORTATION  
OFFICE OF TRANSPORTATION SYSTEM MANAGEMENT

IN COOPERATION WITH  
U.S. DEPARTMENT OF TRANSPORTATION  
FEDERAL HIGHWAY ADMINISTRATION



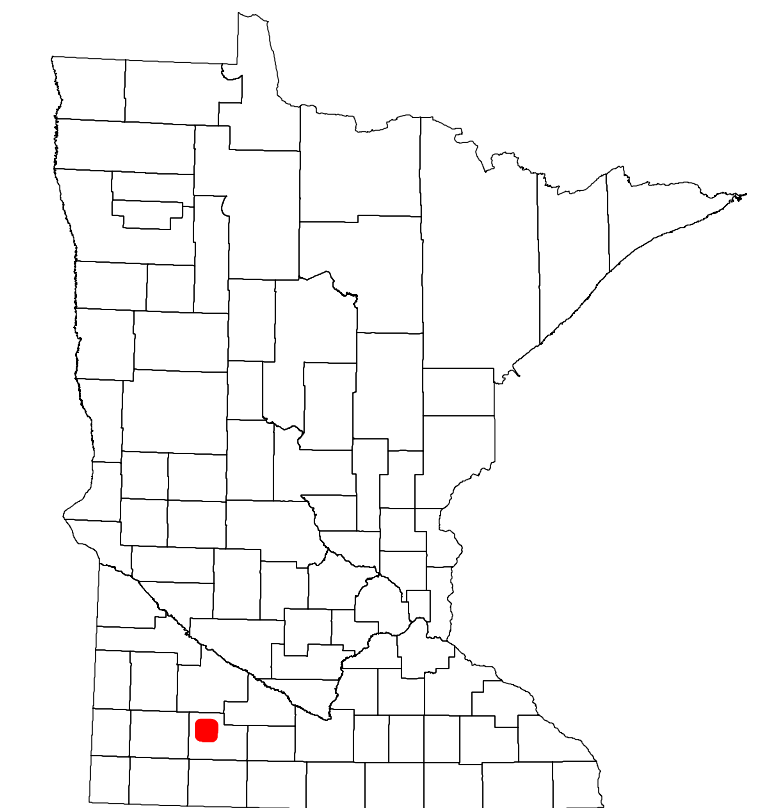
2022

Projection:  
Transverse Mercator  
NAD 1986  
UTM Zone 15

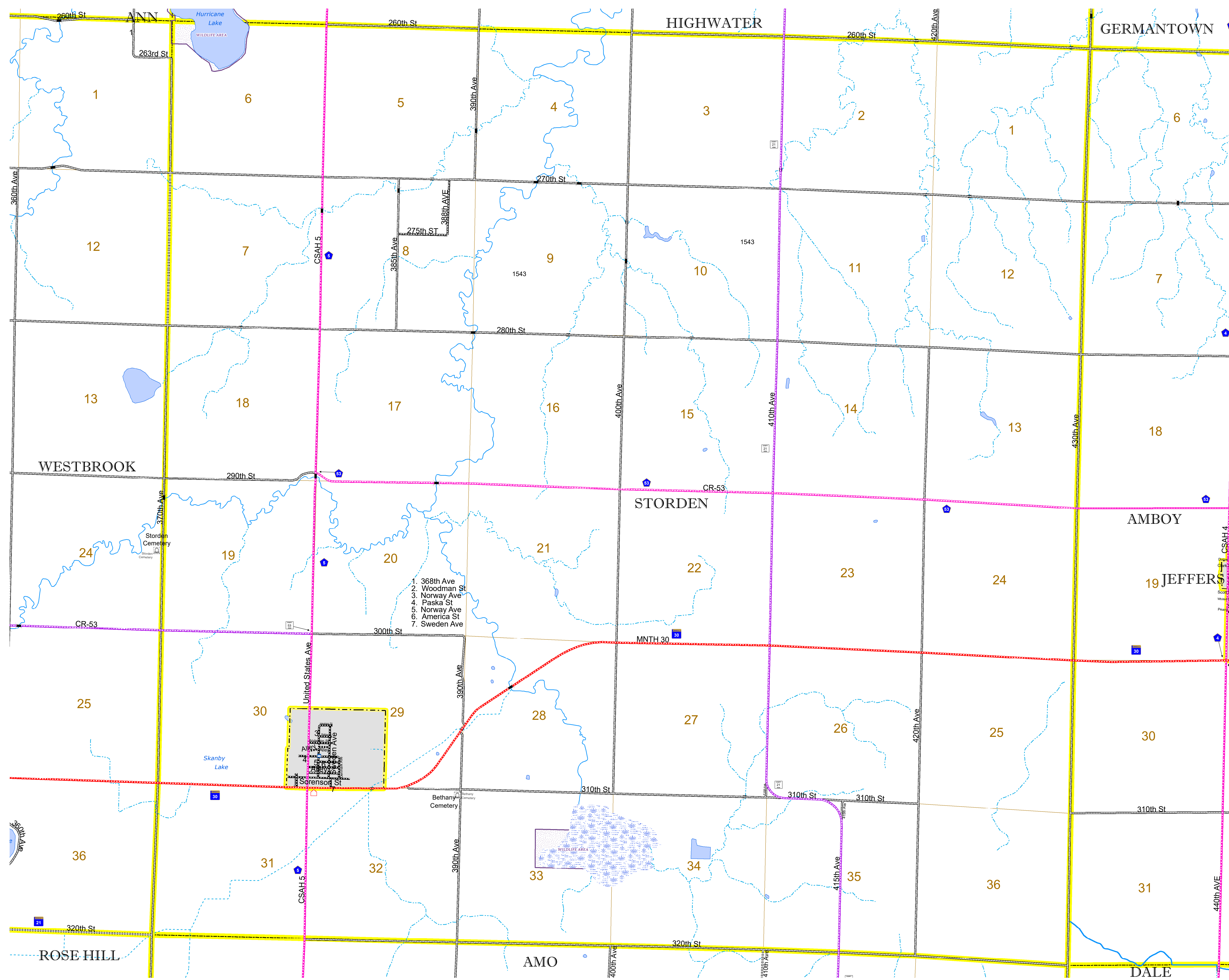


North American Datum  
of 1986

ROAD AND ROADWAY FEATURES		AVIATION FEATURES	
INTERSTATE	CONCRETE	COMMERCIAL AIRPORT	GENERAL AIRPORT
US HIGHWAY	BITUMINOUS	AIRSTRIP	SEAPLANE
MN HIGHWAY	GRAVEL	AIRPORT RUNWAY	BOUNDARY FEATURES
COUNTY STATE AID HIGHWAY	DIRT/UNIMPROVED	TRIAL LAND	TRIBAL LAND
COUNTY ROAD	OTHER	STATE OF MINNESOTA	COUNTY
TOWNSHIP ROAD	UNKNOWN	MUNICIPALITY	MUNICIPALITY
UNORGANIZED TERRITORY ROAD		UNORGANIZED TERRITORY	UNORGANIZED TERRITORY
OTHER ROADS		FEDERAL ADJUSTED URBAN AREA (2014)	FEDERAL ADJUSTED URBAN AREA (2014)
Municipal		CIVIL TOWNSHIP	CIVIL TOWNSHIP
Private		CONGRESSIONAL TOWNSHIP	CONGRESSIONAL TOWNSHIP
National Monument		SECTION	SECTION
National Wildlife Refuge		MILITARY	MILITARY
State Park		VOYAGEURS NATIONAL PARK	VOYAGEURS NATIONAL PARK
State Forest		BOUNDARY WATERS CANOE AREA WILDERNESS	BOUNDARY WATERS CANOE AREA WILDERNESS
State Game		STATE PARK	STATE PARK
State Game		REGIONAL PARK	REGIONAL PARK
State Game		NATIONAL FOREST	NATIONAL FOREST
State Game		NATIONAL AND STATE FOREST	NATIONAL AND STATE FOREST
State Game		STATE FOREST	STATE FOREST
State Game		NATIONAL TRAIL	NATIONAL TRAIL
State Game		WILDLIFE REFUGEMENT AREA	WILDLIFE REFUGEMENT AREA
State Game		WILDLIFE MANAGEMENT AREA	WILDLIFE MANAGEMENT AREA
State Game		HYDROLOGIC FEATURES	HYDROLOGIC FEATURES
State Game		RIVER OR STREAM (PERMANENT)	RIVER OR STREAM (PERMANENT)
State Game		LAKE, POND OR RESERVOIR	LAKE, POND OR RESERVOIR
State Game		STREAM (INTERMITTENT)	STREAM (INTERMITTENT)
State Game		DRAINAGE DITCH	DRAINAGE DITCH
State Game		WETLAND	WETLAND
State Game		ISLAND OR LAND	ISLAND OR LAND
State Game		REGIONAL WATERSHED	REGIONAL WATERSHED



Population (U.S. Census 2010): 165



- 368th Ave
- Woodman St
- Norway Ave
- Paska St
- Norway Ave
- America St
- Sweden Ave

To request information from this document in an alternative format, call 651-366-4718 or 1-800-657-3774 (Greater Minnesota); 711 or 1-800-627-3529 (Minnesota Relay). You may also send an e-mail to ADARrequest.dot@state.mn.us. (Please request at least one week in advance.)