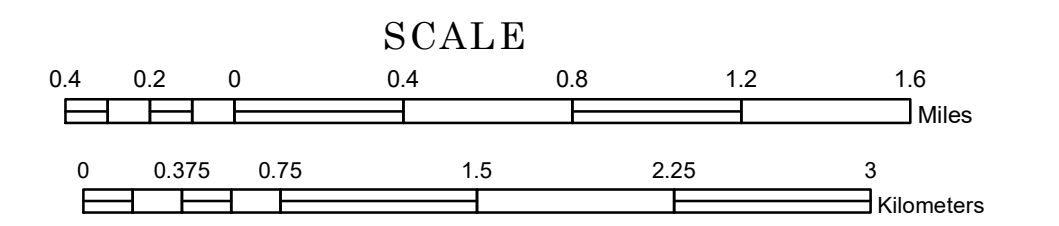


TOWNSHIP OF WELCH

PREPARED BY THE
MINNESOTA DEPARTMENT OF TRANSPORTATION
OFFICE OF TRANSPORTATION SYSTEM MANAGEMENT

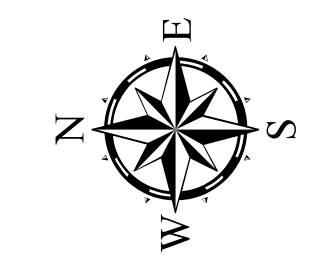
IN COOPERATION WITH
U.S. DEPARTMENT OF TRANSPORTATION
FEDERAL HIGHWAY ADMINISTRATION



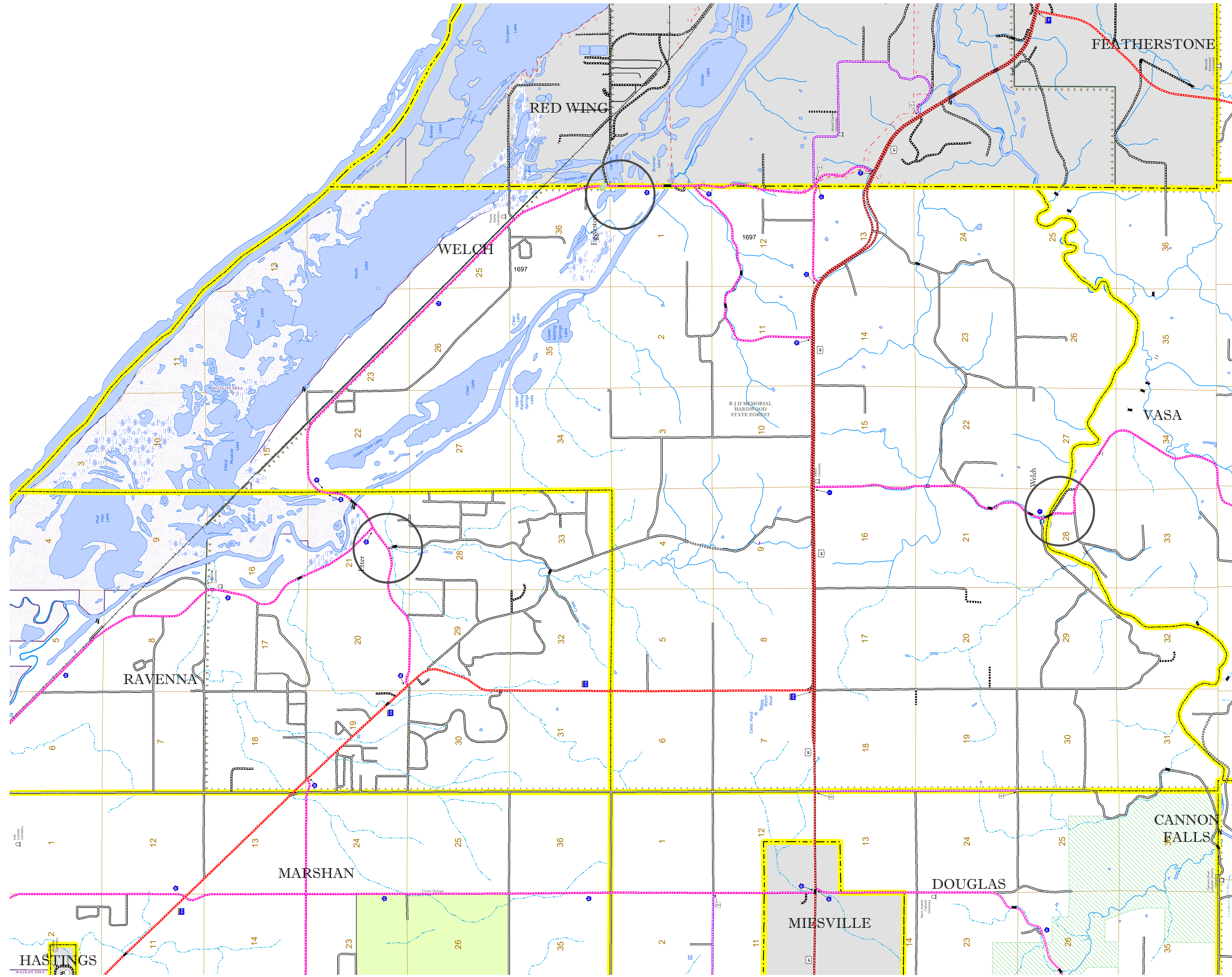
1 in = 2,400 ft

2022

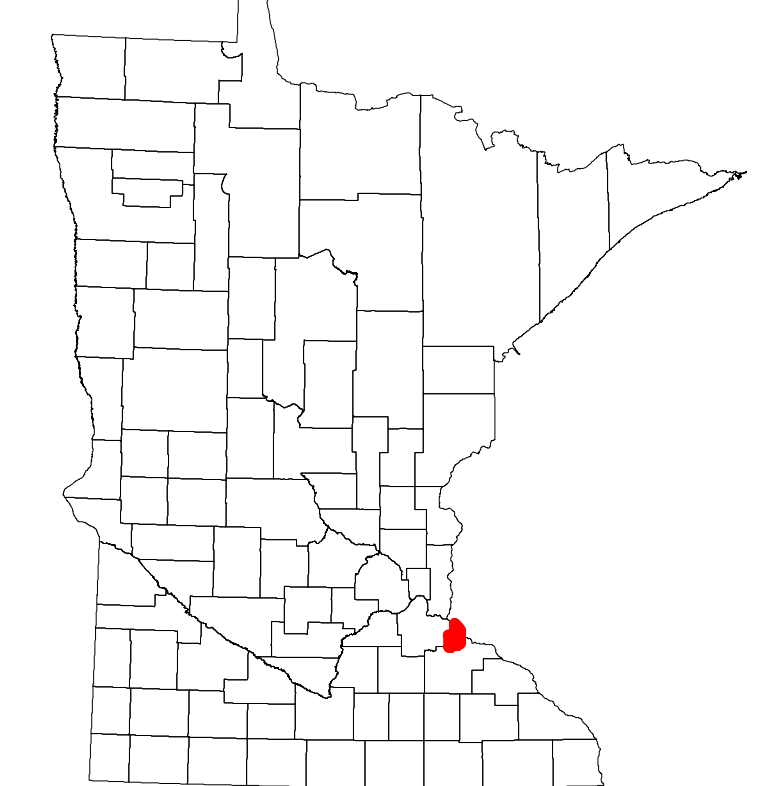
Projection:
Transverse Mercator
NAD 1986
UTM Zone 15



North American Datum
of 1986



| ROAD AND ROADWAY FEATURES | | RAILROAD AND RAILWAY FEATURES | | AVIATION FEATURES | |
|----------------------------|-----------------|------------------------------------|---------------------------------------|---------------------------------------|---------------------------------------|
| INTERSTATE | CONCRETE | EMPIRE BUILDER STATION (AMTRAK) | COMMERCIAL AIRPORT | GENERAL AIRPORT | TRIBAL LAND |
| US HIGHWAY | BITUMINOUS | NORTHSTAR STATION (COMMUTER) | AIRSTRIP | AIRSTRIP | STATE OF MINNESOTA |
| MN HIGHWAY | GRAVEL | LIGHT RAIL | SEAPLANE | SEAPLANE | COUNTY |
| COUNTY STATE AID HIGHWAY | DIRT/UNIMPROVED | BLUE LINE | AIRPORT RUNWAY | AIRPORT RUNWAY | MUNICIPALITY |
| COUNTY ROAD | OTHER | GREEN LINE | AVIATION FEATURES | AVIATION FEATURES | UNORGANIZED TERRITORY |
| TOWNSHIP ROAD | UNKNOWN | INFRASTRUCTURE FEATURES | BOUNDARY FEATURES | BOUNDARY FEATURES | FEDERAL ADJUSTED URBAN AREA (2014) |
| UNORGANIZED TERRITORY ROAD | | LONG BRIDGE (200' OR GREATER SPAN) | TRIAL LAND | TRIAL LAND | CIVIL TOWNSHIP |
| OTHER ROADS | | MAJOR BRIDGE (20' TO 200' SPAN) | STATE OF MINNESOTA | STATE OF MINNESOTA | CONGRESSIONAL TOWNSHIP |
| MUNICIPAL | | MINOR BRIDGE (5' TO 20' SPAN) | COUNTY | COUNTY | SECTION |
| PRIVATE | | DAM | MUNICIPALITY | MUNICIPALITY | MILITARY |
| NATIONAL MONUMENT | | LOCK AND DAM | UNORGANIZED TERRITORY | UNORGANIZED TERRITORY | VOYAGEURS NATIONAL PARK |
| NATIONAL PARK | | CITY CENTERS | FEDERAL ADJUSTED URBAN AREA (2014) | FEDERAL ADJUSTED URBAN AREA (2014) | BOUNDARY WATERS CANOE AREA WILDERNESS |
| NATIONAL WILDLIFE REFUGES | | STATE CAPITAL | CIVIL TOWNSHIP | CIVIL TOWNSHIP | STATE PARK |
| STATE GAME PRESERVE | | COUNTY SEAT | CONGRESSIONAL TOWNSHIP | CONGRESSIONAL TOWNSHIP | REGIONAL PARK |
| STATE PARK | | CITY CENTER | SECTION | SECTION | NATIONAL FOREST |
| | | UNINCORPORATED COMMUNITY | MILITARY | MILITARY | NATIONAL AND STATE FOREST |
| | | | VOYAGEURS NATIONAL PARK | VOYAGEURS NATIONAL PARK | STATE FOREST |
| | | | BOUNDARY WATERS CANOE AREA WILDERNESS | BOUNDARY WATERS CANOE AREA WILDERNESS | NATIONAL TRAIL |
| | | | STATE PARK | STATE PARK | WILDLIFE REFUGE AREA |
| | | | REGIONAL PARK | REGIONAL PARK | WILDLIFE MANAGEMENT AREA |
| | | | NATIONAL FOREST | NATIONAL FOREST | HYDROLOGIC FEATURES |
| | | | NATIONAL AND STATE FOREST | NATIONAL AND STATE FOREST | RIVER OR STREAM (PERMANENT) |
| | | | STATE FOREST | STATE FOREST | LAKE, POND OR RESERVOIR |
| | | | NATIONAL TRAIL | NATIONAL TRAIL | STREAM (INTERMITTENT) |
| | | | WILDLIFE REFUGE AREA | WILDLIFE REFUGE AREA | DRAINAGE DITCH |
| | | | WILDLIFE MANAGEMENT AREA | WILDLIFE MANAGEMENT AREA | WETLAND |
| | | | HYDROLOGIC FEATURES | HYDROLOGIC FEATURES | ISLAND OR LAND |
| | | | RIVER OR STREAM (PERMANENT) | RIVER OR STREAM (PERMANENT) | REGIONAL WATERSHED |
| | | | LAKE, POND OR RESERVOIR | LAKE, POND OR RESERVOIR | |
| | | | STREAM (INTERMITTENT) | STREAM (INTERMITTENT) | |
| | | | DRAINAGE DITCH | DRAINAGE DITCH | |
| | | | WETLAND | WETLAND | |
| | | | ISLAND OR LAND | ISLAND OR LAND | |
| | | | REGIONAL WATERSHED | REGIONAL WATERSHED | |



Population (U.S. Census 2010): 754

To request information from this document in an alternative format, call 651-366-4718 or 1-800-657-3774 (Greater Minnesota); 711 or 1-800-627-3529 (Minnesota Relay). You may also send an e-mail to ADAREquest.dot@state.mn.us. (Please request at least one week in advance.)