

TOWNSHIP OF JEFFERSON

PREPARED BY THE
MINNESOTA DEPARTMENT OF TRANSPORTATION
OFFICE OF TRANSPORTATION SYSTEM MANAGEMENT

IN COOPERATION WITH
U.S. DEPARTMENT OF TRANSPORTATION
FEDERAL HIGHWAY ADMINISTRATION



1 in = 1,600 ft

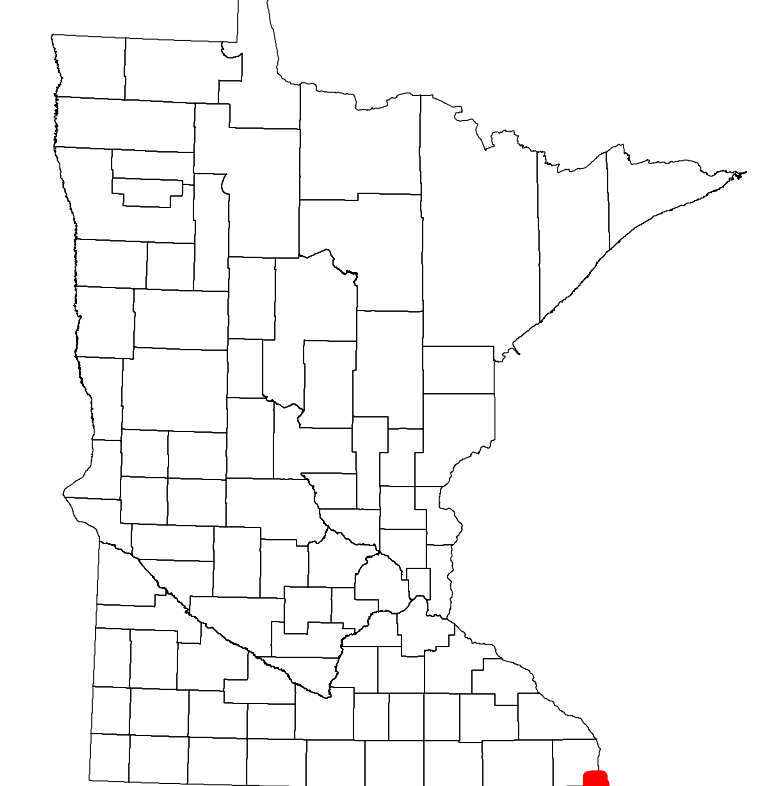
2022

Projection:
Transverse Mercator
NAD 1986
UTM Zone 15

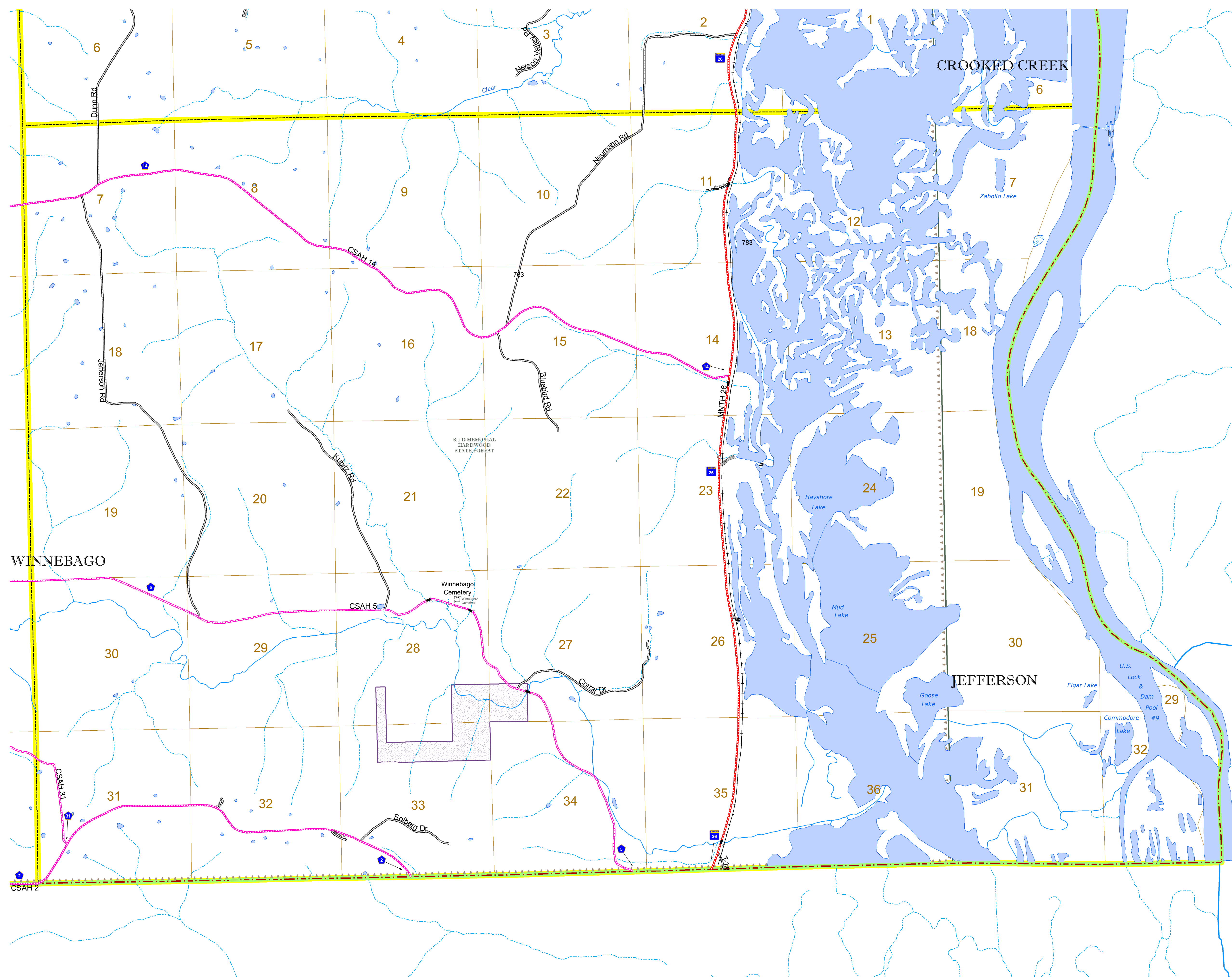


North American Datum
of 1986

ROAD AND ROADWAY FEATURES		AVIATION FEATURES	
INTERSTATE	CONCRETE	COMMERCIAL AIRPORT	GENERAL AIRPORT
US HIGHWAY	BITUMINOUS	AIRSTRIP	AIRSTRIP
MN HIGHWAY	GRAVEL	SEAPLANE	SEAPLANE
COUNTY STATE AID HIGHWAY	DIRT/UNIMPROVED	AIRPORT RUNWAY	AIRPORT RUNWAY
COUNTY ROAD	OTHER		
TOWNSHIP ROAD	UNKNOWN		
UNORGANIZED TERRITORY ROAD			
OTHER ROADS			
Municipal	RAMP OR CONNECTOR		
Native Service	INTERSTATE EXIT		
Mulvan	GREAT RIVER ROAD		
RAILROAD AND RAILWAY FEATURES		BOUNDARY FEATURES	
EMPIRE BUILDER STATION (AMTRAK)	TRIBAL LAND	STATE OF MINNESOTA	COUNTY
NORTHSTAR STATION (COMMERCE)	STATE OF MINNESOTA	MUNICIPALITY	MUNICIPALITY
		UNORGANIZED TERRITORY	FEDERAL ADJUSTED URBAN AREA (2014)
		CIVIL TOWNSHIP	CONGRESSIONAL TOWNSHIP
		SECTION	MILITARY
		VOYAGEURS NATIONAL PARK	BOUNDARY WATERS CANOE AREA WILDERNESS
		STATE PARK	REGIONAL PARK
		NATIONAL FOREST	NATIONAL AND STATE FOREST
		STATE FOREST	NATIONAL TRAIL
		WILDLIFE REFUGUE AREA	WILDLIFE MANAGEMENT AREA
		HYDROLOGIC FEATURES	HYDROLOGIC FEATURES
		RIVER OR STREAM (PERENNIAL)	LAKE, POND OR RESERVOIR
		STREAM (INTERMITTENT)	DRAINAGE DITCH
		WETLAND	ISLAND OR LAND
		REGIONAL WATERSHED	



Population (U.S. Census 2010): 129



To request information from this document in an alternative format, call 651-366-4718 or 1-800-657-3774 (Greater Minnesota); 711 or 1-800-627-3529 (Minnesota Relay). You may also send an e-mail to ADarequest.dot@state.mn.us. (Please request at least one week in advance.)