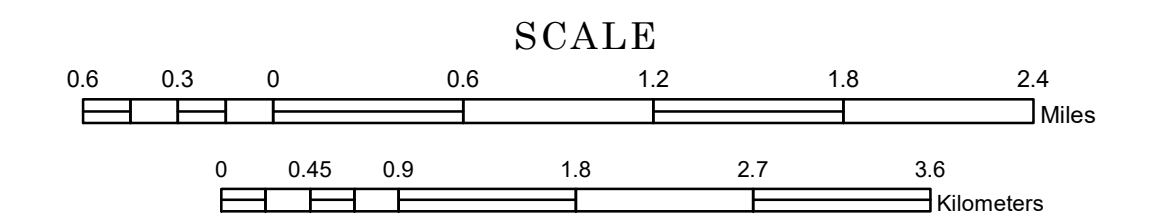


TOWNSHIP OF BALSAM

PREPARED BY THE
MINNESOTA DEPARTMENT OF TRANSPORTATION
OFFICE OF TRANSPORTATION SYSTEM MANAGEMENT

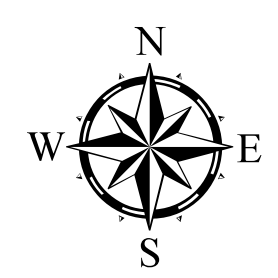
IN COOPERATION WITH
U.S. DEPARTMENT OF TRANSPORTATION
FEDERAL HIGHWAY ADMINISTRATION



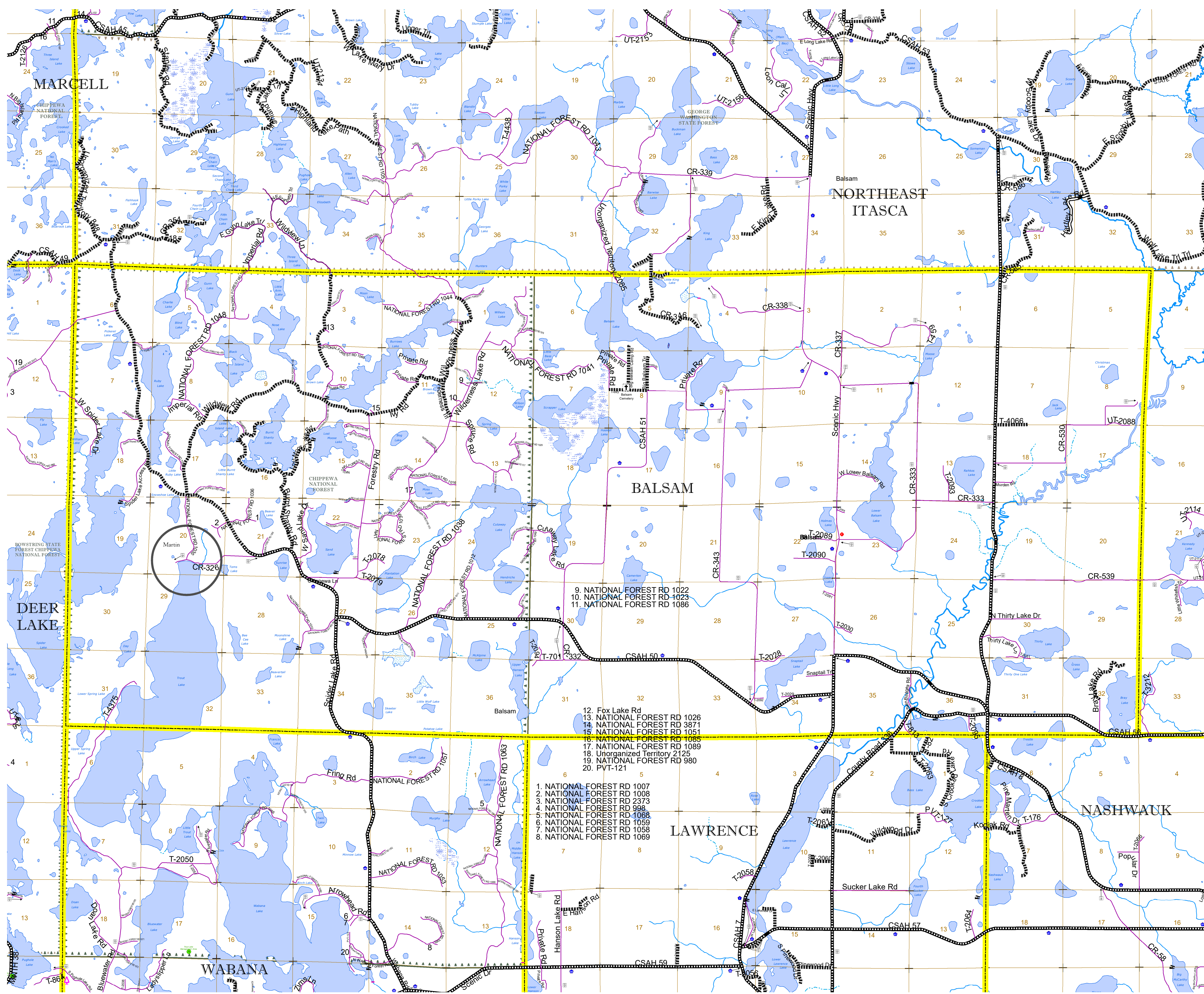
1 in = 3,200 ft

2023

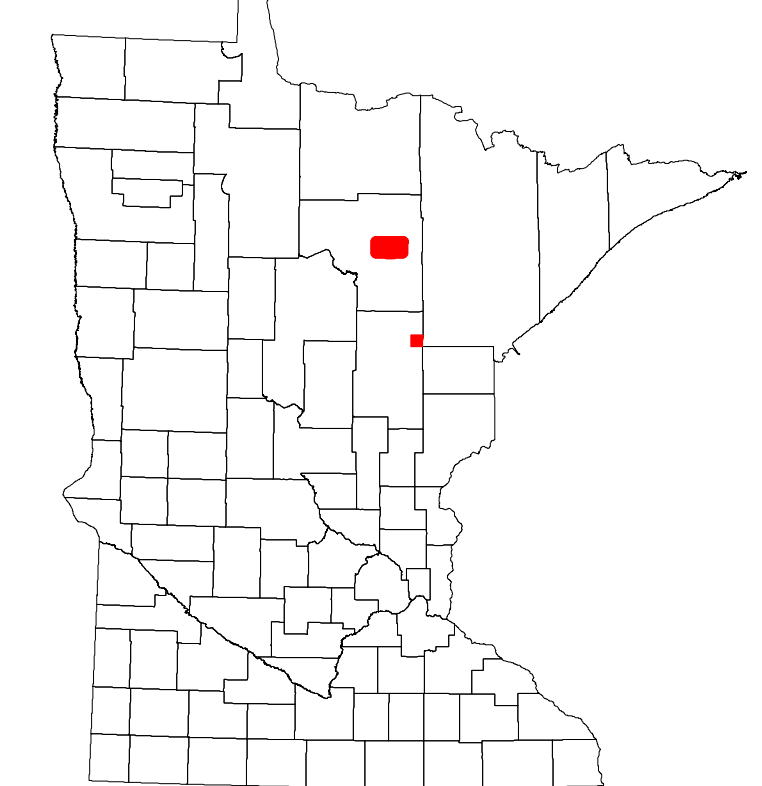
Projection:
Transverse Mercator
NAD 1986
UTM Zone 15



North American Datum
of 1986



ROAD AND ROADWAY FEATURES		AVIATION FEATURES	
INTERSTATE		COMMERCIAL AIRPORT	
US HIGHWAY		GENERAL AIRPORT	
MN HIGHWAY		AIRSTRIP	
COUNTY STATE AID HIGHWAY		SEAPLANE	
COUNTY ROAD		AIRPORT RUNWAY	
TOWNSHIP ROAD		OTHER	
UNORGANIZED TERRITORY ROAD		BOUNDARY FEATURES	
OTHER ROADS		TRIAL LAND	
Municipal		STATE OF MINNESOTA	
Private		COUNTY	
National Monument		MUNICIPALITY	
State Forest		UNORGANIZED TERRITORY	
National Park		FEDERAL ADJUSTED URBAN AREA (2014)	
National Wildlife Refuge		CIVIL TOWNSHIP	
State Game Preserve		CONGRESSIONAL TOWNSHIP	
State Park		SECTION	
RAILROAD AND RAILWAY FEATURES		MILITARY	
EMPIRE BUILDER STATION (AMTRAK)		VOYAGEURS NATIONAL PARK	
NORTHSTAR STATION (COMMTREN)		BOUNDARY WATERS CANOE AREA WILDERNESS	
LIGHT RAIL		STATE PARK	
BLUE LINE		REGIONAL PARK	
GREEN LINE		NATIONAL FOREST	
INFRASTRUCTURE FEATURES		NATIONAL AND STATE FOREST	
LONG BRIDGE (200' TO 300' SHAH)		STATE FOREST	
MAJOR BRIDGE (20' TO 200' SHAH)		NATIONAL TRAIL	
MINOR BRIDGE (5' TO 20' SHAH)		WILDLIFE REFUGE AREA	
DAM		WILDLIFE MANAGEMENT AREA	
LOCK AND DAM		FEDERAL ADJUSTED URBAN AREA (2014)	
CITY CENTERS		CIVIL TOWNSHIP	
STATE CAPITAL		CONGRESSIONAL TOWNSHIP	
COUNTY SEAT		SECTION	
CITY CENTER		MILITARY	
UNINCORPORATED COMMUNITY		VOYAGEURS NATIONAL PARK	
PUBLIC SERVICE FEATURES		BOUNDARY WATERS CANOE AREA WILDERNESS	
MNDOT OFFICE		STATE PARK	
MNDOT TRUCK STATION		REGIONAL PARK	
HIGHWAY PATROL DISTRICT OFFICE		NATIONAL FOREST	
STATE TRAVEL INFORMATION CENTER		NATIONAL AND STATE FOREST	
REST AREA (FULL SERVICE)		STATE FOREST	
REST AREA (VAULT TOILET)		NATIONAL TRAIL	
WAYSIDE (VAULT OR PVI TOILET)		WILDLIFE REFUGE AREA	
PARK AND RIDE LOT		WILDLIFE MANAGEMENT AREA	
PORT OF ENTRY		RIVER OR STREAM (PERMANENT)	
PUBLIC ACCESS POINT		LAKE, POND OR RESERVOIR	
MN STATE COLLEGE AND UNIVERSITY SYSTEM (MNSCU)		STREAM (INTERMITTENT)	
UNIVERSITY OF MN SYSTEM		DRAINAGE DITCH	
FAIRGROUNDS		WETLAND	
CULTURAL FEATURES		ISLAND OR LAND	
STATE HISTORICAL MARKER		REGIONAL WATERSHED	
HISTORIC DISTRICT			
HISTORIC SITE			
MONUMENT			



Population (U.S. Census 2010): 550

To request information from this document in an alternative format, call 651-366-4718 or 1-800-657-3774 (Greater Minnesota); 711 or 1-800-627-3529 (Minnesota Relay). You may also send an e-mail to ADAREquest.dot@state.mn.us. (Please request at least one week in advance.)