

TOWNSHIP OF EAST LAKE LILLIAN

PREPARED BY THE
MINNESOTA DEPARTMENT OF TRANSPORTATION
OFFICE OF TRANSPORTATION SYSTEM MANAGEMENT

IN COOPERATION WITH
U.S. DEPARTMENT OF TRANSPORTATION
FEDERAL HIGHWAY ADMINISTRATION



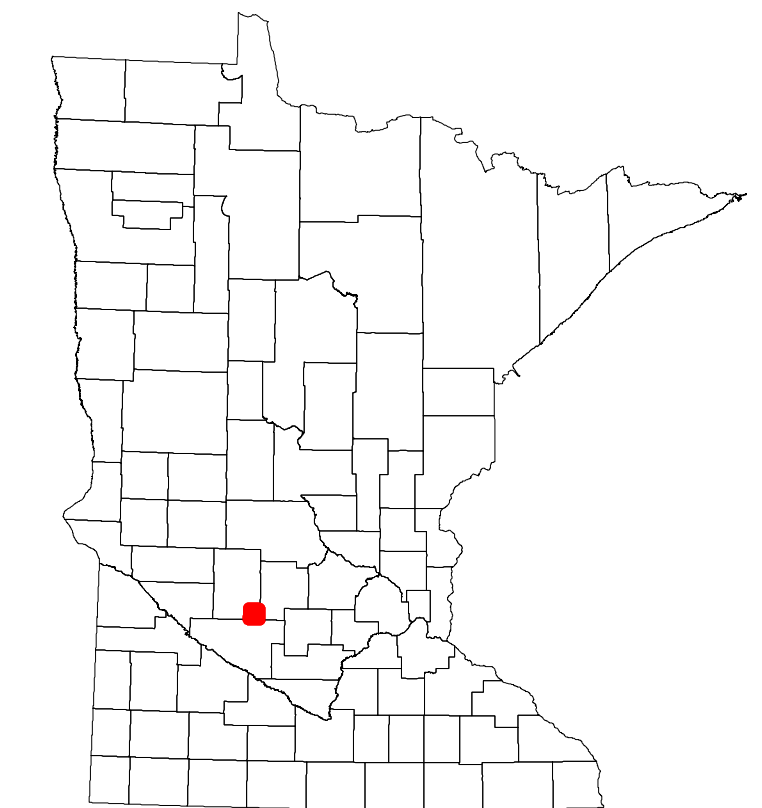
2022

Projection:
Transverse Mercator
NAD 1986
UTM Zone 15

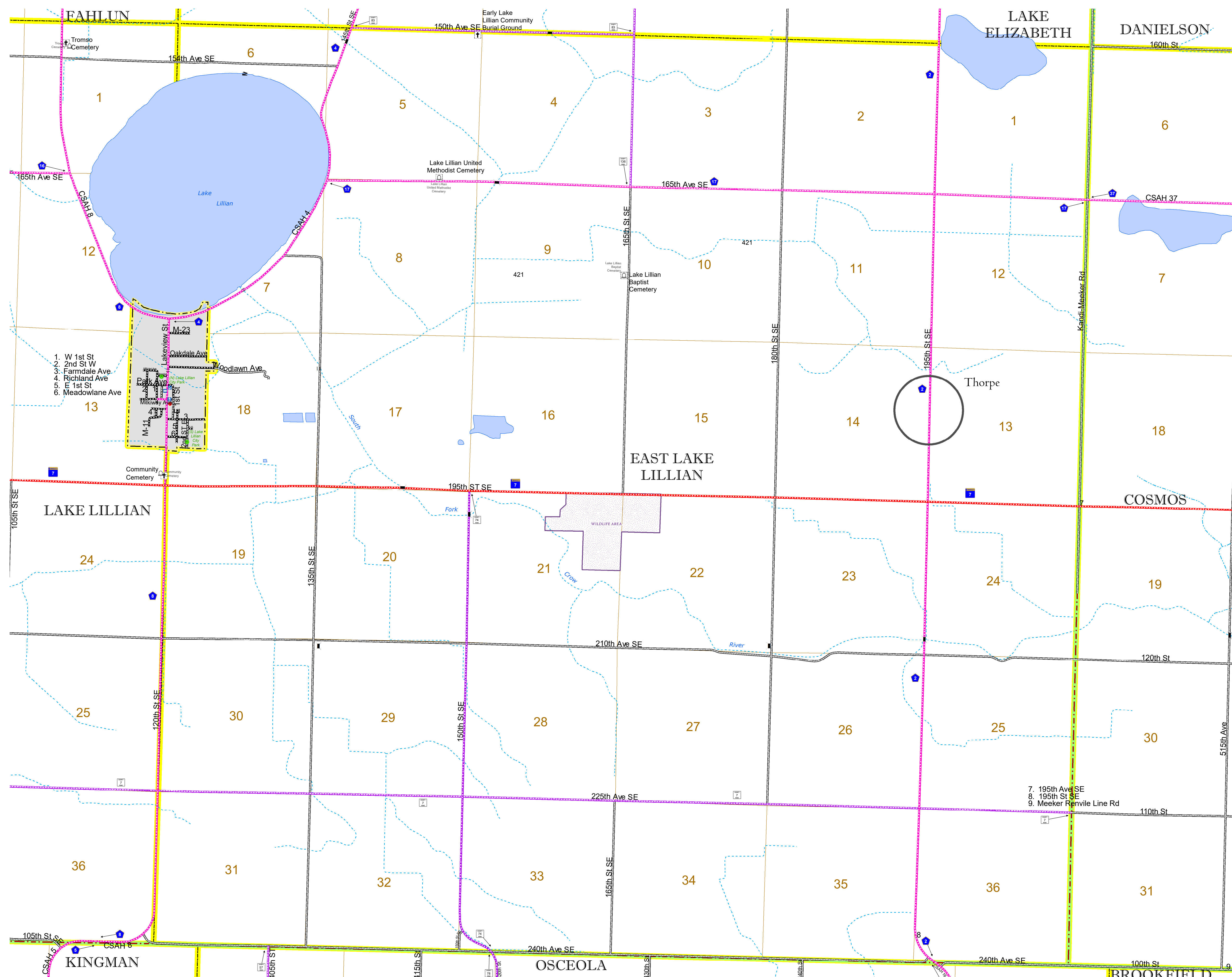


North American Datum
of 1986

ROAD AND ROADWAY FEATURES		AVIATION FEATURES	
INTERSTATE	CONCRETE	COMMERCIAL AIRPORT	GENERAL AIRPORT
US HIGHWAY	BITUMINOUS	AIRSTRIP	SEAPLANE
MN HIGHWAY	GRAVEL	AIRPORT RUNWAY	BOUNDARY FEATURES
COUNTY STATE AID HIGHWAY	DIRT/UNIMPROVED	TRIAL LAND	STATE OF MINNESOTA
COUNTY ROAD	OTHER	COUNTY	MUNICIPALITY
TOWNSHIP ROAD	UNKNOWN	UNORGANIZED TERRITORY	FEDERAL ADJUSTED URBAN AREA (2014)
UNORGANIZED TERRITORY ROAD		CIVIL TOWNSHIP	CONGRESSIONAL TOWNSHIP
OTHER ROADS		SECTION	MILITARY
Municipal	RAMP OR CONNECTOR	VOYAGEURS NATIONAL PARK	BOUNDARY WATERS CANOE AREA WILDERNESS
Private	INTERSTATE EXIT	STATE PARK	NATIONAL FOREST
Nature Service	GREAT RIVER ROAD	NATIONAL AND STATE FOREST	STATE FOREST
Mulden		NATIONAL TRAIL	NATIONAL TRAIL
		WILDLIFE REFUGE AREA	WILDLIFE MANAGEMENT AREA
		WILDLIFE REFUGE AREA	WILDLIFE MANAGEMENT AREA
		HYDROLOGIC FEATURES	HYDROLOGIC FEATURES
		RIVER OR STREAM (PERENNIAL)	LAKE, POND OR RESERVOIR
		STREAM (INTERMITTENT)	DRAINAGE DITCH
		WETLAND	ISLAND OR LAND
		REGIONAL WATERSHED	REGIONAL WATERSHED



Population (U.S. Census 2010): 199



To request information from this document in an alternative format, call 651-366-4718 or 1-800-657-3774 (Greater Minnesota); 711 or 1-800-627-3529 (Minnesota Relay). You may also send an e-mail to ADARrequest.dot@state.mn.us. (Please request at least one week in advance.)