

TOWNSHIP OF TEN MILE LAKE

PREPARED BY THE
MINNESOTA DEPARTMENT OF TRANSPORTATION
OFFICE OF TRANSPORTATION SYSTEM MANAGEMENT

IN COOPERATION WITH
U.S. DEPARTMENT OF TRANSPORTATION
FEDERAL HIGHWAY ADMINISTRATION



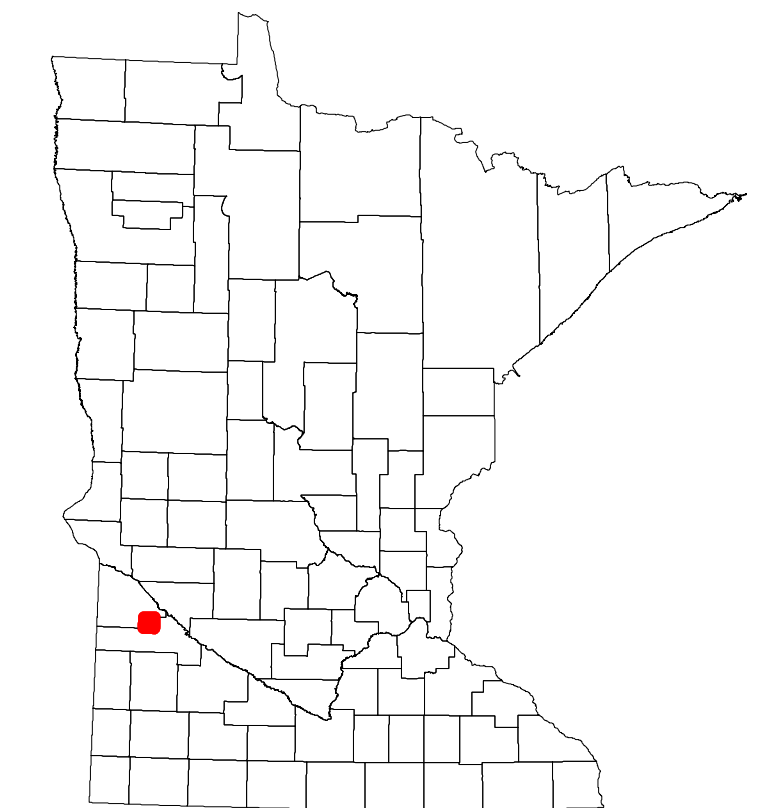
1 in = 1,600 ft
2022

Projection:
Transverse Mercator
NAD 1986
UTM Zone 15

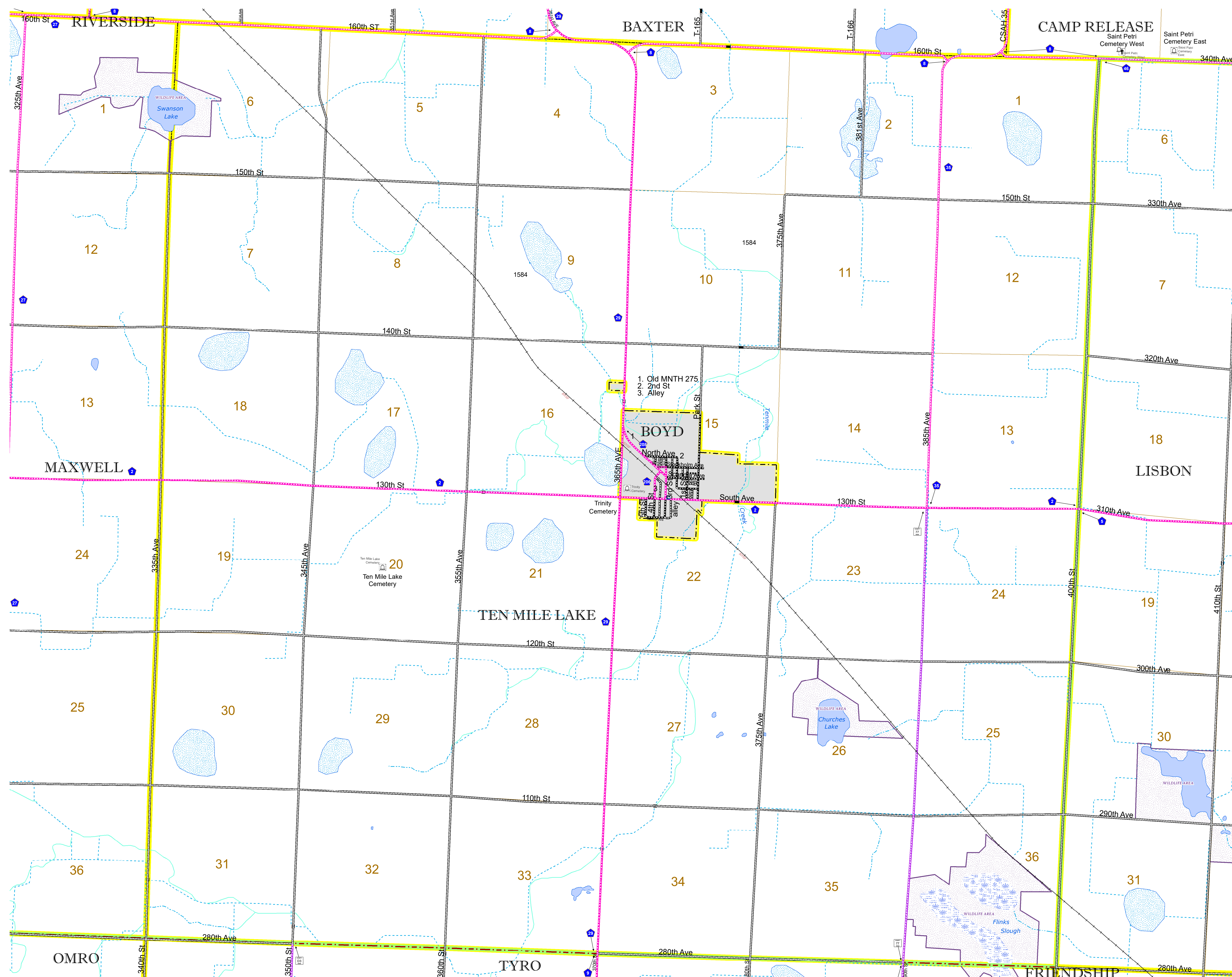


North American Datum
of 1986

ROAD AND ROADWAY FEATURES		BOUNDARY FEATURES	
INTERSTATE	CONCRETE	TRIAL LAND	TRIBAL LAND
US HIGHWAY	BITUMINOUS	STATE OF MINNESOTA	COUNTY
MN HIGHWAY	GRAVEL	MUNICIPALITY	UNINCORPORATED TOWNSHIP
COUNTY STATE AID HIGHWAY	DIRT/UNIMPROVED	UNINCORPORATED TOWNSHIP	CIVIL TOWNSHIP
COUNTY ROAD	OTHER	FEDERAL ADJUSTED URBAN AREA (2014)	CIVIL TOWNSHIP
TOWNSHIP ROAD	UNKNOWN	CONGRESSIONAL TOWNSHIP	SECTION
UNORGANIZED TERRITORY ROAD		MILITARY	VOYAGEURS NATIONAL PARK
OTHER ROADS			BOUNDARY WATERS CANOE AREA WILDERNESS
Municipal	RAMP OR CONNECTOR		STATE PARK
Private	INTERSTATE EXIT		REGIONAL PARK
National Monument	GREAT RIVER ROAD		NATIONAL FOREST
Nature Service			NATIONAL AND STATE FOREST
Museum			STATE FOREST
			WILDLIFE REFUGUE AREA
			WILDLIFE MANAGEMENT AREA
			HYDROLOGIC FEATURES
			RIVER OR STREAM (PERMANENT)
			LAKE, POND OR RESERVOIR
			STREAM (INTERMITTENT)
			DRAINAGE DITCH
			WETLAND
			ISLAND OR LAND
			REGIONAL WATERSHED



Population (U.S. Census 2010): 153



To request information from this document in an alternative format, call 651-366-4718 or 1-800-657-3774 (Greater Minnesota); 711 or 1-800-627-3529 (Minnesota Relay). You may also send an e-mail to ADArequest.dot@state.mn.us. (Please request at least one week in advance.)