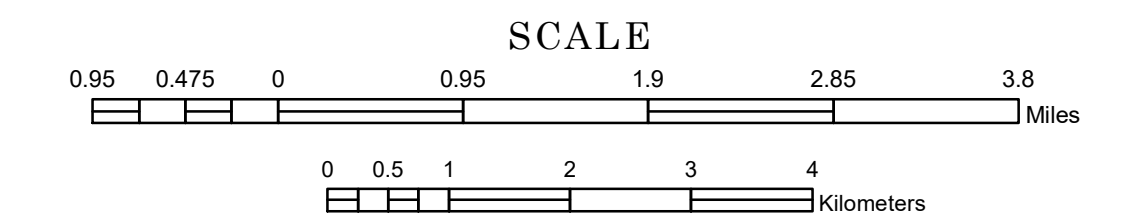


# TOWNSHIP OF BEAVER BAY

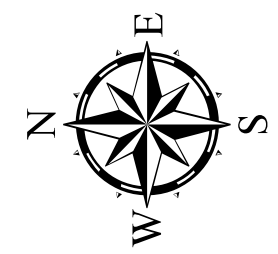
PREPARED BY THE  
MINNESOTA DEPARTMENT OF TRANSPORTATION  
OFFICE OF TRANSPORTATION SYSTEM MANAGEMENT

IN COOPERATION WITH  
U.S. DEPARTMENT OF TRANSPORTATION  
FEDERAL HIGHWAY ADMINISTRATION



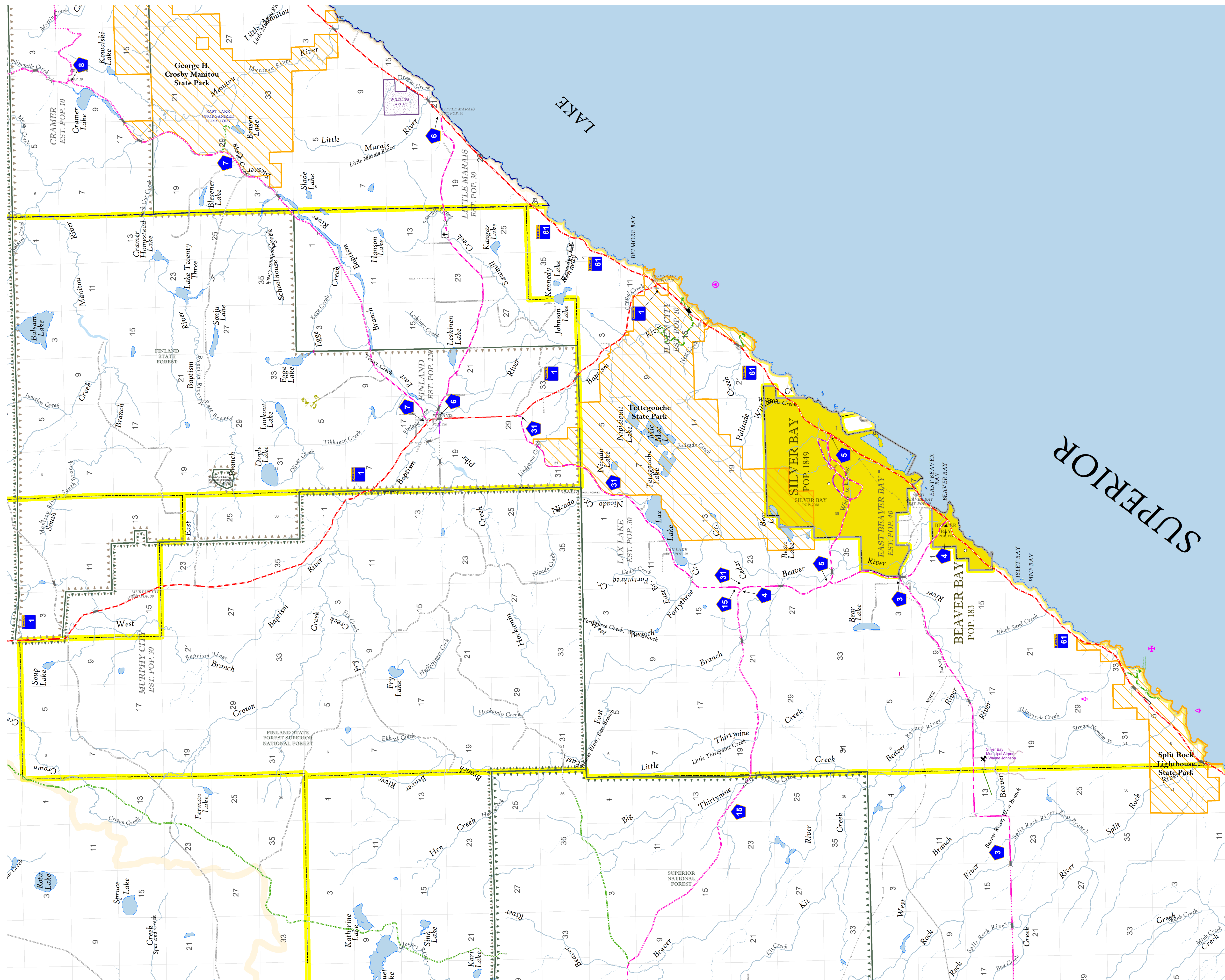
1 in = 5,200 ft

2022

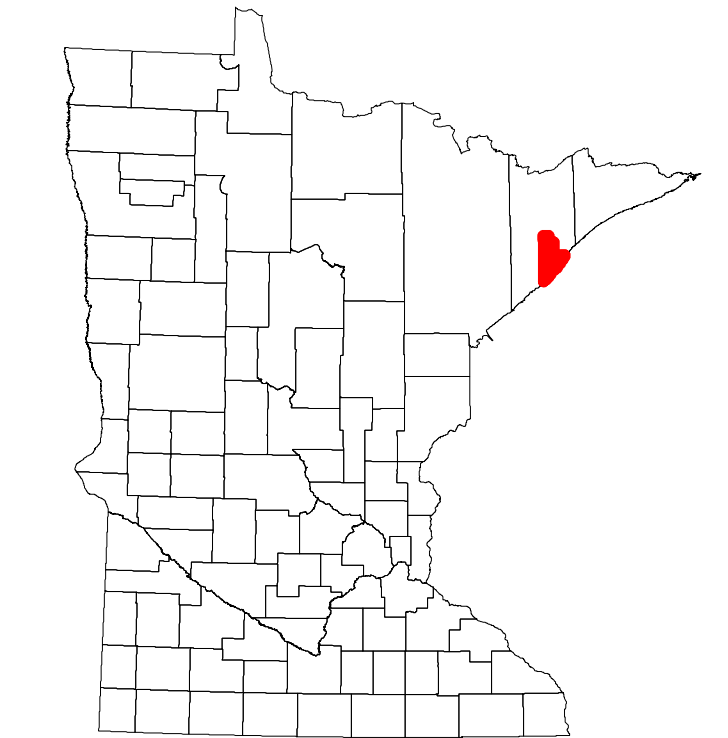


Projection:  
Transverse Mercator  
NAD 1986  
UTM Zone 15

North American Datum  
of 1986



ROAD AND ROADWAY FEATURES		PUBLIC SERVICE FEATURES	
INTERSTATE	[Symbol]	MNDOT OFFICE	[Symbol]
UNITED STATES HIGHWAY	[Symbol]	MNDOT TRUCK STATION	[Symbol]
MINNESOTA TRUNK HIGHWAY	[Symbol]	HIGHWAY PATROL DISTRICT OFFICE	[Symbol]
COUNTY STATE AID HIGHWAY	[Symbol]	STATE TRAVEL INFORMATION CENTER	[Symbol]
COUNTY ROAD	[Symbol]	REST AREA (Full Service)	[Symbol]
MUNICIPAL STATE AID STREET	[Symbol]	REST AREA (Fast Truck)	[Symbol]
MUNICIPAL STREET	[Symbol]	WAYSIDE (Walk or Pr. Trail)	[Symbol]
PRIVATE STREET/ROAD	[Symbol]	LOCAL PARK	[Symbol]
TOWNSHIP ROAD	[Symbol]	PUBLIC ACCESS POINT	[Symbol]
UNORGANIZED TERRITORY ROAD	[Symbol]	FAIRGROUNDS	[Symbol]
INDIAN SERVICE ROAD	[Symbol]	PORT OF ENTRY	[Symbol]
RAMP OR CONNECTOR	[Symbol]	PARK AND RIDE LOT	[Symbol]
INTERSTATE EXIT	[Symbol]	PUBLIC UNIVERSITY OR COLLEGE	[Symbol]
GREAT RIVER ROAD	[Symbol]	TOWN HALL	[Symbol]
OTHER ROADS	[Symbol]	ARMORY	[Symbol]
Native Path	[Symbol]	CULTURAL FEATURES	[Symbol]
Arroyo	[Symbol]	STATE HISTORICAL MARKER	[Symbol]
Other Road	[Symbol]	HISTORIC DISTRICT	[Symbol]
		HISTORIC SITE	[Symbol]
		MONUMENT	[Symbol]
		BOUNDARY FEATURES	[Symbol]
		TRIBAL LAND	[Symbol]
		COUNTY	[Symbol]
		MUNICIPALITY	[Symbol]
		ADJACENT MUNICIPALITY	[Symbol]
		FEDERAL ADJUSTED URBAN AREA (2014)	[Symbol]
		MILITARY	[Symbol]
		VOYAGEUR'S NATIONAL PARK	[Symbol]
		BOUNDARY WATERS CANADA WILDERNESS	[Symbol]
		STATE PARK	[Symbol]
		REGIONAL PARK	[Symbol]
		NATIONAL FOREST	[Symbol]
		NATIONAL AND STATE FOREST	[Symbol]
		STATE FOREST	[Symbol]
		NATIONAL TRAIL	[Symbol]
		WILDLIFE REFUGUE AREA	[Symbol]
		WILDLIFE MANAGEMENT AREA	[Symbol]
		HYDROLOGIC FEATURES	[Symbol]
		RIVER OR STREAM (Perennial)	[Symbol]
		LAKE, POND OR RESERVOIR	[Symbol]
		STREAM (Intermittent)	[Symbol]
		DRAINAGE DITCH	[Symbol]
		WETLAND	[Symbol]
		ISLAND OR LAND	[Symbol]
		REGIONAL WATERSHED	[Symbol]



Population (U.S. Census 2010): 473

To request information from this document in an alternative format, call 651-366-4718 or 1-800-657-3774 (Greater Minnesota); 711 or 1-800-627-3529 (Minnesota Relay). You may also send an e-mail to ADARquest.dot@state.mn.us. (Please request at least one week in advance.)