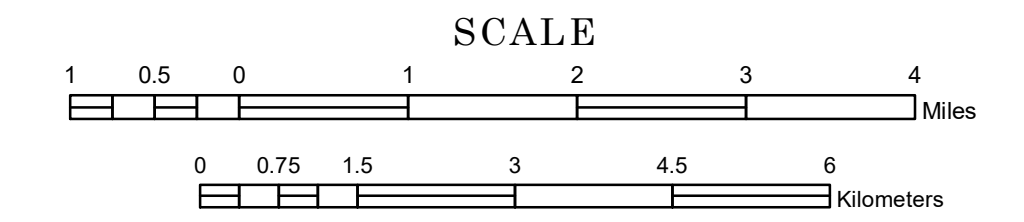


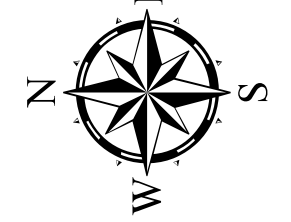
TOWNSHIP OF SILVER CREEK

PREPARED BY THE
MINNESOTA DEPARTMENT OF TRANSPORTATION
OFFICE OF TRANSPORTATION SYSTEM MANAGEMENT

IN COOPERATION WITH
U.S. DEPARTMENT OF TRANSPORTATION
FEDERAL HIGHWAY ADMINISTRATION

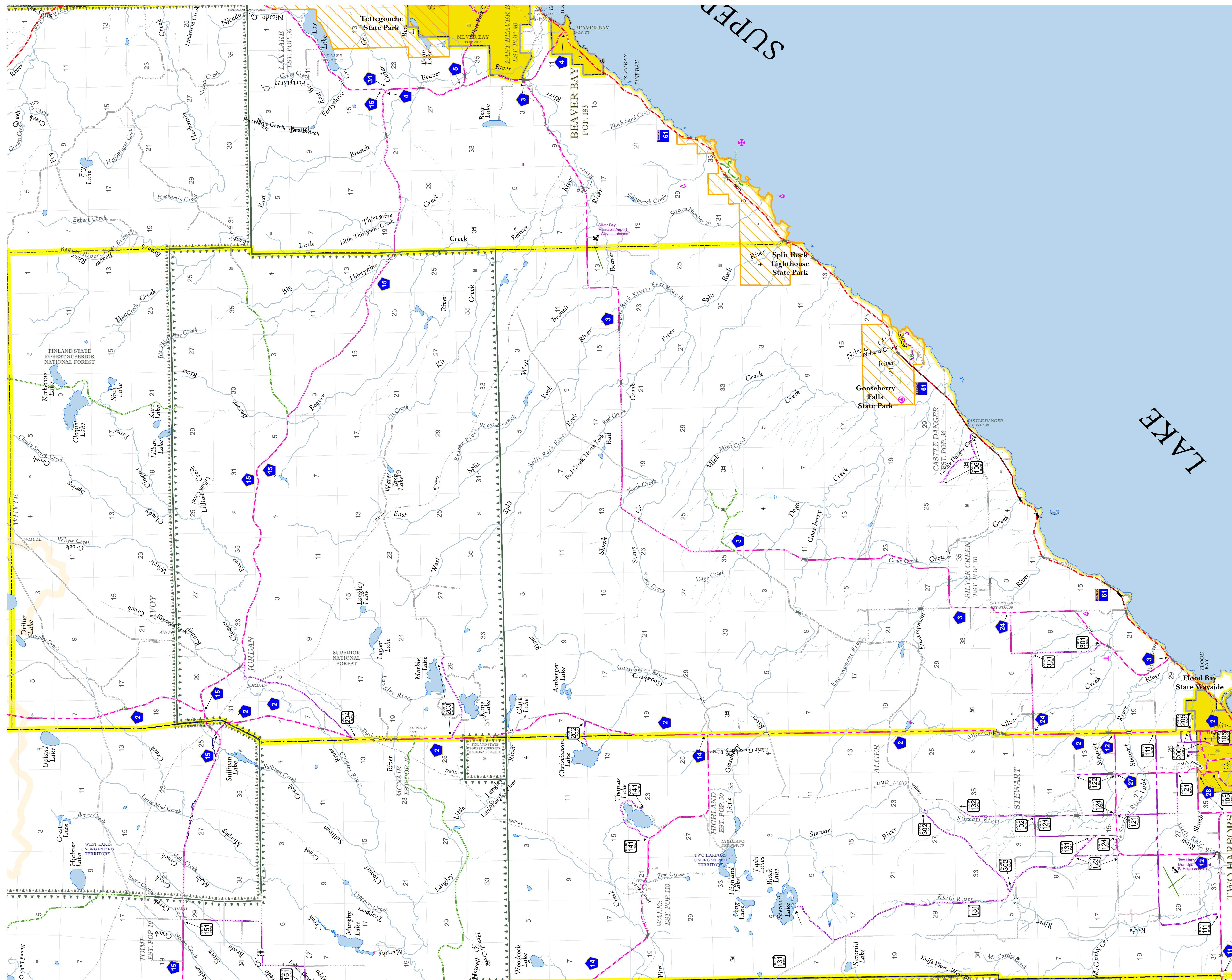


2022

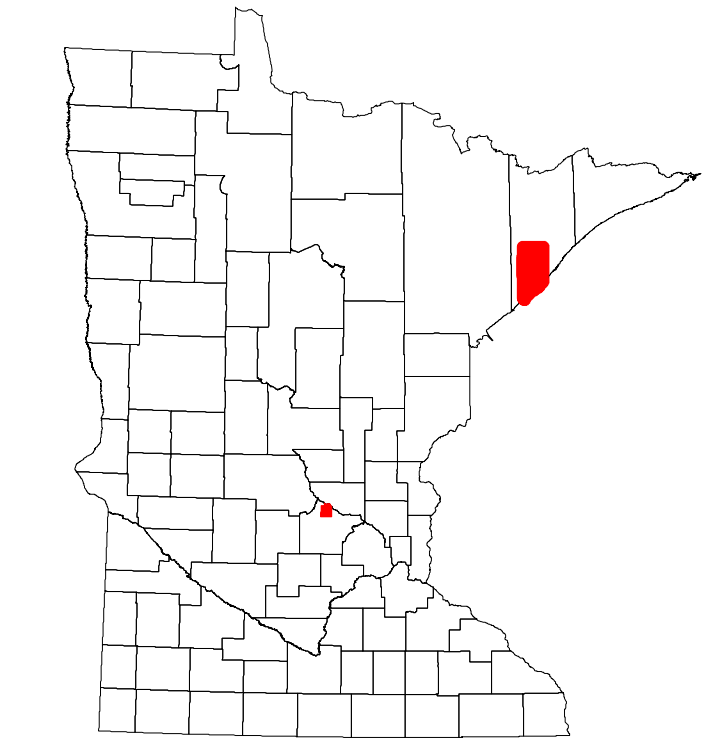


Projection:
Transverse Mercator
NAD 1986
UTM Zone 15

North American Datum
of 1986



ROAD AND ROADWAY FEATURES		PUBLIC SERVICE FEATURES	
INTERSTATE	[Symbol]	MNDOT OFFICE	[Symbol]
UNITED STATES HIGHWAY	[Symbol]	MNDOT TRUCK STATION	[Symbol]
MINNESOTA TRUNK HIGHWAY	[Symbol]	HIGHWAY PATROL DISTRICT OFFICE	[Symbol]
COUNTY STATE AID HIGHWAY	[Symbol]	STATE TRAVEL INFORMATION CENTER	[Symbol]
COUNTY ROAD	[Symbol]	REST AREA (Full Service)	[Symbol]
MUNICIPAL STATE AID STREET	[Symbol]	REST AREA (Fast Food)	[Symbol]
MUNICIPAL STREET	[Symbol]	WAYSIDE (Walk or Pr. Trail)	[Symbol]
PRIVATE STREET/ROAD	[Symbol]	PUBLIC ACCESS POINT	[Symbol]
TOWNSHIP ROAD	[Symbol]	FARMSHOULDS	[Symbol]
UNORGANIZED TERRITORY ROAD	[Symbol]	PORT OF ENTRY	[Symbol]
INDIAN SERVICE ROAD	[Symbol]	PARK AND RIDE LOT	[Symbol]
RAMP OR CONNECTOR	[Symbol]	PUBLIC UNIVERSITY OR COLLEGE	[Symbol]
INTERSTATE EXIT	[Symbol]	TOWN HALL	[Symbol]
GREAT RIVER ROAD	[Symbol]	ARMORY	[Symbol]
OTHER ROADS	[Symbol]		
Norway Park	[Symbol]		
Amor	[Symbol]		
Other Paved	[Symbol]		
Concrete	[Symbol]		
Bituminous	[Symbol]		
Gravel	[Symbol]		
Dirt/Unimproved	[Symbol]		
Unknown	[Symbol]		
Commercial Airport	[Symbol]		
General Airport	[Symbol]		
Arbstrip	[Symbol]		
Seaplane	[Symbol]		
Airport Runway	[Symbol]		
Railroad and Railway Features			
Railway	[Symbol]		
Passenger Train Station	[Symbol]		
Light Rail Station	[Symbol]		
Infrastructure Features			
Long Bridge (300' or Greater Span)	[Symbol]		
Major Bridge (20' to 300' Span)	[Symbol]		
Minor Bridge (5' to 20' Span)	[Symbol]		
Dam	[Symbol]		
Lock and Dam	[Symbol]		
City Centers			
Tribal Government Center	[Symbol]		
City Center	[Symbol]		
Locally Known Place	[Symbol]		
Uncorporated Community	[Symbol]		
MNDOT Office	[Symbol]		
MNDOT Truck Station	[Symbol]		
Highway Patrol District Office	[Symbol]		
State Travel Information Center	[Symbol]		
Rest Area (Full Service)	[Symbol]		
Rest Area (Fast Food)	[Symbol]		
Wayside (Walk or Pr. Trail)	[Symbol]		
Public Access Point	[Symbol]		
Farmsholds	[Symbol]		
Port of Entry	[Symbol]		
Park and Ride Lot	[Symbol]		
Public University or College	[Symbol]		
Town Hall	[Symbol]		
Armory	[Symbol]		
Cultural Features			
State Historical Marker	[Symbol]		
Historic District	[Symbol]		
Historic Site	[Symbol]		
Monument	[Symbol]		
Boundary Features			
Tribal Land	[Symbol]		
County	[Symbol]		
Municipality	[Symbol]		
Adjacent Municipality	[Symbol]		
Federal Adjusted Urban Area (2014)	[Symbol]		
Military	[Symbol]		
Voyageurs National Park	[Symbol]		
Boundary Waters Canoe Area Wilderness	[Symbol]		
State Park	[Symbol]		
Regional Park	[Symbol]		
National Forest	[Symbol]		
National and State Forest	[Symbol]		
State Forest	[Symbol]		
National Trail	[Symbol]		
Wildlife Refuge Area	[Symbol]		
Wildlife Management Area	[Symbol]		
Hydrologic Features			
River or Stream (Perennial)	[Symbol]		
Lake, Pond or Reservoir	[Symbol]		
Stream (Intermittent)	[Symbol]		
Drainage Ditch	[Symbol]		
Wetland	[Symbol]		
Island or Land	[Symbol]		
Regional Watershed	[Symbol]		



To request information from this document in an alternative format, call 651-366-4718 or 1-800-657-3774 (Greater Minnesota); 711 or 1-800-627-3529 (Minnesota Relay). You may also send an e-mail to ADRequest.dot@state.mn.us. (Please request at least one week in advance.)