

TOWNSHIP OF CUSTER

PREPARED BY THE
MINNESOTA DEPARTMENT OF TRANSPORTATION
OFFICE OF TRANSPORTATION SYSTEM MANAGEMENT

IN COOPERATION WITH
U.S. DEPARTMENT OF TRANSPORTATION
FEDERAL HIGHWAY ADMINISTRATION



1 in = 1,600 ft

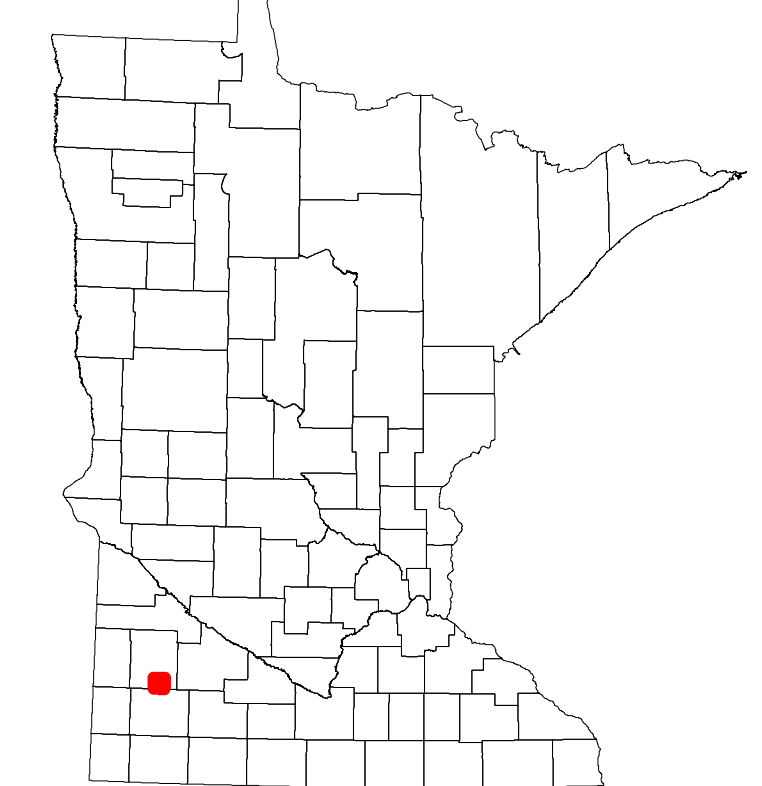
2023

Projection:
Transverse Mercator
NAD 1986
UTM Zone 15

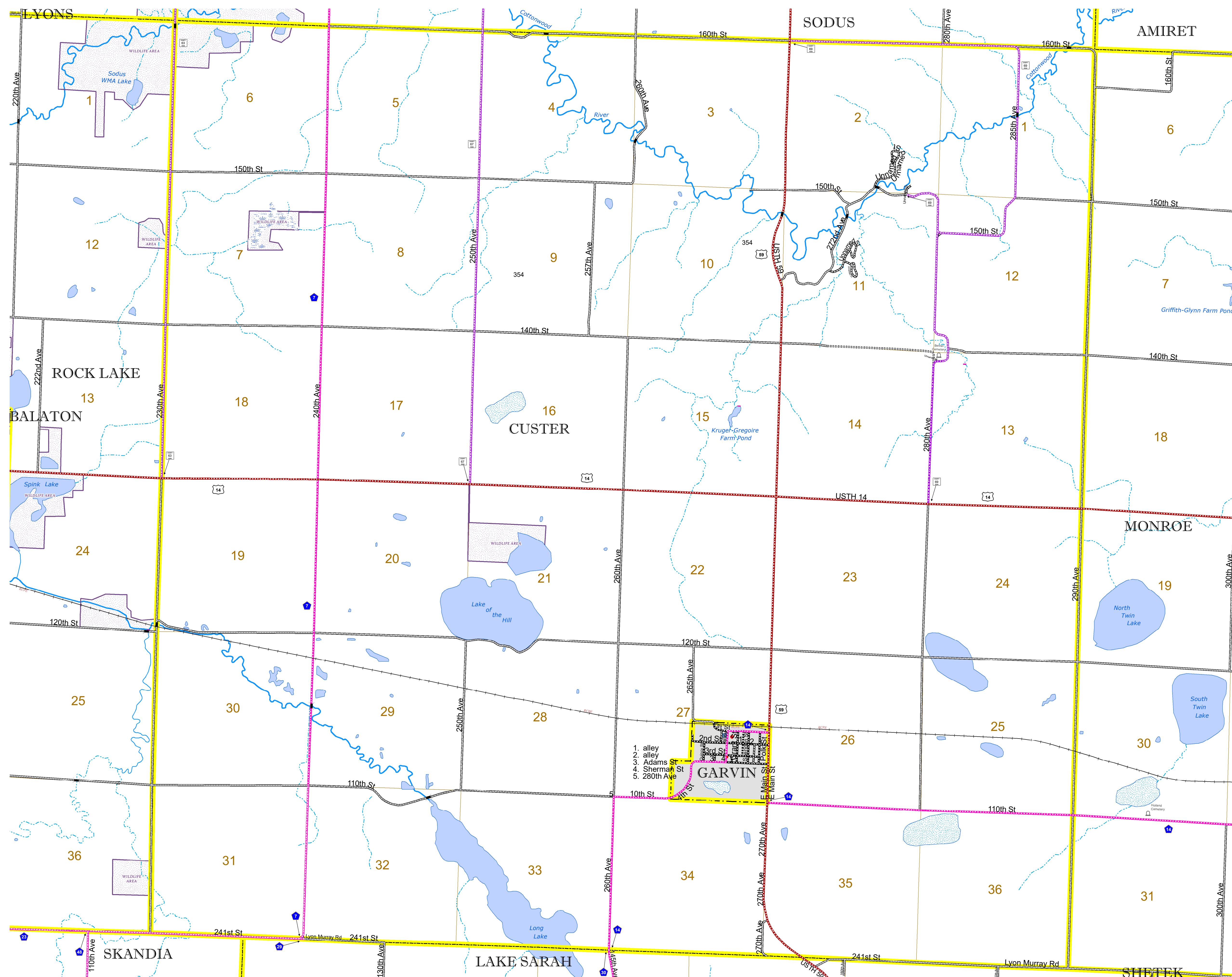


North American Datum
of 1986

ROAD AND ROADWAY FEATURES	
INTERSTATE	CONCRETE
US HIGHWAY	BITUMINOUS
MN HIGHWAY	GRAVEL
COUNTY STATE AID HIGHWAY	DIRT/UNIMPROVED
COUNTY ROAD	OTHER
TOWNSHIP ROAD	UNKNOWN
UNORGANIZED TERRITORY ROAD	
OTHER ROADS	RAMP OR CONNECTOR
Municipal	INTERSTATE EXIT
Private	AVIATION FEATURES
National Monument	COMMERCIAL AIRPORT
State Forest	GENERAL AIRPORT
National Wildlife Refuge	AIRSTRIP
State Game Preserve	SEAPLANE
	AIRPORT RUNWAY
RAILROAD AND RAILWAY FEATURES	
EMPIRE BUILDER STATION (AMTRAK)	TRIBAL LAND
NORTHSTAR STATION (COMPUTER)	STATE OF MINNESOTA
LIGHT RAIL	COUNTY
BLUE LINE	MUNICIPALITY
GREEN LINE	UNORGANIZED TERRITORY
INFRASTRUCTURE FEATURES	
LONG BRIDGE (200' or Greater Span)	FEDERAL ADJUSTED URBAN AREA (2014)
MAJOR BRIDGE (20' to 200' Span)	CIVIL TOWNSHIP
MINOR BRIDGE (5' to 20' Span)	CONGRESSIONAL TOWNSHIP
DAM	SECTION
LOCK AND DAM	MILITARY
CITY CENTERS	
STATE CAPITAL	VOYAGEURS NATIONAL PARK
COUNTY SEAT	BOUNDARY WATERS CANOE AREA WILDERNESS
CITY CENTER	STATE PARK
UNINCORPORATED COMMUNITY	REGIONAL PARK
PUBLIC SERVICE FEATURES	
MNDOT OFFICE	NATIONAL FOREST
MNDOT TRUCK STATION	NATIONAL AND STATE FOREST
HIGHWAY PATROL DISTRICT OFFICE	STATE FOREST
STATE TRAVEL INFORMATION CENTER	WILDLIFE REFUGUE AREA
REST AREA (Full Service)	WILDLIFE MANAGEMENT AREA
REST AREA (Vault Toilet)	HYDROLOGIC FEATURES
WAYSIDE (Vault or Pit Toilet)	RIVER OR STREAM (Perennial)
PARK AND RIDE LOT	LAKE, POND OR RESERVOIR
PORT OF ENTRY	STREAM (Intermittent)
PUBLIC ACCESS POINT	DRAINAGE DITCH
MN STATE COLLEGE AND UNIVERSITY SYSTEM (MNSCU)	WETLAND
UNIVERSITY OF MN SYSTEM	ISLAND OR LAND
FAIRGROUNDS	REGIONAL WATERSHED
CULTURAL FEATURES	
STATE HISTORICAL MARKER	
HISTORIC DISTRICT	
HISTORIC SITE	
MONUMENT	



Population (U.S. Census 2010): 203



1. alley
2. alley
3. Adams St
4. Sherman St
5. 280th Ave

To request information from this document in an alternative format, call 651-366-4718 or 1-800-657-3774 (Greater Minnesota); 711 or 1-800-627-3529 (Minnesota Relay). You may also send an e-mail to ADRequest.dot@state.mn.us. (Please request at least one week in advance.)