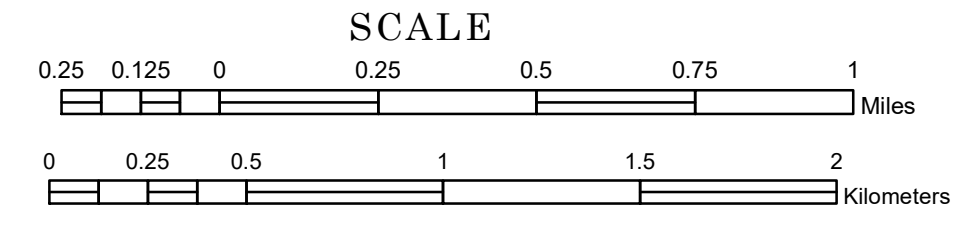


TOWNSHIP OF ALMA

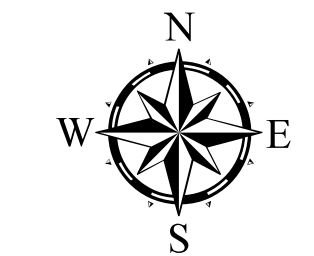
PREPARED BY THE
MINNESOTA DEPARTMENT OF TRANSPORTATION
OFFICE OF TRANSPORTATION SYSTEM MANAGEMENT

IN COOPERATION WITH
U.S. DEPARTMENT OF TRANSPORTATION
FEDERAL HIGHWAY ADMINISTRATION

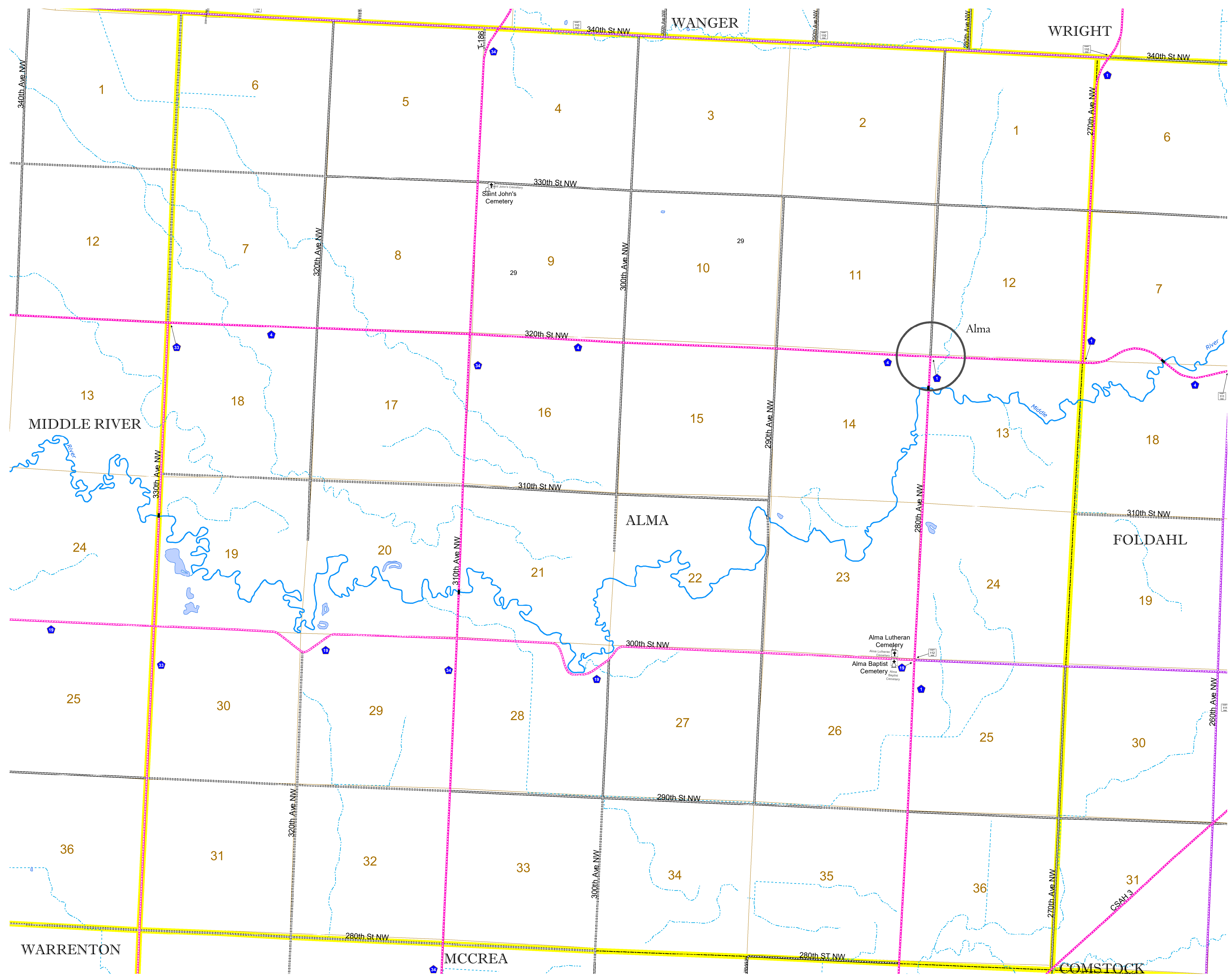


2022

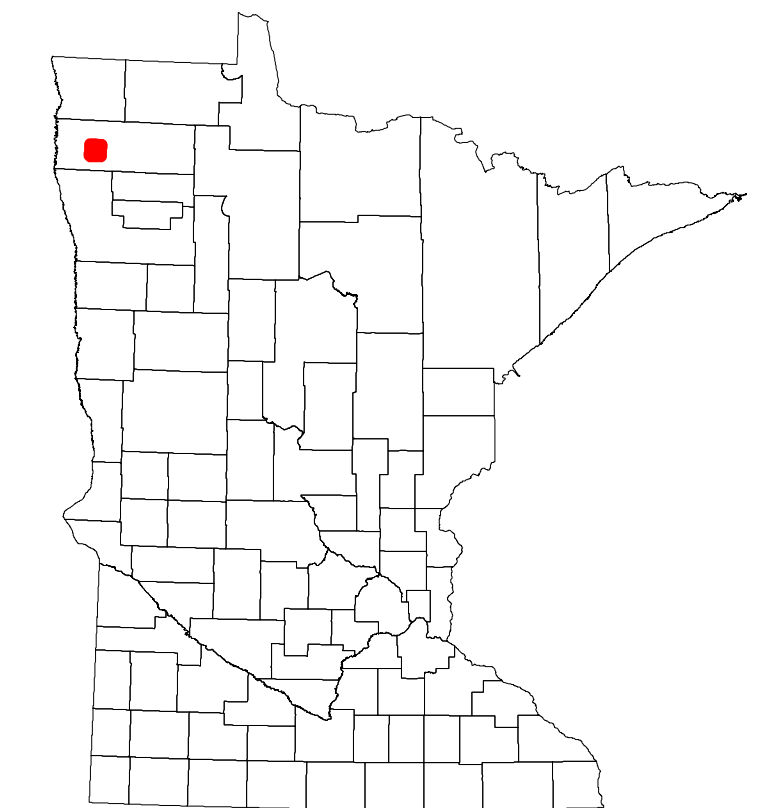
Projection:
Transverse Mercator
NAD 1986
UTM Zone 15



North American Datum
of 1986



ROAD AND ROADWAY FEATURES		BOUNDARY FEATURES	
INTERSTATE	CONCRETE	TRIBAL LAND	STATE OF MINNESOTA
US HIGHWAY	BITUMINOUS	COUNTY	MUNICIPALITY
MN HIGHWAY	GRAVEL	UNORGANIZED TERRITORY	FEDERAL ADJUSTED URBAN AREA (2014)
COUNTY STATE AID HIGHWAY	DIRT/UNIMPROVED	CIVIL TOWNSHIP	CONGRESSIONAL TOWNSHIP
COUNTY ROAD	OTHER	SECTION	MILITARY
TOWNSHIP ROAD	UNKNOWN	VOYAGEURS NATIONAL PARK	BOUNDARY WATERS CANOE AREA WILDERNESS
UNORGANIZED TERRITORY ROAD		STATE PARK	REGIONAL PARK
OTHER ROADS		NATIONAL FOREST	NATIONAL AND STATE FOREST
Municipal	RAMP OR CONNECTOR	STATE FOREST	WILDLIFE REFUGE AREA
Private	INTERSTATE EXIT	NATIONAL TRAIL	WILDLIFE MANAGEMENT AREA
National Monument		WILDLIFE REFUGES	HYDROLOGIC FEATURES
National Wildlife Refuge		WILDLIFE REFUGES	RIVER OR STREAM (PERMANENT)
State Game Preserve		WILDLIFE REFUGES	LAKE, POND OR RESERVOIR
		WILDLIFE REFUGES	STREAM (INTERMITTENT)
		WILDLIFE REFUGES	DRAINAGE DITCH
		WILDLIFE REFUGES	WETLAND
		WILDLIFE REFUGES	ISLAND OR LAND
		WILDLIFE REFUGES	REGIONAL WATERSHED



Population (U.S. Census 2010): 88

To request information from this document in an alternative format, call 651-366-4718 or 1-800-657-3774 (Greater Minnesota); 711 or 1-800-627-3529 (Minnesota Relay). You may also send an e-mail to ADRequest.dot@state.mn.us. (Please request at least one week in advance.)