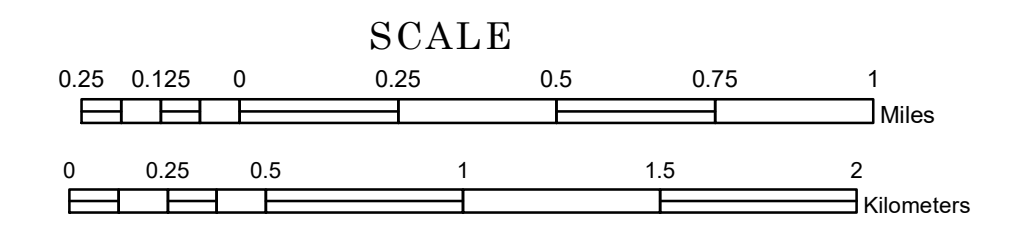


TOWNSHIP OF RANSOM

PREPARED BY THE
MINNESOTA DEPARTMENT OF TRANSPORTATION
OFFICE OF TRANSPORTATION SYSTEM MANAGEMENT

IN COOPERATION WITH
U.S. DEPARTMENT OF TRANSPORTATION
FEDERAL HIGHWAY ADMINISTRATION

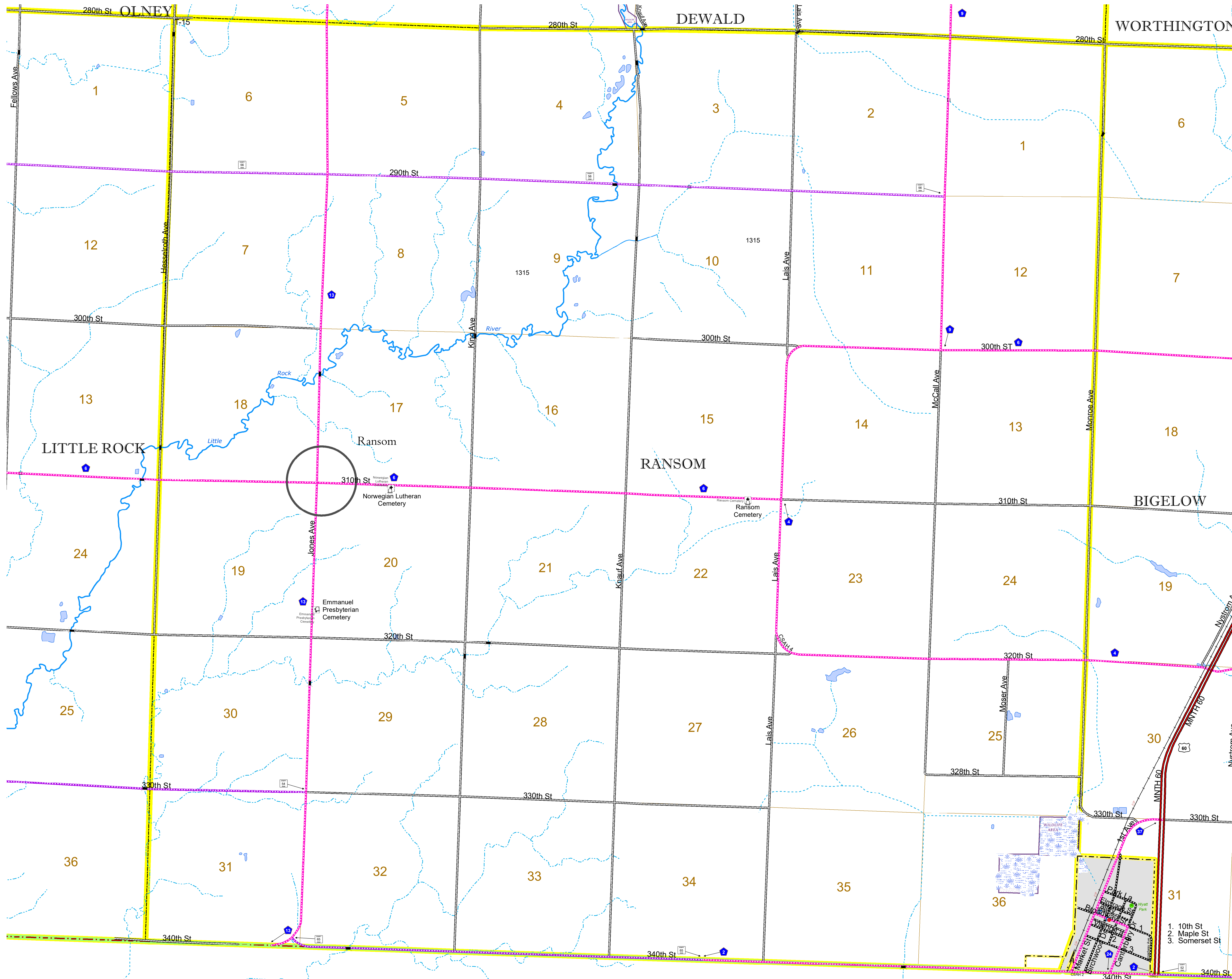


2022

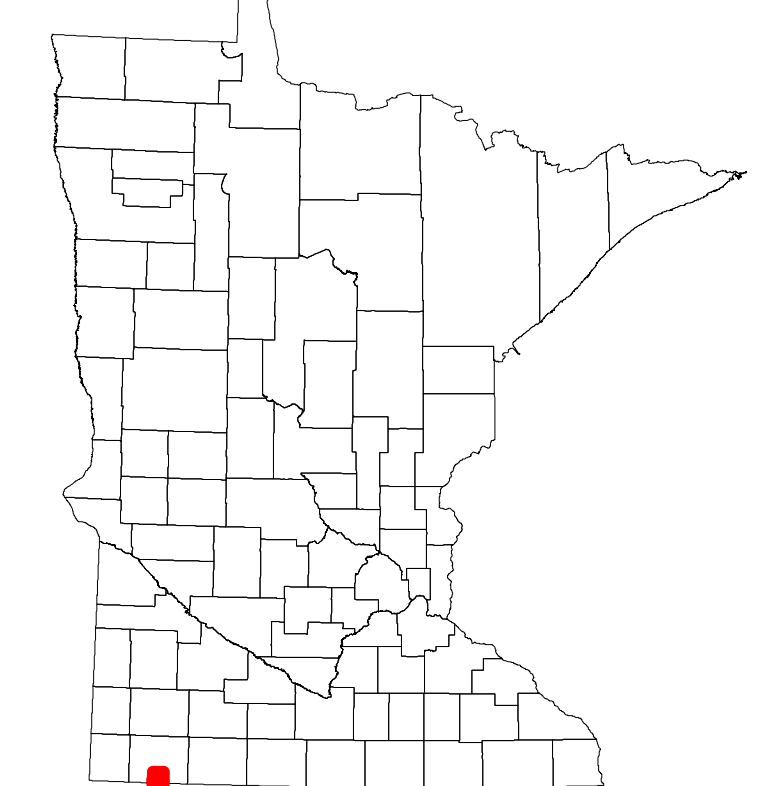
Projection:
Transverse Mercator
NAD 1986
UTM Zone 15



North American Datum
of 1986



ROAD AND ROADWAY FEATURES		BOUNDARY FEATURES	
INTERSTATE	CONCRETE	TRIBAL LAND	STATE OF MINNESOTA
US HIGHWAY	BITUMINOUS	COUNTY	MUNICIPALITY
MN HIGHWAY	GRAVEL	UNORGANIZED TERRITORY	FEDERAL ADJUSTED URBAN AREA (2014)
COUNTY STATE AID HIGHWAY	DIRT/UNIMPROVED	CIVIL TOWNSHIP	CONGRESSIONAL TOWNSHIP
COUNTY ROAD	OTHER	SECTION	MILITARY
TOWNSHIP ROAD	UNKNOWN	VOYAGEURS NATIONAL PARK	BOUNDARY WATERS CANOE AREA WILDERNESS
UNORGANIZED TERRITORY ROAD		STATE PARK	NATIONAL FOREST
OTHER ROADS		NATIONAL AND STATE FOREST	STATE FOREST
Municipal	RAMP OR CONNECTOR	WILDLIFE REFUGUE AREA	WILDLIFE MANAGEMENT AREA
Private	INTERSTATE EXIT	HYDROLOGIC FEATURES	RIVER OR STREAM (PERENNIAL)
National Monument	AVIATION FEATURES	LAKE, POND OR RESERVOIR	STREAM (INTERMITTENT)
National Wildlife Refuge	GENERAL AIRPORT	DRAINAGE DITCH	WETLAND
State Game Preserve	AIRSTRIP	HISTORIC DISTRICT	ISLAND OR LAND MONUMENT
State Park	SEAPLANE	HISTORIC SITE	REGIONAL WATERSHED
Preserve	AIRPORT RUNWAY		



Population (U.S. Census 2010): 230

To request information from this document in an alternative format, call 651-366-4718 or 1-800-657-3774 (Greater Minnesota); 711 or 1-800-627-3529 (Minnesota Relay). You may also send an e-mail to ADAREquest.dot@state.mn.us. (Please request at least one week in advance.)