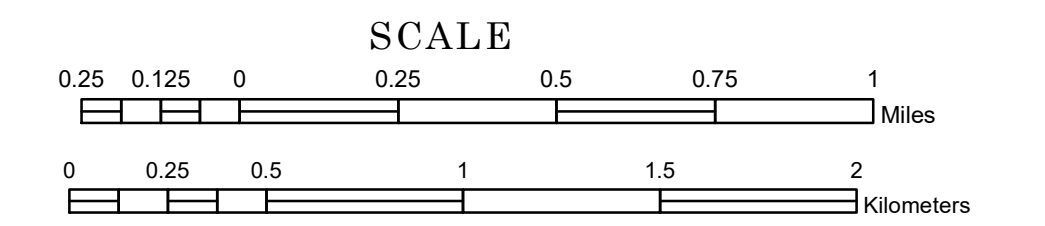


TOWNSHIP OF WAUKON

PREPARED BY THE
MINNESOTA DEPARTMENT OF TRANSPORTATION
OFFICE OF TRANSPORTATION SYSTEM MANAGEMENT

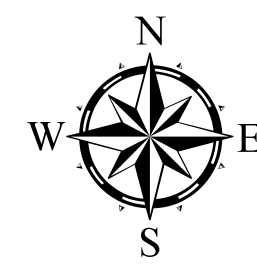
IN COOPERATION WITH
U.S. DEPARTMENT OF TRANSPORTATION
FEDERAL HIGHWAY ADMINISTRATION



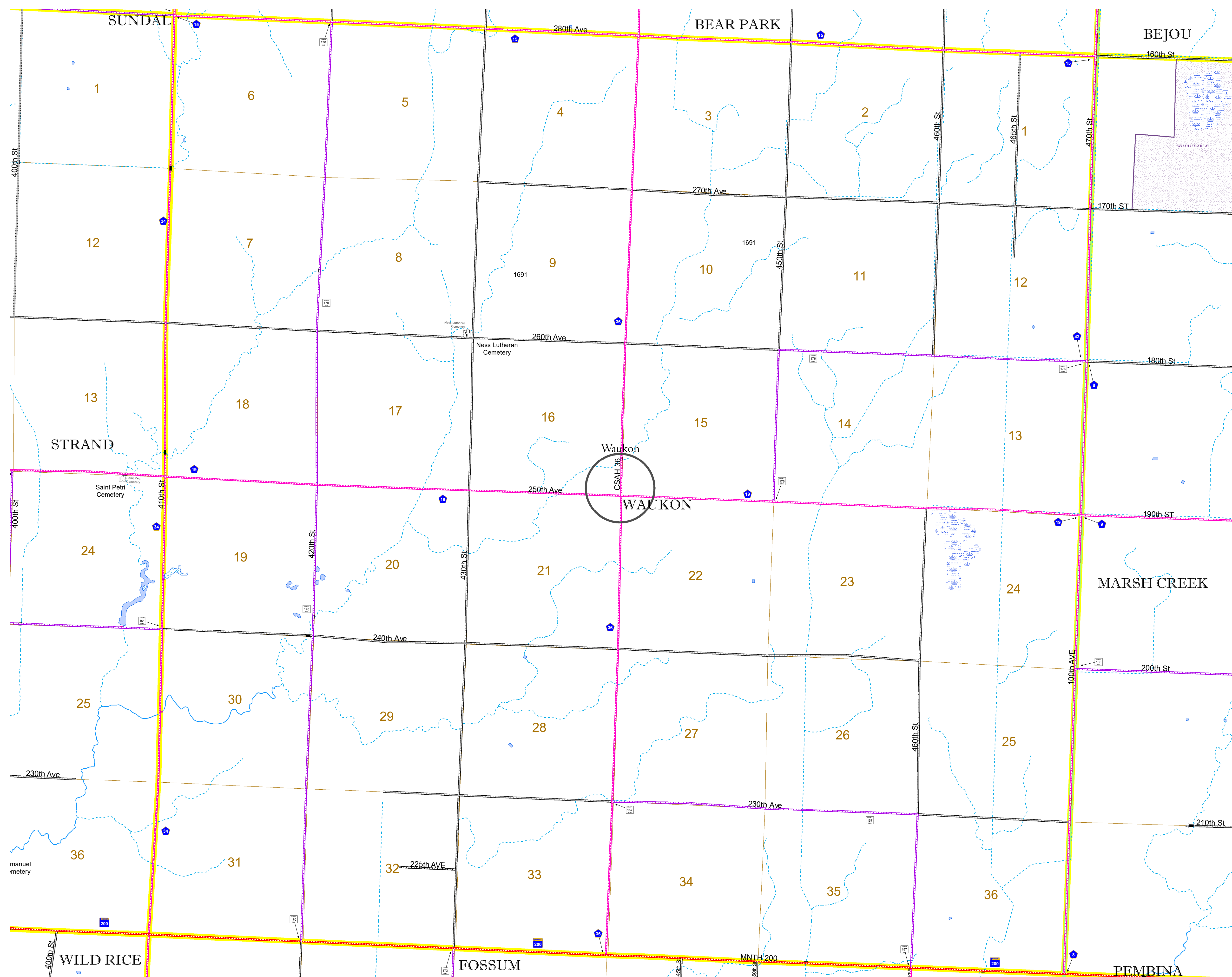
1 in = 1,600 ft

2022

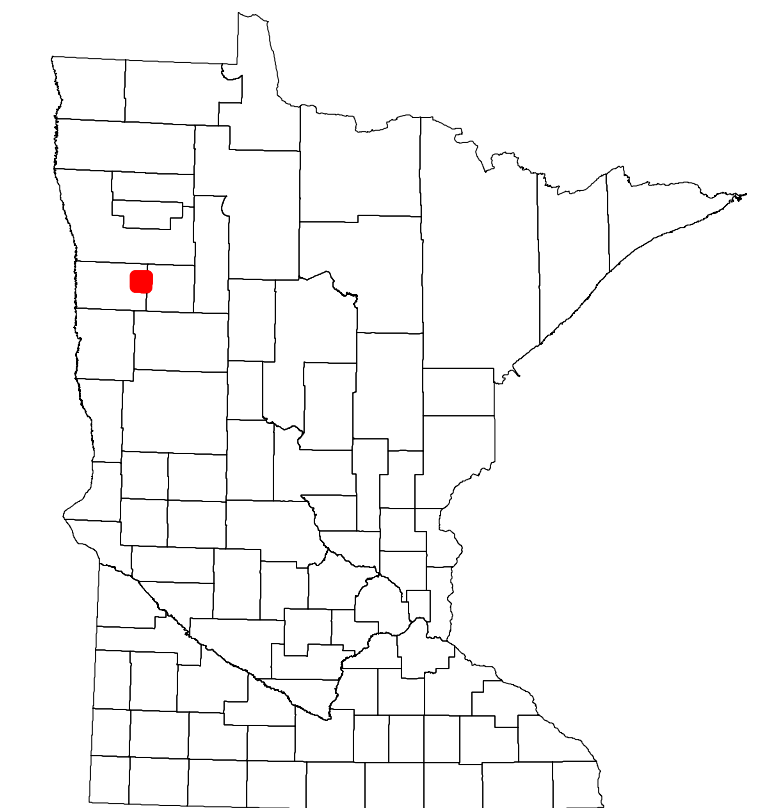
Projection:
Transverse Mercator
NAD 1986
UTM Zone 15



North American Datum
of 1986



ROAD AND ROADWAY FEATURES		RAILROAD AND RAILWAY FEATURES		AVIATION FEATURES	
INTERSTATE	CONCRETE	EMPIRE BUILDER STATION (AMTRAK)	COMMERCIAL AIRPORT	GENERAL AIRPORT	TRIBAL LAND
US HIGHWAY	BITUMINOUS	NORTHSTAR STATION (COMMUTER)	AIRSTRIP	AIRSTRIP	STATE OF MINNESOTA
MN HIGHWAY	GRAVEL	LIGHT RAIL	SEAPLANE	SEAPLANE	COUNTY
COUNTY STATE AID HIGHWAY	DIRT/UNIMPROVED	BLUE LINE	AIRPORT RUNWAY	AIRPORT RUNWAY	MUNICIPALITY
COUNTY ROAD	OTHER	GREEN LINE			UNORGANIZED TERRITORY
TOWNSHIP ROAD	UNKNOWN				FEDERAL ADJUSTED URBAN AREA (2014)
UNORGANIZED TERRITORY ROAD					CIVIL TOWNSHIP
OTHER ROADS					CONGRESSIONAL TOWNSHIP
MUNICIPAL					SECTION
PRIVATE					MILITARY
NATIONAL MONUMENT					VOYAGEURS NATIONAL PARK
NATIONAL WILDLIFE SHRETT GARDEN					BOUNDARY WATERS CANOE AREA WILDERNESS
NATIONAL FOREST					STATE PARK
STATE PARK					REGIONAL PARK
					NATIONAL FOREST
					NATIONAL AND STATE FOREST
					STATE FOREST
					WILDLIFE REFUGUE AREA
					WILDLIFE MANAGEMENT AREA
					HYDROLOGIC FEATURES
					RIVER OR STREAM (PERMANENT)
					LAKE, POND OR RESERVOIR
					STREAM (INTERMITTENT)
					DRAINAGE DITCH
					WETLAND
					ISLAND OR LAND
					REGIONAL WATERSHED



Population (U.S. Census 2010): 114

To request information from this document in an alternative format, call 651-366-4718 or 1-800-657-3774 (Greater Minnesota); 711 or 1-800-627-3529 (Minnesota Relay). You may also send an e-mail to ADArequest.dot@state.mn.us. (Please request at least one week in advance.)