

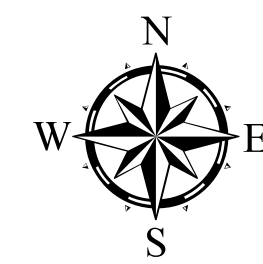
TOWNSHIP OF AASTAD

PREPARED BY THE
MINNESOTA DEPARTMENT OF TRANSPORTATION
OFFICE OF TRANSPORTATION SYSTEM MANAGEMENT

IN COOPERATION WITH
U.S. DEPARTMENT OF TRANSPORTATION
FEDERAL HIGHWAY ADMINISTRATION

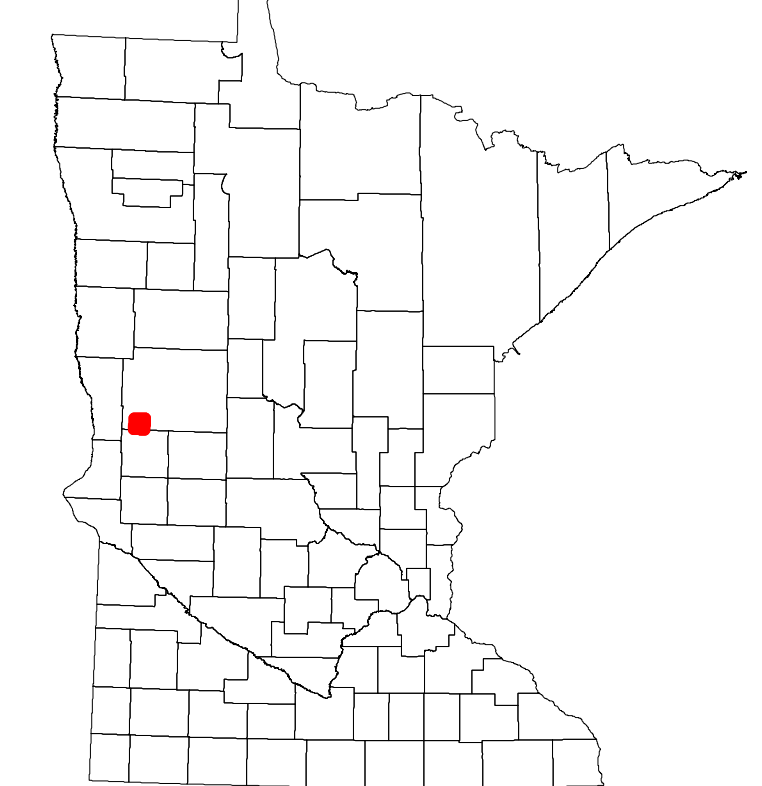


Projection:
Transverse Mercator
NAD 1986
UTM Zone 15

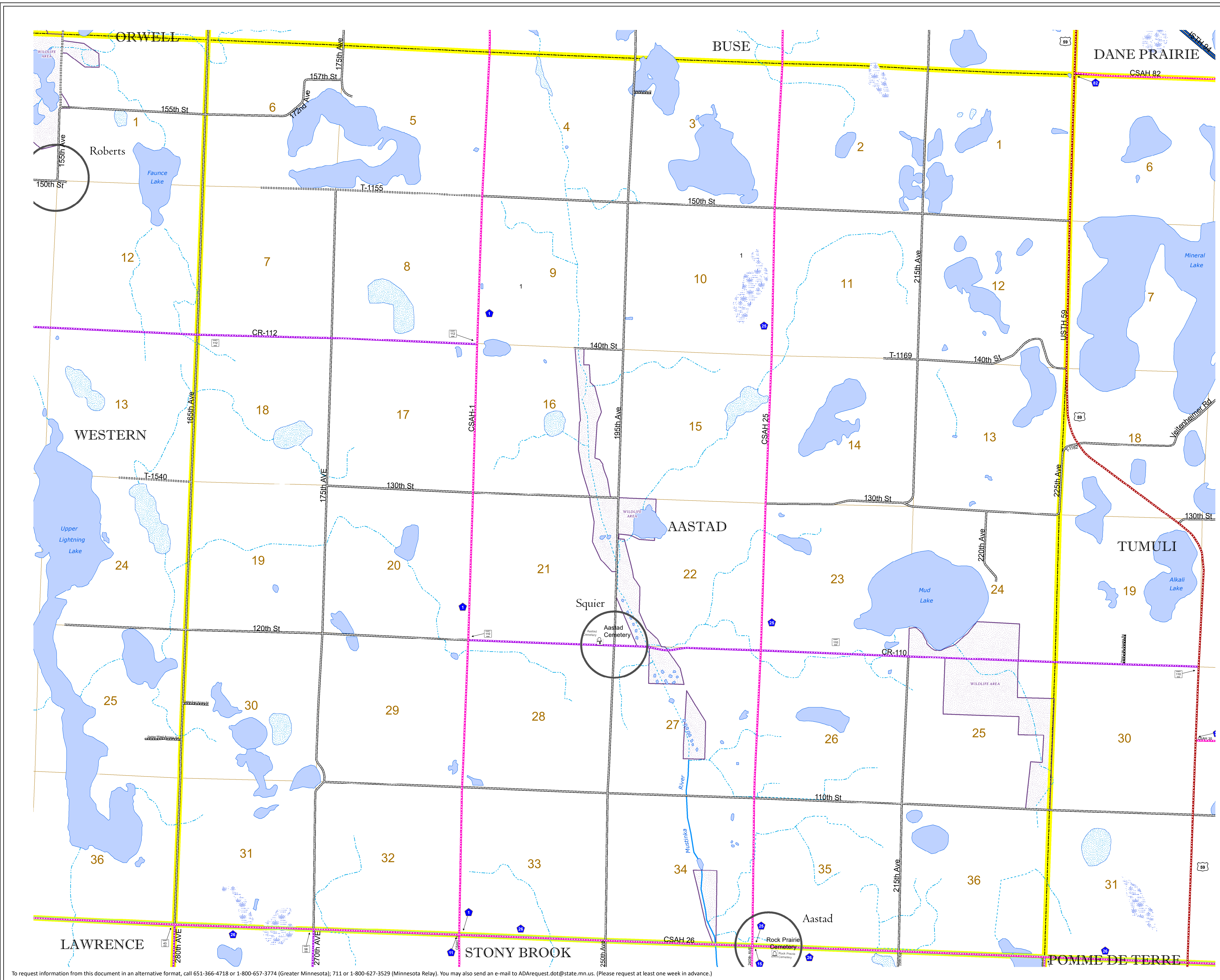


North American Datum
of 1986

ROAD AND ROADWAY FEATURES		RAILROAD AND RAILWAY FEATURES		AVIATION FEATURES		BOUNDARY FEATURES	
INTERSTATE	CONCRETE	INTERSTATE	COMMERCIAL AIRPORT	TRIBAL LAND	TRIBAL LAND	STATE OF MINNESOTA	STATE OF MINNESOTA
US HIGHWAY	BITUMINOUS	EMPIRE BUILDER STATION (AMTRAK)	GENERAL AIRPORT	STATE OF MINNESOTA	STATE OF MINNESOTA	COUNTY	COUNTY
MN HIGHWAY	GRAVEL	NORTHSTAR STATION (COMMUTER)	AIRSTRIP	COUNTY	COUNTY	MUNICIPALITY	MUNICIPALITY
COUNTY STATE AID HIGHWAY	DIRT/UNIMPROVED	LIGHT RAIL	SEAPLANE	MUNICIPALITY	MUNICIPALITY	UNORGANIZED TERRITORY	UNORGANIZED TERRITORY
COUNTY ROAD	OTHER	BLUE LINE	AIRPORT RUNWAY	UNORGANIZED TERRITORY	UNORGANIZED TERRITORY	FEDERAL ADJUSTED URBAN AREA (2014)	FEDERAL ADJUSTED URBAN AREA (2014)
TOWNSHIP ROAD	UNKNOWN	GREEN LINE	BOUNDARY FEATURES	CIVIL TOWNSHIP	CIVIL TOWNSHIP	CIVIL TOWNSHIP	CIVIL TOWNSHIP
UNORGANIZED TERRITORY ROAD				CONGRESSIONAL TOWNSHIP	CONGRESSIONAL TOWNSHIP	SECTION	SECTION
OTHER ROADS				MILITARY	MILITARY	VOYAGEURS NATIONAL PARK	VOYAGEURS NATIONAL PARK
Municipal				MILITARY	MILITARY	BOUNDARY WATERS CANOE AREA WILDERNESS	BOUNDARY WATERS CANOE AREA WILDERNESS
Private				MILITARY	MILITARY	STATE PARK	STATE PARK
National Monument				MILITARY	MILITARY	REGIONAL PARK	REGIONAL PARK
National Wildlife Refuge				MILITARY	MILITARY	NATIONAL FOREST	NATIONAL FOREST
State Park				MILITARY	MILITARY	NATIONAL AND STATE FOREST	NATIONAL AND STATE FOREST
Preserve				MILITARY	MILITARY	STATE FOREST	STATE FOREST
				MILITARY	MILITARY	WILDLIFE REFUGE AREA	WILDLIFE REFUGE AREA
				MILITARY	MILITARY	WILDLIFE MANAGEMENT AREA	WILDLIFE MANAGEMENT AREA
				MILITARY	MILITARY	HYDROLOGIC FEATURES	HYDROLOGIC FEATURES
				MILITARY	MILITARY	RIVER OR STREAM (PERMANENT)	RIVER OR STREAM (PERMANENT)
				MILITARY	MILITARY	LAKE, POND OR RESERVOIR	LAKE, POND OR RESERVOIR
				MILITARY	MILITARY	STREAM (INTERMITTENT)	STREAM (INTERMITTENT)
				MILITARY	MILITARY	DRAINAGE DITCH	DRAINAGE DITCH
				MILITARY	MILITARY	WETLAND	WETLAND
				MILITARY	MILITARY	ISLAND OR LAND	ISLAND OR LAND
				MILITARY	MILITARY	REGIONAL WATERSHED	REGIONAL WATERSHED



Population (U.S. Census 2010): 213



To request information from this document in an alternative format, call 651-366-4718 or 1-800-657-3774 (Greater Minnesota); 711 or 1-800-627-3529 (Minnesota Relay). You may also send an e-mail to ADRequest.dot@state.mn.us. (Please request at least one week in advance.)