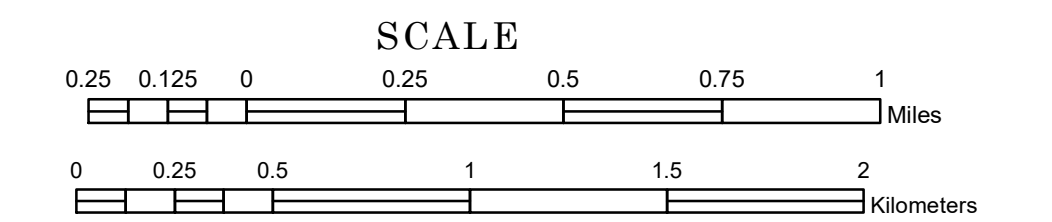


TOWNSHIP OF EDNA

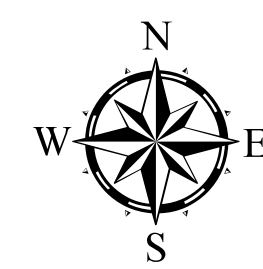
PREPARED BY THE
MINNESOTA DEPARTMENT OF TRANSPORTATION
OFFICE OF TRANSPORTATION SYSTEM MANAGEMENT

IN COOPERATION WITH
U.S. DEPARTMENT OF TRANSPORTATION
FEDERAL HIGHWAY ADMINISTRATION



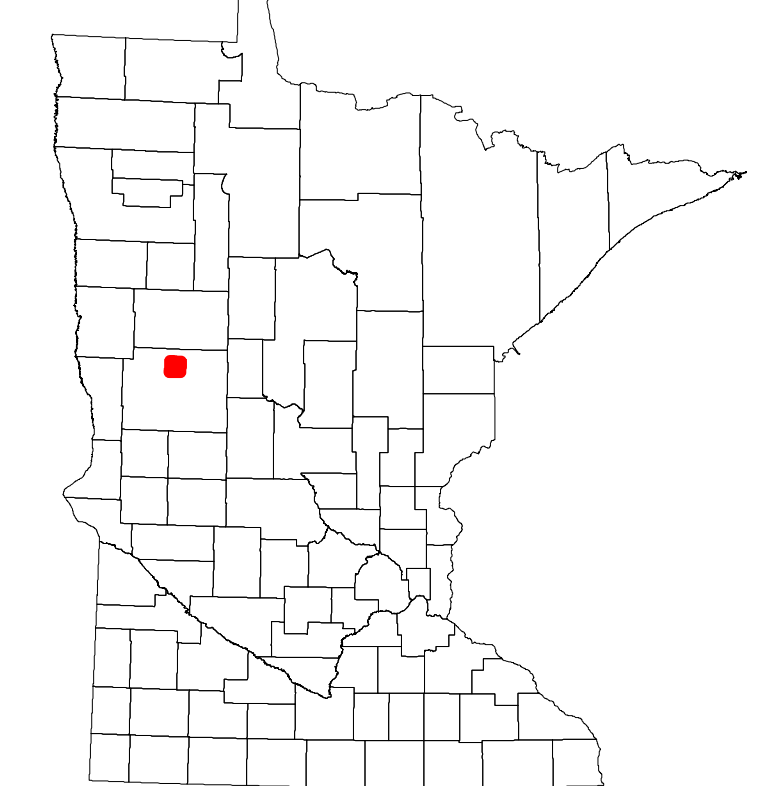
1 in = 1,600 ft
2022

Projection:
Transverse Mercator
NAD 1986
UTM Zone 15

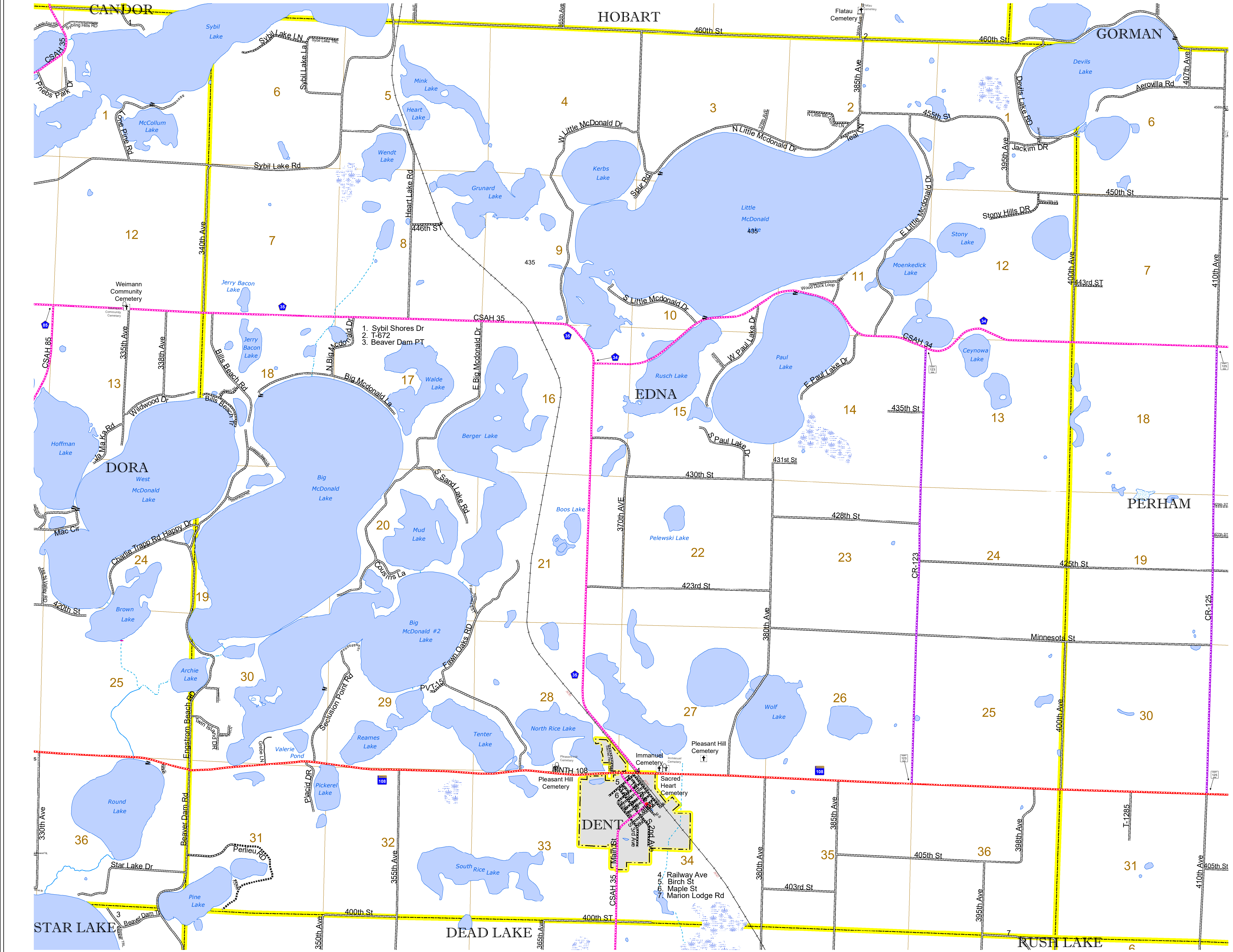


North American Datum
of 1986

ROAD AND ROADWAY FEATURES		AVIATION FEATURES	
INTERSTATE	[Symbol]	COMMERCIAL AIRPORT	[Symbol]
US HIGHWAY	[Symbol]	GENERAL AIRPORT	[Symbol]
MN HIGHWAY	[Symbol]	AIRSTRIP	[Symbol]
COUNTY STATE AID HIGHWAY	[Symbol]	SEAPLANE	[Symbol]
COUNTY ROAD	[Symbol]	AIRPORT RUNWAY	[Symbol]
TOWNSHIP ROAD	[Symbol]	BOUNDARY FEATURES	[Symbol]
UNORGANIZED TERRITORY ROAD	[Symbol]	TRIAL LAND	[Symbol]
OTHER ROADS	[Symbol]	STATE OF MINNESOTA	[Symbol]
Municipal	[Symbol]	COUNTY	[Symbol]
Private	[Symbol]	MUNICIPALITY	[Symbol]
National Monument	[Symbol]	UNORGANIZED TERRITORY	[Symbol]
National Wildlife	[Symbol]	FEDERAL ADJUSTED URBAN AREA (2014)	[Symbol]
State Game	[Symbol]	CIVIL TOWNSHIP	[Symbol]
Preserve	[Symbol]	CONGRESSIONAL TOWNSHIP	[Symbol]
RAILROAD AND RAILWAY FEATURES		CITY CENTERS	
RAMP OR CONNECTOR	[Symbol]	STATE CAPITAL	[Symbol]
INTERSTATE EXIT	[Symbol]	COUNTY SEAT	[Symbol]
GREAT RIVER ROAD	[Symbol]	CITY CENTER	[Symbol]
UNINCORPORATED COMMUNITY	[Symbol]	UNINCORPORATED COMMUNITY	[Symbol]
EMPIRE BUILDER STATION (AMTRAK)	[Symbol]	PUBLIC SERVICE FEATURES	
NORTHSTAR STATION (COMMUTER)	[Symbol]	MNDOT OFFICE	[Symbol]
LIGHT RAIL	[Symbol]	MNDOT TRUCK STATION	[Symbol]
BLUE LINE	[Symbol]	HIGHWAY PATROL DISTRICT OFFICE	[Symbol]
GREEN LINE	[Symbol]	STATE TRAVEL INFORMATION CENTER	[Symbol]
INFRASTRUCTURE FEATURES		REST AREA (FULL SERVICE)	[Symbol]
LONG BRIDGE (200' OR GREATER SPAN)	[Symbol]	REST AREA (VAULT TOILET)	[Symbol]
MAJOR BRIDGE (20' TO 200' SPAN)	[Symbol]	PARK AND RIDE LOT	[Symbol]
MINOR BRIDGE (5' TO 20' SPAN)	[Symbol]	PORT OF ENTRY	[Symbol]
DAM	[Symbol]	PUBLIC ACCESS POINT	[Symbol]
LOCK AND DAM	[Symbol]	MN STATE COLLEGE AND UNIVERSITY SYSTEM (MNSCU)	[Symbol]
CITY CENTERS		UNIVERSITY OF MN SYSTEM	[Symbol]
STATE CAPITAL	[Symbol]	FAIRGROUNDS	[Symbol]
COUNTY SEAT	[Symbol]	CULTURAL FEATURES	
CITY CENTER	[Symbol]	STATE HISTORICAL MARKER	[Symbol]
UNINCORPORATED COMMUNITY	[Symbol]	HISTORIC DISTRICT	[Symbol]
PUBLIC SERVICE FEATURES		HISTORIC SITE	[Symbol]
MNDOT OFFICE	[Symbol]	MONUMENT	[Symbol]
MNDOT TRUCK STATION	[Symbol]	HYDROLOGIC FEATURES	
HIGHWAY PATROL DISTRICT OFFICE	[Symbol]	WATERWAY	[Symbol]
STATE TRAVEL INFORMATION CENTER	[Symbol]	LAKE, POND OR RESERVOIR	[Symbol]
REST AREA (FULL SERVICE)	[Symbol]	STREAM (INTERMITTENT)	[Symbol]
REST AREA (VAULT TOILET)	[Symbol]	DRAINAGE DITCH	[Symbol]
PARK AND RIDE LOT	[Symbol]	WETLAND	[Symbol]
PORT OF ENTRY	[Symbol]	ISLAND OR LAND	[Symbol]
PUBLIC ACCESS POINT	[Symbol]	REGIONAL WATERSHED	[Symbol]
MN STATE COLLEGE AND UNIVERSITY SYSTEM (MNSCU)	[Symbol]	BOUNDARY FEATURES	
UNIVERSITY OF MN SYSTEM	[Symbol]	TRIAL LAND	[Symbol]
FAIRGROUNDS	[Symbol]	STATE OF MINNESOTA	[Symbol]
CULTURAL FEATURES		COUNTY	[Symbol]
STATE HISTORICAL MARKER	[Symbol]	MUNICIPALITY	[Symbol]
HISTORIC DISTRICT	[Symbol]	UNORGANIZED TERRITORY	[Symbol]
HISTORIC SITE	[Symbol]	FEDERAL ADJUSTED URBAN AREA (2014)	[Symbol]
MONUMENT	[Symbol]	CIVIL TOWNSHIP	[Symbol]
HYDROLOGIC FEATURES		CONGRESSIONAL TOWNSHIP	[Symbol]
WATERWAY	[Symbol]	SECTION	[Symbol]
LAKE, POND OR RESERVOIR	[Symbol]	MILITARY	[Symbol]
STREAM (INTERMITTENT)	[Symbol]	VOYAGEURS NATIONAL PARK	[Symbol]
DRAINAGE DITCH	[Symbol]	BOUNDARY WATERS CANOE AREA WILDERNESS	[Symbol]
WETLAND	[Symbol]	STATE PARK	[Symbol]
ISLAND OR LAND	[Symbol]	REGIONAL PARK	[Symbol]
REGIONAL WATERSHED	[Symbol]	NATIONAL FOREST	[Symbol]
BOUNDARY FEATURES		NATIONAL AND STATE FOREST	[Symbol]
TRIAL LAND	[Symbol]	STATE FOREST	[Symbol]
STATE OF MINNESOTA	[Symbol]	NATIONAL TRAIL	[Symbol]
COUNTY	[Symbol]	WILDLIFE REFUGE AREA	[Symbol]
MUNICIPALITY	[Symbol]	WILDLIFE MANAGEMENT AREA	[Symbol]
UNORGANIZED TERRITORY	[Symbol]	HYDROLOGIC FEATURES	
FEDERAL ADJUSTED URBAN AREA (2014)	[Symbol]	RIVER OR STREAM (PERMANENT)	[Symbol]
CIVIL TOWNSHIP	[Symbol]	LAKE, POND OR RESERVOIR	[Symbol]
CONGRESSIONAL TOWNSHIP	[Symbol]	STREAM (INTERMITTENT)	[Symbol]
SECTION	[Symbol]	DRAINAGE DITCH	[Symbol]
MILITARY	[Symbol]	WETLAND	[Symbol]
VOYAGEURS NATIONAL PARK	[Symbol]	ISLAND OR LAND	[Symbol]
BOUNDARY WATERS CANOE AREA WILDERNESS	[Symbol]	REGIONAL WATERSHED	[Symbol]
STATE PARK	[Symbol]	BOUNDARY FEATURES	
REGIONAL PARK	[Symbol]	TRIAL LAND	[Symbol]
NATIONAL FOREST	[Symbol]	STATE OF MINNESOTA	[Symbol]
NATIONAL AND STATE FOREST	[Symbol]	COUNTY	[Symbol]
STATE FOREST	[Symbol]	MUNICIPALITY	[Symbol]
NATIONAL TRAIL	[Symbol]	UNORGANIZED TERRITORY	[Symbol]
WILDLIFE REFUGE AREA	[Symbol]	FEDERAL ADJUSTED URBAN AREA (2014)	[Symbol]
WILDLIFE MANAGEMENT AREA	[Symbol]	CIVIL TOWNSHIP	[Symbol]
HYDROLOGIC FEATURES		CONGRESSIONAL TOWNSHIP	[Symbol]
RIVER OR STREAM (PERMANENT)	[Symbol]	SECTION	[Symbol]
LAKE, POND OR RESERVOIR	[Symbol]	MILITARY	[Symbol]
STREAM (INTERMITTENT)	[Symbol]	VOYAGEURS NATIONAL PARK	[Symbol]
DRAINAGE DITCH	[Symbol]	BOUNDARY WATERS CANOE AREA WILDERNESS	[Symbol]
WETLAND	[Symbol]	STATE PARK	[Symbol]
ISLAND OR LAND	[Symbol]	REGIONAL PARK	[Symbol]
REGIONAL WATERSHED	[Symbol]	NATIONAL FOREST	[Symbol]



Population (U.S. Census 2010): 897



To request information from this document in an alternative format, call 651-366-4718 or 1-800-657-3774 (Greater Minnesota); 711 or 1-800-627-3529 (Minnesota Relay). You may also send an e-mail to ADRequest.dot@state.mn.us. (Please request at least one week in advance.)