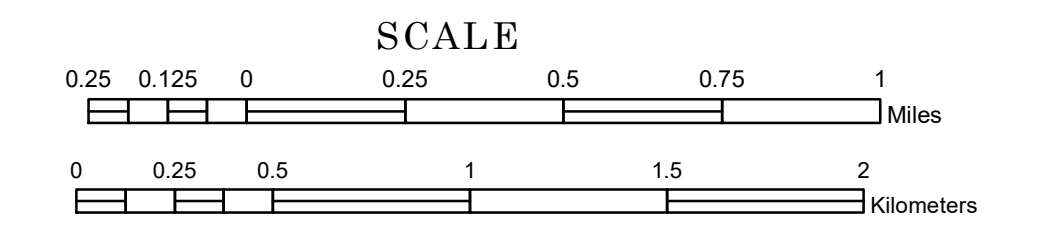


TOWNSHIP OF HOMESTEAD

PREPARED BY THE
MINNESOTA DEPARTMENT OF TRANSPORTATION
OFFICE OF TRANSPORTATION SYSTEM MANAGEMENT

IN COOPERATION WITH
U.S. DEPARTMENT OF TRANSPORTATION
FEDERAL HIGHWAY ADMINISTRATION



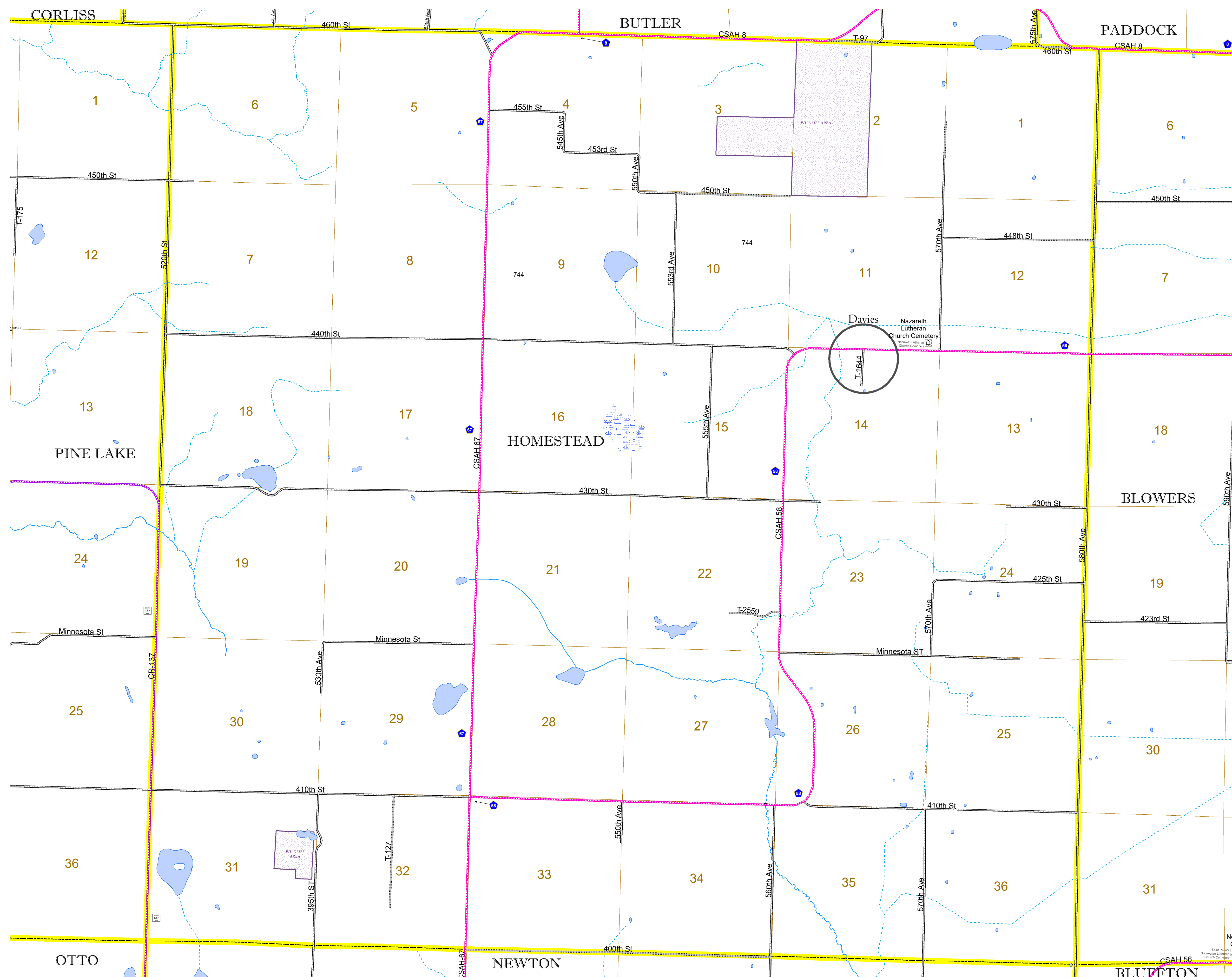
1 in = 1,600 ft

2022

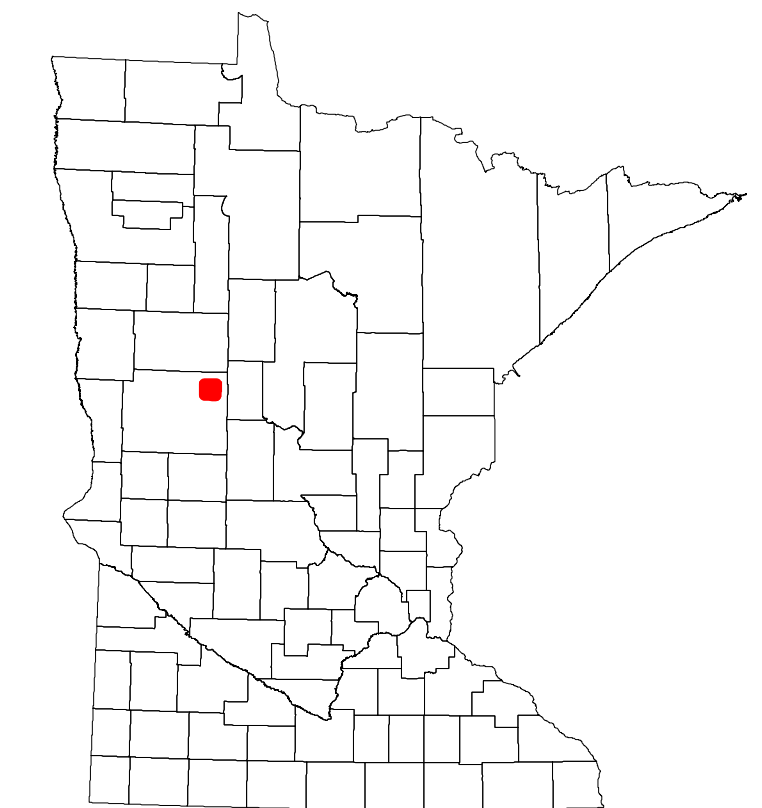
Projection:
Transverse Mercator
NAD 1986
UTM Zone 15



North American Datum
of 1986



ROAD AND ROADWAY FEATURES		BOUNDARY FEATURES	
INTERSTATE	CONCRETE	TRIBAL LAND	STATE OF MINNESOTA
US HIGHWAY	BITUMINOUS	COUNTY	MUNICIPALITY
MN HIGHWAY	GRAVEL	UNINCORPORATED TOWNSHIP	CIVIL TOWNSHIP
COUNTY STATE AID HIGHWAY	DIRT/UNIMPROVED	FEDERAL ADJUSTED URBAN AREA (2014)	CIVIL TOWNSHIP
COUNTY ROAD	DIRT/UNIMPROVED	CONGRESSIONAL TOWNSHIP	SECTION
TOWNSHIP ROAD	OTHER	MILITARY	VOYAGEURS NATIONAL PARK
UNORGANIZED TERRITORY ROAD	UNKNOWN	BOUNDARY WATERS CANOE AREA WILDERNESS	STATE PARK
OTHER ROADS		UNINCORPORATED TOWNSHIP	REGIONAL PARK
MUNICIPAL	RAMP OR CONNECTOR	SECTION	NATIONAL FOREST
NATIVE SERVICE	INTERSTATE EXIT	MILITARY	NATIONAL AND STATE FOREST
MULTIUSE	AVIATION FEATURES	VOYAGEURS NATIONAL PARK	STATE FOREST
	GENERAL AIRPORT	BOUNDARY WATERS CANOE AREA WILDERNESS	NATIONAL TRAIL
	AIRSTRIP	STATE PARK	WILDLIFE REFUGUE AREA
	SEAPLANE	REGIONAL PARK	WILDLIFE MANAGEMENT AREA
	AIRPORT RUNWAY	NATIONAL FOREST	HYDROLOGIC FEATURES
		NATIONAL AND STATE FOREST	RIVER OR STREAM (PERENNIAL)
		STATE FOREST	LAKE, POND OR RESERVOIR
		WILDLIFE REFUGUE AREA	STREAM (INTERMITTENT)
		WILDLIFE MANAGEMENT AREA	DRAINAGE DITCH
		HYDROLOGIC FEATURES	WETLAND
		RIVER OR STREAM (PERENNIAL)	ISLAND OR LAND
		LAKE, POND OR RESERVOIR	REGIONAL WATERSHED
		STREAM (INTERMITTENT)	
		DRAINAGE DITCH	
		WETLAND	
		ISLAND OR LAND	
		REGIONAL WATERSHED	



To request information from this document in an alternative format, call 651-366-4718 or 1-800-657-3774 (Greater Minnesota); 711 or 1-800-627-3529 (Minnesota Relay). You may also send an e-mail to ADARrequest.dot@state.mn.us. (Please request at least one week in advance.)