

# TOWNSHIP OF HIGHLANDING

PREPARED BY THE  
MINNESOTA DEPARTMENT OF TRANSPORTATION  
OFFICE OF TRANSPORTATION SYSTEM MANAGEMENT

IN COOPERATION WITH  
U.S. DEPARTMENT OF TRANSPORTATION  
FEDERAL HIGHWAY ADMINISTRATION



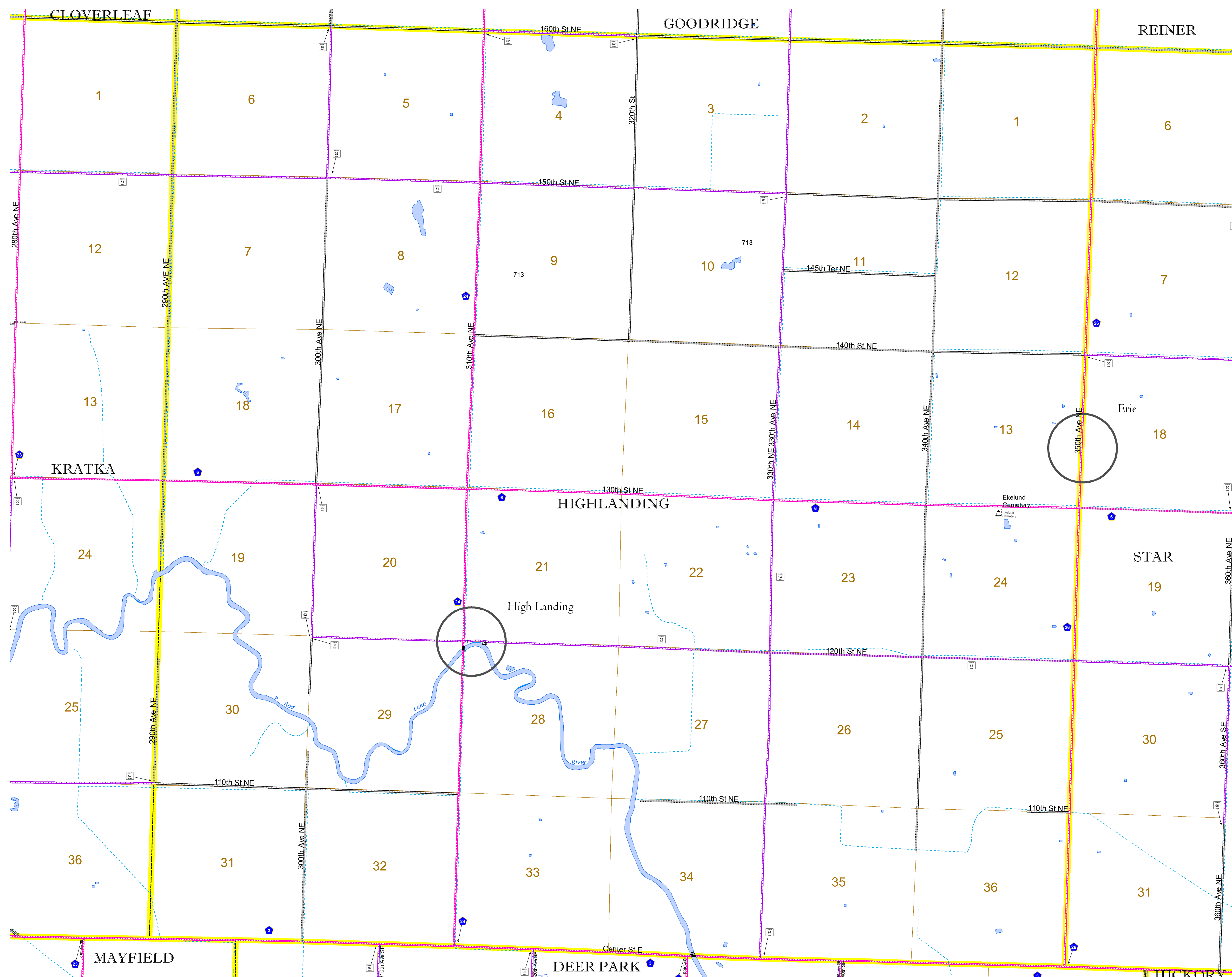
1 in = 1,600 ft

2022

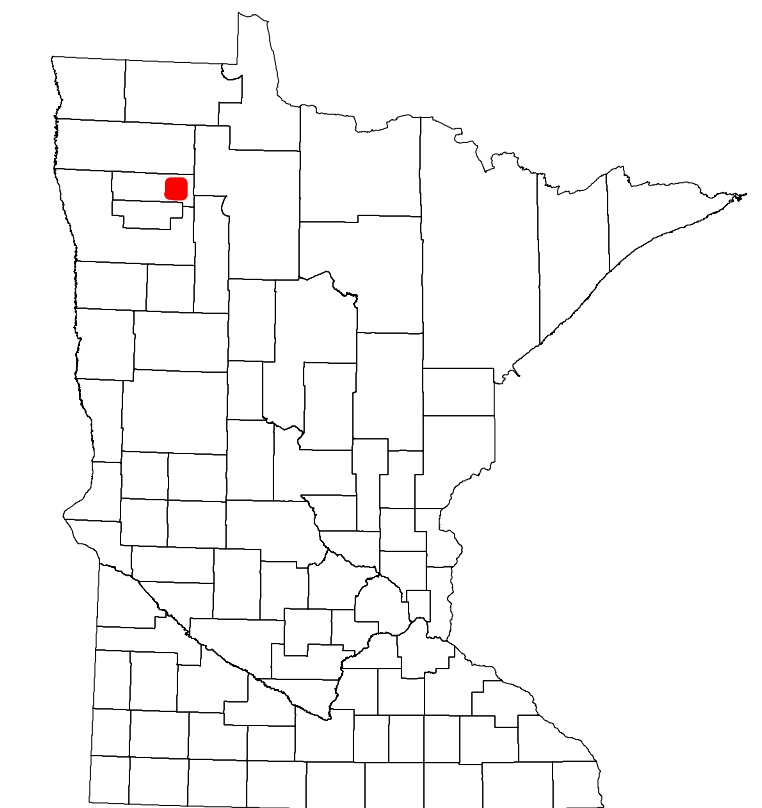
Projection:  
Transverse Mercator  
NAD 1986  
UTM Zone 15



North American Datum  
of 1986



ROAD AND ROADWAY FEATURES		BOUNDARY FEATURES	
INTERSTATE	CONCRETE	TRIBAL LAND	STATE OF MINNESOTA
US HIGHWAY	BITUMINOUS	COUNTY	MUNICIPALITY
MN HIGHWAY	GRAVEL	UNORGANIZED TERRITORY	FEDERAL ADJUSTED URBAN AREA (2014)
COUNTY STATE AID HIGHWAY	DIRT/UNIMPROVED	CIVIL TOWNSHIP	CONGRESSIONAL TOWNSHIP
COUNTY ROAD	OTHER	SECTION	MILITARY
TOWNSHIP ROAD	UNKNOWN	VOYAGEURS NATIONAL PARK	BOUNDARY WATERS CANOE AREA WILDERNESS
UNORGANIZED TERRITORY ROAD		STATE PARK	REGIONAL PARK
OTHER ROADS		NATIONAL FOREST	NATIONAL AND STATE FOREST
Municipal		STATE FOREST	NATIONAL TRAIL
Private		WILDLIFE REFUGUE AREA	WILDLIFE MANAGEMENT AREA
National Monument		WILDLIFE REFUGUE AREA	WILDLIFE MANAGEMENT AREA
National Park		HYDROLOGIC FEATURES	
National Wildlife Refuge		RIVER OR STREAM (PERMANENT)	LAKE, POND OR RESERVOIR
State Game Preserve		STREAM (INTERMITTENT)	DRAINAGE DITCH
State Park Preserve		WETLAND	ISLAND OR LAND
		REGIONAL WATERSHED	
RAILROAD AND RAILWAY FEATURES		CITY CENTERS	
EMPIRE BUILDER STATION (AMTRAK)	COMMERCIAL AIRPORT	STATE CAPITAL	COUNTY SEAT
NORTHSTAR STATION (COMMUTER)	GENERAL AIRPORT	CITY CENTER	CITY CENTER
LIGHT RAIL	AIRSTRIP	UNINCORPORATED COMMUNITY	
BLUE LINE	SEAPLANE		
GREEN LINE	AIRPORT RUNWAY		
INFRASTRUCTURE FEATURES		PUBLIC SERVICE FEATURES	
LONG BRIDGE (200' OR GREATER SPAN)	STATE OF MINNESOTA	MNDOT OFFICE	MNDOT TRUCK STATION
MAJOR BRIDGE (20' TO 200' SPAN)	COUNTY	HIGHWAY PATROL DISTRICT OFFICE	STATE TRAVEL INFORMATION CENTER
MINOR BRIDGE (5' TO 20' SPAN)	MUNICIPALITY	REST AREA (FULL SERVICE)	REST AREA (VAULT TOILET)
DAM	UNORGANIZED TERRITORY	WAYSIDE (VAULT OR PIT TOILET)	PARK AND RIDE LOT
LOCK AND DAM	FEDERAL ADJUSTED URBAN AREA (2014)	PORT OF ENTRY	PUBLIC ACCESS POINT
	CIVIL TOWNSHIP	MN STATE COLLEGE AND UNIVERSITY SYSTEM (MNSCU)	UNIVERSITY OF MN SYSTEM
	CONGRESSIONAL TOWNSHIP	FAIRGROUNDS	
	SECTION		
	MILITARY		
	VOYAGEURS NATIONAL PARK		
	BOUNDARY WATERS CANOE AREA WILDERNESS		
	STATE PARK		
	REGIONAL PARK		
	NATIONAL FOREST		
	NATIONAL AND STATE FOREST		
	STATE FOREST		
	NATIONAL TRAIL		
	WILDLIFE REFUGUE AREA		
	WILDLIFE MANAGEMENT AREA		
	HYDROLOGIC FEATURES		
	RIVER OR STREAM (PERMANENT)		
	LAKE, POND OR RESERVOIR		
	STREAM (INTERMITTENT)		
	DRAINAGE DITCH		
	WETLAND		
	ISLAND OR LAND		
	REGIONAL WATERSHED		



Population (U.S. Census 2010): 194

To request information from this document in an alternative format, call 651-366-4718 or 1-800-657-3774 (Greater Minnesota); 711 or 1-800-627-3529 (Minnesota Relay). You may also send an e-mail to ADRequest.dot@state.mn.us. (Please request at least one week in advance.)