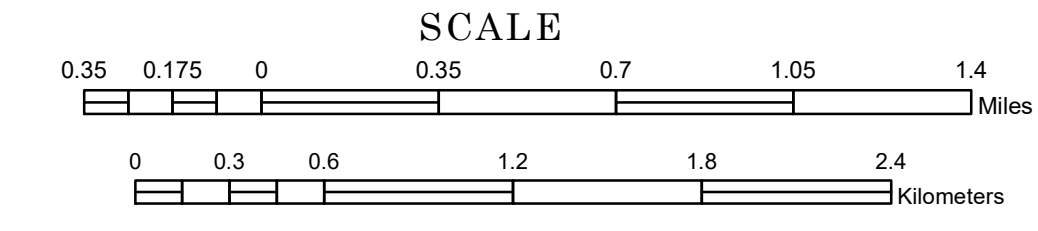


# TOWNSHIP OF SWEET

PREPARED BY THE  
MINNESOTA DEPARTMENT OF TRANSPORTATION  
OFFICE OF TRANSPORTATION SYSTEM MANAGEMENT

IN COOPERATION WITH  
U.S. DEPARTMENT OF TRANSPORTATION  
FEDERAL HIGHWAY ADMINISTRATION



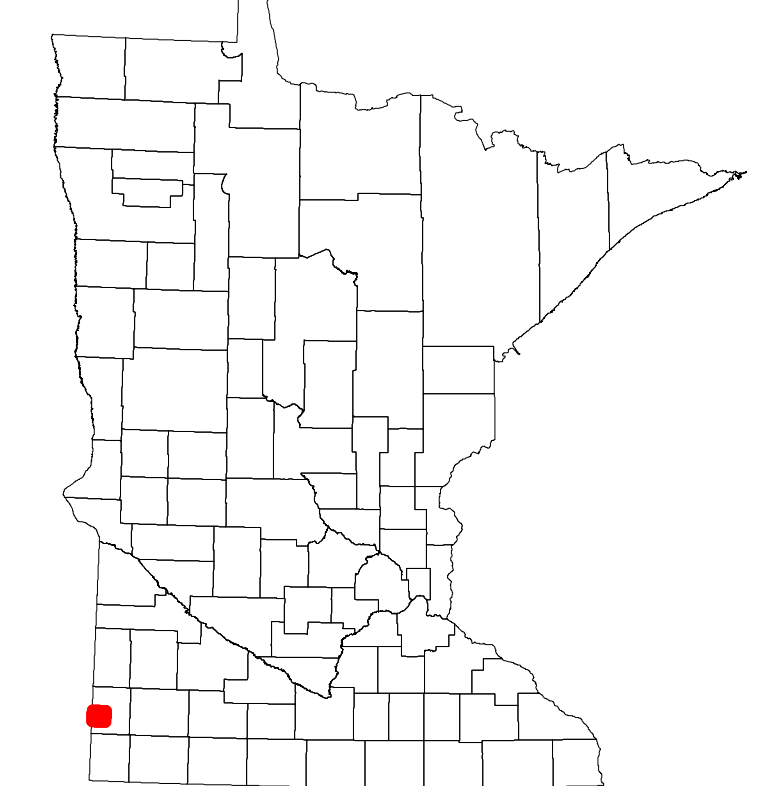
1 in = 2,000 ft  
**2022**

Projection:  
Transverse Mercator  
NAD 1986  
UTM Zone 15

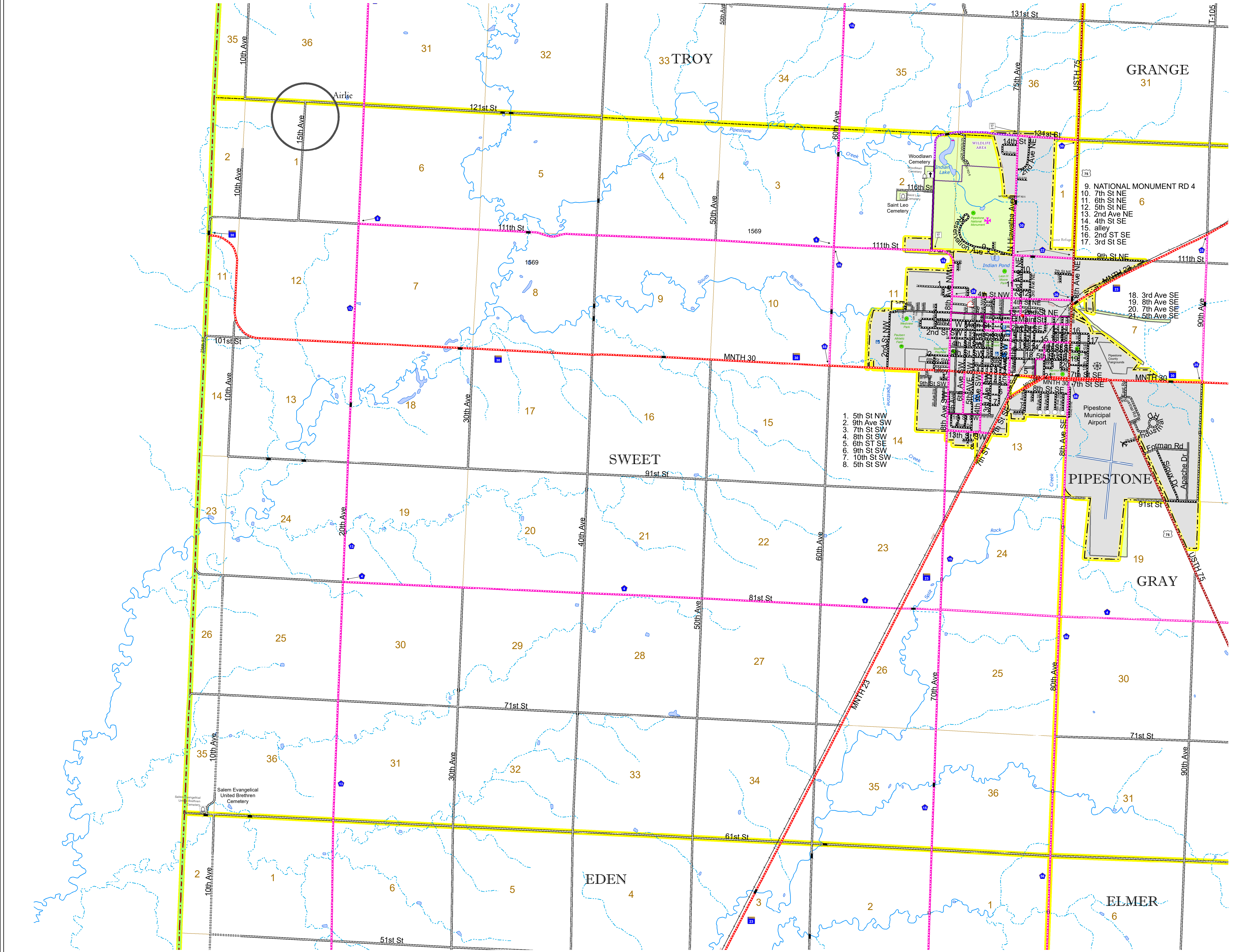


North American Datum  
of 1986

ROAD AND ROADWAY FEATURES		AVIATION FEATURES	
INTERSTATE	CONCRETE	COMMERCIAL AIRPORT	GENERAL AIRPORT
US HIGHWAY	BITUMINOUS	NORTHSTAR STATION (COMMUTER)	AIRSTRIP
MN HIGHWAY	GRAVEL	SEAPLANE	AIRPORT RUNWAY
COUNTY STATE AID HIGHWAY	DIRT/UNIMPROVED	RAILROAD AND RAILWAY FEATURES	BOUNDARY FEATURES
COUNTY ROAD	OTHER	EMPIRE BUILDER STATION (AMTRAK)	TRIBAL LAND
TOWNSHIP ROAD	UNKNOWN	NORTHSTAR STATION (COMMUTER)	STATE OF MINNESOTA
UNORGANIZED TERRITORY ROAD		BLUE LINE	COUNTY
OTHER ROADS		GREEN LINE	MUNICIPALITY
Municipal	RAMP OR CONNECTOR	LONG BRIDGE (200' OR GREATER SPAN)	UNORGANIZED TERRITORY
Private	INTERSTATE EXIT	MAJOR BRIDGE (20' TO 200' SPAN)	FEDERAL ADJUSTED URBAN AREA (2014)
National Monument	GREAT RIVER ROAD	MINOR BRIDGE (5' TO 20' SPAN)	CIVIL TOWNSHIP
National Forest		DAM	CONGRESSIONAL TOWNSHIP
State Park		LOCK-AND-DAM	SECTION
Preserve			MILITARY
			VOYAGEURS NATIONAL PARK
			BOUNDARY WATERS CANOE AREA WILDERNESS
			STATE PARK
			REGIONAL PARK
			NATIONAL FOREST
			NATIONAL AND STATE FOREST
			STATE FOREST
			NATIONAL TRAIL
			WILDLIFE REFUGUE AREA
			WILDLIFE MANAGEMENT AREA
			HYDROLOGIC FEATURES
			RIVER OR STREAM (PERMANENT)
			LAKE, POND OR RESERVOIR
			STREAM (INTERMITTENT)
			DRAINAGE DITCH
			WETLAND
			ISLAND OR LAND
			REGIONAL WATERSHED



Population (U.S. Census 2010): 324



To request information from this document in an alternative format, call 651-366-4718 or 1-800-657-3774 (Greater Minnesota); 711 or 1-800-627-3529 (Minnesota Relay). You may also send an e-mail to ADARquest.dot@state.mn.us. (Please request at least one week in advance.)