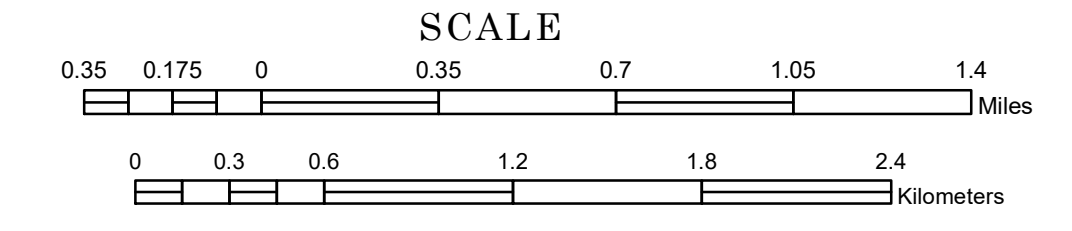


TOWNSHIP OF TROY

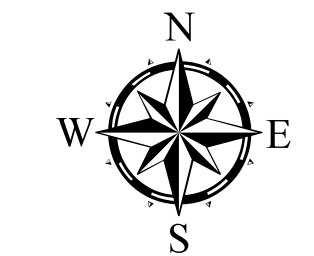
PREPARED BY THE
MINNESOTA DEPARTMENT OF TRANSPORTATION
OFFICE OF TRANSPORTATION SYSTEM MANAGEMENT

IN COOPERATION WITH
U.S. DEPARTMENT OF TRANSPORTATION
FEDERAL HIGHWAY ADMINISTRATION

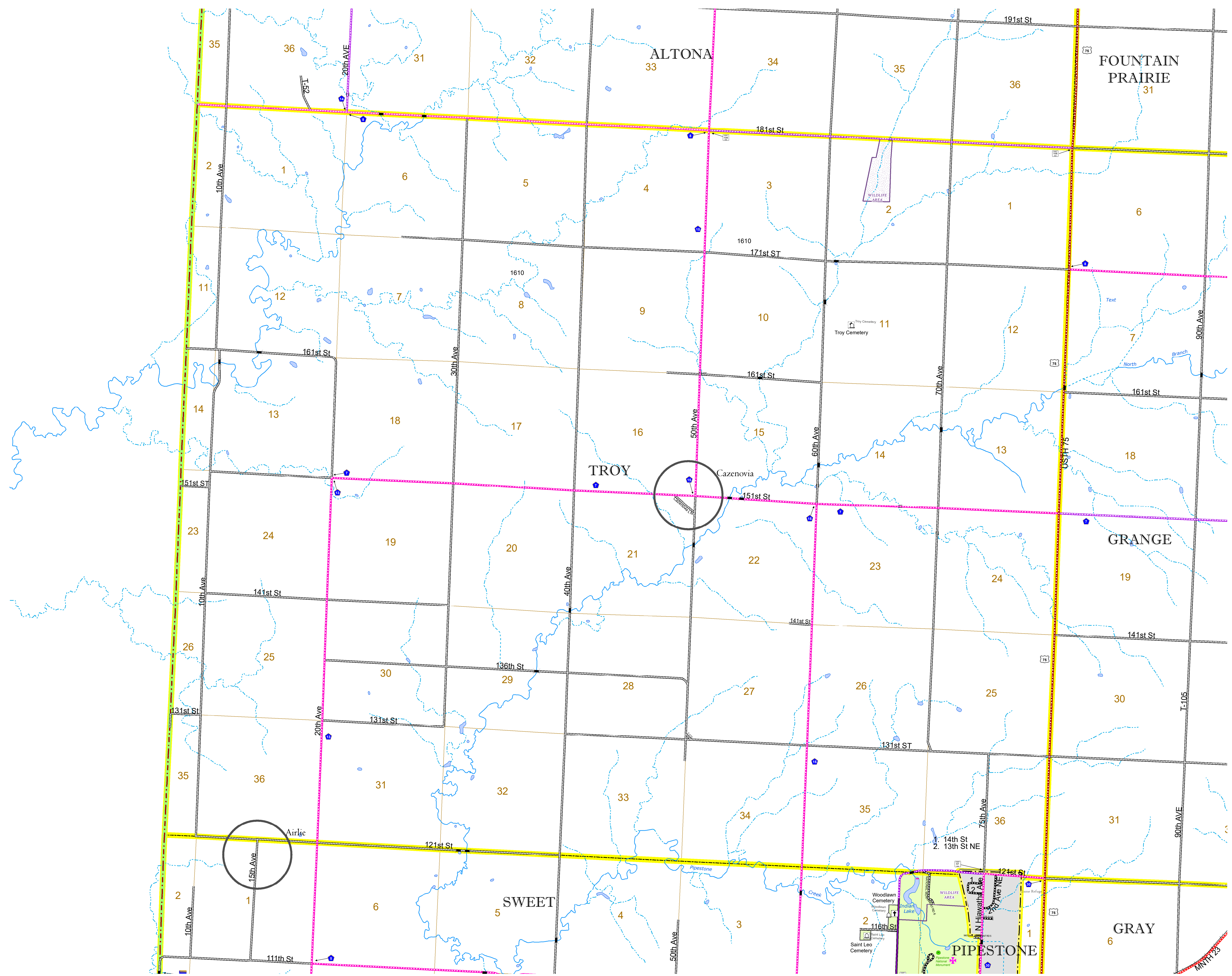


1 in = 2,000 ft
2022

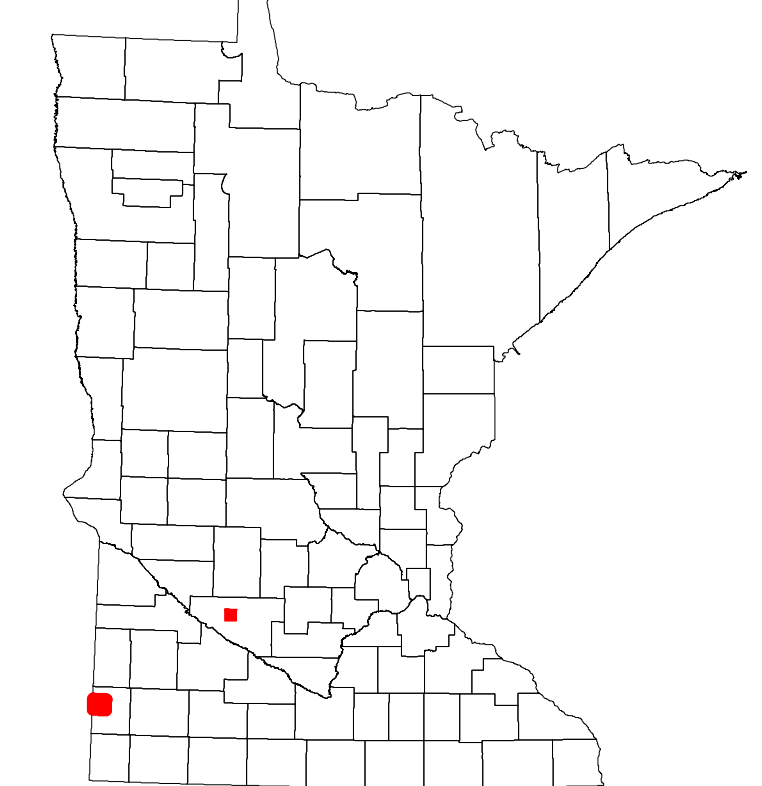
Projection:
Transverse Mercator
NAD 1986
UTM Zone 15



North American Datum
of 1986



ROAD AND ROADWAY FEATURES		RAILROAD AND RAILWAY FEATURES		AVIATION FEATURES		BOUNDARY FEATURES	
INTERSTATE	CONCRETE	EMPIRE BUILDER STATION (AMTRAK)	COMMERCIAL AIRPORT	TRIBAL LAND	STATE OF MINNESOTA	COUNTY	MUNICIPALITY
US HIGHWAY	BITUMINOUS	NORTHSTAR STATION (COMPUTER)	GENERAL AIRPORT	STATE OF MINNESOTA	COUNTY	MUNICIPALITY	MUNICIPALITY
MN HIGHWAY	GRAVEL	LIGHT RAIL	AIRSTRIP	LONG BRIDGE (200' OR GREATER SPAN)	MAJOR BRIDGE (20' TO 200' SPAN)	MINOR BRIDGE (5' TO 20' SPAN)	DAM
COUNTY STATE AID HIGHWAY	DIRT/UNIMPROVED	BLUE LINE	SEAPLANE	LOCK AND DAM	CITY CENTERS	STATE CAPITAL	COUNTY SEAT
COUNTY ROAD	OTHER	GREEN LINE	AIRPORT RUNWAY	STATE CAPITAL	COUNTY SEAT	CITY CENTER	UNINCORPORATED COMMUNITY
TOWNSHIP ROAD	UNKNOWN	INFRASTRUCTURE FEATURES	OTHER ROADS	MNDOT OFFICE	MNDOT TRUCK STATION	HIGHWAY PATROL DISTRICT OFFICE	STATE TRAVEL INFORMATION CENTER
UNORGANIZED TERRITORY ROAD	RAMP OR CONNECTOR	LONG BRIDGE (200' OR GREATER SPAN)	MUNICIPAL	REST AREA (FULL SERVICE)	REST AREA (VAULT TOILET)	WAYSIDE (VAULT OR PIT TOILET)	PARK AND RIDE LOT
OTHER ROADS	INTERSTATE EXIT	MAJOR BRIDGE (20' TO 200' SPAN)	NATIONAL MONUMENT	PORT OF ENTRY	PUBLIC ACCESS POINT	MN STATE COLLEGE AND UNIVERSITY SYSTEM (MNSCU)	UNIVERSITY OF MN SYSTEM
MUNICIPAL	GREAT RIVER ROAD	MINOR BRIDGE (5' TO 20' SPAN)	NATIONAL FOREST	FAIRGROUNDS	CULTURAL FEATURES	STATE HISTORICAL MARKER	HISTORIC DISTRICT
NATURAL SERVICE	AVIATION FEATURES	DAM	NATIONAL FOREST	STATE HISTORICAL MARKER	STATE HISTORICAL MARKER	HISTORIC DISTRICT	HISTORIC SITE
MILITARY	GENERAL AIRPORT	LOCK AND DAM	COMMERCIAL AIRPORT	STATE CAPITAL	COUNTY SEAT	CITY CENTER	UNINCORPORATED COMMUNITY
	GENERAL AIRPORT		GENERAL AIRPORT				
	AIRSTRIP		AIRSTRIP				
	SEAPLANE		SEAPLANE				
	AIRPORT RUNWAY		AIRPORT RUNWAY				
	BOUNDARY FEATURES		BOUNDARY FEATURES				
	TRIBAL LAND		TRIBAL LAND				
	STATE OF MINNESOTA		STATE OF MINNESOTA				
	COUNTY		COUNTY				
	MUNICIPALITY		MUNICIPALITY				
	UNORGANIZED TERRITORY		UNORGANIZED TERRITORY				
	FEDERAL ADJUSTED URBAN AREA (2014)		FEDERAL ADJUSTED URBAN AREA (2014)				
	CIVIL TOWNSHIP		CIVIL TOWNSHIP				
	CONGRESSIONAL TOWNSHIP		CONGRESSIONAL TOWNSHIP				
	SECTION		SECTION				
	MILITARY		MILITARY				
	VOYAGEURS NATIONAL PARK		VOYAGEURS NATIONAL PARK				
	BOUNDARY WATERS CANOE AREA WILDERNESS		BOUNDARY WATERS CANOE AREA WILDERNESS				
	STATE PARK		STATE PARK				
	REGIONAL PARK		REGIONAL PARK				
	NATIONAL FOREST		NATIONAL FOREST				
	NATIONAL AND STATE FOREST		NATIONAL AND STATE FOREST				
	STATE FOREST		STATE FOREST				
	NATIONAL TRAIL		NATIONAL TRAIL				
	WILDLIFE REFUGUE AREA		WILDLIFE REFUGUE AREA				
	WILDLIFE MANAGEMENT AREA		WILDLIFE MANAGEMENT AREA				
	HYDROLOGIC FEATURES		HYDROLOGIC FEATURES				
	RIVER OR STREAM (PERENNIAL)		RIVER OR STREAM (PERENNIAL)				
	LAKE, POND OR RESERVOIR		LAKE, POND OR RESERVOIR				
	STREAM (INTERMITTENT)		STREAM (INTERMITTENT)				
	DRAINAGE DITCH		DRAINAGE DITCH				
	WETLAND		WETLAND				
	ISLAND OR LAND		ISLAND OR LAND				
	REGIONAL WATERSHED		REGIONAL WATERSHED				



Population (U.S. Census 2010): 289

To request information from this document in an alternative format, call 651-366-4718 or 1-800-657-3774 (Greater Minnesota); 711 or 1-800-627-3529 (Minnesota Relay). You may also send an e-mail to ADAREquest.dot@state.mn.us. (Please request at least one week in advance.)