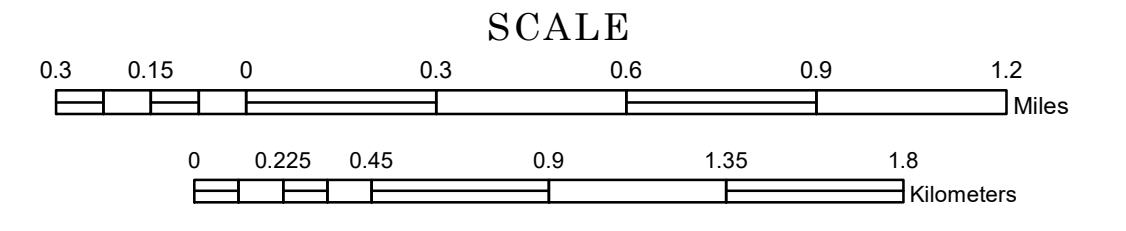


TOWNSHIP OF ROOME

PREPARED BY THE
MINNESOTA DEPARTMENT OF TRANSPORTATION
OFFICE OF TRANSPORTATION SYSTEM MANAGEMENT

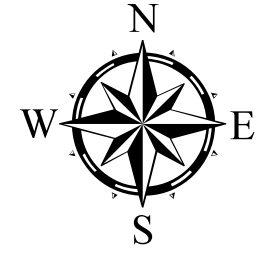
IN COOPERATION WITH
U.S. DEPARTMENT OF TRANSPORTATION
FEDERAL HIGHWAY ADMINISTRATION



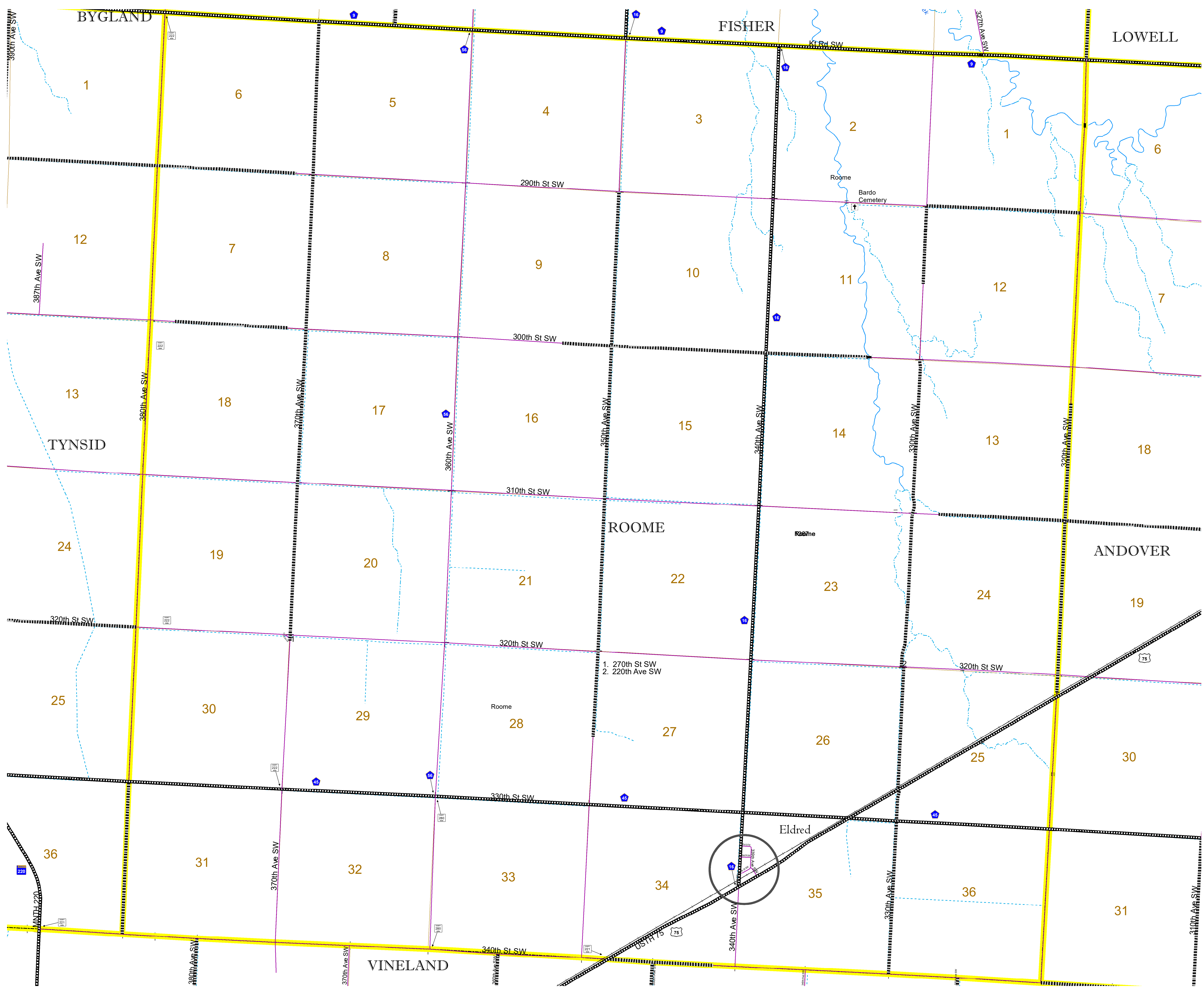
1 in = 1,600 ft

2023

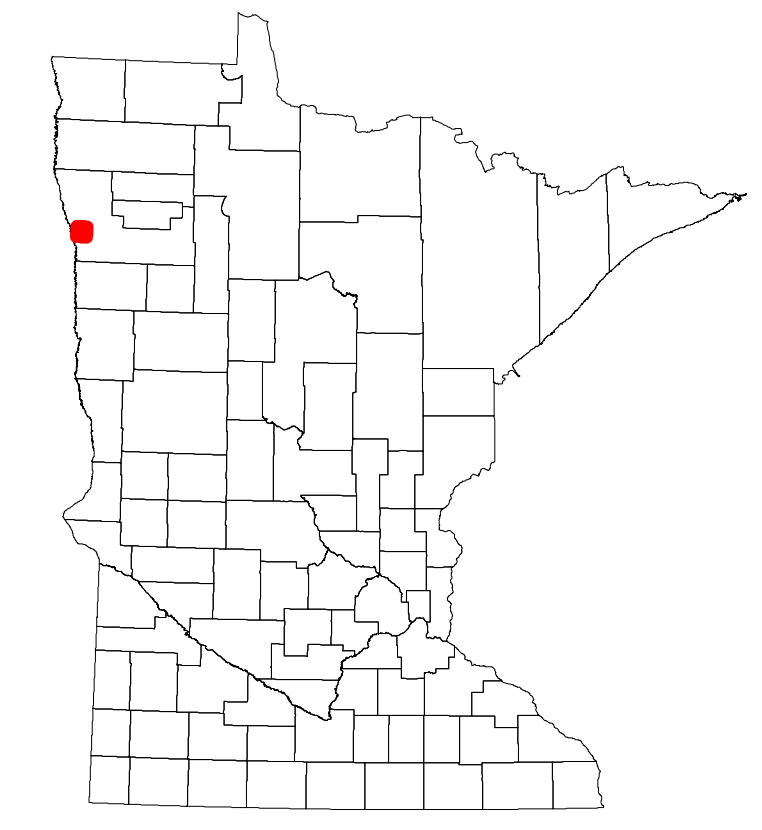
Projection:
Transverse Mercator
NAD 1986
UTM Zone 15



North American Datum
of 1986



ROAD AND ROADWAY FEATURES	AVIATION FEATURES
INTERSTATE	COMMERCIAL AIRPORT
US HIGHWAY	GENERAL AIRPORT
MN HIGHWAY	AIRSTRIP
COUNTY STATE AID HIGHWAY	SEAPLANE
COUNTY ROAD	AIRPORT RUNWAY
TOWNSHIP ROAD	BOUNDARY FEATURES
UNORGANIZED TERRITORY ROAD	TRIAL LAND
OTHER ROADS	STATE OF MINNESOTA
Municipal	COUNTY
Private	MUNICIPALITY
National Monument	UNINCORPORATED COMMUNITY
National Historic Site	STATE CAPITAL
National Wildlife Refuge	CITY CENTER
State Park	CITY SEAT
Railroad	COUNTY SEAT
RAILROAD AND RAILWAY FEATURES	CITY CENTER
COMMERCIAL AIRPORT	CITY CENTER
GENERAL AIRPORT	CITY CENTER
AIRSTRIP	CITY CENTER
SEAPLANE	CITY CENTER
AIRPORT RUNWAY	CITY CENTER
BOUNDARY FEATURES	CITY CENTER
TRIAL LAND	CITY CENTER
STATE OF MINNESOTA	CITY CENTER
COUNTY	CITY CENTER
MUNICIPALITY	CITY CENTER
UNINCORPORATED COMMUNITY	CITY CENTER
FEDERAL ADJUSTED URBAN AREA (2014)	CITY CENTER
CIVIL TOWNSHIP	CITY CENTER
CONGRESSIONAL TOWNSHIP	CITY CENTER
SECTION	CITY CENTER
MILITARY	CITY CENTER
VOYAGEUR NATIONAL PARK	CITY CENTER
BOUNDARY WATERS CANOE AREA WILDERNESS	CITY CENTER
STATE PARK	CITY CENTER
REGIONAL PARK	CITY CENTER
NATIONAL FOREST	CITY CENTER
NATIONAL AND STATE FOREST	CITY CENTER
STATE FOREST	CITY CENTER
NATIONAL TRAIL	CITY CENTER
WILDLIFE REFUGE AREA	CITY CENTER
WILDLIFE MANAGEMENT AREA	CITY CENTER
HYDROLOGIC FEATURES	CITY CENTER
RIVER OR STREAM (PERMANENT)	CITY CENTER
LAKE, POND OR RESERVOIR	CITY CENTER
STREAM (INTERMITTENT)	CITY CENTER
DRAINAGE DITCH	CITY CENTER
WETLAND	CITY CENTER
ISLAND OR LAND	CITY CENTER
REGIONAL WATERSHED	CITY CENTER
CULTURAL FEATURES	CITY CENTER
STATE HISTORICAL MARKER	CITY CENTER
HISTORIC DISTRICT	CITY CENTER
HISTORIC SITE	CITY CENTER
MONUMENT	CITY CENTER



Population (U.S. Census 2010): 177

To request information from this document in an alternative format, call 651-366-4718 or 1-800-657-3774 (Greater Minnesota); 711 or 1-800-627-3529 (Minnesota Relay). You may also send an e-mail to ADAREquest.dot@state.mn.us. (Please request at least one week in advance.)