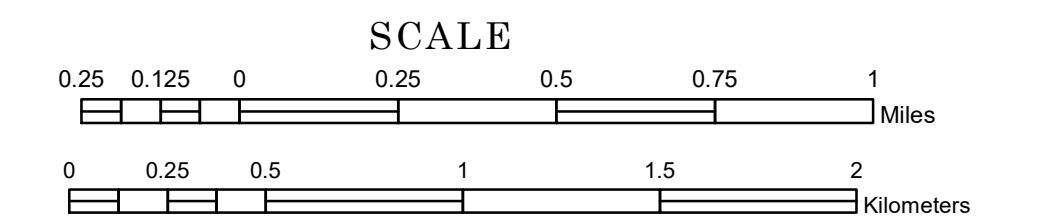


TOWNSHIP OF WALDEN

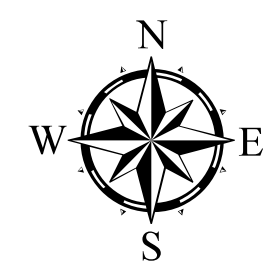
PREPARED BY THE
MINNESOTA DEPARTMENT OF TRANSPORTATION
OFFICE OF TRANSPORTATION SYSTEM MANAGEMENT

IN COOPERATION WITH
U.S. DEPARTMENT OF TRANSPORTATION
FEDERAL HIGHWAY ADMINISTRATION

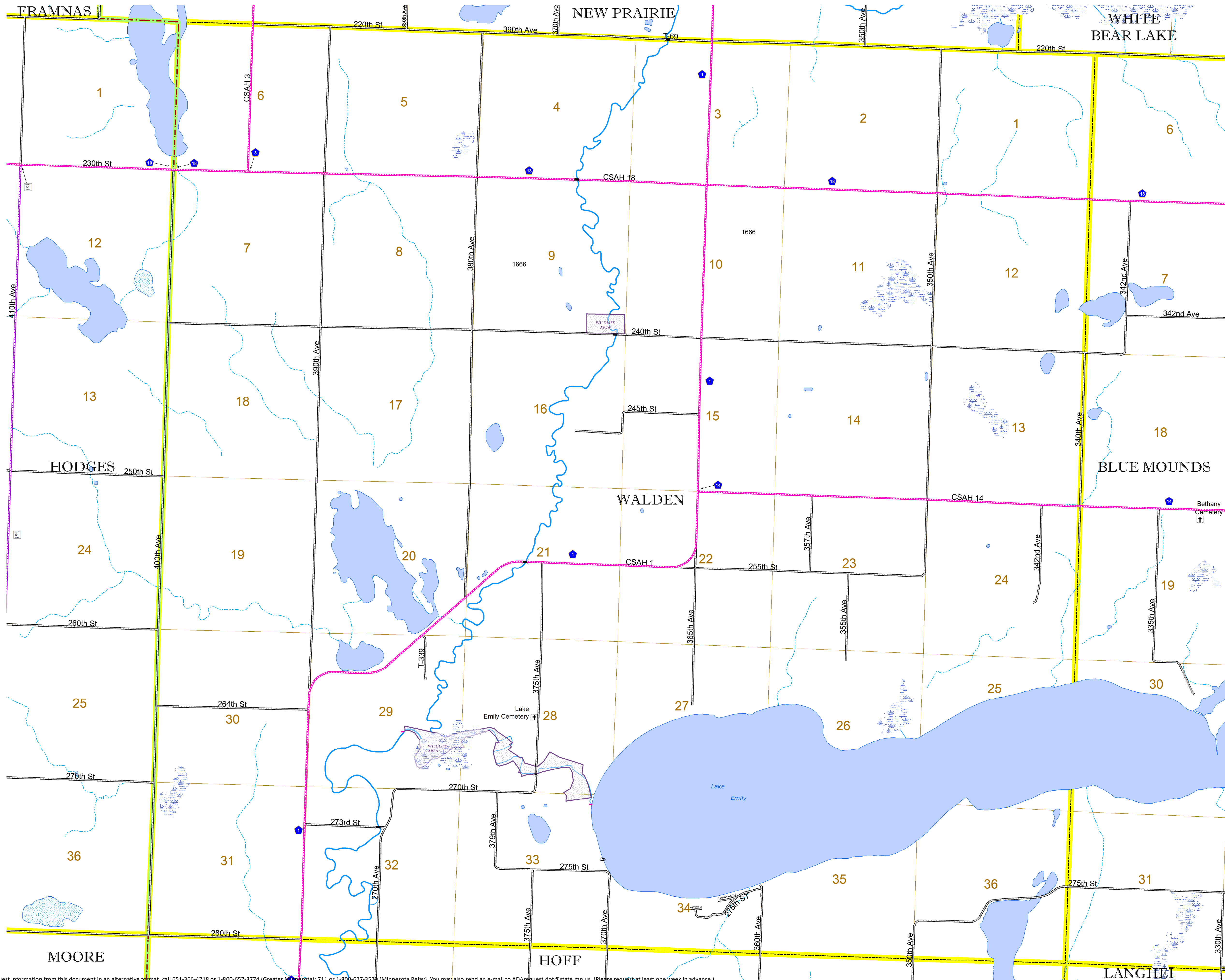


1 in = 1,600 ft
2021

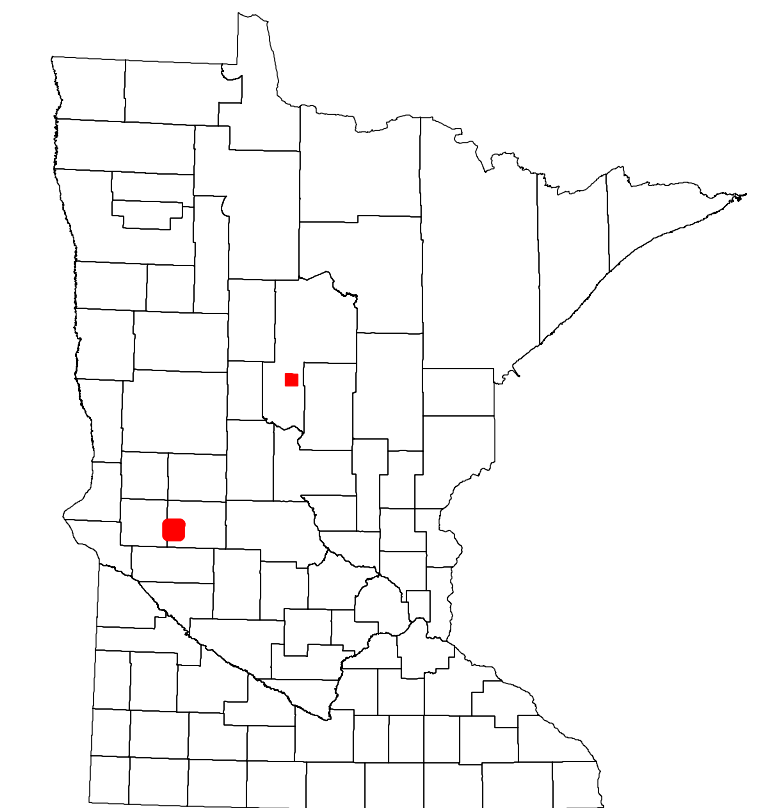
Projection:
Transverse Mercator
NAD 1986
UTM Zone 15



North American Datum
of 1986



ROAD AND ROADWAY FEATURES					
INTERSTATE	CONCRETE				
US HIGHWAY	BITUMINOUS				
MN HIGHWAY	GRAVEL				
COUNTY STATE AID HIGHWAY	DIRT/UNIMPROVED				
COUNTY ROAD	OTHER				
TOWNSHIP ROAD	UNKNOWN				
UNORGANIZED TERRITORY ROAD	RAMP OR CONNECTOR				
OTHER ROADS	INTERSTATE EXIT				
Municipal	NATIONAL MONUMENT	STATE FOREST	STATE PARK	PRESENT	AVIATION FEATURES
Nature Service	National Park	National Wildlife	State Game	Preserve	COMMERCIAL AIRPORT
Mulvan	National Forest	State Park	Preserve		GENERAL AIRPORT
RAILROAD AND RAILWAY FEATURES		BOUNDARY FEATURES			
EMPIRE BUILDER STATION (AMTRAK)					TRIBAL LAND
NORTHSTAR STATION (COMPUTER)					STATE OF MINNESOTA
LIGHT RAIL					COUNTY
BLUE LINE					MUNICIPALITY
GREEN LINE					UNORGANIZED TERRITORY
INFRASTRUCTURE FEATURES		FEDERAL ADJUSTED URBAN AREA (2014)			
LONG BRIDGE (200' OR GREATER SPAN)					CIVIL TOWNSHIP
MAJOR BRIDGE (20' TO 200' SPAN)					CONGRESSIONAL TOWNSHIP
MINOR BRIDGE (5' TO 20' SPAN)					SECTION
LOCK AND DAM					MILITARY
CITY CENTERS		PUBLIC SERVICE FEATURES			
STATE CAPITAL	COUNTY SEAT	CITY CENTER	UNINCORPORATED COMMUNITY		MNDOT OFFICE
PUBLIC SERVICE FEATURES		BOUNDARY FEATURES			
MNDOT TRUCK STATION					VOYAGEURS NATIONAL PARK
HIGHWAY PATROL DISTRICT OFFICE					BOUNDARY WATERS GANOE AREA WILDERNESS
STATE TRAVEL INFORMATION CENTER					STATE PARK
REST AREA (FULL SERVICE)					REGIONAL PARK
REST AREA (VAULT TOILET)					NATIONAL FOREST
WAYSIDE (VAULT OR PIT TOILET)					NATIONAL AND STATE FOREST
PARK AND RIDE LOT					STATE FOREST
PORT OF ENTRY					NATIONAL TRAIL
PUBLIC ACCESS POINT					WILDLIFE REFUGUE AREA
MN STATE COLLEGE AND UNIVERSITY SYSTEM (MNSCU)					WILDLIFE MANAGEMENT AREA
UNIVERSITY OF MN SYSTEM					HYDROLOGIC FEATURES
FARMS					RIVER OR STREAM (PERENNIAL)
CULTURAL FEATURES		HYDROLOGIC FEATURES			
STATE HISTORICAL MARKER					LAKE, POND OR RESERVOIR
HISTORIC DISTRICT					STREAM (INTERMITTENT)
HISTORIC SITE					DRAINAGE DITCH
MONUMENT					WETLAND
					ISLAND OR LAND
					REGIONAL WATERSHED



Population (U.S. Census 2010): 169

To request information from this document in an alternative format, call 651-366-4718 or 1-800-657-3774 (Greater Minnesota); 711 or 1-800-627-3529 (Minnesota Relay). You may also send an e-mail to ADARquest.dot@state.mn.us. (Please request at least one week in advance.)