

TOWNSHIP OF UNDERWOOD

PREPARED BY THE
MINNESOTA DEPARTMENT OF TRANSPORTATION
OFFICE OF TRANSPORTATION SYSTEM MANAGEMENT

IN COOPERATION WITH
U.S. DEPARTMENT OF TRANSPORTATION
FEDERAL HIGHWAY ADMINISTRATION



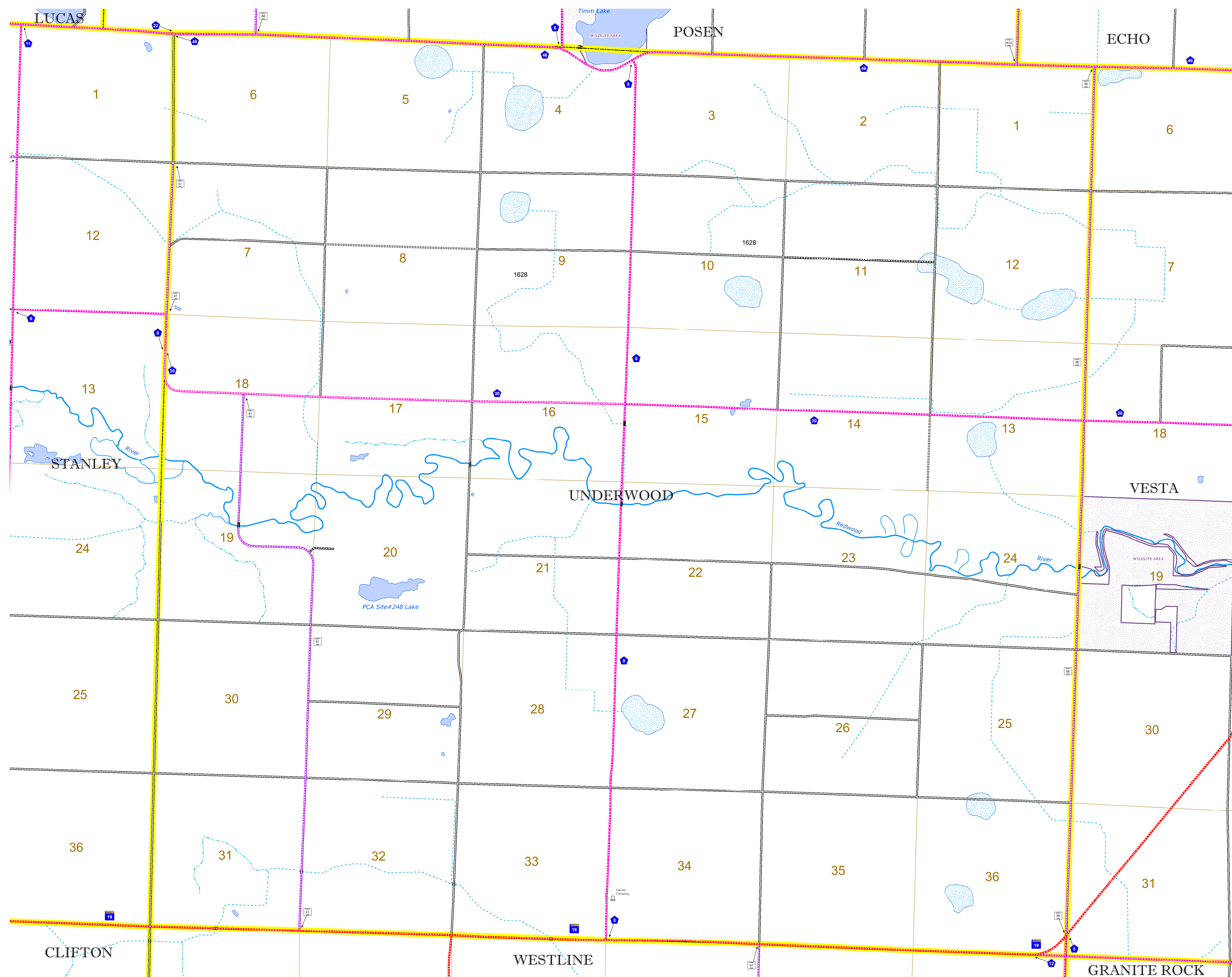
1 in = 1,600 ft

2022

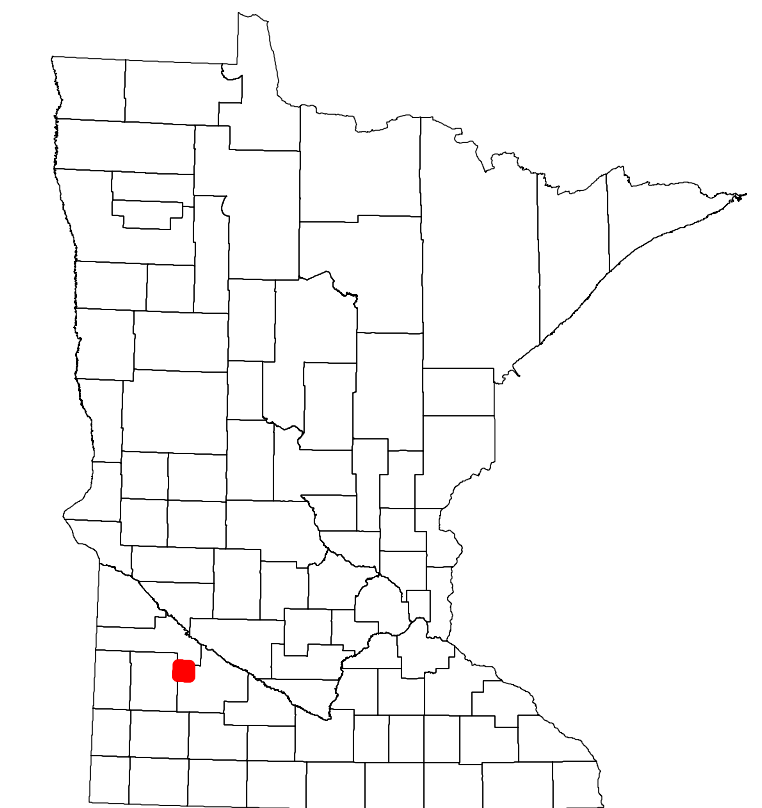
Projection:
Transverse Mercator
NAD 1986
UTM Zone 15



North American Datum
of 1986



ROAD AND ROADWAY FEATURES		AVIATION FEATURES	
INTERSTATE	CONCRETE	COMMERCIAL AIRPORT	GENERAL AIRPORT
US HIGHWAY	BITUMINOUS	AIRSTRIP	AIRSTRIP
MN HIGHWAY	GRAVEL	SEAPLANE	SEAPLANE
COUNTY STATE AID HIGHWAY	DIRT/UNIMPROVED	AIRPORT RUNWAY	AIRPORT RUNWAY
COUNTY ROAD	OTHER		
TOWNSHIP ROAD	UNKNOWN		
UNORGANIZED TERRITORY ROAD			
OTHER ROADS			
Municipal	RAMP OR CONNECTOR		
Private	INTERSTATE EXIT		
Nature Service	GREAT RIVER ROAD		
Military			
RAILROAD AND RAILWAY FEATURES		BOUNDARY FEATURES	
EMPIRE BUILDER STATION (AMTRAK)	TRIBAL LAND	STATE OF MINNESOTA	COUNTY
NORTHSTAR STATION (COMMUTER)	STATE OF MINNESOTA	MUNICIPALITY	MUNICIPALITY
LIGHT RAIL	UNINCORPORATED TERRITORY	UNINCORPORATED TERRITORY	FEDERAL ADJUSTED URBAN AREA (2014)
BLUE LINE	FEDERAL ADJUSTED URBAN AREA (2014)	CIVIL TOWNSHIP	CIVIL TOWNSHIP
GREEN LINE	CIVIL TOWNSHIP	CONGRESSIONAL TOWNSHIP	CONGRESSIONAL TOWNSHIP
	CONGRESSIONAL TOWNSHIP	SECTION	SECTION
	SECTION	MILITARY	MILITARY
	MILITARY	VOYAGEURS NATIONAL PARK	VOYAGEURS NATIONAL PARK
	VOYAGEURS NATIONAL PARK	BOUNDARY WATERS CANOE AREA WILDERNESS	BOUNDARY WATERS CANOE AREA WILDERNESS
	BOUNDARY WATERS CANOE AREA WILDERNESS	STATE PARK	STATE PARK
	STATE PARK	REGIONAL PARK	REGIONAL PARK
	REGIONAL PARK	NATIONAL FOREST	NATIONAL FOREST
	NATIONAL FOREST	NATIONAL AND STATE FOREST	NATIONAL AND STATE FOREST
	NATIONAL AND STATE FOREST	STATE FOREST	STATE FOREST
	STATE FOREST	WILDLIFE REFUGUE AREA	WILDLIFE REFUGUE AREA
	WILDLIFE REFUGUE AREA	WILDLIFE MANAGEMENT AREA	WILDLIFE MANAGEMENT AREA
	WILDLIFE MANAGEMENT AREA		
CITY CENTERS		HYDROLOGIC FEATURES	
STATE CAPITAL	STATE CAPITAL	RIVER OR STREAM (PERMANENT)	RIVER OR STREAM (PERMANENT)
COUNTY SEAT	COUNTY SEAT	LAKE, POND OR RESERVOIR	LAKE, POND OR RESERVOIR
CITY CENTER	CITY CENTER	STREAM (INTERMITTENT)	STREAM (INTERMITTENT)
UNINCORPORATED COMMUNITY	UNINCORPORATED COMMUNITY	DRAINAGE DITCH	DRAINAGE DITCH
		WETLAND	WETLAND
		ISLAND OR LAND	ISLAND OR LAND
		REGIONAL WATERSHED	REGIONAL WATERSHED
PUBLIC SERVICE FEATURES			
MNDOT OFFICE	MNDOT OFFICE		
MNDOT TRUCK STATION	MNDOT TRUCK STATION		
HIGHWAY PATROL DISTRICT OFFICE	HIGHWAY PATROL DISTRICT OFFICE		
STATE TRAVEL INFORMATION CENTER	STATE TRAVEL INFORMATION CENTER		
REST AREA (Full Service)	REST AREA (Full Service)		
REST AREA (Vault Toilet)	REST AREA (Vault Toilet)		
WAYSIDE (Vault or Pit Toilet)	WAYSIDE (Vault or Pit Toilet)		
PARK AND RIDE LOT	PARK AND RIDE LOT		
PORT OF ENTRY	PORT OF ENTRY		
PUBLIC ACCESS POINT	PUBLIC ACCESS POINT		
MN STATE COLLEGE AND UNIVERSITY SYSTEM (MNSCU)	MN STATE COLLEGE AND UNIVERSITY SYSTEM (MNSCU)		
UNIVERSITY OF MN SYSTEM	UNIVERSITY OF MN SYSTEM		
FAIRGROUNDS	FAIRGROUNDS		
CULTURAL FEATURES			
STATE HISTORICAL MARKER	STATE HISTORICAL MARKER		
HISTORIC DISTRICT	HISTORIC DISTRICT		
HISTORIC SITE	HISTORIC SITE		
MONUMENT	MONUMENT		



Population (U.S. Census 2010): 206

To request information from this document in an alternative format, call 651-366-4718 or 1-800-657-3774 (Greater Minnesota); 711 or 1-800-627-3529 (Minnesota Relay). You may also send an e-mail to ADArequest.dot@state.mn.us. (Please request at least one week in advance.)