

EAST LAKE LILIAN

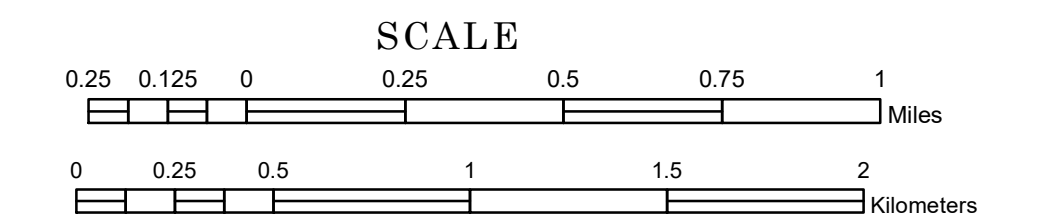
COSMOS

CEDAR MILLS

TOWNSHIP OF BROOKFIELD

PREPARED BY THE
MINNESOTA DEPARTMENT OF TRANSPORTATION
OFFICE OF TRANSPORTATION SYSTEM MANAGEMENT

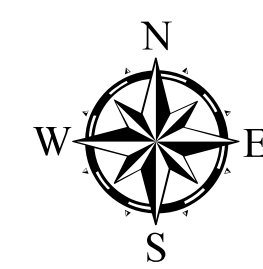
IN COOPERATION WITH
U.S. DEPARTMENT OF TRANSPORTATION
FEDERAL HIGHWAY ADMINISTRATION



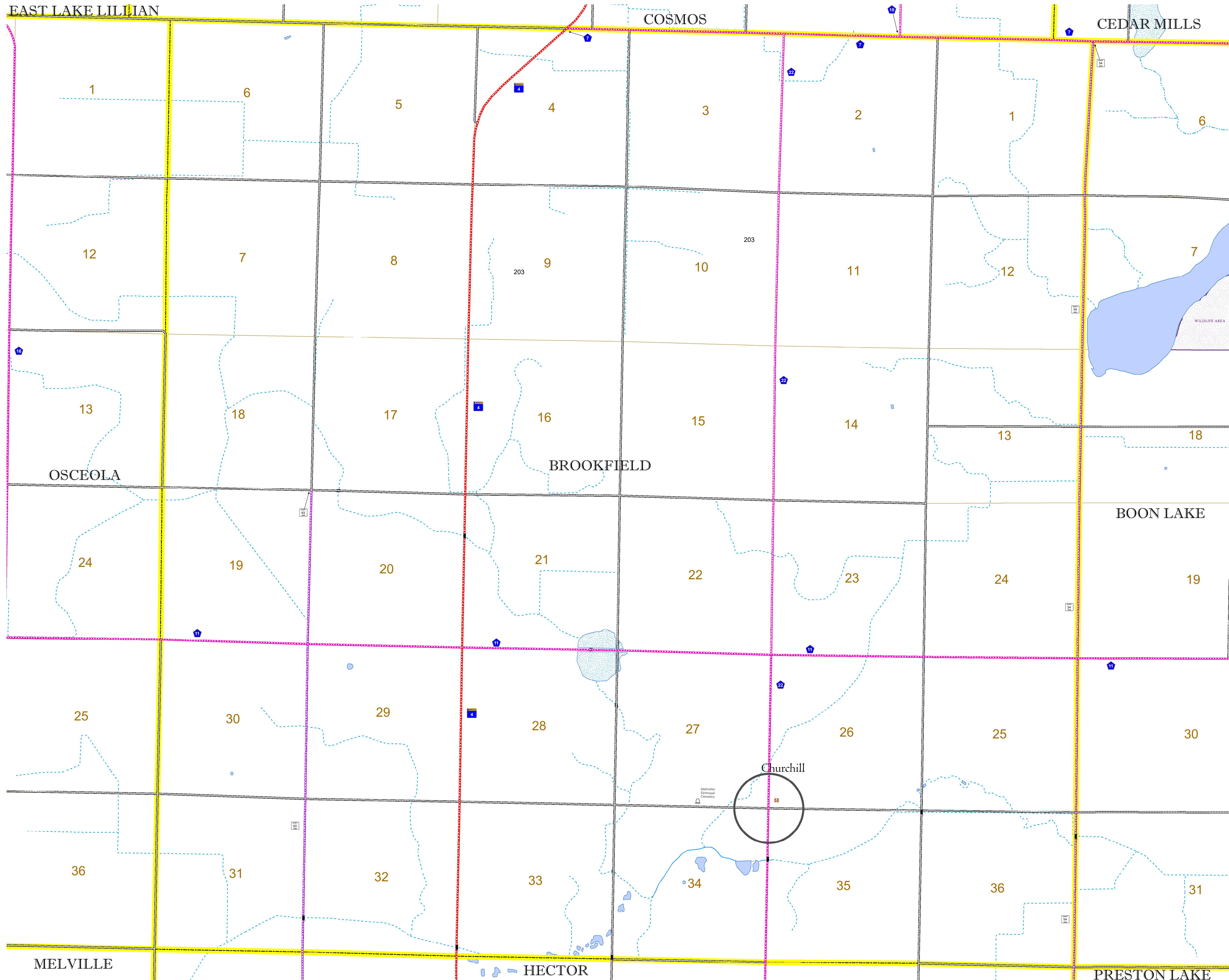
1 in = 1,600 ft

2022

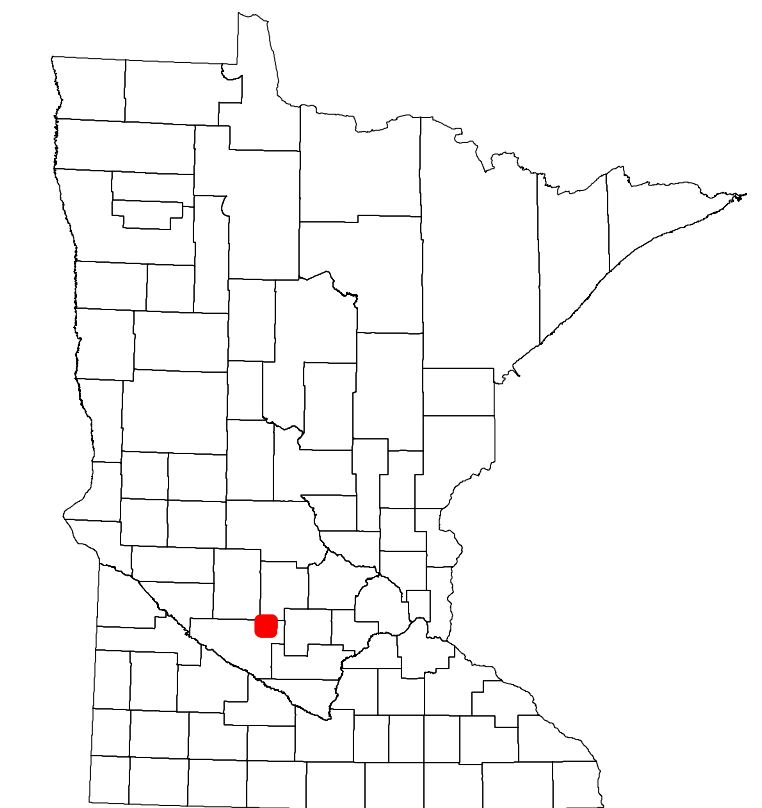
Projection:
Transverse Mercator
NAD 1986
UTM Zone 15



North American Datum
of 1986



| ROAD AND ROADWAY FEATURES | | AVIATION FEATURES | |
|----------------------------|-----------------|--------------------|---------------------------------------|
| INTERSTATE | CONCRETE | COMMERCIAL AIRPORT | TRIBAL LAND |
| US HIGHWAY | BITUMINOUS | GENERAL AIRPORT | STATE OF MINNESOTA |
| MN HIGHWAY | GRAVEL | AIRSTRIP | COUNTY |
| COUNTY STATE AID HIGHWAY | DIRT/UNIMPROVED | SEAPLANE | MUNICIPALITY |
| COUNTY ROAD | OTHER | AIRPORT RUNWAY | UNORGANIZED TERRITORY |
| TOWNSHIP ROAD | UNKNOWN | | FEDERAL ADJUSTED URBAN AREA (2014) |
| UNORGANIZED TERRITORY ROAD | | | CIVIL TOWNSHIP |
| OTHER ROADS | | | CONGRESSIONAL TOWNSHIP |
| Municipal | | | SECTION |
| Private | | | MILITARY |
| National Monument | | | VOYAGEURS NATIONAL PARK |
| National Wildlife Refuge | | | BOUNDARY WATERS CANOE AREA WILDERNESS |
| State Park | | | STATE PARK |
| State Park Preserve | | | REGIONAL PARK |
| | | | NATIONAL FOREST |
| | | | NATIONAL AND STATE FOREST |
| | | | STATE FOREST |
| | | | NATIONAL TRAIL |
| | | | WILDLIFE REFUGUE AREA |
| | | | WILDLIFE MANAGEMENT AREA |
| | | | HYDROLOGIC FEATURES |
| | | | RIVER OR STREAM (PERMANENT) |
| | | | LAKE, POND OR RESERVOIR |
| | | | STREAM (INTERMITTENT) |
| | | | DRAINAGE DITCH |
| | | | WETLAND |
| | | | ISLAND OR LAND |
| | | | REGIONAL WATERSHED |



Population (U.S. Census 2010): 156

To request information from this document in an alternative format, call 651-366-4718 or 1-800-657-3774 (Greater Minnesota); 711 or 1-800-627-3529 (Minnesota Relay). You may also send an e-mail to ADArequest.dot@state.mn.us. (Please request at least one week in advance.)