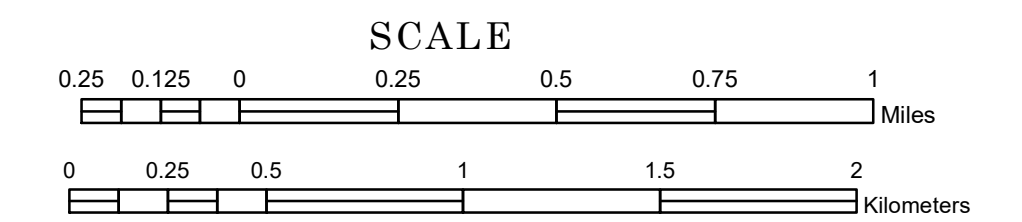


TOWNSHIP OF MELVILLE

PREPARED BY THE
MINNESOTA DEPARTMENT OF TRANSPORTATION
OFFICE OF TRANSPORTATION SYSTEM MANAGEMENT

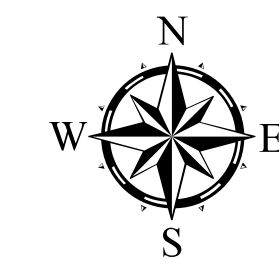
IN COOPERATION WITH
U.S. DEPARTMENT OF TRANSPORTATION
FEDERAL HIGHWAY ADMINISTRATION



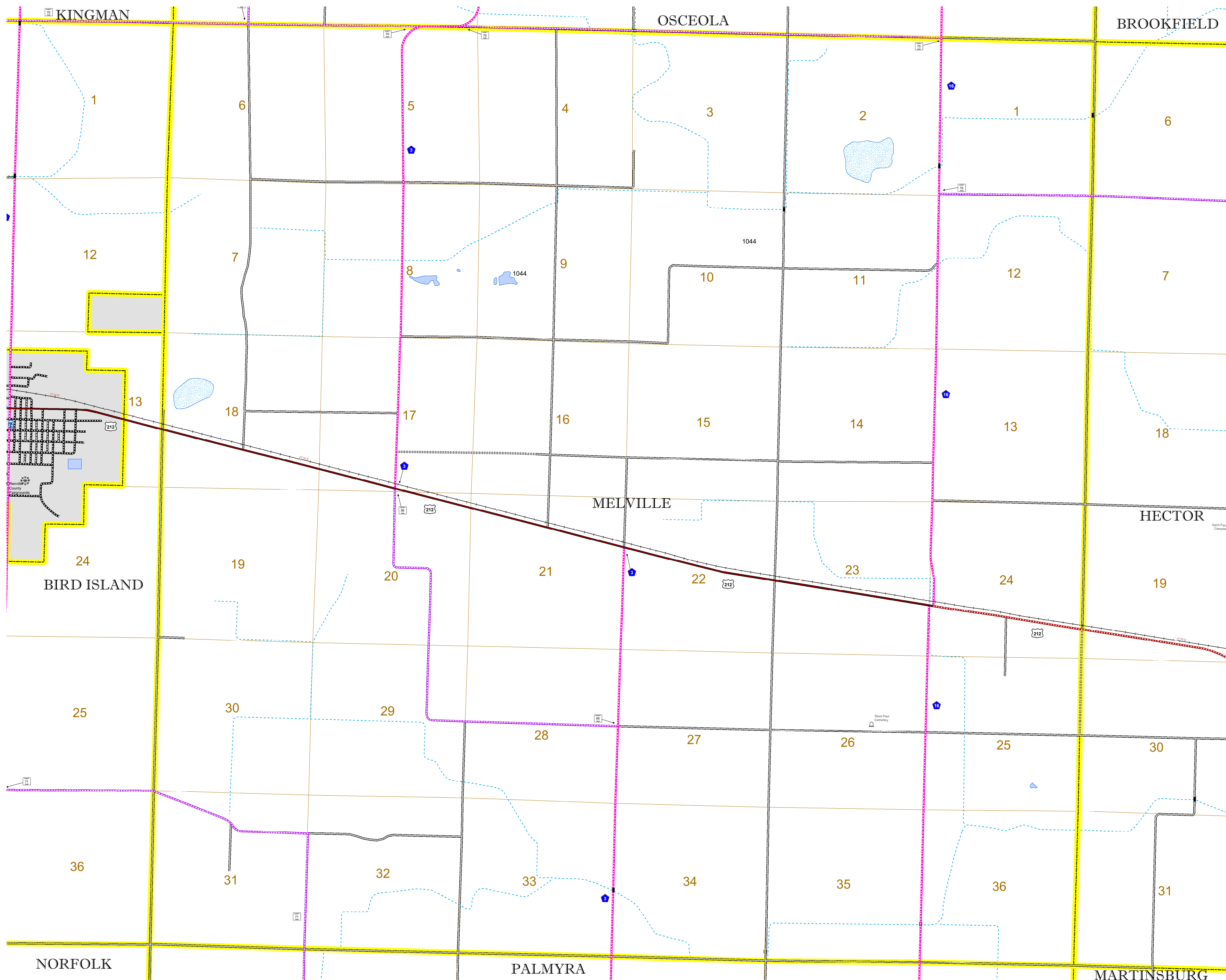
1 in = 1,600 ft

2022

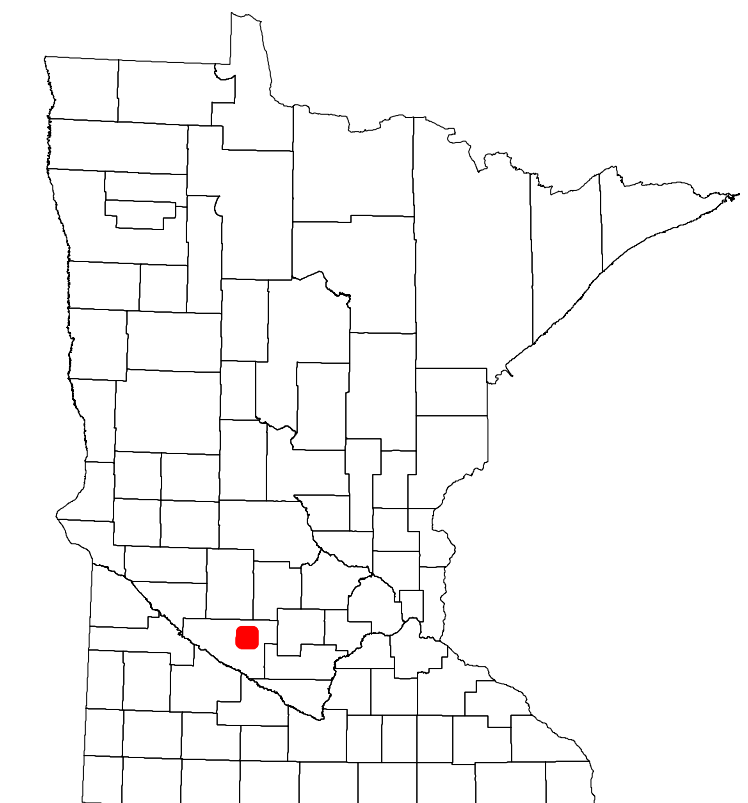
Projection:
Transverse Mercator
NAD 1986
UTM Zone 15



North American Datum
of 1986



ROAD AND ROADWAY FEATURES		AVIATION FEATURES	
INTERSTATE	CONCRETE	COMMERCIAL AIRPORT	GENERAL AIRPORT
US HIGHWAY	BITUMINOUS	AIRSTRIP	SEAPLANE
MN HIGHWAY	GRAVEL	AIRPORT RUNWAY	AIRPORT RUNWAY
COUNTY STATE AID HIGHWAY	DIRT/UNIMPROVED		
COUNTY ROAD	OTHER		
TOWNSHIP ROAD	UNKNOWN		
UNORGANIZED TERRITORY ROAD			
OTHER ROADS			
Municipal	RAMP OR CONNECTOR		
Private	INTERSTATE EXIT		
National Service	GREAT RIVER ROAD		
National Park			
National Wildlife			
State Game			
State Park			
Presence			
RAILROAD AND RAILWAY FEATURES		BOUNDARY FEATURES	
RAILWAY	EMPIRE BUILDER STATION (AMTRAK)	TRIBAL LAND	STATE OF MINNESOTA
	NORTHSTAR STATION (COMPUTER)	COUNTY	MUNICIPALITY
		UNORGANIZED TERRITORY	FEDERAL ADJUSTED URBAN AREA (2014)
		CIVIL TOWNSHIP	CONGRESSIONAL TOWNSHIP
		SECTION	MILITARY
		VOYAGEURS NATIONAL PARK	BOUNDARY WATERS CANOE AREA WILDERNESS
		STATE PARK	NATIONAL FOREST
		REGIONAL PARK	NATIONAL AND STATE FOREST
		STATE FOREST	NATIONAL TRAIL
		WILDLIFE REFUGUE AREA	WILDLIFE MANAGEMENT AREA
		WILDLIFE MANAGEMENT AREA	HYDROLOGIC FEATURES
		RIVER OR STREAM (PERENNIAL)	LAKE, POND OR RESERVOIR
		STREAM (INTERMITTENT)	DRAINAGE DITCH
		WETLAND	ISLAND OR LAND
		REGIONAL WATERSHED	



Population (U.S. Census 2010): 225

To request information from this document in an alternative format, call 651-366-4718 or 1-800-657-3774 (Greater Minnesota); 711 or 1-800-627-3529 (Minnesota Relay). You may also send an e-mail to ADRequest.dot@state.mn.us. (Please request at least one week in advance.)