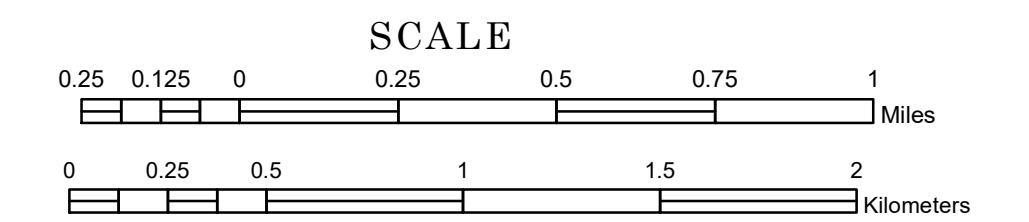


TOWNSHIP OF ENSTROM

PREPARED BY THE
MINNESOTA DEPARTMENT OF TRANSPORTATION
OFFICE OF TRANSPORTATION SYSTEM MANAGEMENT

IN COOPERATION WITH
U.S. DEPARTMENT OF TRANSPORTATION
FEDERAL HIGHWAY ADMINISTRATION



1 in = 1,600 ft

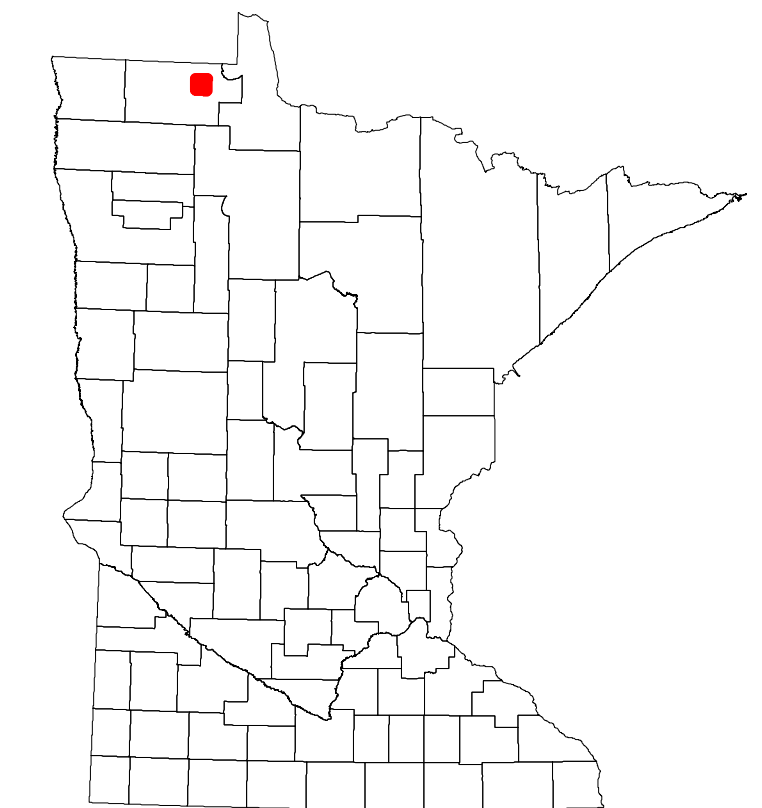
2022

Projection:
Transverse Mercator
NAD 1986
UTM Zone 15

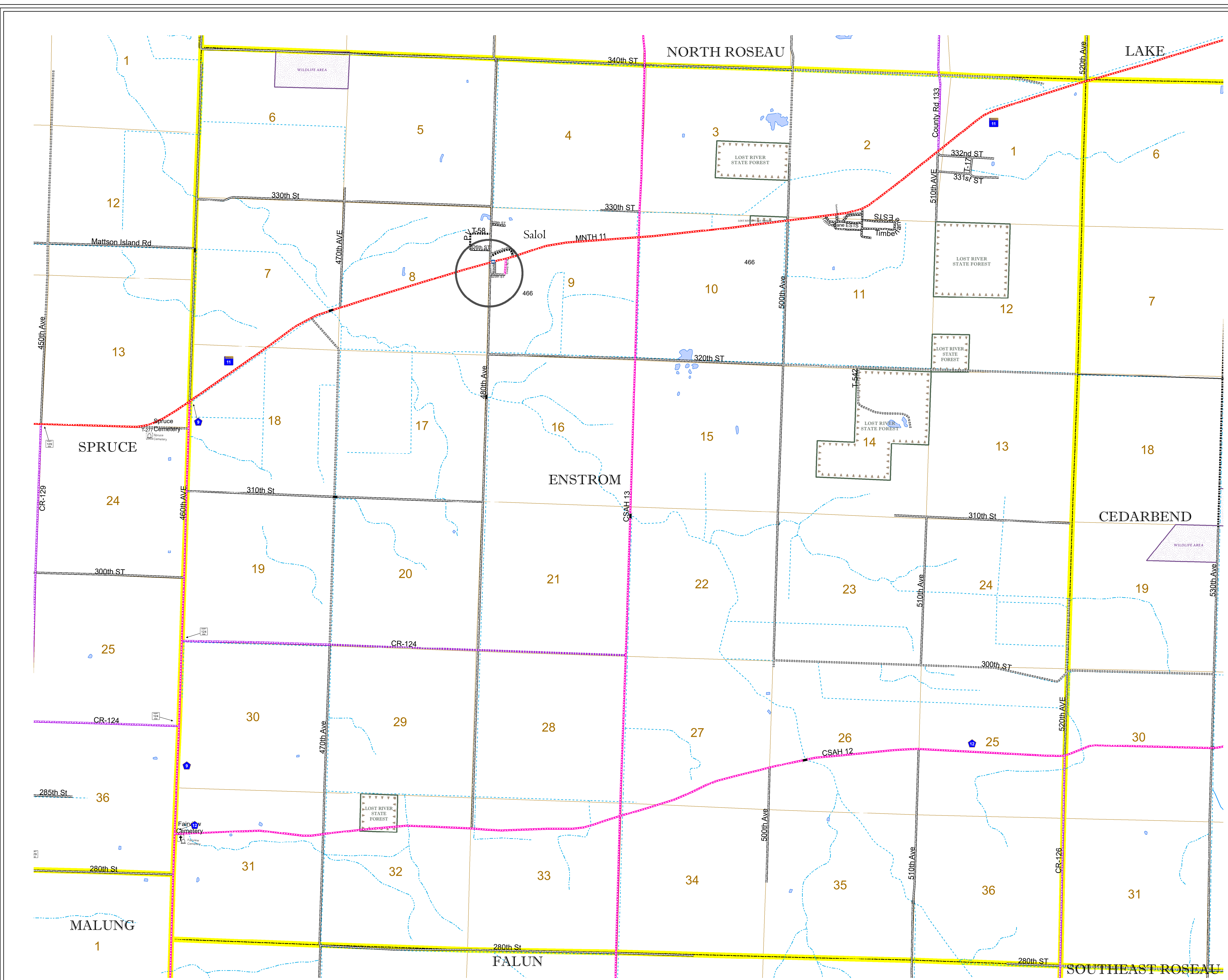


North American Datum
of 1986

| ROAD AND ROADWAY FEATURES | | AVIATION FEATURES | |
|---------------------------------|--------------------|------------------------------------|---------------------------------------|
| INTERSTATE | CONCRETE | COMMERCIAL AIRPORT | GENERAL AIRPORT |
| US HIGHWAY | BITUMINOUS | AIRSTRIP | SEAPLANE |
| MN HIGHWAY | GRAVEL | AIRPORT RUNWAY | |
| COUNTY STATE AID HIGHWAY | DIRT/UNIMPROVED | | |
| COUNTY ROAD | OTHER | | |
| TOWNSHIP ROAD | UNKNOWN | | |
| UNORGANIZED TERRITORY ROAD | | | |
| OTHER ROADS | | | |
| Municipal | RAMP OR CONNECTOR | | |
| Private | INTERSTATE EXIT | | |
| National Monument | GREAT RIVER ROAD | | |
| National Park | | | |
| National Wildlife Refuge | | | |
| State Game | | | |
| State Forest | | | |
| State Park | | | |
| Preserve | | | |
| | | | |
| RAILROAD AND RAILWAY FEATURES | | BOUNDARY FEATURES | |
| EMPIRE BUILDER STATION (AMTRAK) | TRIBAL LAND | STATE OF MINNESOTA | COUNTY |
| NORTHSTAR STATION (COMMUTER) | STATE OF MINNESOTA | MUNICIPALITY | UNORGANIZED TERRITORY |
| | | FEDERAL ADJUSTED URBAN AREA (2014) | CIVIL TOWNSHIP |
| | | | CONGRESSIONAL TOWNSHIP |
| | | | SECTION |
| | | | MILITARY |
| | | | VOYAGEURS NATIONAL PARK |
| | | | BOUNDARY WATERS CANOE AREA WILDERNESS |
| | | | STATE PARK |
| | | | REGIONAL PARK |
| | | | NATIONAL FOREST |
| | | | NATIONAL AND STATE FOREST |
| | | | STATE FOREST |
| | | | NATIONAL TRAIL |
| | | | WILDLIFE REFUGUE AREA |
| | | | WILDLIFE MANAGEMENT AREA |
| | | | HYDROLOGIC FEATURES |
| | | | RIVER OR STREAM (PERENNIAL) |
| | | | LAKE, POND OR RESERVOIR |
| | | | STREAM (INTERMITTENT) |
| | | | DRAINAGE DITCH |
| | | | WETLAND |
| | | | ISLAND OR LAND |
| | | | REGIONAL WATERSHED |



Population (U.S. Census 2010): 455



To request information from this document in an alternative format, call 651-366-4718 or 1-800-657-3774 (Greater Minnesota); 711 or 1-800-627-3529 (Minnesota Relay). You may also send an e-mail to ADARquest.dot@state.mn.us. (Please request at least one week in advance.)