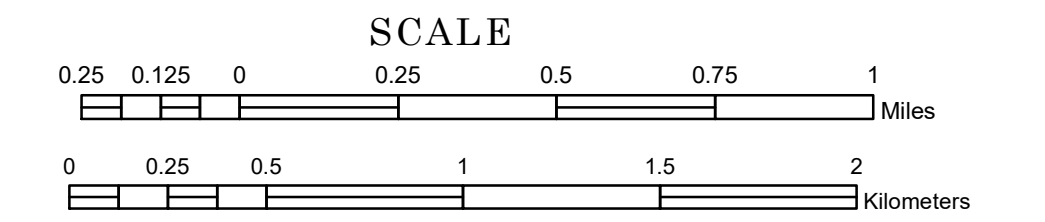


# TOWNSHIP OF MORANVILLE

PREPARED BY THE  
MINNESOTA DEPARTMENT OF TRANSPORTATION  
OFFICE OF TRANSPORTATION SYSTEM MANAGEMENT

IN COOPERATION WITH  
U.S. DEPARTMENT OF TRANSPORTATION  
FEDERAL HIGHWAY ADMINISTRATION



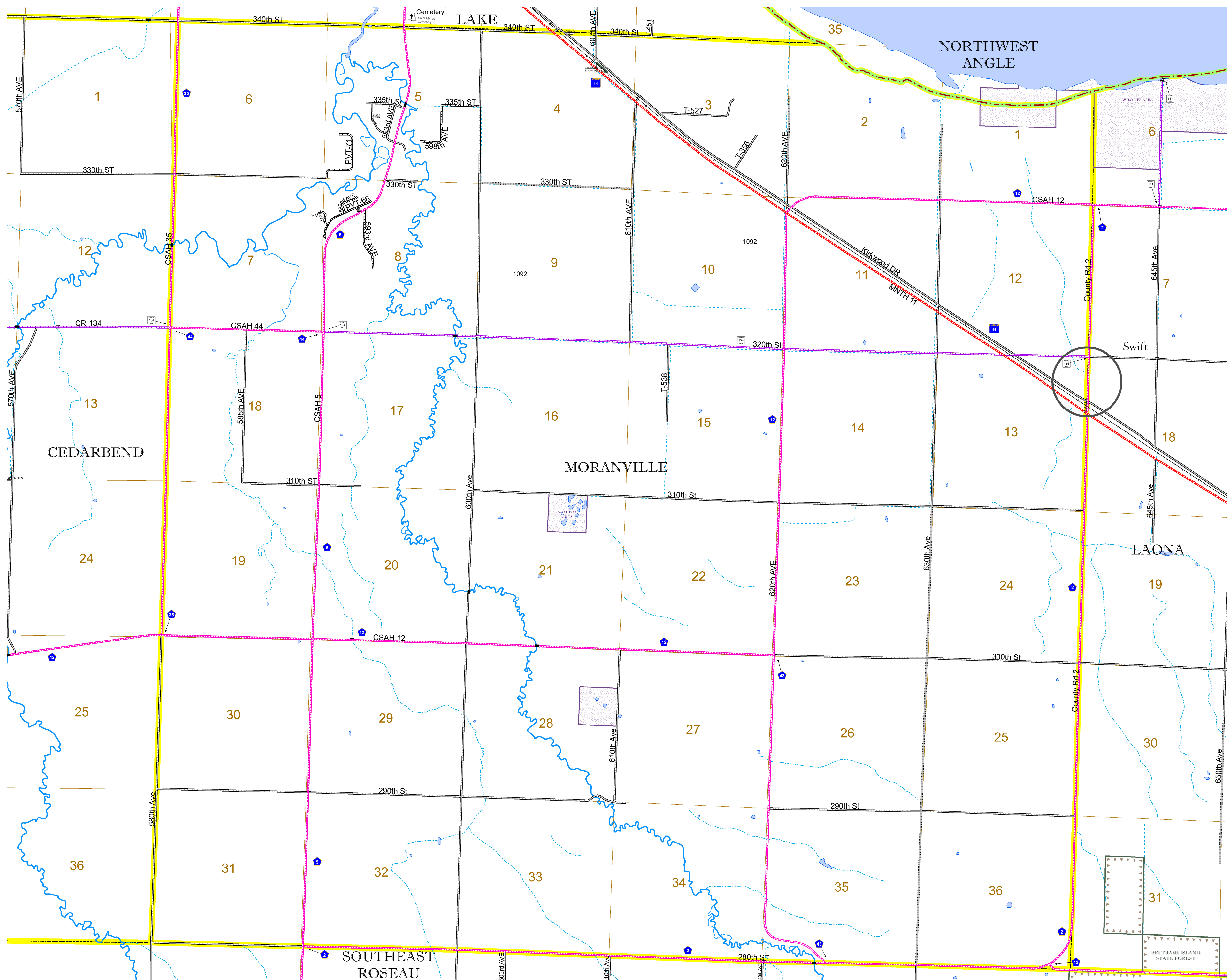
1 in = 1,600 ft

2022

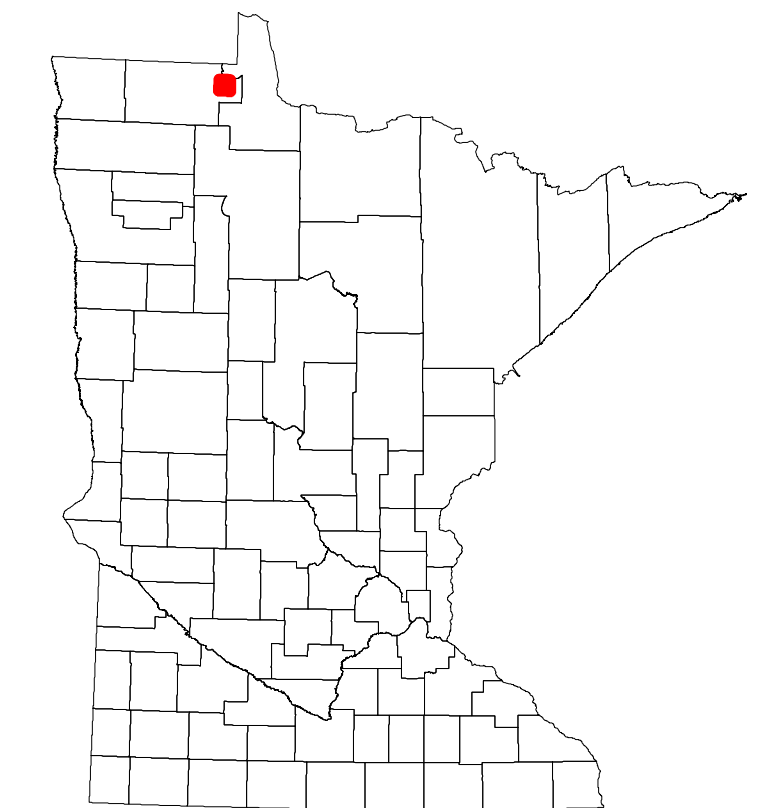
Projection:  
Transverse Mercator  
NAD 1986  
UTM Zone 15



North American Datum  
of 1986



ROAD AND ROADWAY FEATURES		BOUNDARY FEATURES	
INTERSTATE	CONCRETE	TRIBAL LAND	STATE OF MINNESOTA
US HIGHWAY	BITUMINOUS	COUNTY	MUNICIPALITY
MN HIGHWAY	GRAVEL	UNINCORPORATED TOWNSHIP	CIVIL TOWNSHIP
COUNTY STATE AID HIGHWAY	DIRT/UNIMPROVED	SECTION	MILITARY
COUNTY ROAD	OTHER	VOYAGEURS NATIONAL PARK	BOUNDARY WATERS CANOE AREA WILDERNESS
TOWNSHIP ROAD	UNKNOWN	REGIONAL PARK	NATIONAL FOREST
UNORGANIZED TERRITORY ROAD		NATIONAL AND STATE FOREST	STATE FOREST
OTHER ROADS		WILDLIFE REFUGUE AREA	WILDLIFE MANAGEMENT AREA
Municipal		WILDLIFE REFUGUE AREA	HYDROLOGIC FEATURES
Private		RIVER OR STREAM (PERMANENT)	LAKE, POND OR RESERVOIR
National Monument		STREAM (INTERMITTENT)	DRAINAGE DITCH
National Wildlife Refuge		WETLAND	ISLAND OR LAND
State Game Preserve		MONUMENT	REGIONAL WATERSHED
State Park			
Preserve			



Population (U.S. Census 2010): 887

To request information from this document in an alternative format, call 651-366-4718 or 1-800-657-3774 (Greater Minnesota); 711 or 1-800-627-3529 (Minnesota Relay). You may also send an e-mail to ADARrequest.dot@state.mn.us. (Please request at least one week in advance.)