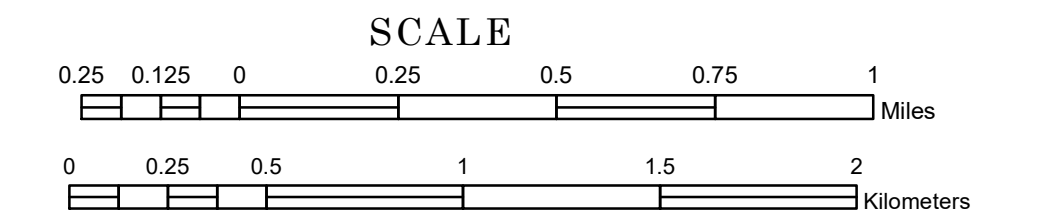


TOWNSHIP OF BLUE HILL

PREPARED BY THE
MINNESOTA DEPARTMENT OF TRANSPORTATION
OFFICE OF TRANSPORTATION SYSTEM MANAGEMENT

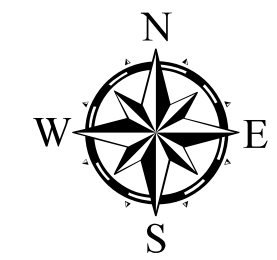
IN COOPERATION WITH
U.S. DEPARTMENT OF TRANSPORTATION
FEDERAL HIGHWAY ADMINISTRATION



1 in = 1,600 ft

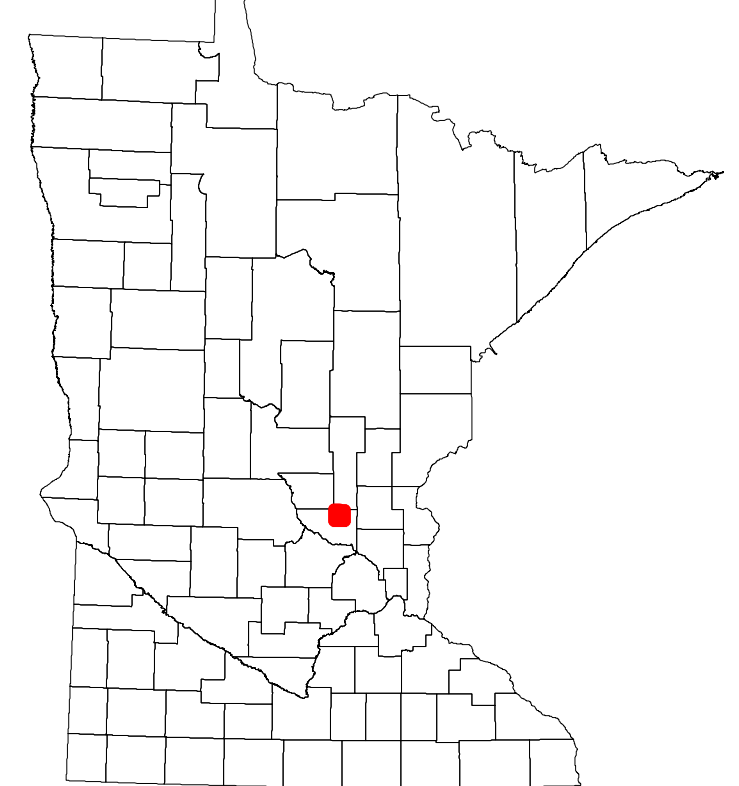
2022

Projection:
Transverse Mercator
NAD 1986
UTM Zone 15

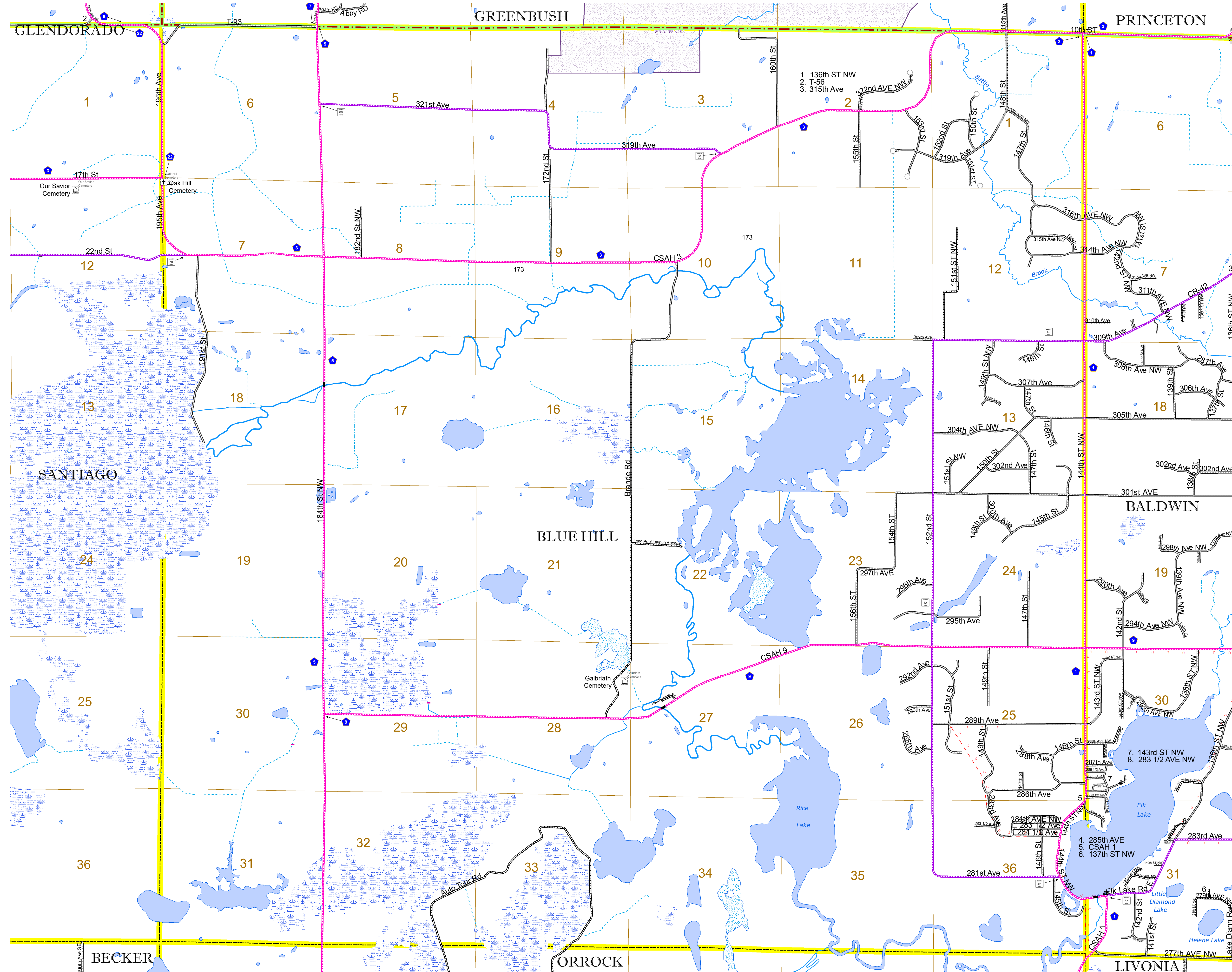


North American Datum
of 1986

ROAD AND ROADWAY FEATURES		BOUNDARY FEATURES	
INTERSTATE	[Symbol]	TRIBAL LAND	[Symbol]
US HIGHWAY	[Symbol]	STATE OF MINNESOTA	[Symbol]
MN HIGHWAY	[Symbol]	COUNTY	[Symbol]
COUNTY STATE AID HIGHWAY	[Symbol]	MUNICIPALITY	[Symbol]
COUNTY ROAD	[Symbol]	UNORGANIZED TERRITORY	[Symbol]
TOWNSHIP ROAD	[Symbol]	FEDERAL ADJUSTED URBAN AREA (2014)	[Symbol]
UNORGANIZED TERRITORY ROAD	[Symbol]	CIVIL TOWNSHIP	[Symbol]
OTHER ROADS	[Symbol]	CONGRESSIONAL TOWNSHIP	[Symbol]
Municipal	[Symbol]	SECTION	[Symbol]
Private	[Symbol]	MILITARY	[Symbol]
National Monument	[Symbol]	VOYAGEURS NATIONAL PARK	[Symbol]
State Forest	[Symbol]	BOUNDARY NATURAL PARK	[Symbol]
Nature Service	[Symbol]	BOUNDARY WATERS CANOE AREA WILDERNESS	[Symbol]
Muslim	[Symbol]	STATE PARK	[Symbol]
National Park	[Symbol]	REGIONAL PARK	[Symbol]
National Wildlife	[Symbol]	NATIONAL FOREST	[Symbol]
State Park	[Symbol]	NATIONAL AND STATE FOREST	[Symbol]
Preserve	[Symbol]	STATE FOREST	[Symbol]
RAILROAD AND RAILWAY FEATURES	[Symbol]	WILDLIFE REFUGE AREA	[Symbol]
COMMERCIAL AIRPORT	[Symbol]	WILDLIFE MANAGEMENT AREA	[Symbol]
GENERAL AIRPORT	[Symbol]	HYDROLOGIC FEATURES	[Symbol]
AIRSTRIP	[Symbol]	RIVER OR STREAM (PERMANENT)	[Symbol]
SEAPLANE	[Symbol]	LAKE, POND OR RESERVOIR	[Symbol]
AIRPORT RUNWAY	[Symbol]	STREAM (INTERMITTENT)	[Symbol]
INFRASTRUCTURE FEATURES	[Symbol]	DRAINAGE DITCH	[Symbol]
LONG BRIDGE (200' or Greater Span)	[Symbol]	WETLAND	[Symbol]
MAJOR BRIDGE (20' to 200' Span)	[Symbol]	ISLAND OR LAND	[Symbol]
MINOR BRIDGE (5' to 20' Span)	[Symbol]	REGIONAL WATERSHED	[Symbol]
DAM	[Symbol]		
LOCK AND DAM	[Symbol]		
CITY CENTERS	[Symbol]		
STATE CAPITAL	[Symbol]		
COUNTY SEAT	[Symbol]		
CITY CENTER	[Symbol]		
UNINCORPORATED COMMUNITY	[Symbol]		
PUBLIC SERVICE FEATURES	[Symbol]		
MN DOT OFFICE	[Symbol]		
MN DOT TRUCK STATION	[Symbol]		
HIGHWAY PATROL DISTRICT OFFICE	[Symbol]		
STATE TRAVEL INFORMATION CENTER	[Symbol]		
REST AREA (Full Service)	[Symbol]		
REST AREA (Vault Toilet)	[Symbol]		
WAYSIDE (Vault or Pit Toilet)	[Symbol]		
PARK AND RIDE LOT	[Symbol]		
PORT OF ENTRY	[Symbol]		
PUBLIC ACCESS POINT	[Symbol]		
MN STATE COLLEGE AND UNIVERSITY SYSTEM (MNSCU)	[Symbol]		
UNIVERSITY OF MN SYSTEM	[Symbol]		
FAIRGROUNDS	[Symbol]		
CULTURAL FEATURES	[Symbol]		
STATE HISTORICAL MARKER	[Symbol]		
HISTORIC DISTRICT	[Symbol]		
HISTORIC SITE	[Symbol]		
MONUMENT	[Symbol]		



Population (U.S. Census 2010): 2176



To request information from this document in an alternative format, call 651-366-4718 or 1-800-657-3774 (Greater Minnesota); 711 or 1-800-627-3529 (Minnesota Relay). You may also send an e-mail to ADARquest.dot@state.mn.us. (Please request at least one week in advance.)