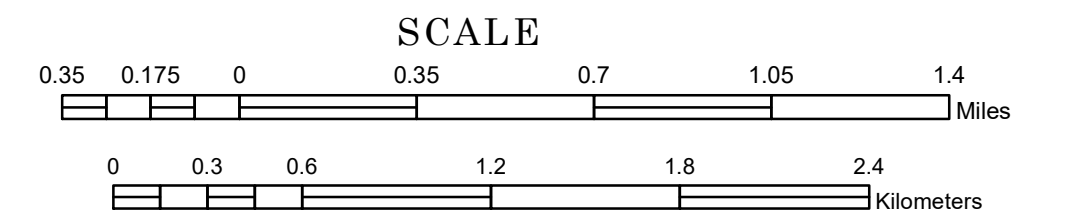


TOWNSHIP OF MONSON

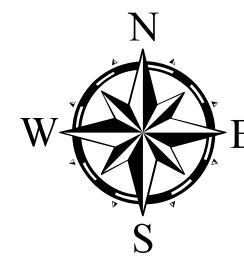
PREPARED BY THE
MINNESOTA DEPARTMENT OF TRANSPORTATION
OFFICE OF TRANSPORTATION SYSTEM MANAGEMENT

IN COOPERATION WITH
U.S. DEPARTMENT OF TRANSPORTATION
FEDERAL HIGHWAY ADMINISTRATION

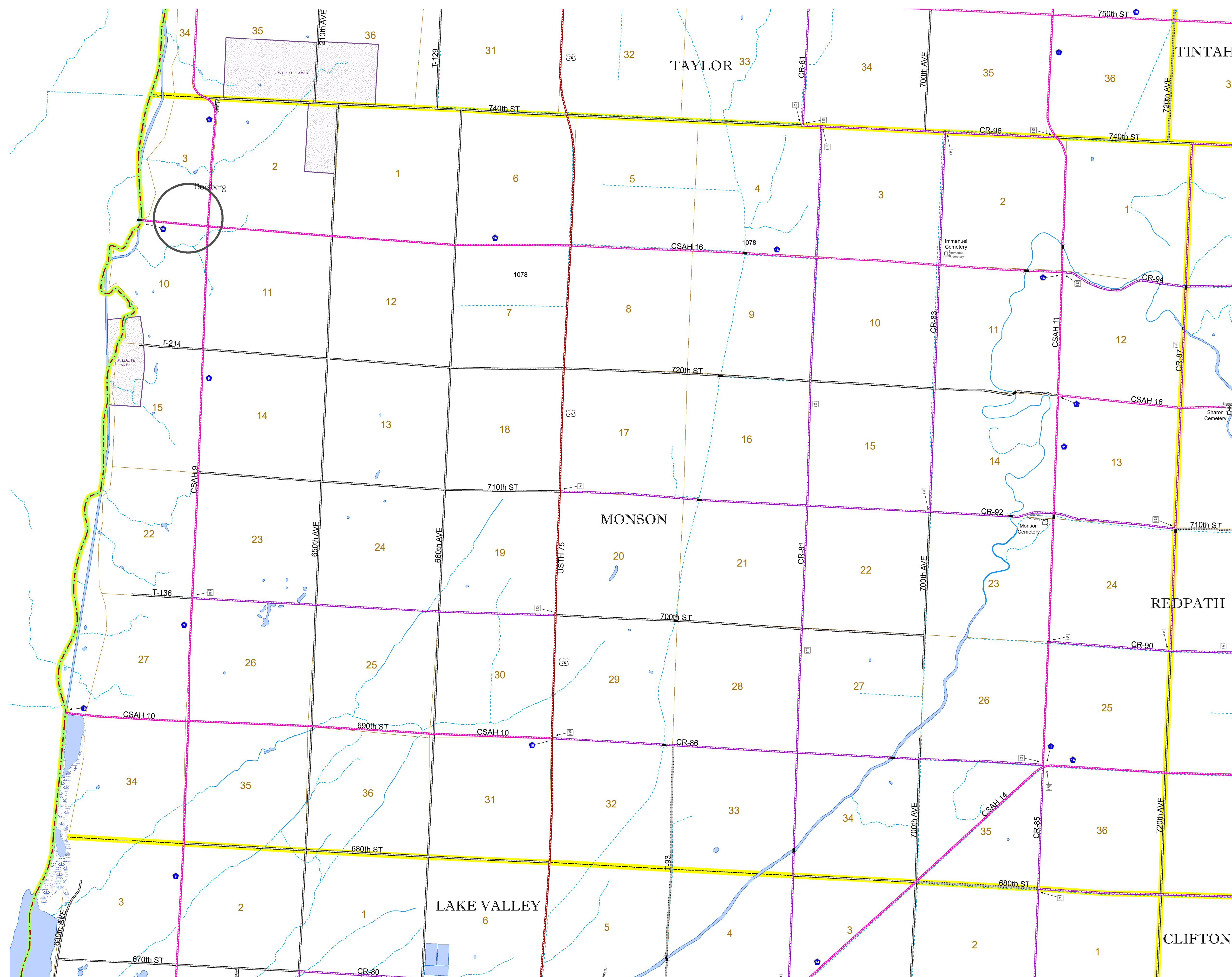


2022

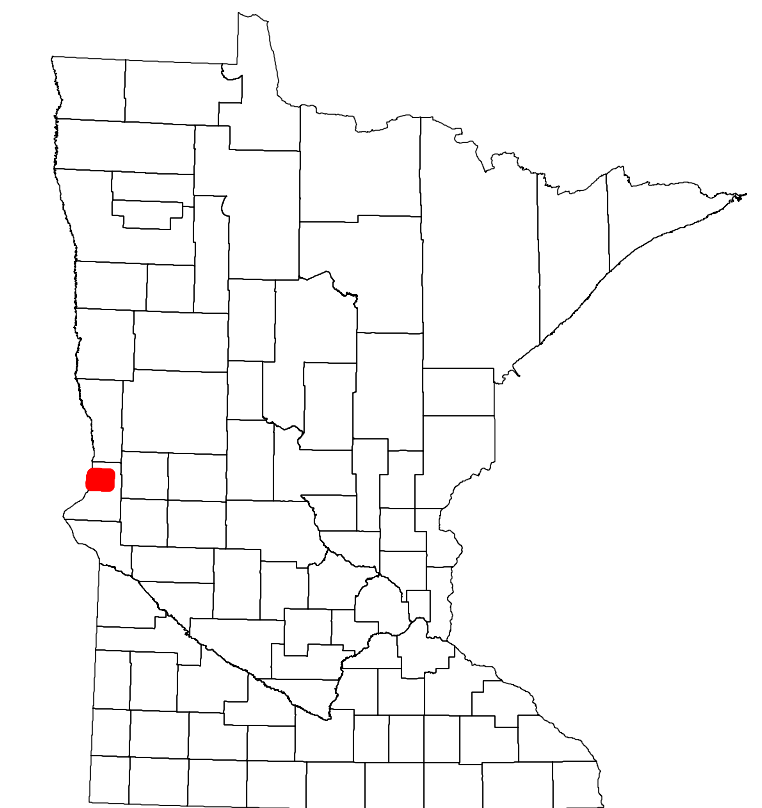
Projection:
Transverse Mercator
NAD 1986
UTM Zone 15



North American Datum
of 1986



| ROAD AND ROADWAY FEATURES | | AVIATION FEATURES | |
|----------------------------|-------------------|--------------------|---------------------------------------|
| INTERSTATE | CONCRETE | COMMERCIAL AIRPORT | TRIAL LAND |
| US HIGHWAY | BITUMINOUS | GENERAL AIRPORT | STATE OF MINNESOTA |
| MN HIGHWAY | GRAVEL | AIRSTRIP | COUNTY |
| COUNTY STATE AID HIGHWAY | DIRT/UNIMPROVED | SEAPLANE | MUNICIPALITY |
| COUNTY ROAD | OTHER | AIRPORT RUNWAY | UNORGANIZED TERRITORY |
| TOWNSHIP ROAD | UNKNOWN | | FEDERAL ADJUSTED URBAN AREA (2014) |
| UNORGANIZED TERRITORY ROAD | | | CIVIL TOWNSHIP |
| OTHER ROADS | | | CONGRESSIONAL TOWNSHIP |
| Municipal | RAMP OR CONNECTOR | | SECTION |
| Private | INTERSTATE EXIT | | MILITARY |
| National Monument | | | VOYAGEURS NATIONAL PARK |
| National Wildlife Refuge | | | BOUNDARY WATERS CANOE AREA WILDERNESS |
| State Forest | | | STATE PARK |
| State Game | | | REGIONAL PARK |
| State Park | | | NATIONAL FOREST |
| Preserve | | | NATIONAL AND STATE FOREST |
| | | | STATE FOREST |
| | | | WILDLIFE REFUGUE AREA |
| | | | WILDLIFE MANAGEMENT AREA |
| | | | HYDROLOGIC FEATURES |
| | | | RIVER OR STREAM (PERENNIAL) |
| | | | LAKE, POND OR RESERVOIR |
| | | | STREAM (INTERMITTENT) |
| | | | DRAINAGE DITCH |
| | | | WETLAND |
| | | | ISLAND OR LAND |
| | | | REGIONAL WATERSHED |



Population (U.S. Census 2010): 133

To request information from this document in an alternative format, call 651-366-4718 or 1-800-657-3774 (Greater Minnesota); 711 or 1-800-627-3529 (Minnesota Relay). You may also send an e-mail to ADarequest.dot@state.mn.us. (Please request at least one week in advance.)