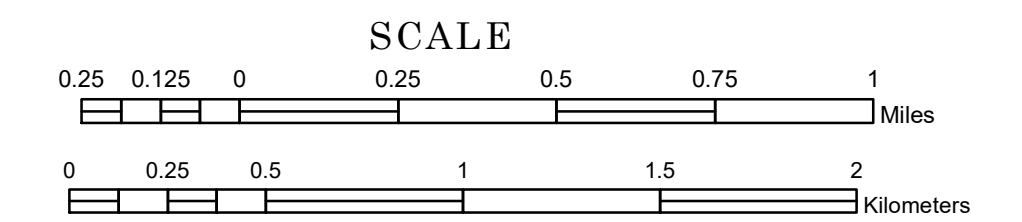


TOWNSHIP OF NEW RICHLAND

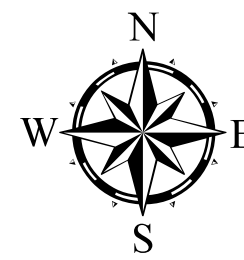
PREPARED BY THE
MINNESOTA DEPARTMENT OF TRANSPORTATION
OFFICE OF TRANSPORTATION SYSTEM MANAGEMENT

IN COOPERATION WITH
U.S. DEPARTMENT OF TRANSPORTATION
FEDERAL HIGHWAY ADMINISTRATION



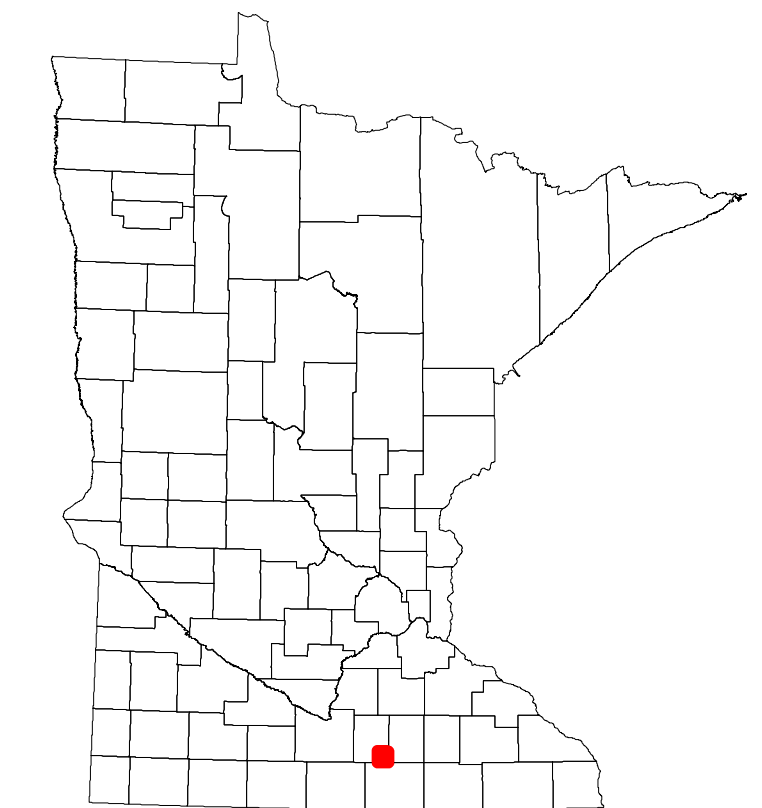
2022

Projection:
Transverse Mercator
NAD 1986
UTM Zone 15

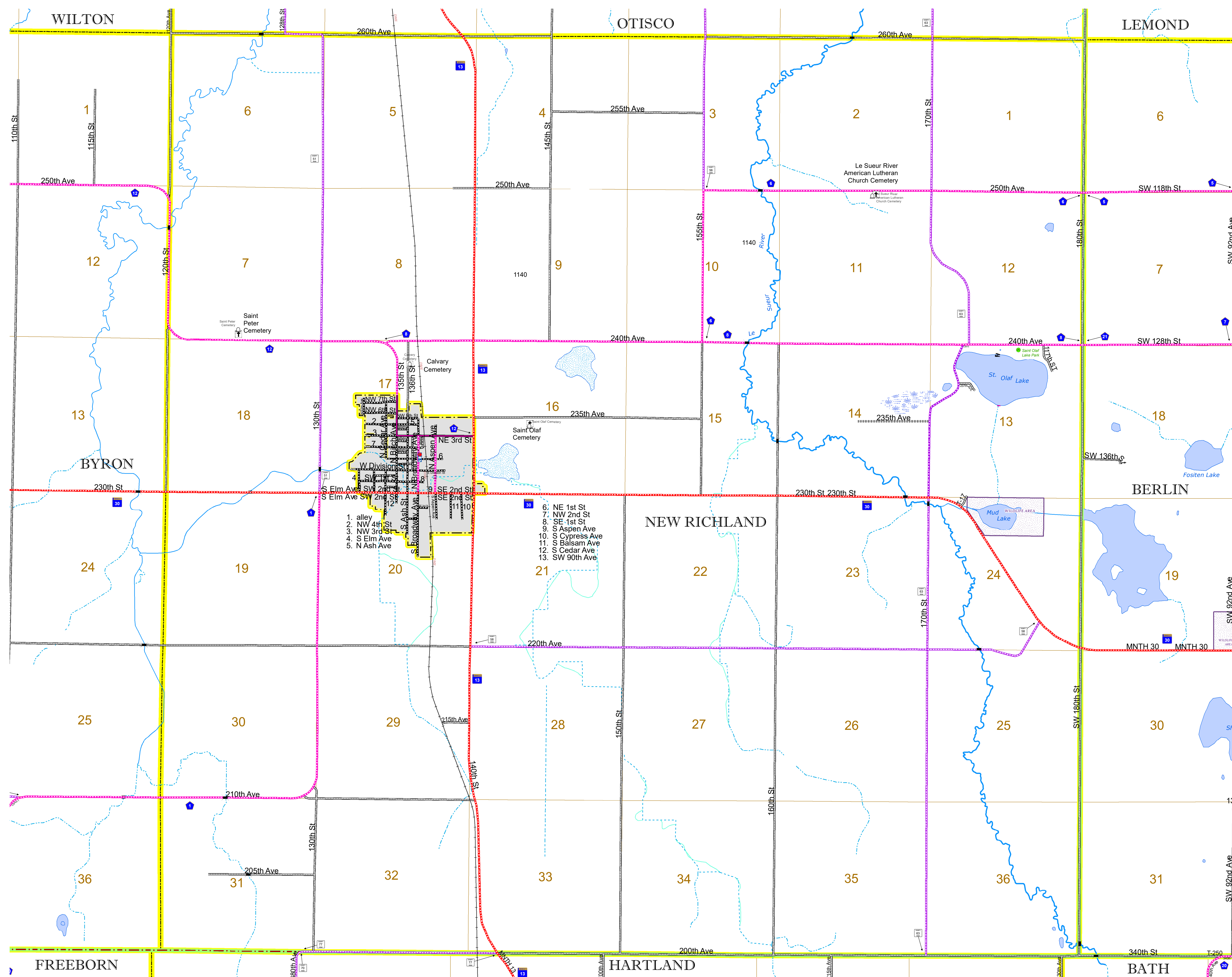


North American Datum
of 1986

ROAD AND ROADWAY FEATURES	RAILROAD AND RAILWAY FEATURES	AVIATION FEATURES	BOUNDARY FEATURES
INTERSTATE	EMPIRE BUILDER STATION (AMTRAK)	COMMERCIAL AIRPORT	TRIBAL LAND
US HIGHWAY	NORTHSTAR STATION (COMPUTER)	GENERAL AIRPORT	STATE OF MINNESOTA
MN HIGHWAY	LIGHT RAIL	AIRSTRIP	COUNTY
COUNTY STATE AID HIGHWAY	BLUE LINE	SEAPLANE	MUNICIPALITY
COUNTY ROAD	GREEN LINE	AIRPORT RUNWAY	UNINCORPORATED
TOWNSHIP ROAD	LONG BRIDGE (200' OR GREATER SWAY)	AIRPORT TAXIWAY	FEDERAL ADJUSTED URBAN AREA (2014)
UNORGANIZED TERRITORY ROAD	MAJOR BRIDGE (20' TO 200' SWAY)	RAILROAD	CIVIL TOWNSHIP
OTHER ROADS	MINOR BRIDGE (5' TO 20' SWAY)	RAILROAD BRANCH	CONGRESSIONAL TOWNSHIP
MUNICIPAL	LOCK AND DAM	RAILROAD PASSENGER	SECTION
PRIVATE	STATE CAPITAL	RAILROAD FREIGHT	MILITARY
NATIONAL MONUMENT	CITY CENTER	RAILROAD INDUSTRIAL	VOYAGEURS NATIONAL PARK
STATE FOREST	COUNTY SEAT	RAILROAD PASSENGER	BOUNDARY WATERS CANOE AREA WILDERNESS
STATE GAME	CITY CENTER	RAILROAD PASSENGER	STATE PARK
NATIONAL WILDLIFE REFUGE	UNINCORPORATED COMMUNITY	RAILROAD PASSENGER	REGIONAL PARK
STATE PARK		RAILROAD PASSENGER	NATIONAL FOREST
STATE FOREST		RAILROAD PASSENGER	NATIONAL AND STATE FOREST
WILDLIFE REFUGE AREA		RAILROAD PASSENGER	STATE FOREST
WILDLIFE MANAGEMENT AREA		RAILROAD PASSENGER	NATIONAL TRAIL
HYDROLOGIC FEATURES		RAILROAD PASSENGER	WILDLIFE REFUGE AREA
RIVER OR STREAM (PERMANENT)		RAILROAD PASSENGER	WILDLIFE MANAGEMENT AREA
LAKE, POND OR RESERVOIR		RAILROAD PASSENGER	HYDROLOGIC FEATURES
STREAM (INTERMITTENT)		RAILROAD PASSENGER	LAKE, POND OR RESERVOIR
DRAINAGE DITCH		RAILROAD PASSENGER	STREAM (INTERMITTENT)
WETLAND		RAILROAD PASSENGER	DRAINAGE DITCH
ISLAND OR LAND		RAILROAD PASSENGER	WETLAND
REGIONAL WATERSHED		RAILROAD PASSENGER	ISLAND OR LAND
		RAILROAD PASSENGER	REGIONAL WATERSHED



Population (U.S. Census 2010): 443



1. alley
2. NW 4th St
3. NW 3rd St
4. S Elm Ave
5. N Ash Ave
6. NE 1st St
7. NW 2nd St
8. SE 1st St
9. S Aspen Ave
10. S Cypress Ave
11. S Balsam Ave
12. S Cedar Ave
13. SW 90th Ave

To request information from this document in an alternative format, call 651-366-4718 or 1-800-657-3774 (Greater Minnesota); 711 or 1-800-627-3529 (Minnesota Relay). You may also send an e-mail to ADARquest.dot@state.mn.us. (Please request at least one week in advance.)